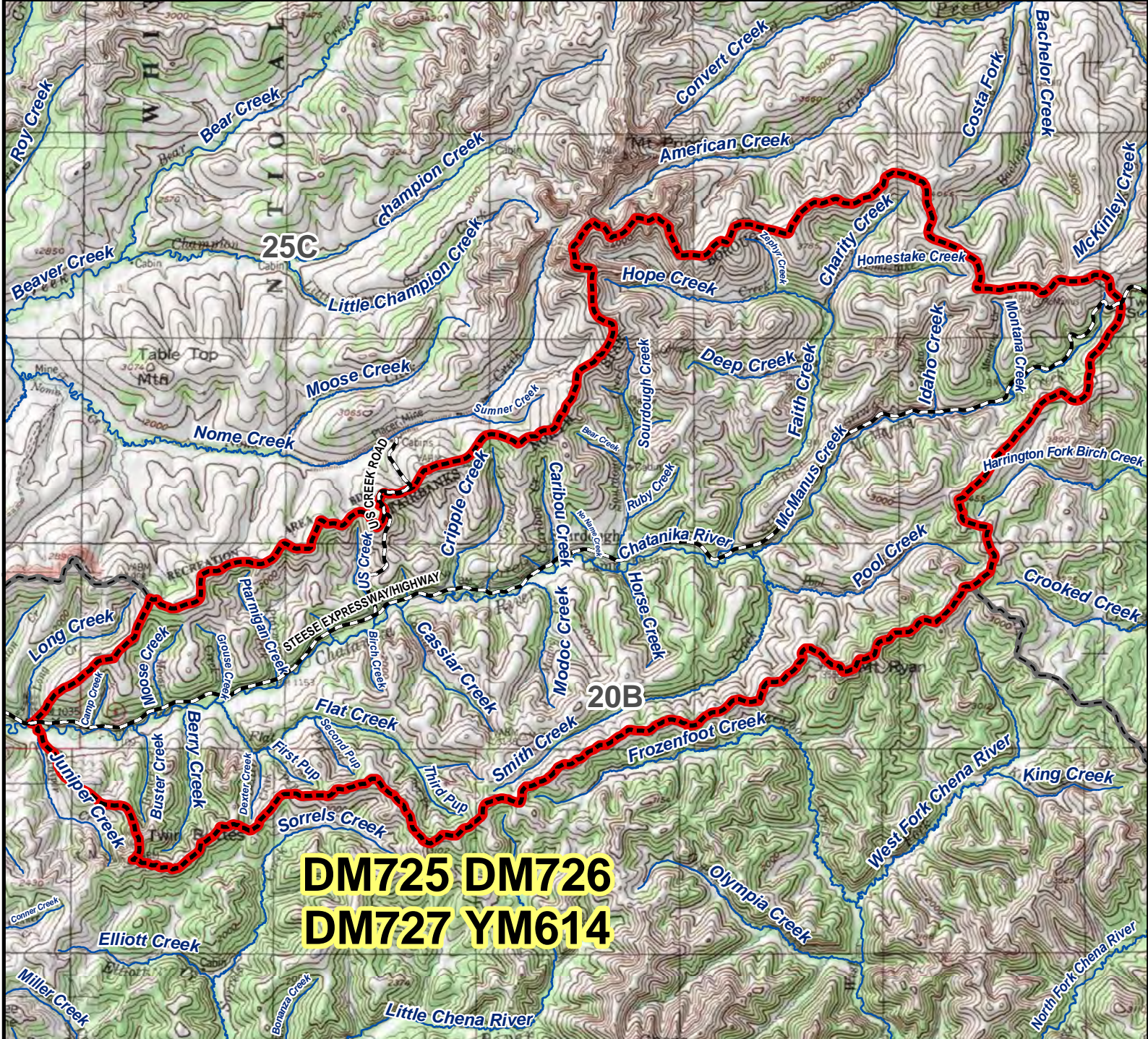


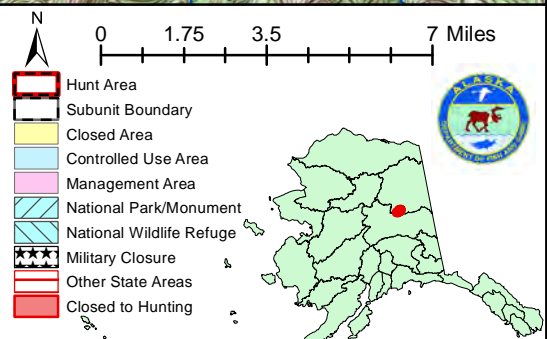
# DM725 DM726 DM727 YM614 Moose Drawing and Youth Permit Hunt

This map is intended for hunt planning use, not for determining legal property or regulatory boundaries. Content is compiled from various sources and is subject to change without notice. See current hunting regulations for written descriptions of boundaries. Hunters are responsible for knowing the land ownership and regulations of the areas they intend to hunt.



**DM725 DM726  
DM727 YM614**

**AREA DESCRIPTION:** Unit 20B; that portion of 20B drained by the Chatanika River, upstream of Long Creek.



Please refer to the Alaska Hunting Regulations booklet for bag type, seasons, and additional regulations concerning this hunt.