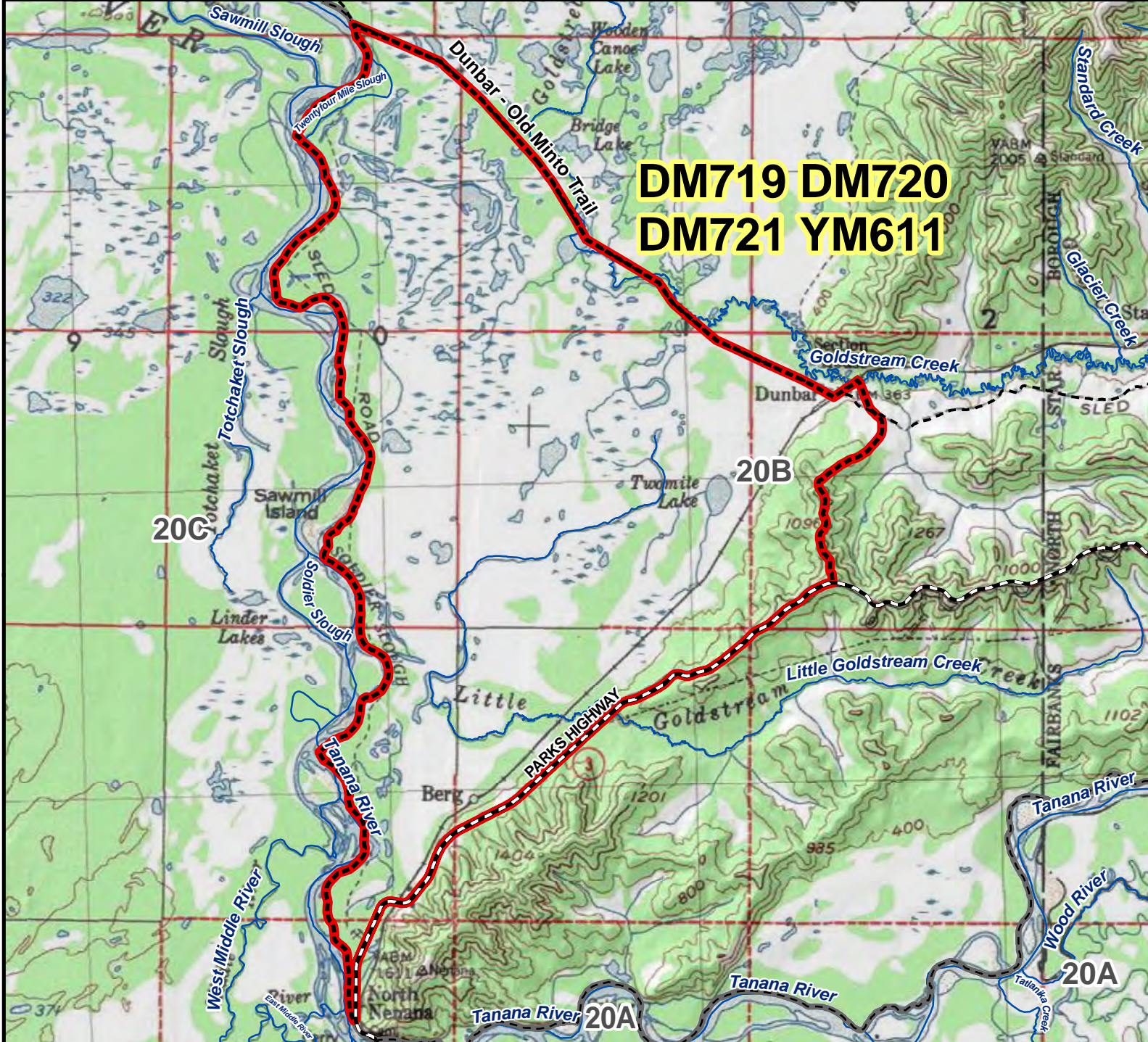


DM719 DM720 DM721 YM611 Moose Drawing and Youth Permit Hunt

This map is intended for hunt planning use, not for determining legal property or regulatory boundaries. Content is compiled from various sources and is subject to change without notice. See current hunting regulations for written descriptions of boundaries. Hunters are responsible for knowing the land ownership and regulations of the areas they intend to hunt.



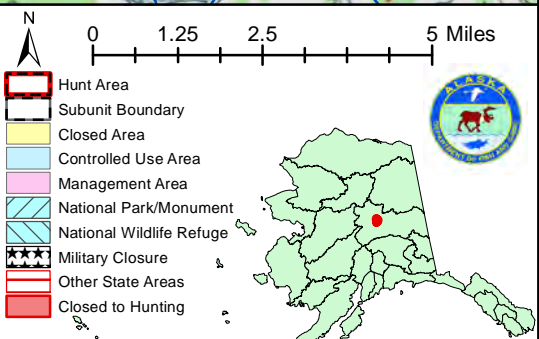
**DM719 DM720
DM721 YM611**

20C

20B

20A

AREA DESCRIPTION: Unit 20B; that portion of 20B bounded on the west by the Tanana River, on the north by the Dunbar-Old Minto Trail, and on the south by the Parks Highway, excluding the drainage of Goldstream Creek upstream from Dunbar.



Please refer to the Alaska Hunting Regulations booklet for bag type, seasons, and additional regulations concerning this hunt.