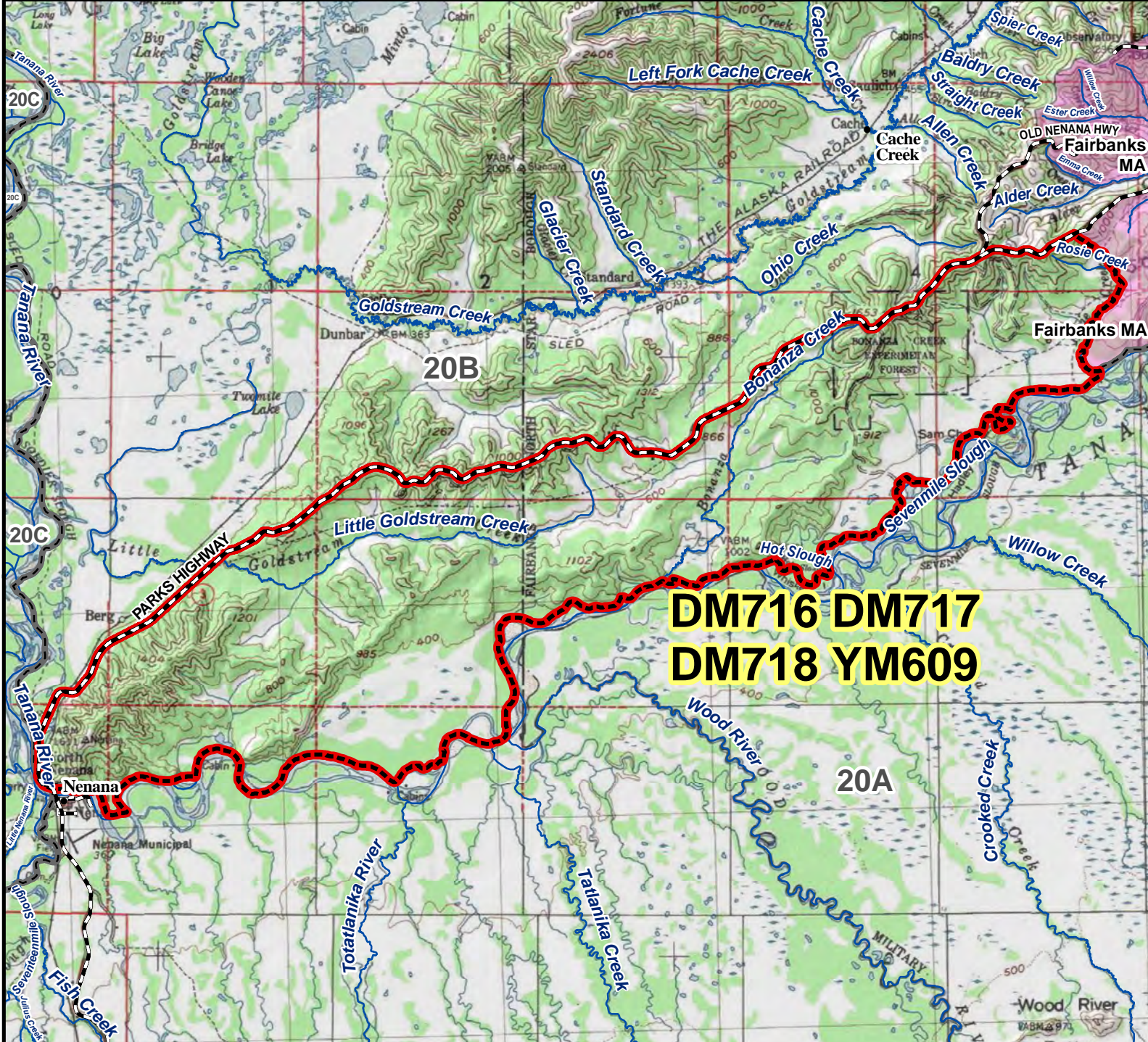


DM716 DM717 DM718 YM609

Moose

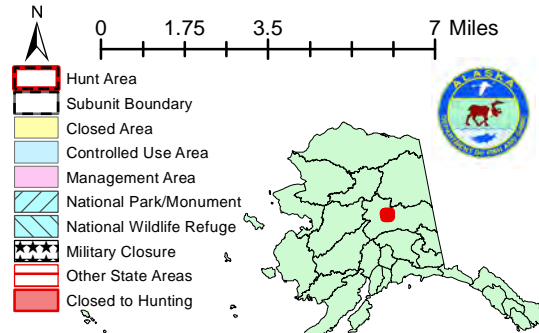
Drawing and Youth Permit Hunt

This map is intended for hunt planning use, not for determining legal property or regulatory boundaries. Content is compiled from various sources and is subject to change without notice. See current hunting regulations for written descriptions of boundaries. Hunters are responsible for knowing the land ownership and regulations of the areas they intend to hunt.



DM716 DM717
DM718 YM609

AREA DESCRIPTION: Unit 20B, that portion bounded on the north by the Parks Highway, bounded on the south by the Tanana River, and bounded on the east by the Fairbanks Management Area (Rosie Creek).



Please refer to the Alaska Hunting Regulations booklet for bag type, seasons, and additional regulations concerning this hunt.