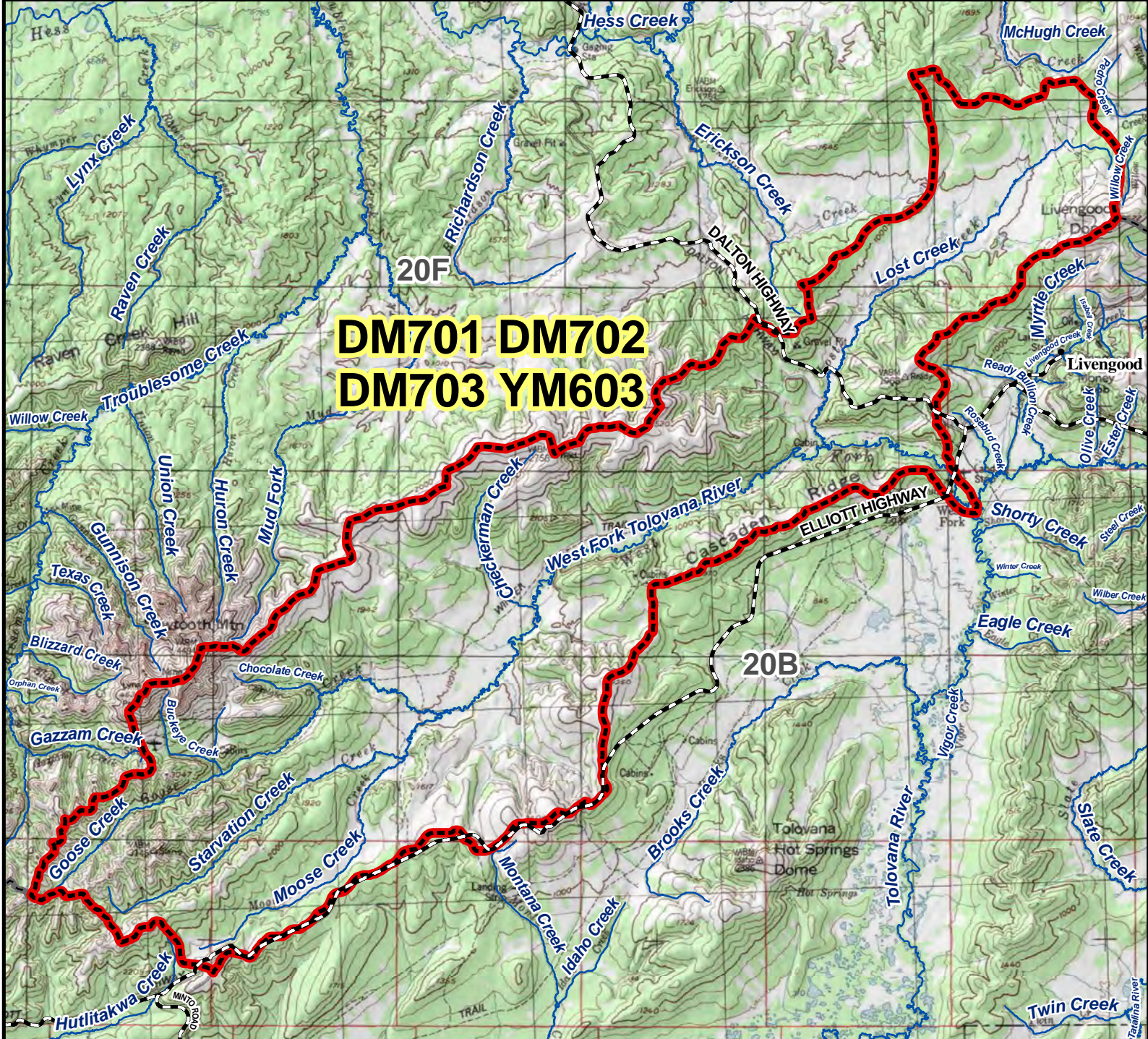


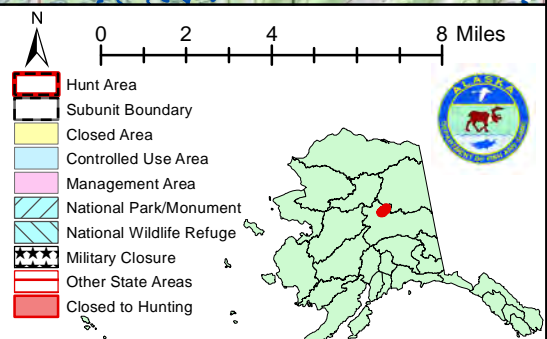
DM701 DM702 DM703 YM603 Moose Drawing and Youth Permit Hunt

This map is intended for hunt planning use, not for determining legal property or regulatory boundaries. Content is compiled from various sources and is subject to change without notice. See current hunting regulations for written descriptions of boundaries. Hunters are responsible for knowing the land ownership and regulations of the areas they intend to hunt.



**DM701 DM702
DM703 YM603**

AREA DESCRIPTION: Unit 20B, that portion drained by West Fork Tolovana River.



Please refer to the Alaska Hunting Regulations booklet for bag type, seasons, and additional regulations concerning this hunt.