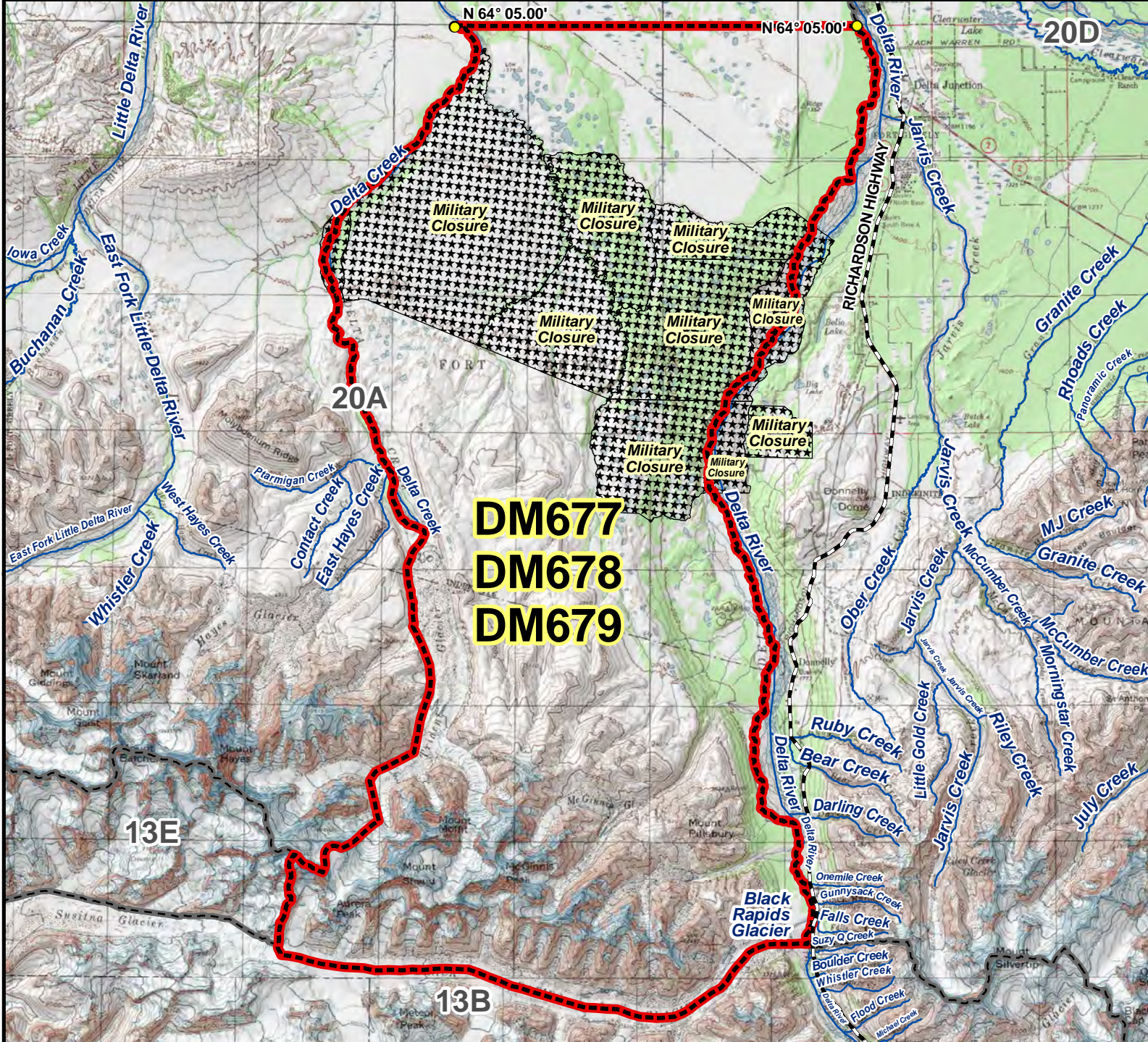
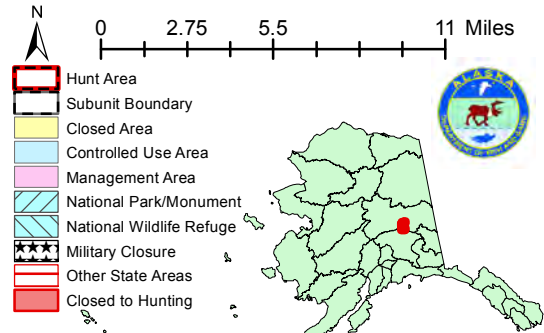


DM677 DM678 DM679 Moose Drawing Permit Hunt

This map is intended for hunt planning use, not for determining legal property or regulatory boundaries. Content is compiled from various sources and is subject to change without notice. See current hunting regulations for written descriptions of boundaries. Hunters are responsible for knowing the land ownership and regulations of the areas they intend to hunt.



AREA DESCRIPTION: Unit 20A, bounded on the north by a line at N 64° 05.00', on the east by the west bank of the Delta River, on the south by Black Rapids Glacier, and on the west by the west bank of Delta Creek.



Please refer to the Alaska Hunting Regulations booklet for bag type, seasons, and additional regulations concerning this hunt.