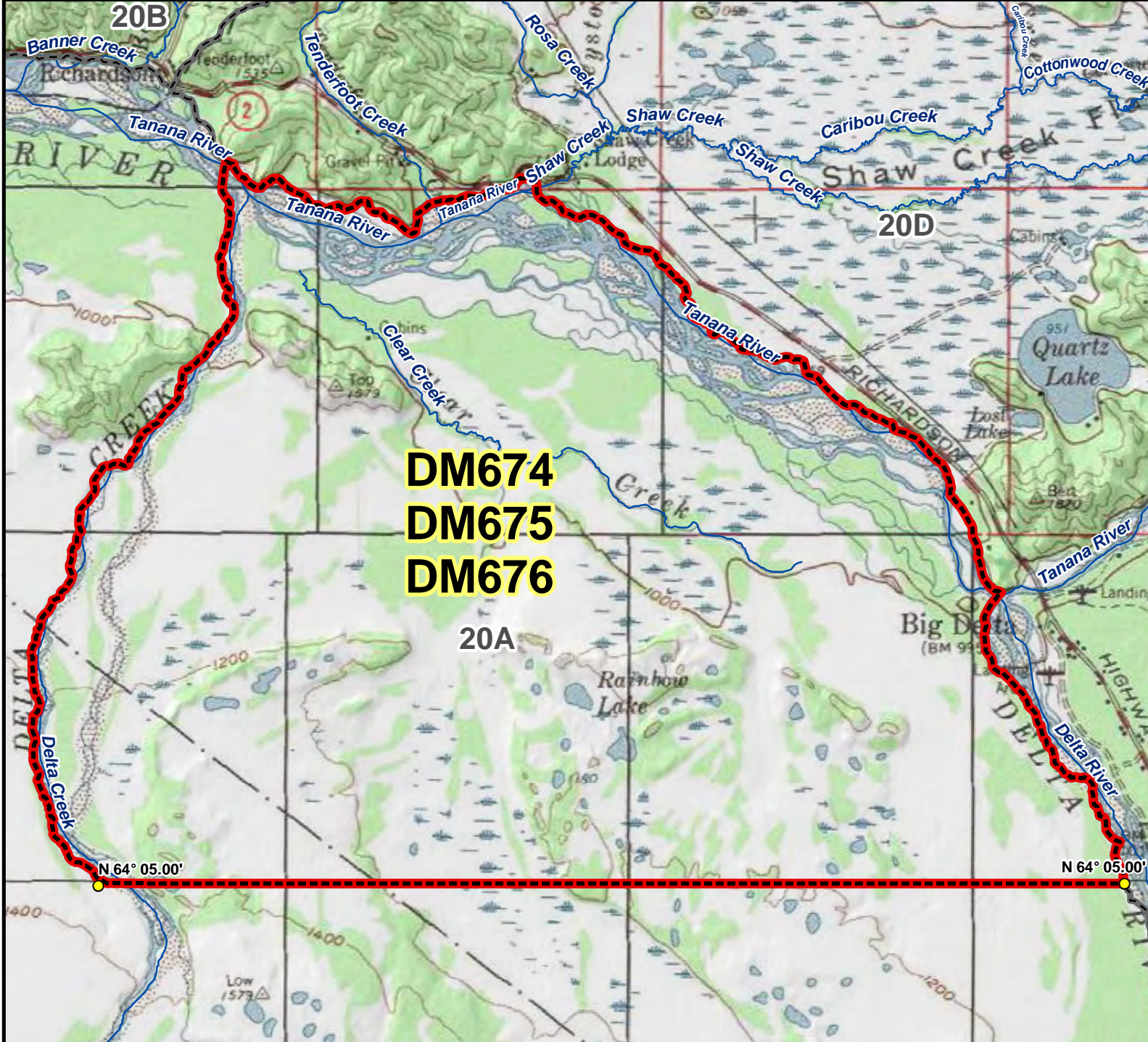


DM674 DM675 DM676 Moose Drawing Permit Hunt

This map is intended for hunt planning use, not for determining legal property or regulatory boundaries. Content is compiled from various sources and is subject to change without notice. See current hunting regulations for written descriptions of boundaries. Hunters are responsible for knowing the land ownership and regulations of the areas they intend to hunt.



DM674
DM675
DM676

AREA DESCRIPTION: Unit 20A, bounded on the north by the north bank of the Tanana River, on the east by the west bank of the Delta River, on the south by a line at N 64° 05.00' and on the west by the west bank of Delta Creek.

