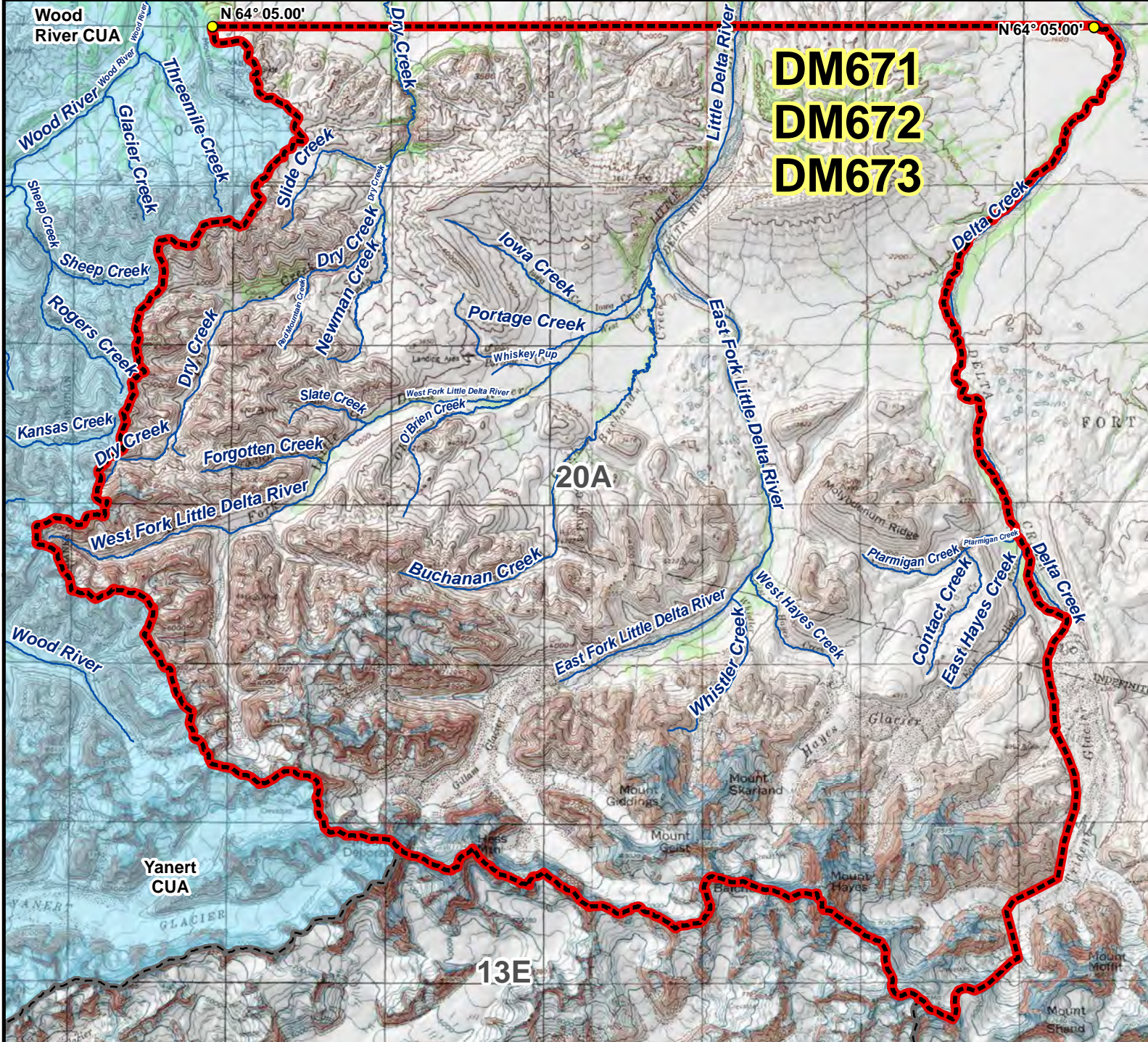


DM671 DM672 DM673 Moose Drawing Permit Hunt

This map is intended for hunt planning use, not for determining legal property or regulatory boundaries. Content is compiled from various sources and is subject to change without notice. See current hunting regulations for written descriptions of boundaries. Hunters are responsible for knowing the land ownership and regulations of the areas they intend to hunt.

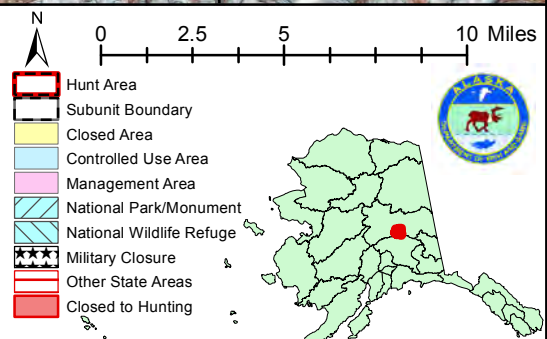


DM671
DM672
DM673

20A

13E

AREA DESCRIPTION: Unit 20A, bounded on the north by a line at N 64° 05.00', on the west by the east boundary of the Wood River CUA, on the south by the northeastern boundary of the Yanert CUA and the Alaska Range Divide, and on the east by the west bank of Delta Creek.



Please refer to the Alaska Hunting Regulations booklet for bag type, seasons, and additional regulations concerning this hunt.