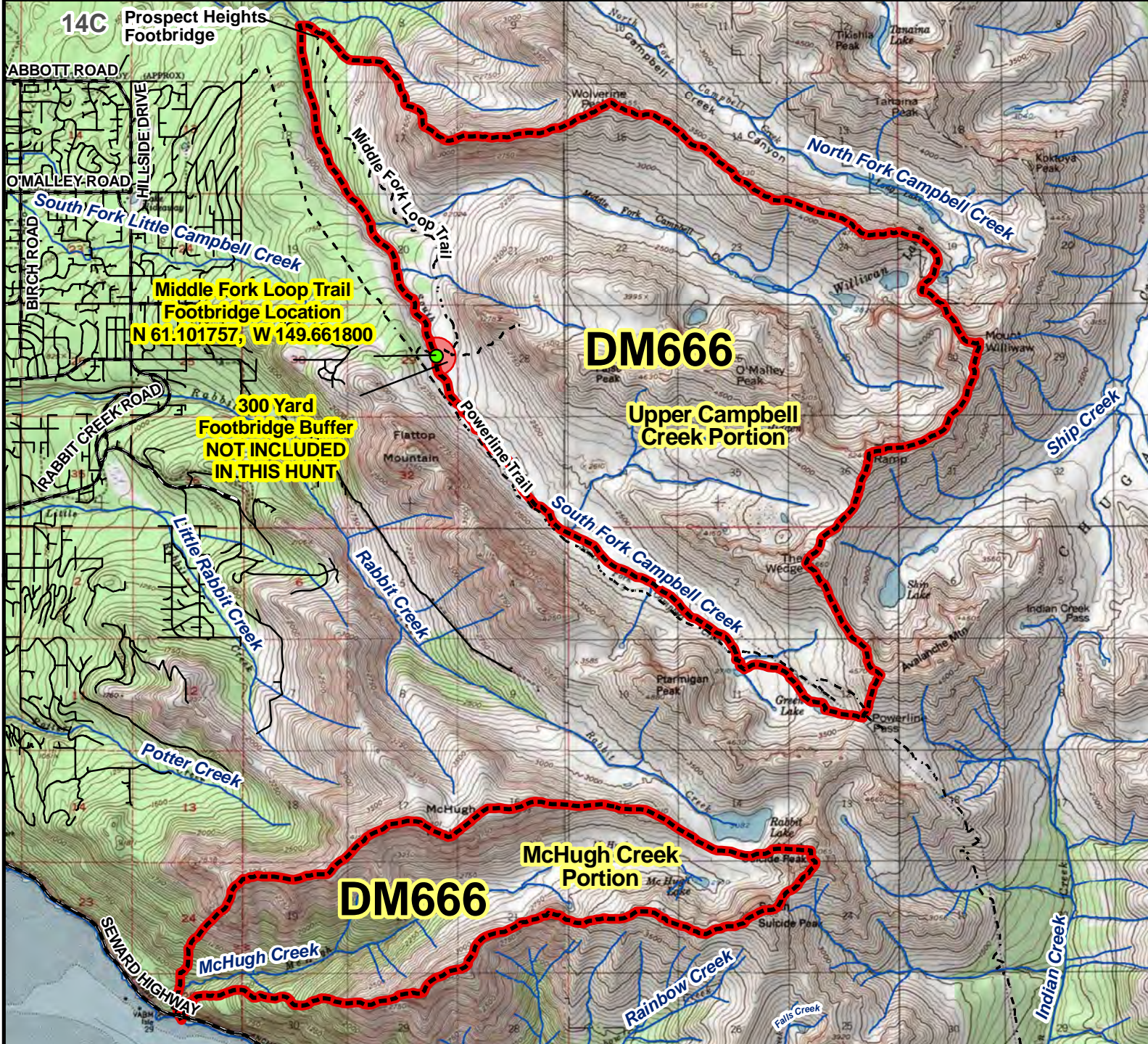


# DM666 Moose Drawing Permit Hunt

This map is intended for hunt planning use, not for determining legal property or regulatory boundaries. Content is compiled from various sources and is subject to change without notice. See current hunting regulations for written descriptions of boundaries. Hunters are responsible for knowing the land ownership and regulations of the areas they intend to hunt.



## AREA DESCRIPTION:

**Upper Campbell Creek Area** - Unit 14C, all drainages flowing west into Campbell Creek upstream from the Prospect Heights footbridge. The boundary runs from the Prospect Heights footbridge upstream to Powerline Pass, and from Powerline Pass along ridgelines to the Wedge, the Ramp, Mount Williwaw, Mount Elliot, Wolverine Peak, Rusty Point and back to the footbridge.

**McHugh Creek Area** - Unit 14C, all drainages in McHugh Creek; however, firearms and bows may not be discharged within 1/2 mile of the Seward Highway.

