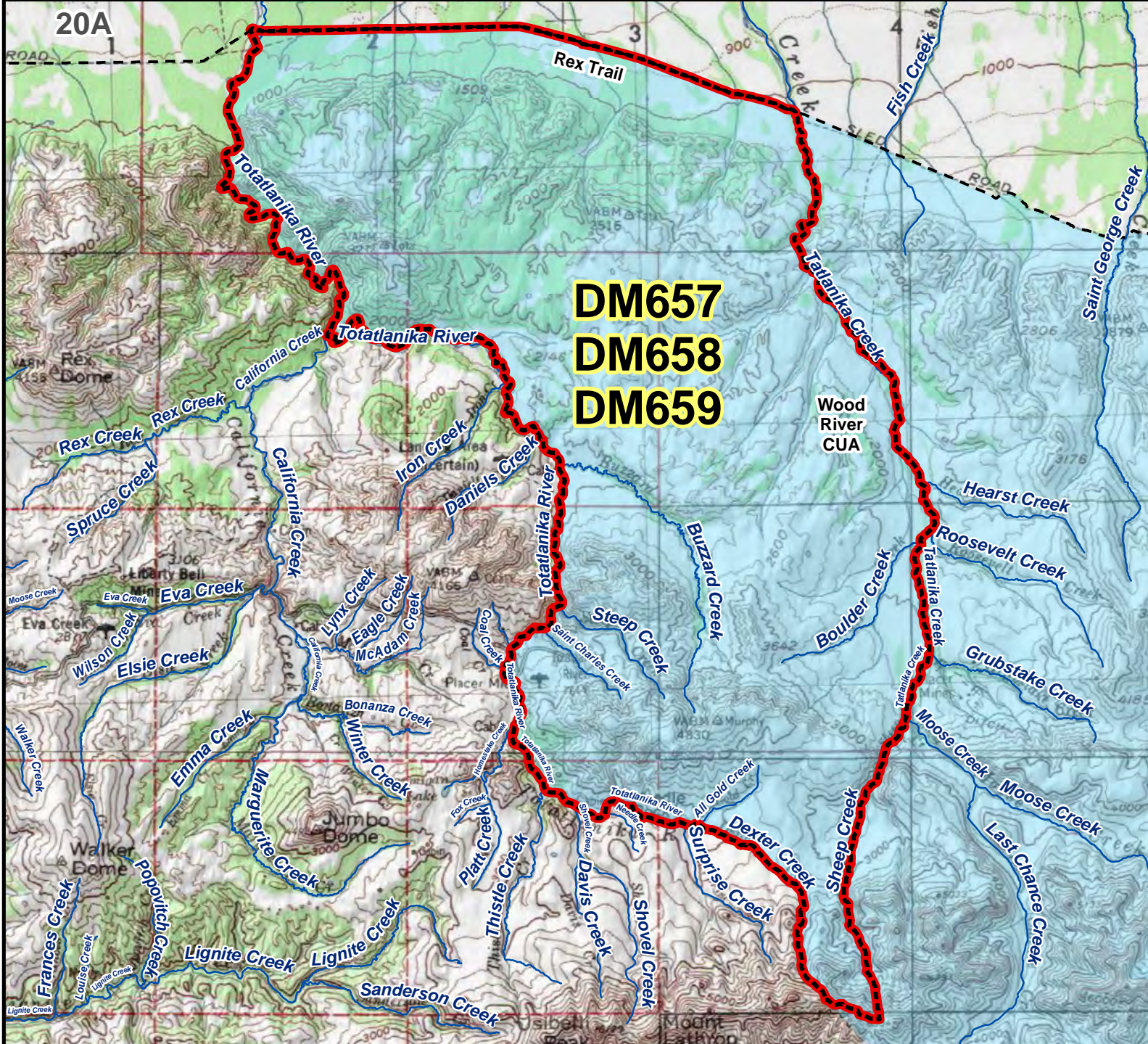


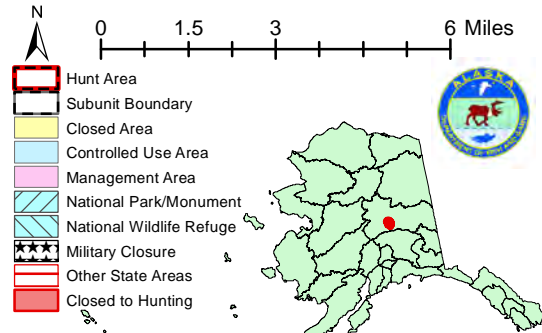
DM657 DM658 DM659 Moose Drawing Permit Hunt

This map is intended for hunt planning use, not for determining legal property or regulatory boundaries. Content is compiled from various sources and is subject to change without notice. See current hunting regulations for written descriptions of boundaries. Hunters are responsible for knowing the land ownership and regulations of the areas they intend to hunt.



DM657
DM658
DM659

AREA DESCRIPTION: Unit 20A, that portion bounded on the north by the Rex Trail, on the east by the east bank of Tattlanika and Sheep Creeks, on the south by the divide separating the Tattlanika Creek drainage from the Healy Creek drainage, and on the west by Dexter Creek and the east bank of the Totatlanika River.



Please refer to the Alaska Hunting Regulations booklet for bag type, seasons, and additional regulations concerning this hunt.