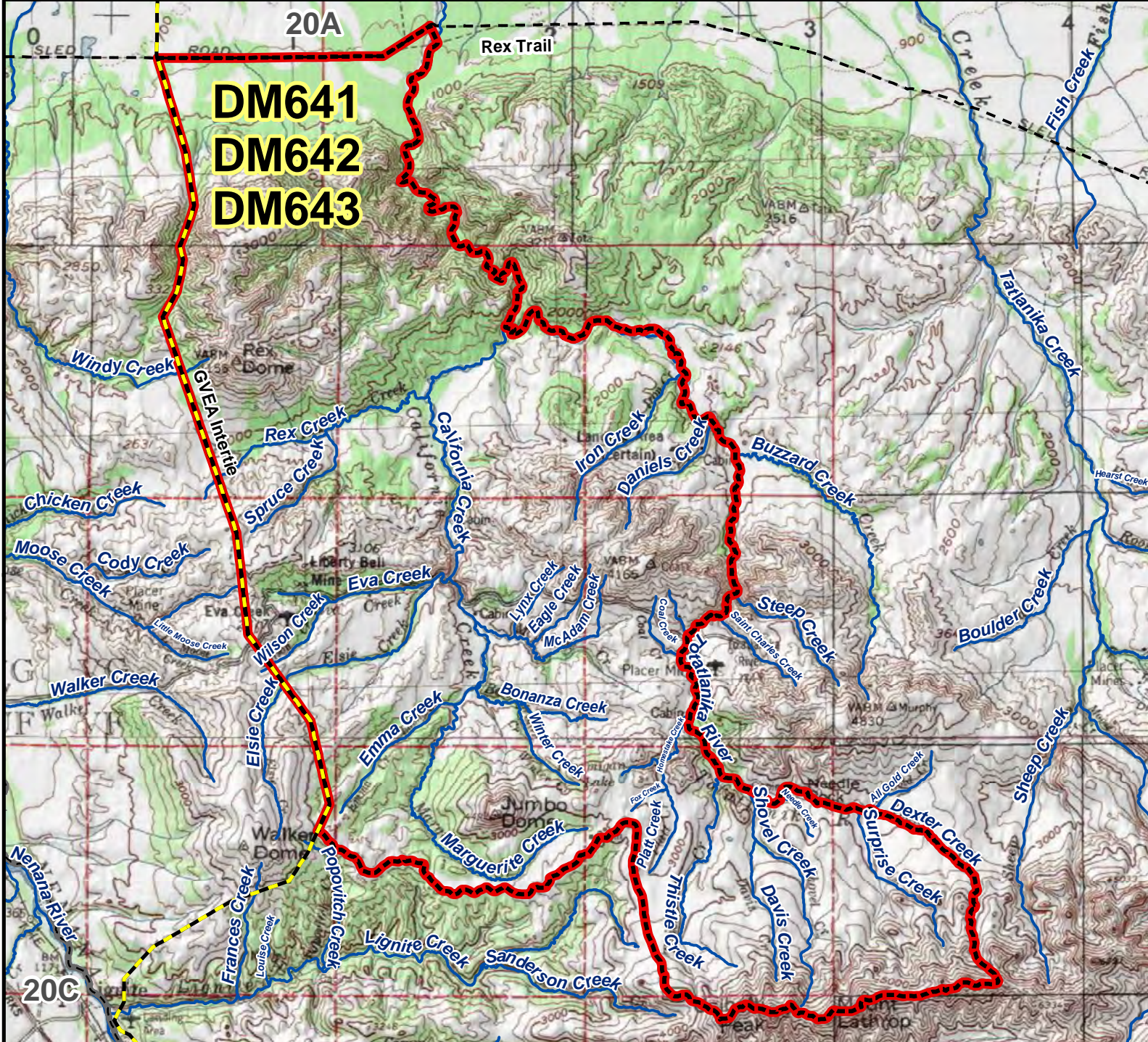
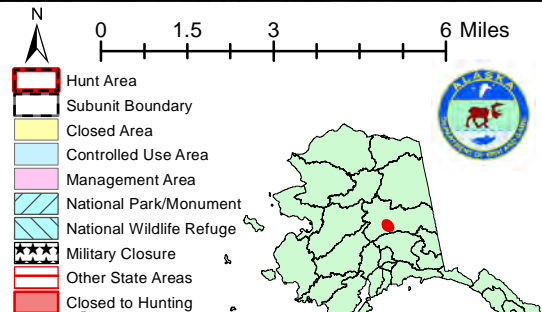


# DM641 DM642 DM643 Moose Drawing Permit Hunt

This map is intended for hunt planning use, not for determining legal property or regulatory boundaries. Content is compiled from various sources and is subject to change without notice. See current hunting regulations for written descriptions of boundaries. Hunters are responsible for knowing the land ownership and regulations of the areas they intend to hunt.



**AREA DESCRIPTION:** Unit 20A, that portion bounded on the north by the south side of the Rex Trail, on the east by the east bank of the Totatlanika River and Dexter Creek, on the south by the divide separating the Totatlanika River/California Creek drainage from the Healy Creek and Lignite Creek drainages, and on the west by the western side of the Golden Valley Electric Association's Northern Intertie.



Please refer to the Alaska Hunting Regulations booklet for bag type, seasons, and additional regulations concerning this hunt.