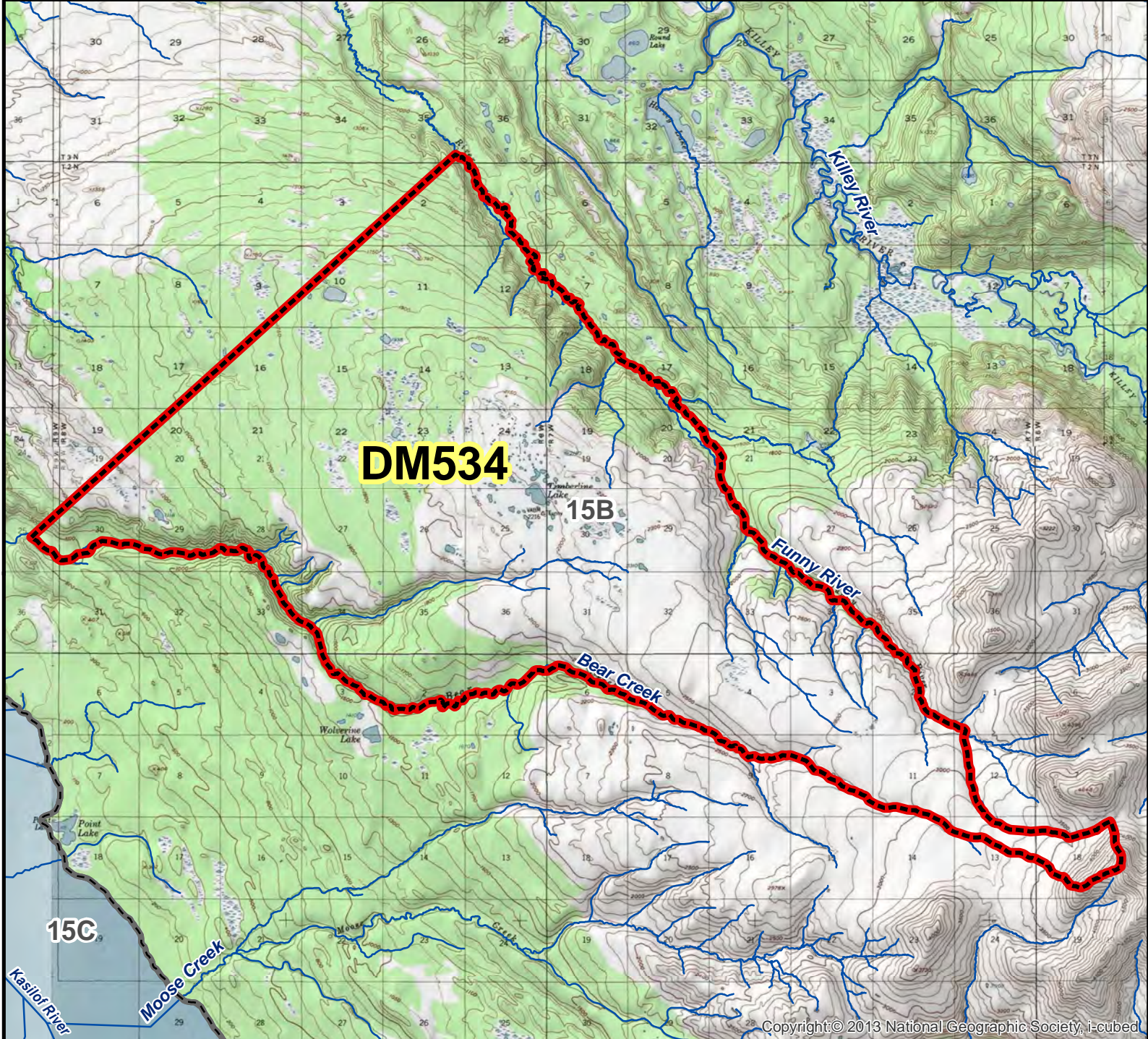


DM534 Moose Drawing Permit Hunt

This map is intended for hunt planning use, not for determining legal property or regulatory boundaries. Content is compiled from various sources and is subject to change without notice. See current hunting regulations for written descriptions of boundaries. Hunters are responsible for knowing the land ownership and regulations of the areas they intend to hunt.



Copyright: © 2013 National Geographic Society, i-cubed

AREA DESCRIPTION: Unit 15B, Timberline Lake, that portion bordered on the northeast by the eastern-most fork of the Funny River to its head, on the south and southwest by Bear Creek, and on the northwest by a line extending southwest to the northeast from the mouth of Bear Creek to the Funny River.

N

0 0.75 1.5 3 Miles

- Hunt Area
- Subunit Boundary
- Closed Area
- Controlled Use Area
- Management Area
- National Park/Monument
- National Wildlife Refuge
- Military Closure
- Other State Areas
- Closed to Hunting

Please refer to the Alaska Hunting Regulations booklet for bag type, seasons, and additional regulations concerning this hunt.