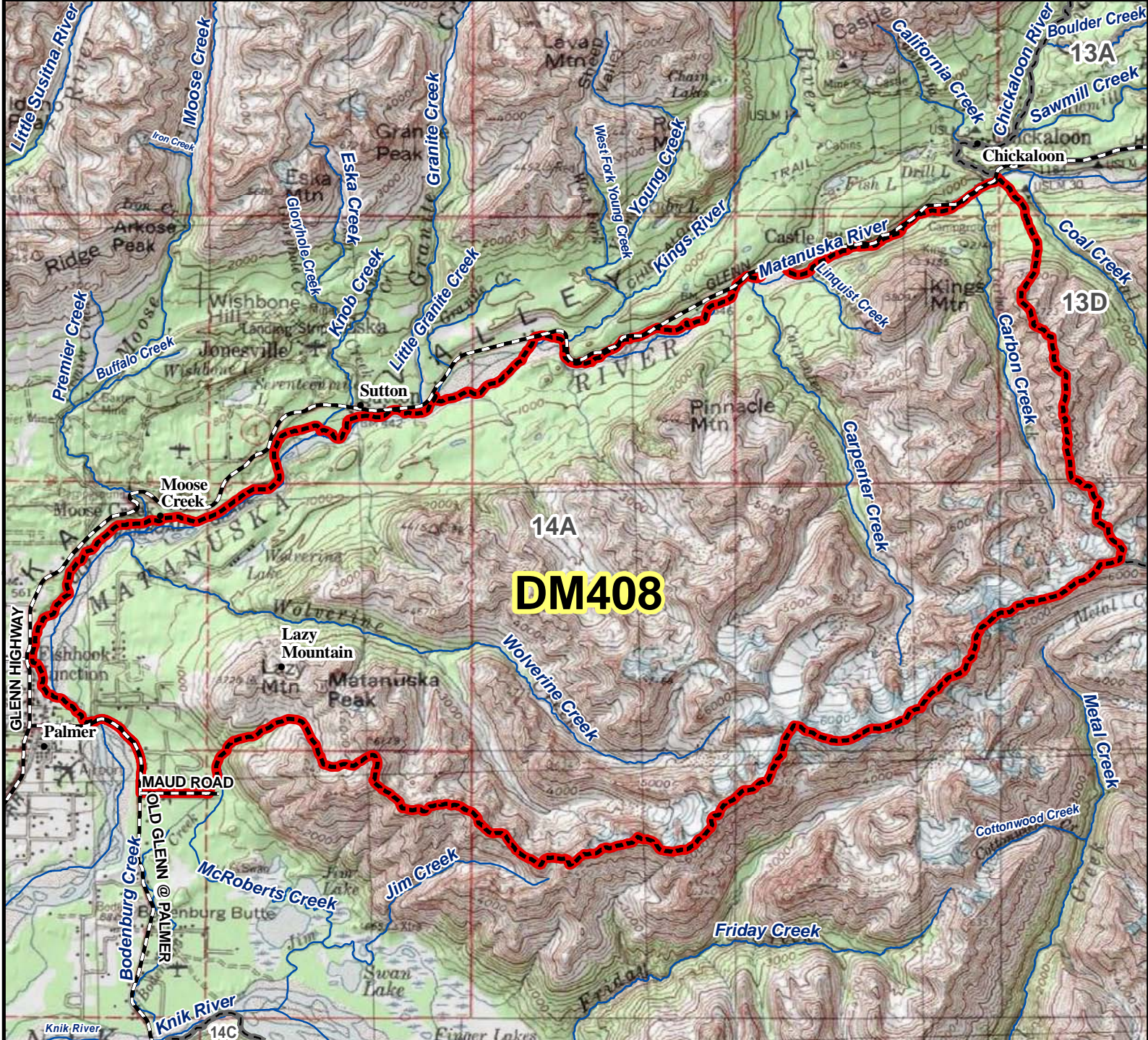


DM408 Moose Drawing Permit Hunt



AREA DESCRIPTION: Unit 14A, South Matanuska River, that eastern portion bounded by a line beginning at the confluence of the north bank of the Matanuska River and the Chickaloon River, then along the north bank of the Matanuska River to the Old Glenn Highway bridge, then southeasterly along the Old Glenn Highway to Maud Road, then easterly along Maud Road to McRoberts Creek, then upstream along McRoberts Creek to its headwaters, then east along the drainage divide between the Knik River and Matanuska River drainages to the Unit 14A boundary, then northerly along the boundary to the point of origin.

