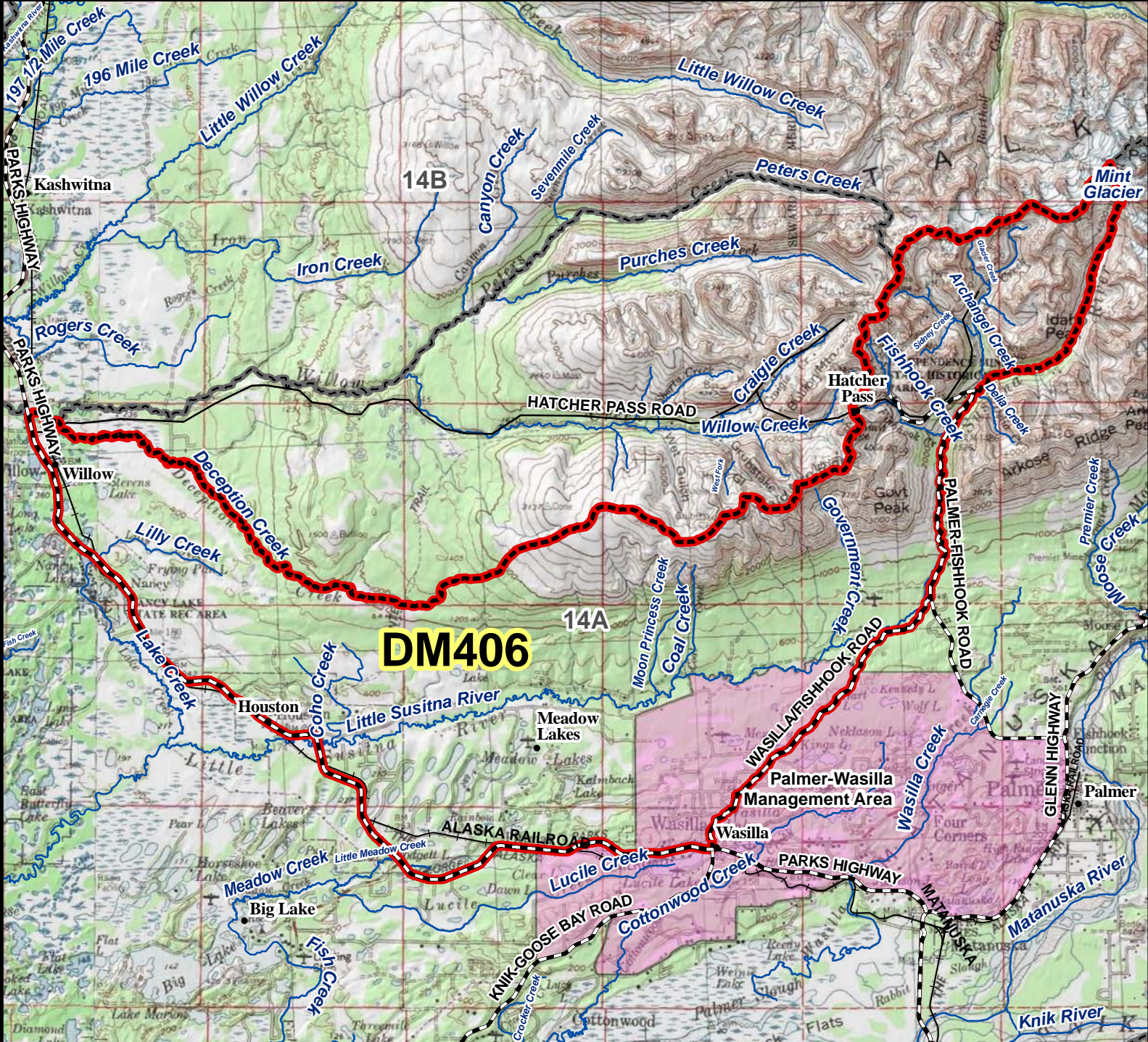


DM406 Moose Drawing Permit Hunt



AREA DESCRIPTION: 14A, Bald Mountain Ridge, that western portion bounded on the south and west by the Parks Highway from Knik-Goose Bay Road to Willow Creek; bounded on the east by a line along Wasilla-Fishhook Road to its junction with Palmer-Fishhook Road, then north along Hatcher Pass Road to the first bridge crossing the Little Susitna River, then along the Little Susitna River to Mint Glacier, then along Mint Glacier to the Unit 14A boundary; and bounded on the north by a line running up Deception Creek from its mouth to its headwaters on Bald Mountain Ridge, then east and north along the drainage divide separating the Willow Creek and Little Susitna River drainages to the Unit boundary.

