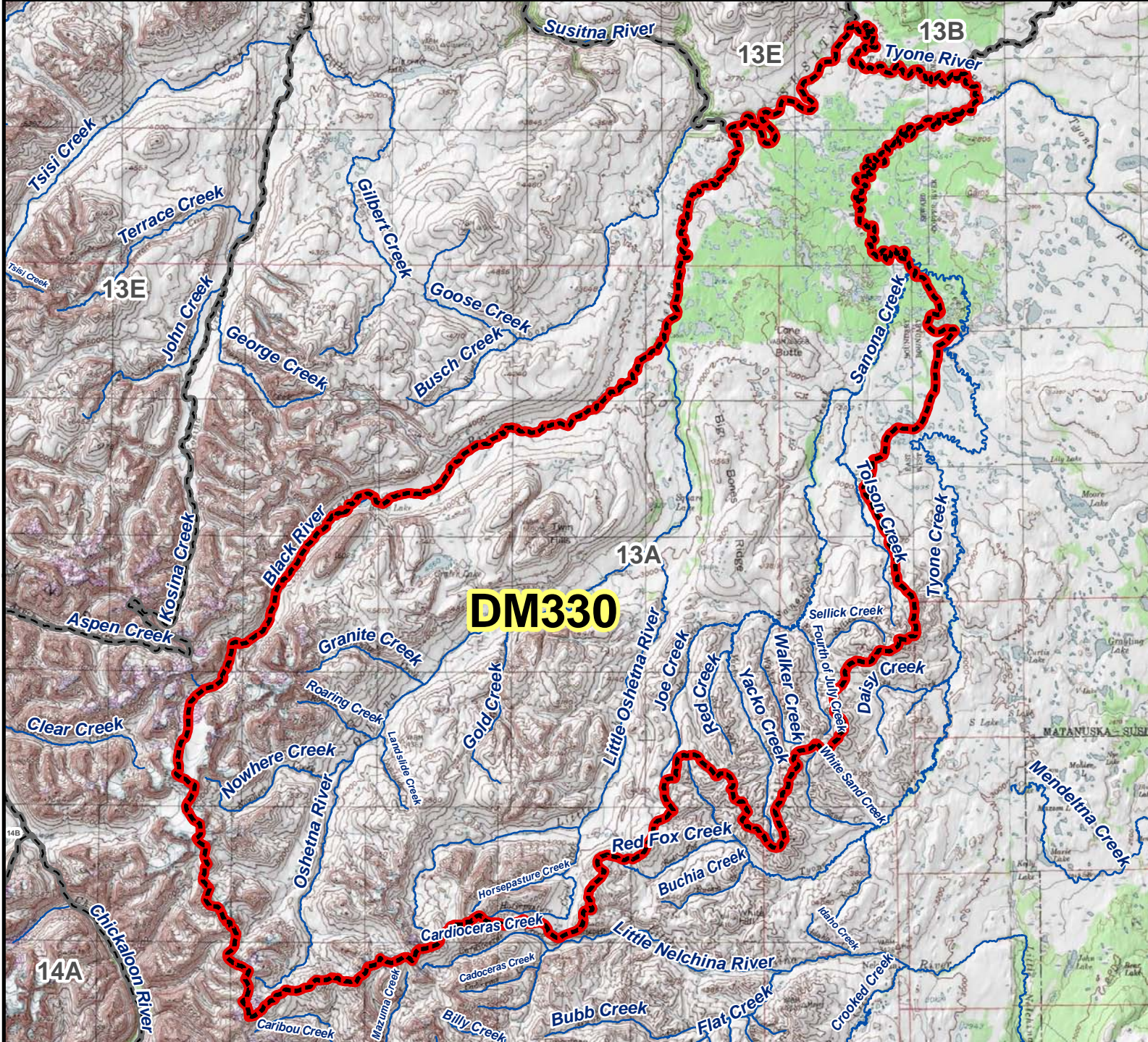


# DM330 Moose Drawing Permit Hunt



**AREA DESCRIPTION:** Unit 13A, the Oshetna River drainages south and east of the Black River, including the drainages into the south bank of the Black River, bounded by a line on the east side of the Sanona Creek drainage to the confluence with Tyone Creek, then downstream on Tyone Creek to its confluence with Tyone River, the Tyone River downstream to the Susitna River, the Susitna River downstream to the Oshetna River, and the Oshetna River upstream to the Black River.

