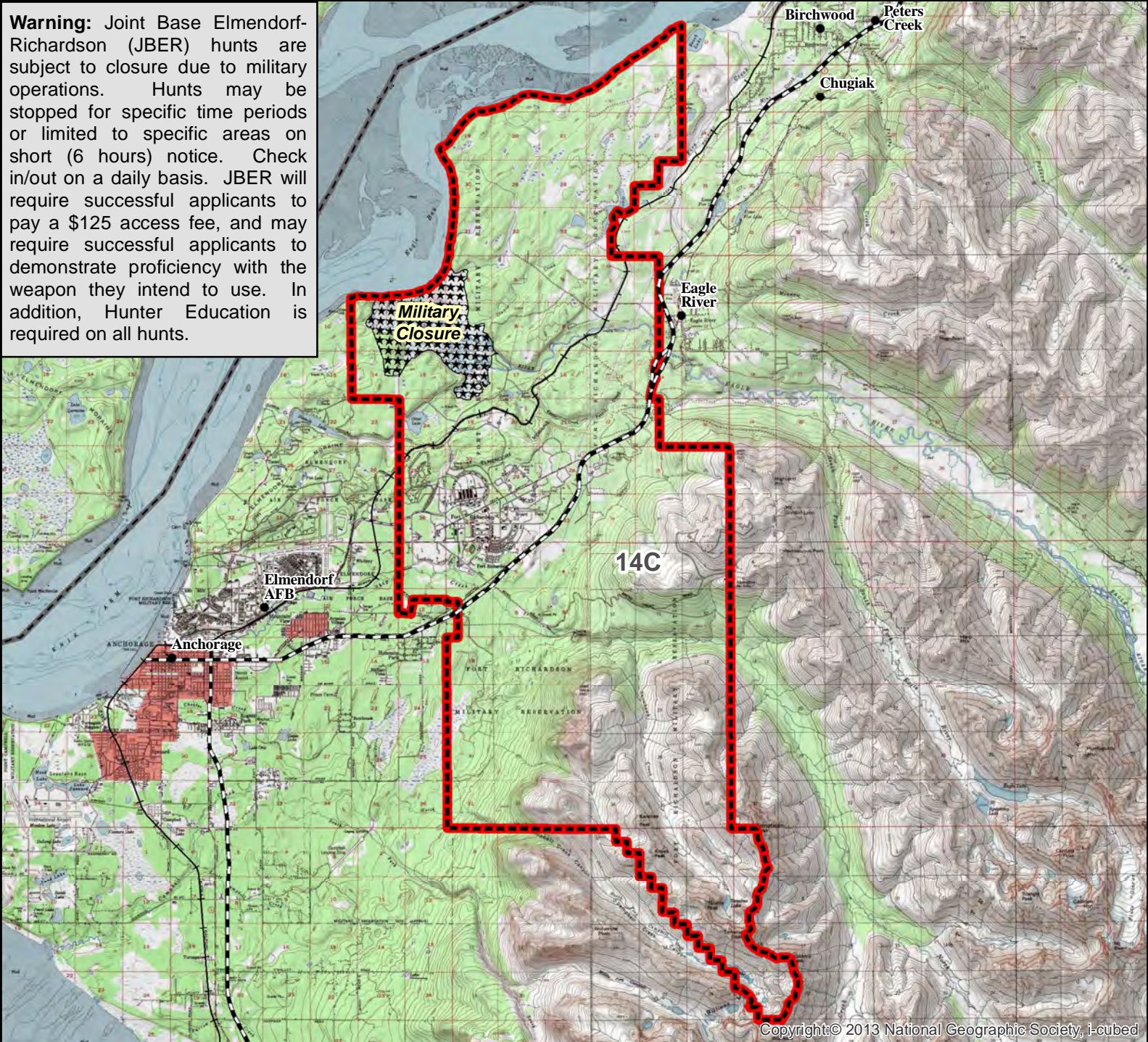


DL455 Black Bear Drawing Permit Hunt

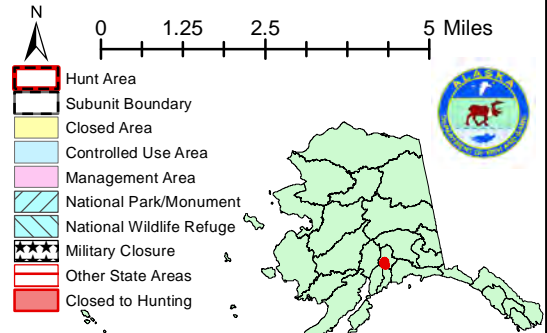
This map is intended for hunt planning use, not for determining legal property or regulatory boundaries. Content is compiled from various sources and is subject to change without notice. See current hunting regulations for written descriptions of boundaries. Hunters are responsible for knowing the land ownership and regulations of the areas they intend to hunt.

Warning: Joint Base Elmendorf-Richardson (JBER) hunts are subject to closure due to military operations. Hunts may be stopped for specific time periods or limited to specific areas on short (6 hours) notice. Check in/out on a daily basis. JBER will require successful applicants to pay a \$125 access fee, and may require successful applicants to demonstrate proficiency with the weapon they intend to use. In addition, Hunter Education is required on all hunts.



Copyright: © 2013 National Geographic Society, i-cubed

AREA DESCRIPTION: Unit 14C, portions of Joint Base Elmendorf-Richardson (JBER) (former Fort Richardson portion)



Please refer to the Alaska Hunting Regulations booklet for bag type, seasons, and additional regulations concerning this hunt.