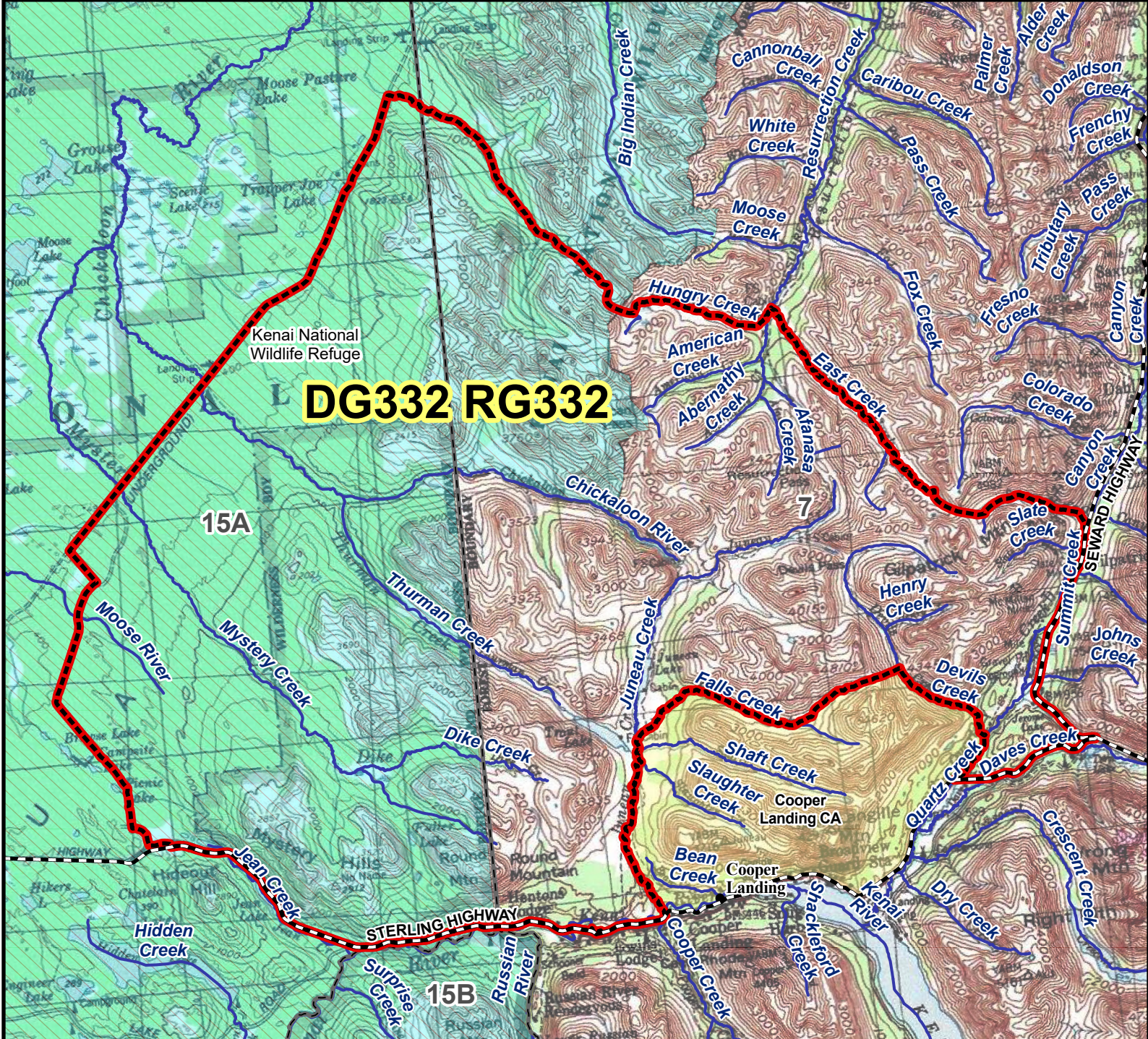


DG332 RG332 Mountain Goat Drawing and Registration Permit Hunt

This map is intended for hunt planning use, not for determining legal property or regulatory boundaries. Content is compiled from various sources and is subject to change without notice. See current hunting regulations for written descriptions of boundaries. Hunters are responsible for knowing the land ownership and regulations of the areas they intend to hunt.

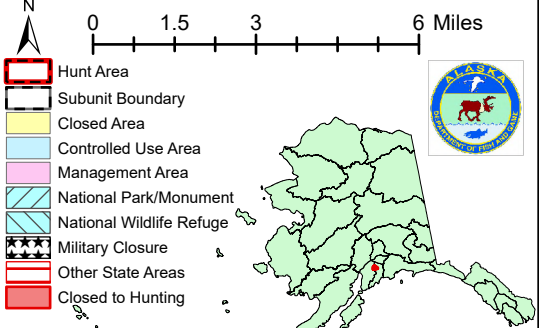


DG332 RG332

15A

15B

AREA DESCRIPTION: Beginning at the point where Summit Creek meets the Seward Highway, South along the Seward Highway to the junction of the Sterling Highway, then west along the Sterling Highway to Quartz Creek, then north up Quartz Creek to its confluence with Devil's Creek, then northwest up Devil's Creek, then over the connecting saddle to Falls Creek, then down Falls Creek to Juneau Creek, down Juneau Creek to the Sterling Highway, then west along the Sterling Highway to Mystery Creek Road, then north along the Mystery Creek Road to the gas pipeline, then north east along the gas pipeline to the creek at the junction of Sections 16 and 17 Township 8 N and Range 4 W, southeast along this creek to the head waters of Hungry Creek, down Hungry Creek to the confluence of Resurrection Creek and East Creek, south east up East Creek to the headwaters of Summit Creek, down Summit Creek to the Seward Highway.



Please refer to the Alaska Hunting Regulations booklet for bag type, seasons, and additional regulations concerning this hunt.