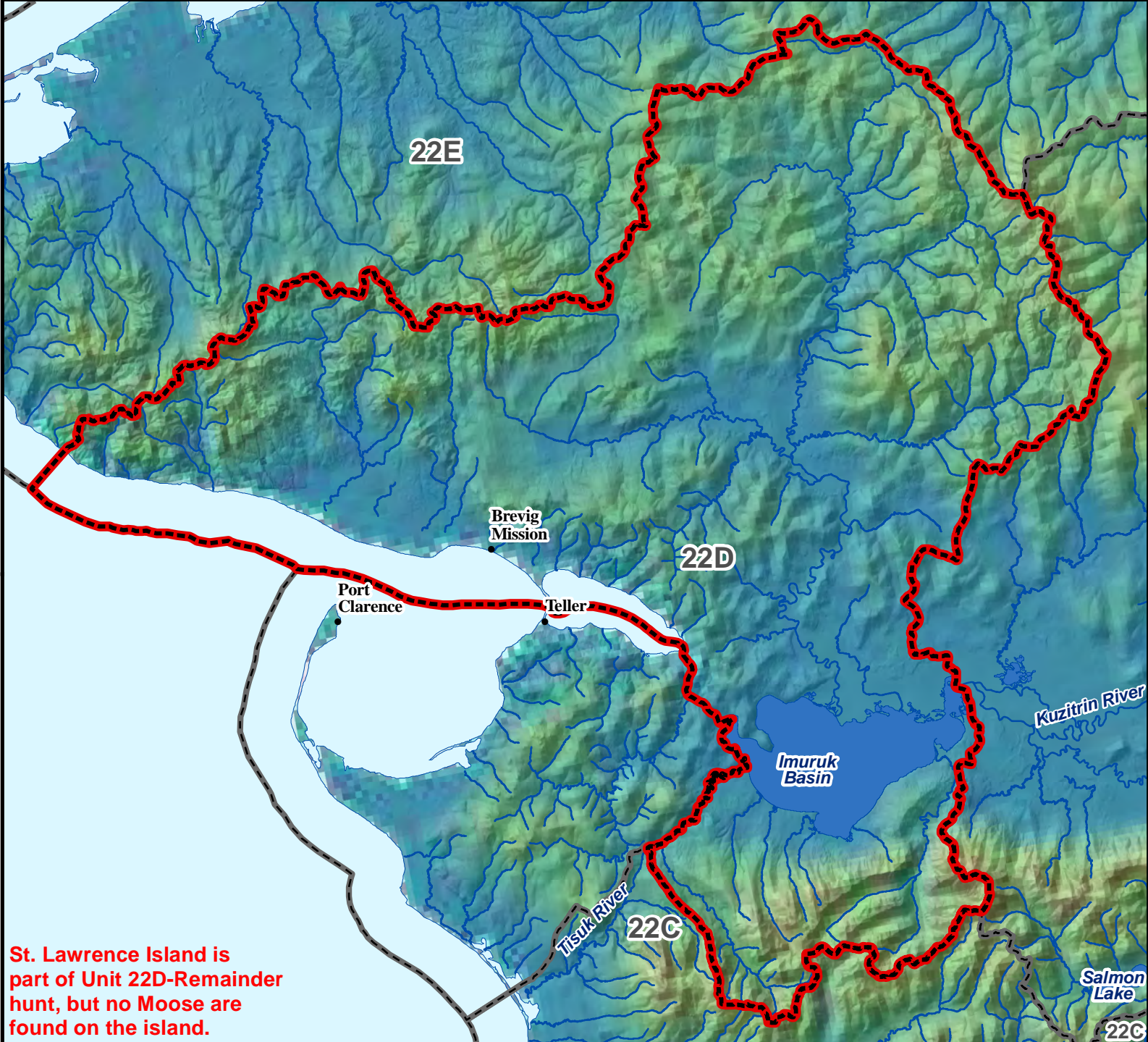


**Nonresidents:**  
**No Open General Season**  
**Hunt; see Alaska Hunting**  
**Regulations booklet**  
**for other hunts in Unit 22.**

# Unit 22D, Remainder Moose - General Hunt

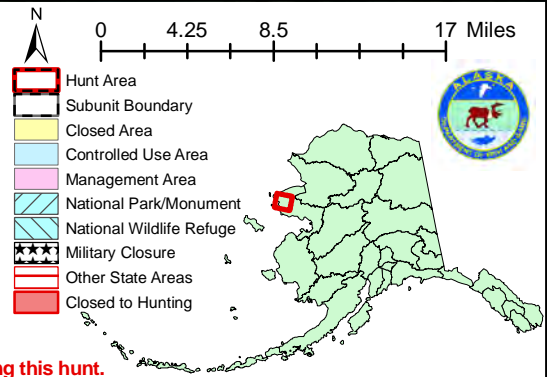
**Residents - Harvest Ticket Required Nonresidents - No Open Season**

This map is intended for hunt planning use, not for determining legal property or regulatory boundaries. Content is compiled from various sources and is subject to change without notice. See current hunting regulations for written descriptions of boundaries. Hunters are responsible for knowing the land ownership and regulations of the areas they intend to hunt.



**St. Lawrence Island is part of Unit 22D-Remainder hunt, but no Moose are found on the island.**

**AREA DESCRIPTION:** Unit 22D, remainder.



**Please refer to the Alaska Hunting Regulations booklet for bag type, seasons, and additional regulations concerning this hunt.**