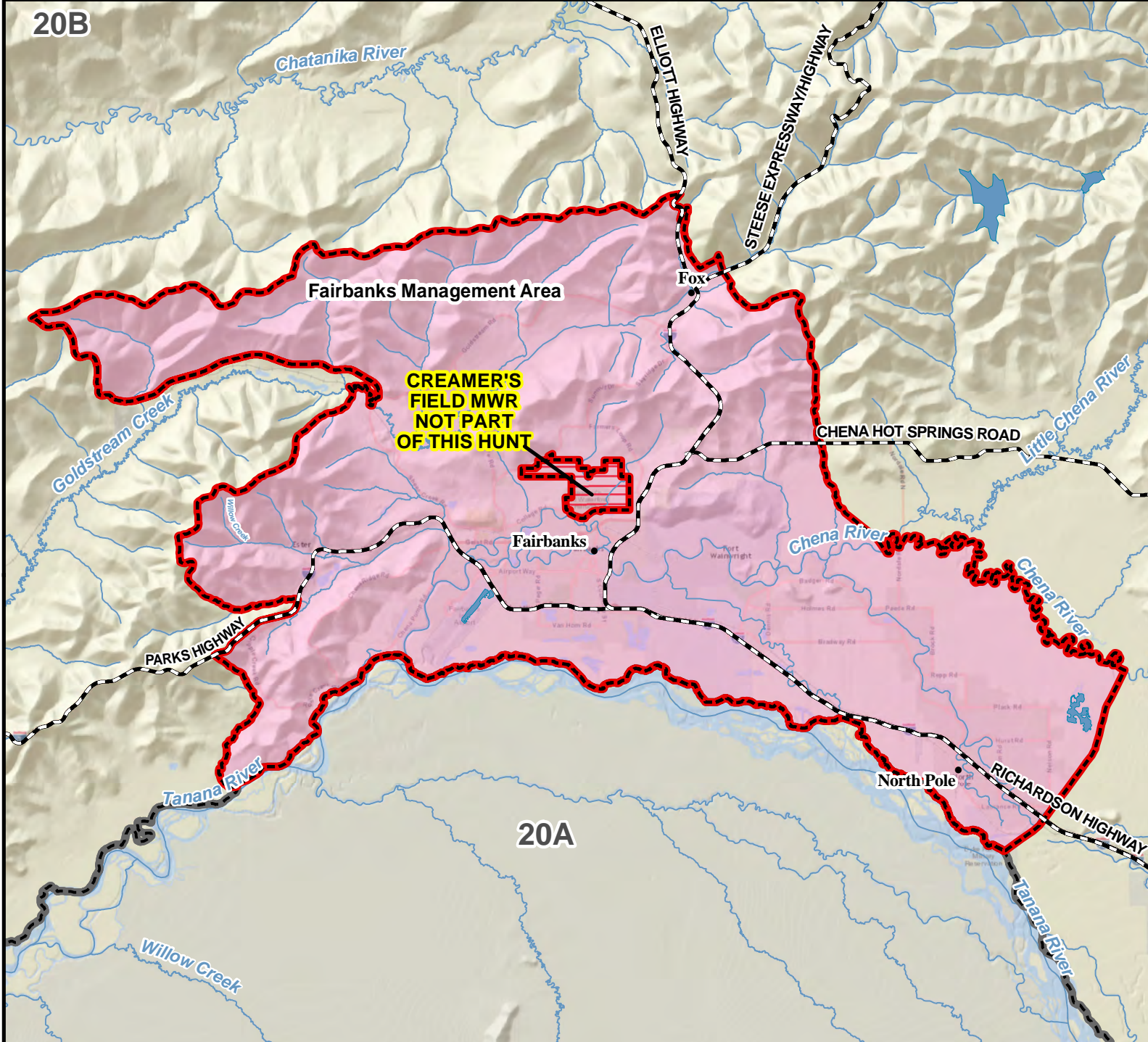


Unit 20B, Remainder of Fairbanks MA

Moose - General Hunt

Residents and Nonresidents - Harvest Ticket Required

This map is intended for hunt planning use, not for determining legal property or regulatory boundaries. Content is compiled from various sources and is subject to change without notice. See current hunting regulations for written descriptions of boundaries. Hunters are responsible for knowing the land ownership and regulations of the areas they intend to hunt.



AREA DESCRIPTION: Unit 20B, remainder of Fairbanks Management Area.

Fairbanks Management Area: this area consists of that portion of Unit 20B bounded by a line from the confluence of Rosie Creek and the Tanana River, northerly along Rosie Creek to the middle fork of Rosie Creek through Section 26 to the Parks Highway, then east along the Parks Highway to Alder Creek, then upstream along Alder Creek to its confluence with Emma Creek, then upstream along Emma Creek to its headwaters, then northerly along the hydrographic divide between Goldstream Creek drainages and Cripple Creek drainages to the summit of Ester Dome, then down Sheep Creek to its confluence with Goldstream Creek, then easterly along Goldstream Creek to Sheep Creek Road, then north on Sheep Creek Road to Murphy Dome Road, then west on Murphy Dome Road to Old Murphy Dome Road, then east on Old Murphy Dome Road to the Elliot Highway, then south on the Elliot Highway to Davidson Ditch, then southeasterly along the Davidson Ditch to its confluence with the tributary to Goldstream Creek in Section 29, then downstream along the tributary to its confluence with Goldstream Creek, then in a straight line to First Chance Creek, then up First Chance Creek to the summit of Tungsten Hill, then southerly along Steele Creek to its intersection with the Trans-Alaska Pipeline right-of-way, then southeasterly along the easterly edge of the Trans-Alaska Pipeline right-of-way to the Chena River, then along the north bank of the Chena River to the Moose Creek dike, then southerly along the Moose Creek dike to its intersection with the Tanana River, and then westerly along the north bank of the Tanana River to the point of beginning.

Please refer to the Alaska Hunting Regulations booklet for bag type, seasons, and additional regulations concerning this hunt.

