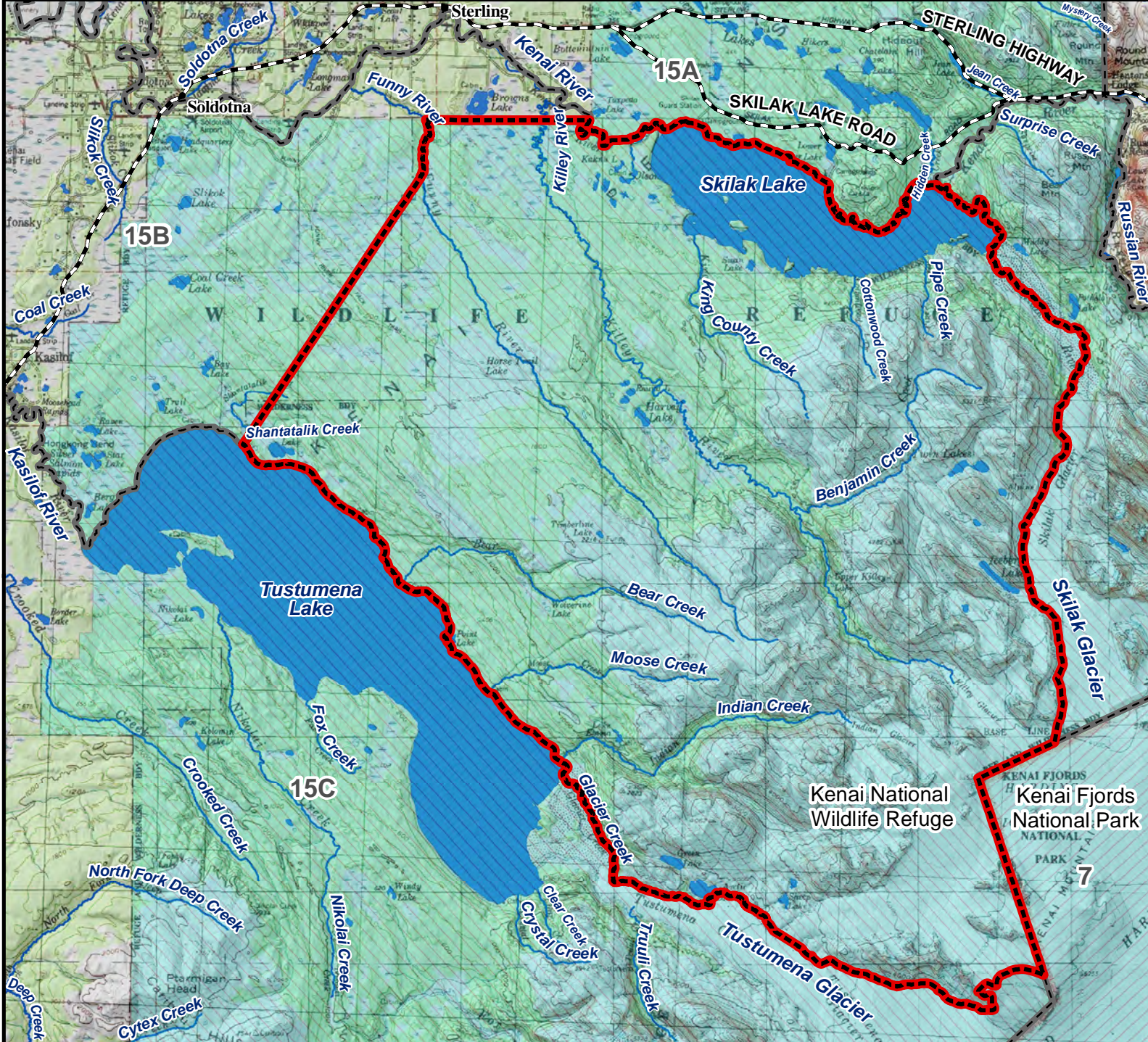


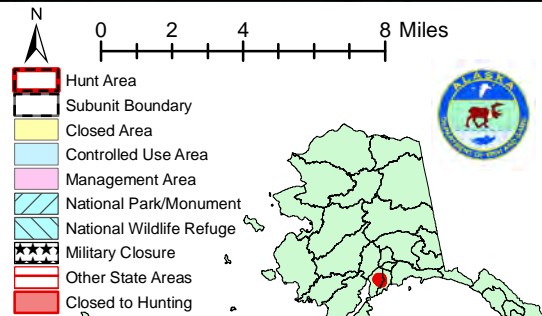
Unit 15B, Skilak to Tustumena Moose - General Hunt

Residents and Nonresidents - Harvest Ticket Required

This map is intended for hunt planning use, not for determining legal property or regulatory boundaries. Content is compiled from various sources and is subject to change without notice. See current hunting regulations for written descriptions of boundaries. Hunters are responsible for knowing the land ownership and regulations of the areas they intend to hunt.



AREA DESCRIPTION: Unit 15b, that portion bounded by a line running from the mouth of Shantatalik Creek on Tustumena Lake, northward to the headwaters of the west fork of Funny River; then downstream along the west fork of Funny River to the Kenai National Wildlife Refuge boundary; then east along the refuge boundary to its junction with the Kenai River; then eastward along the north side of the Kenai River and Skilak Lake; then south along the western side of Skilak River, Skilak Glacier, and Harding Icefield; then west along the Unit 15B boundary to the mouth of Shantatalik Creek.



Please refer to the Alaska Hunting Regulations booklet for bag type, seasons, and additional regulations concerning this hunt.