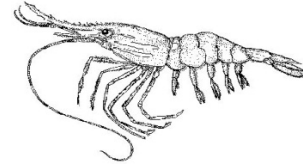

ALASKA DEPARTMENT OF FISH AND GAME
DIVISION OF COMMERCIAL FISHERIES
NEWS RELEASE



Cora Campbell, Commissioner
Jeff Regnart, Director



Contact:
Bill Davidson

Phone: (907) 747-8274
Fax: (907) 747-6693

Sitka Area Office
304 Lake Street, Room 103
Sitka, Alaska

Date: October 13, 2011
Time: 3:31 p.m.

SOUTHEAST ALASKA COMMERCIAL POT SHRIMP FISHERY UPDATE

Sitka . . The Alaska Department of Fish and Game today announced the following information to assist harvesters and processors involved in the Southeast Alaska pot shrimp fishery. This notification is for information only and is expected to change as the fishing fleet moves from previously closed districts. Specific closure announcements will generally occur for each district two or three days prior to the closure. Catch estimates are as of October 13, 2011. The next shrimp pot update will occur on **Thursday, October 20, 2011**.

District 1: Estimated harvest: 29,000 pounds, 21,000 pounds remaining. Sections of District 1 will close on Friday, October 21, and the remainder of District 1 is scheduled to close on Monday, November 7. If effort and harvest levels increase substantially, District 1 may close before November 7.

District 2: Estimated harvest: 35,000 pounds, 30,000 pounds remaining. It is estimated the season could close on October 20.

Section 3A: Estimated harvest: 71,000 pounds, 24,000 pounds remaining. It is estimated the season could close on October 18.

Section 3-B/C: Harvest is confidential, fewer than three vessels reporting. The GHLL is 30,000 pounds. It is estimated the season could close between October 28 and November 11.

District 4: No reported harvest. The GHLL is 20,000 pounds. It is estimated the season could close between October 31 and February 28.

District 5: No reported harvest. The GHLL is 20,000 pounds. It is estimated the season could close on February 28, 2012.

District 6: Reported harvest: 31,734 pounds. **District 6 closed October 10.**

District 7: Reported harvest: 42,771 pounds. **District 7 closed October 12.**

District 8: Estimated harvest: 3,500 pounds, 11,500 pounds remaining. The GHL is 15,000 pounds. It is estimated the season could close between October 21 and October 31.

District 9: Estimated harvest: 12,000 pounds. **District 9 closed October 10.**

District 10: Reported harvest: 43,274 pounds. District 10 closed October 7.

District 11: Estimated harvest: 21,500 pounds. District 11 closed October 6.

District 12-Tenakee: Closed.

District 12-Remainder of District: Estimated harvest: 6,500 pounds, 3,500 pounds remaining. It is estimated the season could close between October 18 and October 22.

Section 13-A/B: Estimated harvest: 3,000 pounds, 12,000 pounds remaining. It is estimated the season could close between November 10 and November 30.

Section 13-C: Reported harvest: 37,389 pounds. Section 13-C closed October 4.

District 14: Closed.

District 15: Harvest is confidential, fewer than three vessels reporting. The GHL is 15,000 lbs. It is estimated the season could close between November 6 and February 28.

District 16: Closed.

Number of boats, week 42 (Oct 9 - 15). Data compiled October 13										
District	1	2	3A	3B/C	4	5	8	12RoD	13A/B	15
Boats	15	13	13	*	0	0	6	7	6	*
*Confidential										
Closed: Districts 6, 7, 9, 10, 11, 14, 16 and Sections 12T, 13-C										

All commercial shrimp fishermen are required to notify the department within two business days of deploying gear and within two business days after ceasing fishing in a district, or portion of a district, with a GHL.

Catcher-processors and catcher sellers must call the Fish and Game area office that manage the district they are fishing and report catch information between 8:00 a.m. and 4:30 p.m. once per week by 12:00 noon each Wednesday, every week they conduct fishing operations.

If warranted, the department may re-open a district 14 days after a closure, with a four-day notice. The estimate for when a district is to close may be highly variable. The redistribution of effort as the season progresses may greatly influence the daily harvest rates in districts.

News releases web site: <http://www.adfg.alaska.gov/index.cfm?adfg=cfnews.main>.

<i>Office</i>	<i>Ketchikan</i>	<i>Petersburg</i>	<i>Wrangell</i>	<i>Sitka</i>	<i>Juneau</i>	<i>Haines</i>	<i>Yakutat</i>
<i>ADFG</i>	<i>225-5195</i>	<i>772-3801</i>	<i>874-3822</i>	<i>747-6688</i>	<i>465-4250</i>	<i>766-2830</i>	<i>784-3255</i>
<i>AWT</i>	<i>225-5111</i>	<i>772-3983</i>	<i>874-3215</i>	<i>747-3254</i>	<i>465-4000</i>	<i>766-2533</i>	<i>784-3220</i>
<i>Shrimp Hotline</i>	<i>225-6870</i>	<i>772-3700</i>			<i>465-8905</i>		