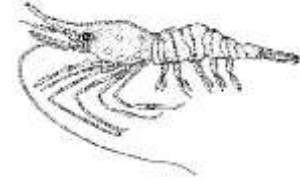


**ALASKA DEPARTMENT OF FISH AND GAME
DIVISION OF COMMERCIAL FISHERIES
NEWS RELEASE**



*Cora Campbell, Commissioner
Jeff Regnart, Director*



Contact:
Maria Wessel, Shellfish Management Biologist

Cordova Area Office
P.O. Box 669
Cordova, Alaska 99574

Phone: (907) 424-3212
Fax: (907) 424-3235

Date Issued: 5/3/13

**FISHERY ANNOUNCEMENT
PRINCE WILLIAM SOUND REGISTRATION AREA E
COMMERCIAL SHRIMP POT FISHERY
EMERGENCY ORDER 2-SF-E-03-13**

The fourth period of the Prince William Sound (PWS) Area E commercial shrimp pot fishery **will open as previously announced at 8:00 a.m. Monday, May 6** and will remain open until the guideline harvest level (GHL) of 66,300 lb is achieved or September 15, unless closed earlier by emergency order. Gear limits remain at a maximum of **40 pots per vessel** for all open areas and hours of gear operation remain from **8:00 a.m. to 8:00 p.m.** New management actions will be in effect and are explained below.

Statistical area 476036 will be closed to commercial harvest.

The third period of the PWS commercial shrimp pot fishery opened at 8:00 a.m. April 29 and closed at 8:00 p.m. May 2. Information from the call-in reports indicates that approximately 7,357 lb of shrimp was harvested by 26 vessels in 26 landings during the third period. The total reported season harvest is approximately 21,760 lb of shrimp harvested by 38 vessels in 67 landings. Overall catch per unit effort (CPUE) is 2.11 lb of whole shrimp per pot.

Because 5 AAC 31.214 limits harvest in any one statistical area to no more than 25% (16,575 lb) of the overall GHL, statistical areas will be closing independently within the open area. Reports indicate approximately 13,302 lb of shrimp has been harvested from statistical area 476036 and projections indicate that the 25% GHL harvest cap will be achieved in this statistical area. Current reports indicate that approximately 3,800 lb has been harvested from statistical area 476101 and 2,800 lb has been harvested from statistical area 476033. Harvest remains confidential in all other statistical areas.

In addition to logbook and landing requirements, **all participants must call ADF&G at (907) 424-7215 each Wednesday before noon** and report any harvest that occurred during the previous 7 days. Other regulations are found in Chapters 31 and 39 of the **2012-2015 Statewide Commercial Shrimp, Dungeness Crab, and Miscellaneous Shellfish Fishing Regulations** book, available at department offices in Cordova, Homer and Anchorage, or online at <http://www.adfg.alaska.gov/static/regulations/fishregulations/pdfs/commercial/MiscShellfish-2012-2015.pdf>.

-end-

@BCL@B00C19D3