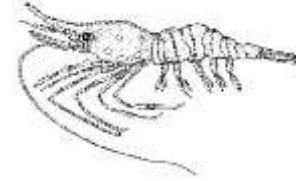


**ALASKA DEPARTMENT OF FISH AND GAME
DIVISION OF COMMERCIAL FISHERIES
NEWS RELEASE**



*Cora Campbell, Commissioner
Jeff Regnart, Director*



Contact:
Maria Wessel, Shellfish Management Biologist

Cordova Area Office
P.O. Box 669
Cordova, Alaska 99574

Phone: (907) 424-3212
Fax: (907) 424-3235

Date Issued: 2/15/13

**FISHERY UPDATE
PRINCE WILLIAM SOUND REGISTRATION AREA E
COMMERCIAL SHRIMP POT FISHERY
REGISTRATION DEADLINE AND SEASON OPENING DATE**

The Prince William Sound (PWS) commercial shrimp pot fishing season will open at 8:00 a.m. April 15, 2013 with a 66,300 pound guideline harvest level. To participate, individuals must possess a 2013 P09E or P91E interim use permit available from the Commercial Fisheries Entry Commission (http://www.cfec.state.ak.us/forms/Commercial_Fishing_Permit_Application.pdf or ph: 789-6150) and an exclusive area vessel registration. Registrations and required logbook pages are available at Alaska Department of Fish and Game (ADF&G) offices in Anchorage, Cordova, and Homer, and by appointment with the Alaska Wildlife Troopers in Seward and Valdez. Contact the ADF&G office in Cordova to register by fax. **The registration deadline for the PWS shrimp pot fishery is 5:00 p.m. Monday, April 1, 2013.** The department will announce on April 5 the number of shrimp pots that may be operated from a vessel registered for the fishery. Area 1 is open to harvest and includes only those waters indicated on the attached map (Figure 1).

Fishery management and other pertinent regulations are found in Chapters 31 and 39 of the **2012-2015 Statewide Commercial Shrimp, Dungeness Crab, and Miscellaneous Shellfish Fishing Regulations** book, available at ADF&G offices or online at <http://www.adfg.alaska.gov/static/regulations/fishregulations/pdfs/commercial/MiscShellfish-2012-2015.pdf>. Prospective fishery participants should thoroughly review the regulatory requirements for this fishery.

-end-

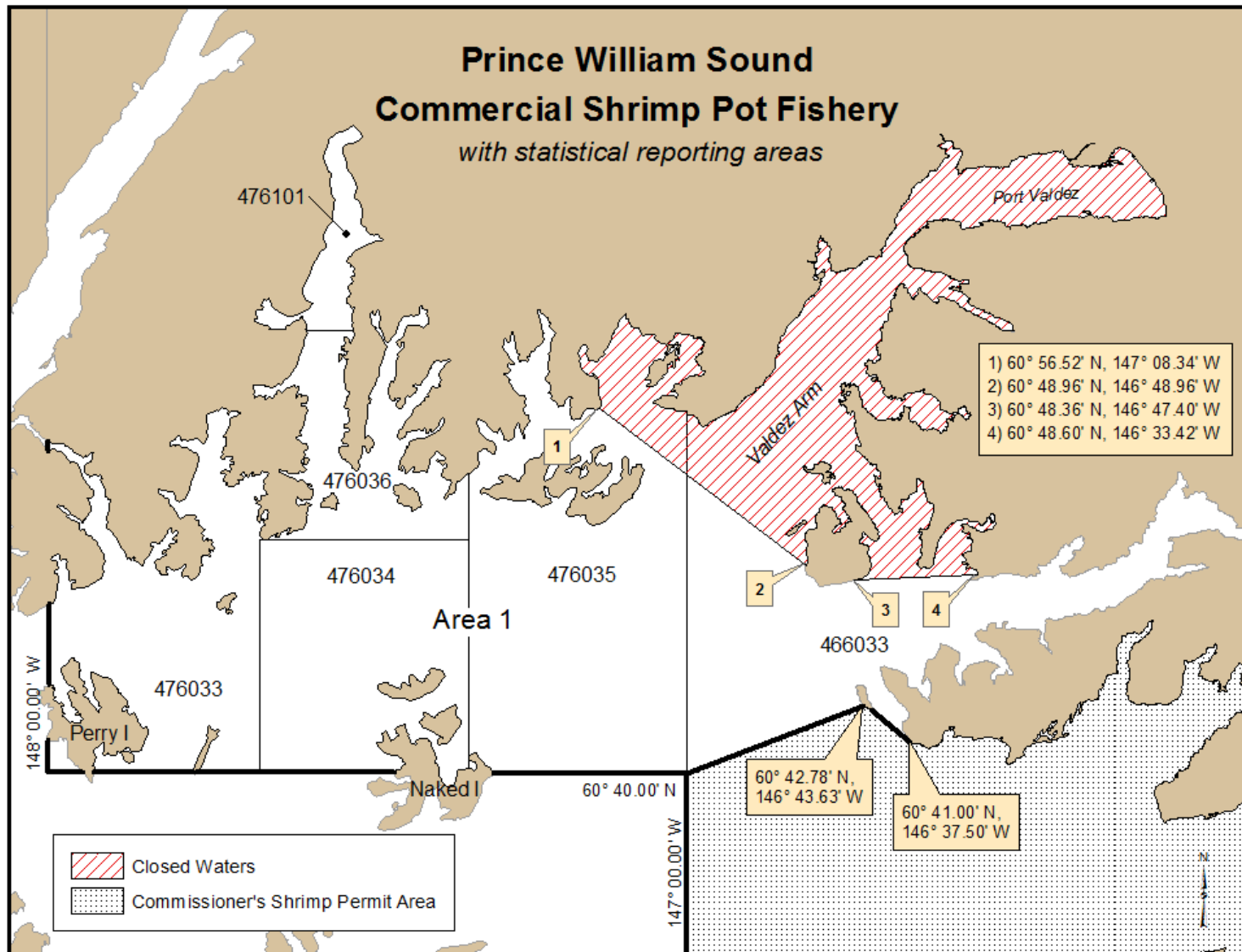


Figure 1. Map depicting the 2013 Prince William Sound commercial shrimp pot fishing area.