

**ALASKA DEPARTMENT OF FISH AND GAME
DIVISION OF COMMERCIAL FISHERIES
NEWS RELEASE**



*Cora Campbell, Commissioner
Jeff Regnart, Director*



Contact: Jeff Fox, Area Management Biologist; Pat Shields, Assistant Area Management Biologist
43961 Kalifornsky Beach Rd, Suite B Soldotna, AK 99669
Phone: (907) 262-9368 Fax: (907) 262-4709
Date Issued: May 24, 2011 Time: 11:00 a.m.

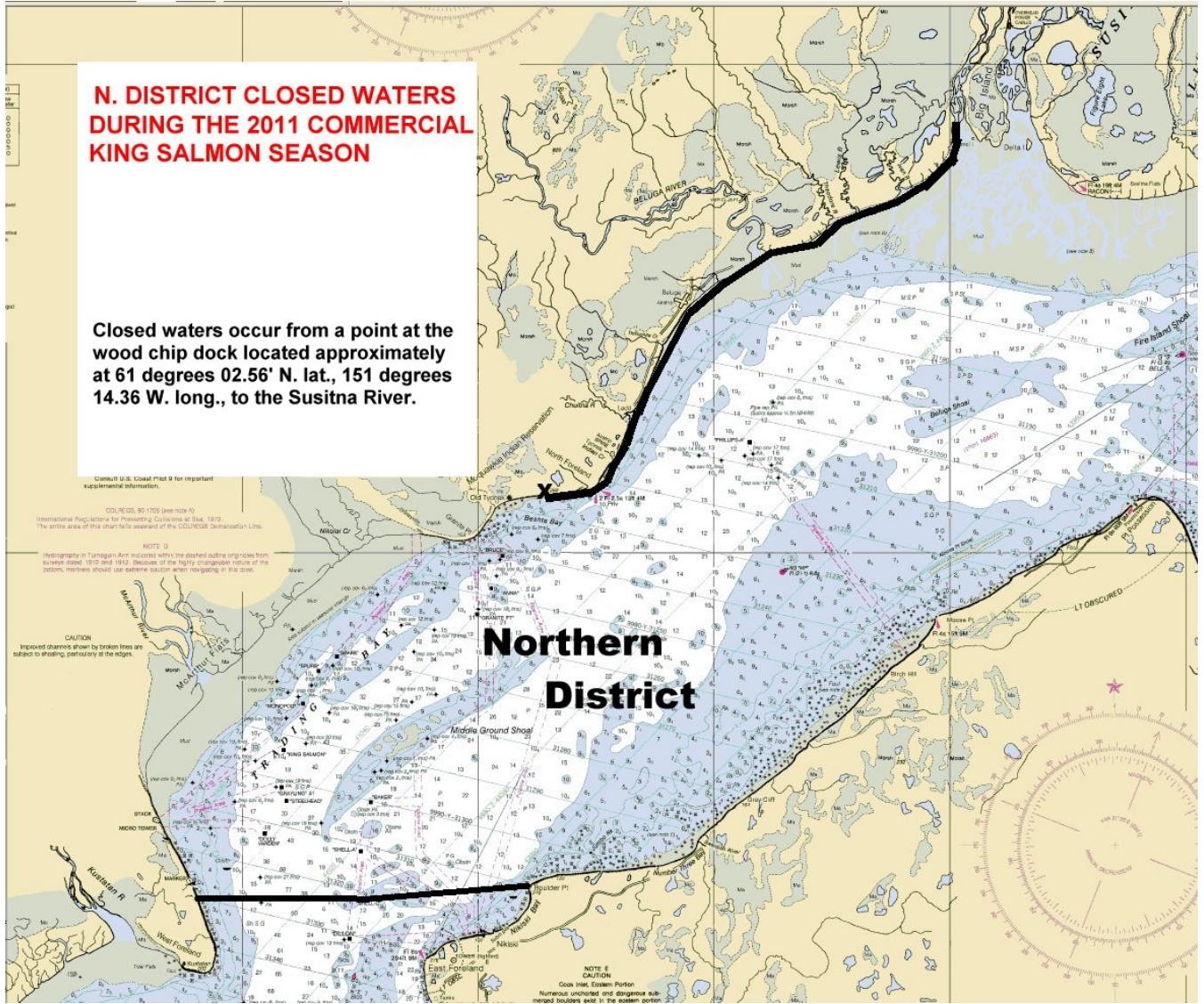
**UPPER COOK INLET COMMERCIAL FISHING ANNOUNCEMENT No. 1
EMERGENCY ORDER NUMBER 2S-01-11**

Upper Cook Inlet Commercial Fishing Announcement No. 1 closes that portion of the General Subdistrict of the Northern District from a point at the wood chip dock located approximately three miles south of Tyonek at 61° 02.56' N. lat., 151° 14.36' W. long., to the Susitna River to commercial king salmon fishing for the 2011 directed king salmon fishery (see page 2 for a map of the closed area). For the 2011 season, the fishing periods closed by this emergency occur on the following Mondays: May 30, June 6, 13, and 20.

At the 2011 Alaska Board of Fisheries meetings for the Upper Cook Inlet area, king salmon originating from the Chuitna River drainage were found to be a stock of management concern. As a result of this finding, the king salmon sport fishery in this drainage was closed for the 2011 season. The *Northern District King Salmon Management Plan* (5 AAC 21.366) specifies that if the Chuitna River is closed to sport fishing, the commissioner shall close the commercial king salmon fishery, by emergency order, from the wood chip dock to the Susitna River. This emergency order implements that mandatory closure.

**N. DISTRICT CLOSED WATERS
DURING THE 2011 COMMERCIAL
KING SALMON SEASON**

Closed waters occur from a point at the
wood chip dock located approximately
at 61 degrees 02.56' N. lat., 151 degrees
14.36 W. long., to the Susitna River.



Consult U.S. Coast Pilot 9 for important supplemental information.

COASTLINE, 80 1705 (see note A)
International Regulations for Preventing Collisions at Sea, 1972
The entire area of this chart falls seaward of the SOUTHERN Separation Line.

NOTE D
Hydrography in Turnagain Arm indicated within the dashed outline originates from surveys dated 1910 and 1912. Because of the highly changeable nature of the bottom, mariners should use extreme caution when navigating in this area.

CAUTION
Improved channels shown by broken lines are subject to shoaling, particularly at the edges.

**Northern
District**

NOTE E
CAUTION
Coast Inlet, Eastern Portion
Numerous uncharted and dangerous submerged dangers exist in the eastern portion.