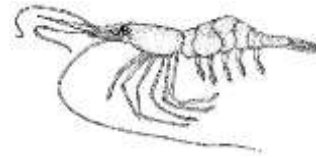

ALASKA DEPARTMENT OF FISH AND GAME

DIVISION OF COMMERCIAL FISHERIES

NEWS RELEASE



Cora Campbell, Commissioner
Jeff Regnart, Director



Contact:
Quinn Smith

Phone: (907) 465-6393
Fax: (907) 465-4944

Douglas Area Office
802 3rd St
Douglas, Alaska 99824
Date: April 25, 2012
Time: 4:00 p.m.

SOUTHEAST ALASKA SHRIMP BEAM TRAWL FISHERIES ANNOUNCEMENT

Douglas. . . The Alaska Department of Fish and Game (ADF&G) announced today that the 2012/2013 shrimp beam trawl fishery will open in Registration Area A, Southeast Alaska, on Tuesday, May 1, 2012. All fishing seasons and periods open at 12:01 a.m. and close at 11:59 p.m., and are described in Tables 1 and 2 below. Guideline harvest ranges (GHRs) for pink and sidestripe shrimp in combination are also defined in Tables 1 and 2.

A beam trawl permit holder must retain, weigh, and report all spot and coonstripe shrimp caught that are less than 60-count per pound. Except in District 11, a combined spot and coonstripe trip bycatch limit of 10 percent of the whole weight of all pink and sidestripe shrimp on board the vessel is in effect. Seasonal bycatch limits along with shrimp GHRs, and fishing periods for traditional and non-traditional fishing areas are summarized in Tables 1 and 2 below. Specific regulatory language may be found under: 5 AAC 31.116 in the 2009-2012 Statewide Commercial Shrimp, Dungeness crab, and Miscellaneous Shellfish Fishing Regulations booklet.

Fish ticket and logbook completion

Logbooks are required in non-traditional areas only [5 AAC 31.111 (a) (3)]. Fishermen must contact Quinn Smith in the Douglas Area office and obtain a logbook before fishing these areas. Logbooks must be completed and attached to the corresponding fish tickets upon landing. **Fishermen are also reminded that they are required by regulation to report on fish tickets at the time of landing any shrimp harvested which are not purchased by the processor or buyer, or which have been discarded at sea [5 AAC 31.075 (a)]. Each buyer shall indicate on the fish ticket the gross weight of shrimp not purchased from a load [5 AAC 31.075 (b)].** In order to more easily track spot and coonstripe bycatch trip limits, fishermen are also asked to submit a copy of their fish ticket from their pink and sidestripe landing when selling spot and coonstripe bycatch to a separate buyer. The spot and coonstripe bycatch buyer shall then attach the copy of the fish ticket from the pink and sidestripe landing to the ADF&G copy of the ticket they complete.

Table 1. Guideline harvest ranges in pounds, fishing periods, and spot and coonstripe bycatch limits in pounds by fishing area for the 2012/2013 beam trawl shrimp fishery in traditional areas of southeastern Alaska. “X”s refer to fishery openings.

GHR by fishing period	Traditional areas ¹			
	District 6 ¹	District 7 ¹	District 8	District 10 ¹
Fishing periods, unless closed by emergency order (EO)	80,000 to 400,000	15,000 to 50,000	25,000 to 250,000	5,000 to 75,000
May 1 - June 30, 2012	X	X	X	X
July 1 - August 31, 2012	X	X	X	X
September 1 - October 31, 2012			X	
September 1, 2012 - February 28, 2013	X	X		X
November 1, 2012 - February 28, 2013			X	
Spot season bycatch limit	1,000	1,000	6,000	1,000
Coonstripe season bycatch limit	9,000	1,000	10,000	3,000

1. see 5 AAC 31.111(2) in the 2009-2012 Statewide Commercial Shrimp, Dungeness crab, and Miscellaneous Shellfish Fishing Regulations booklet for specific descriptions of traditional beam trawl areas in Districts 6, 7, and 10.

Table 2. Guideline harvest ranges in pounds, fishing periods, and spot and coonstripe bycatch limits in pounds by fishing area for the 2012/2013 beam trawl shrimp fishery in non-traditional areas of southeastern Alaska. “X”s refer to fishery openings.

GHR for season	Non-traditional areas ¹							
	District							
	3	5	6 ¹	7 ¹	9	10 ¹	11A,B,C	11D
Fishing period/season, unless closed by EO	---- 25,000 to 100,000 in each district ---- 25,000 to 50,000 to 75,000 ² 150,000							
May 1, 2012 - February 28, 2013	X	X	X	X	X	X	X	X
Spot season bycatch limit	1,000	1,000	1,000	1,000	2,000	2,000	1,000 ³	1,000 ⁴
Coonstripe season bycatch limit	3,000	1,000	1,000	2,000	2,000	7,000	4,000 ³	1,000 ⁴

1. see 5 AAC 31.111(3) in the 2009-2012 Statewide Commercial Shrimp, Dungeness crab, and Miscellaneous Shellfish Fishing Regulations booklet for specific descriptions of non-traditional beam trawl areas in Districts 6, 7, and 10.
2. GHRs per section.
3. allowable bycatch for Sections 11-A and 11-B combined as stated in 5 AAC 31.116(b)(9)(A).
4. allowable bycatch for Sections 11-C and 11-D combined as stated in 5 AAC 31.116(b)(9)(B).

Catcher-processor reporting requirements

A catcher-processor is a commercial fisherman who catches and processes their own product on board [5 AAC 31.143(e)(2)]. A catcher-processor cannot buy or process shrimp from another fishing vessel or tender.

Each week an owner or operator of a shrimp beam trawl catcher-processor vessel operating in the waters of Registration Area A shall contact, by telephone, the ADF&G office in Douglas before 12:00 noon Wednesday during normal business hours of 8:00 a.m. through 5:00 p.m.; the following information must be provided at the time of contact:

- 1) permit holder’s name;
- 2) vessel name and ADF&G number;
- 3) the following information regarding ADF&G fish tickets;
 - a) ADF&G fish ticket number of each fish ticket used since last contact;
 - b) date of landing on each fish ticket;
 - c) district and statistical area on each fish ticket;

- d) total trawling bottom time, for each district and subdistrict for the preceding week;
- e) total pounds of whole shrimp taken by species;
- 4) date of last delivery;
- 5) any other information the commissioner determines is necessary for the conservation and management of the fishery.

Pounds of whole shrimp by species since the last call-in and cumulative pounds of whole shrimp on board since the last delivery should match what is reported on daily fish tickets and entered in required logbooks. The total time as reported in call-in should be the summation for all hauls of the time the trawl was on the bottom, since the last call-in, and should match what is entered in required logbooks. Fish tickets must be submitted to the department within seven days of closure of a district or portion of a district for which a distinct guideline harvest level exists. A shrimp beam trawl catcher-processor vessel that has stopped fishing in a district or portion of a district for which a distinct guideline harvest level exists shall contact, by telephone or in person, the ADF&G area office in Douglas and report the information specified in this paragraph before fishing in a new district or portion of a district with a guideline harvest level established by the department [5 AAC 31.143 (c) (2)]. ADF&G intends to give adequate notice of pending closures but fishermen should be aware that it is their responsibility to stay informed as to when a closure may occur. To keep catch information confidential, ADF&G suggests each catcher-processor contact the Douglas area office to set up a catch-reporting schedule.

Catcher-seller reporting requirements

A catcher-seller means a commercial fisherman who catches and either sells or attempts to sell unprocessed shrimp to a person not licensed to process shrimp [5 AAC 31.143(e)(3)]. The owner or operator of a catcher-seller vessel must complete a fish ticket indicating the weight of the shrimp on board by species before any shrimp are removed from the vessel.

Rockfish possession and landing requirements for the Eastern Gulf of Alaska Area

All fishermen participating in the beam trawl fishery for shrimp in Southeast Alaska must retain, weigh and report all demersal shelf rockfish (DSR) by species on the fish ticket [5 AAC 28.171 (b)]. Beam trawl permit holders are allowed a combined DSR bycatch of 1% of the directed shrimp catch. DSR species include canary, China, copper, quillback, rosethorn, tiger, and yelloweye rockfish. The bycatch percentage is calculated based on the round weight of rockfish divided by the whole weight of shrimp. This bycatch of rockfish must be weighed and reported on an ADF&G fish ticket. Bycatch in excess of allowable limits shall be reported by species as an overage on an ADF&G fish ticket. Proceeds (if any) from the sale of excess rockfish bycatch shall be surrendered to the state.

Dual Registration with Dungeness Fishery

The Alaska Board of Fisheries adopted dual fishery registration restrictions for the Southeast Alaska beam trawl and Dungeness crab fisheries in January 2012 [5 AAC 31.128]. A vessel may not be registered for the commercial beam trawl shrimp fishery and the commercial Dungeness crab fishery at the same time. However, a vessel owner, or the owner's agent, may cancel a vessel's registration for the commercial beam trawl shrimp fishery and register a vessel for the commercial Dungeness crab fishery by contacting a local ADF&G representative, in person, and providing all requested information. This regulatory change has not taken effect as of the date of this news release. ADF&G will issue a subsequent news release providing notification of the effective date of this regulatory change.

Other information

Fishermen are also reminded to review pertinent regulations on pages 81 through 102 of the 2009-2012 Statewide Commercial Shrimp, Dungeness crab, and Miscellaneous Shellfish Fishing Regulations booklet, and pages 25 and 26 of the 2011-2012 Statewide Commercial Groundfish Fishing Regulations

booklet. Questions concerning the shrimp beam trawl fishery may be referred to Quinn Smith in the Douglas office (907-465-6393).

News releases web site: <http://www.adfg.alaska.gov/index.cfm?adfg=cfnews.main>.

<i>Office</i>	<i>Ketchikan</i>	<i>Petersburg</i>	<i>Wrangell</i>	<i>Sitka</i>	<i>Juneau</i>	<i>Haines</i>	<i>Hoonah</i>	<i>Yakutat</i>
<i>ADFG</i>	225-5195	772-3801	874-3822	747-6688	465-4250	766-2830		784-3255
<i>AWT</i>	225-5111	772-3983	874-3215	747-3254	465-4000		945-3620	
<i>Shrimp Hotline</i>	225-6870	772-3700			465-8905			