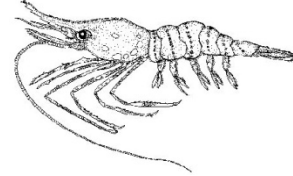


# ALASKA DEPARTMENT OF FISH AND GAME DIVISION OF COMMERCIAL FISHERIES

## NEWS RELEASE



*Cora Campbell, Commissioner*  
*Jeff Regnart, Director*



Contact:  
Maria Wessel, Shellfish Management Biologist

Cordova Area Office  
P.O. Box 669  
Cordova, Alaska 99574

Phone: (907) 424-3212  
Fax: (907) 424-3235

Date Issued: 4/6/12

### **FISHERY ANNOUNCEMENT PRINCE WILLIAM SOUND COMMERCIAL SHRIMP POT FISHERY SEASON AND VESSEL POT LIMITS EMERGENCY ORDER 2-SF-E-01-12**

#### **SEASON, AREA, AND GEAR**

Registration for the Prince William Sound (PWS) Area E commercial shrimp pot fishery closed at 5:00 p.m. April 2 with 81 vessels registered to harvest the 51,240 lb guideline harvest level (GHL). A PWS commercial shrimp pot fishing period will open at 8:00 am April 15 and close at 8:00 p.m. April 29. The maximum number of shrimp pots that may be operated from a vessel is 50. Fishing hours during this initial period are set by emergency order at 8:00 a.m. to 8:00 p.m. The announcement of future fishing periods will be dependent upon prompt catch reporting and harvest levels.

Inside District waters south of a line at 60° 25.00' N. lat. and west of a line extending northward from Middle Point at 60° 20.00' N. lat. 147° 00.00' W. long., as described in 5 AAC 31.210(a)(3), are open to commercial shrimp fishing. Waters closed to commercial shrimping with pot gear are described in regulation 5 AAC 31.235(a)(3) and these areas are depicted on the map that accompanied the vessel registration.

Shrimp pot gear may only be deployed and retrieved between the hours of 8:00 a.m. and 8:00 p.m. during open fishing periods and may not be stored in the water or deployed prior to the opening of the season. A vessel operator may not have more than the legal limit of pot gear on board the vessel or in the water at any time. Shrimp pots deployed on a longline with five or more pots, must have a buoy attached to each end of the longline (5AAC 31.226). After the fishing period or season closure shrimp pots may be stored in saltwater only if all bait and bait

-continued-

containers have been removed and all doors secured fully open and for no more than 14 days (5AAC 31.052). **All shrimp pots must have a biodegradable escape mechanism as described in 5 AAC 39.145.**

### **NEW MANAGEMENT STRATEGIES**

The department will be managing the fishery inseason to restrict harvest to no more than 25 percent of the GHL from any one statistical area. Inseason measures may include adjusting pot limits, time, and/or area in order to achieve the 25 percent statistical area harvest target. Fishery announcements regarding adjustments will be available on the harvest reporting message line at (907) 424-7215.

### **REPORTING AND LANDING REQUIREMENTS**

Fishermen are reminded of the inseason **reporting and landing requirements** specified on the registration form and in regulation 5 AAC 31.245. Use the shrimp harvest report form supplied in the registration packet to ensure a complete report. A vessel operator intending to land shrimp outside of registration area must contact the department (907-424-3212) prior to departing Registration Area E and specify the amount by weight of shrimp on board the vessel. A vessel registered for the fishery may not have shrimp on board the vessel after 72 hours following the closure of the fishing period or season (5 AAC 31.031).

A vessel used to tender shrimp must obtain a registration from the department prior to operating in the fishery. Tenders may not have shrimp gear aboard or be used to fish for shrimp (5 AAC 31.033).

Other regulations pertinent to the fishery are listed in Chapters 31 and 39 of the **2009-2012 Statewide Commercial Shrimp, Dungeness Crab, and Miscellaneous Shellfish Fishing Regulations** booklet available at department offices in Anchorage, Cordova, and Homer or at <http://www.adfg.alaska.gov/index.cfm?adfg=fishregulations.commercial>.

-end-