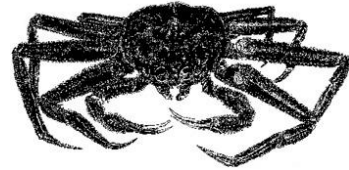


**ALASKA DEPARTMENT OF FISH AND GAME  
DIVISION OF COMMERCIAL FISHERIES  
NEWS RELEASE**



*Cora Campbell, Commissioner  
Jeff Regnart, Director*



---

Contact:  
Heather Fitch  
BSAI Area Management Biologist  
Phone: (907) 581-1239  
Fax: (907) 581-1572

Dutch Harbor Office  
P.O. Box 920587  
Dutch Harbor, AK 99692  
Date Issued: 03/16/2012

**BERING SEA SNOW CRAB PARTIAL OPENING OF STATISTICAL AREA 705630**

**EMERGENCY ORDER NO. 4-S-18-12**

On Sunday, March 18, 2012 at 12:01 PM, the Alaska Department of Fish and Game (ADF&G) will open, for the taking of snow crab, waters southwest of St. Paul Island in a portion of ADF&G statistical area 705630 that are currently closed. The open portion of statistical area 705630 is delineated by connecting the coordinates below in the order listed by straight lines and connecting the last point to the first point with a horizontal line:

170° W longitude, 56° 30' N latitude  
171° W longitude, 57° 00' N latitude  
171° W longitude, 56° 30' N latitude

The remaining portion of ADF&G statistical area 705630, as well the entirety of ADF&G statistical areas 675730, 687530, 695730, 685700, 695700, 705701, 705703, 695701, 695631, and 695632, will remain closed to the taking of snow crab.

Due to ice covering the majority of snow crab fishing grounds, ADF&G reexamined the area closed to the taking of snow crab and determined that opening the specified portion of ADF&G statistical area 705630 would have no impact on the Pribilof blue king crab stock.

For further information contact the Alaska Dept. of Fish & Game in Dutch Harbor at (907) 581-1239 or in Kodiak at (907) 486-1840.

-end-