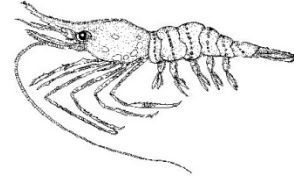


**ALASKA DEPARTMENT OF FISH AND GAME  
DIVISION OF COMMERCIAL FISHERIES  
NEWS RELEASE**



*Cora Campbell, Commissioner  
Jeff Regnart, Director*



Contact:  
Ken Goldman, Ph.D.  
Central Region Groundfish/Shellfish Research  
Biologist  
Phone: (907) 235-8191  
Fax: (907) 235-2448

Homer Office  
3298 Douglas Place  
Homer, AK. 99603

Date Issued: February 17, 2012

**SUMMARY OF PRINCE WILLIAM SOUND SPOT SHRIMP DATA**

The Alaska Department of Fish and Game conducts an annual longline pot survey on spot shrimp in Prince William Sound (PWS). This document provides the most current summary of our spot shrimp survey data.

The figures below indicate the locations where the survey takes place (Figure 1), the average number of spot shrimp per pot (Figure 2) and average weight of shrimp per pot (Figure 3) from 1992 to present. Data are presented for all spot shrimp caught in the survey as well as for those with a carapace length of 32 mm and greater, which is the portion of the population that is typically harvested and for which harvest limits are set. Please contact Dr. Ken Goldman (235-1741) for research questions and Maria Wessel (424-3212) for management questions.

**-end-**

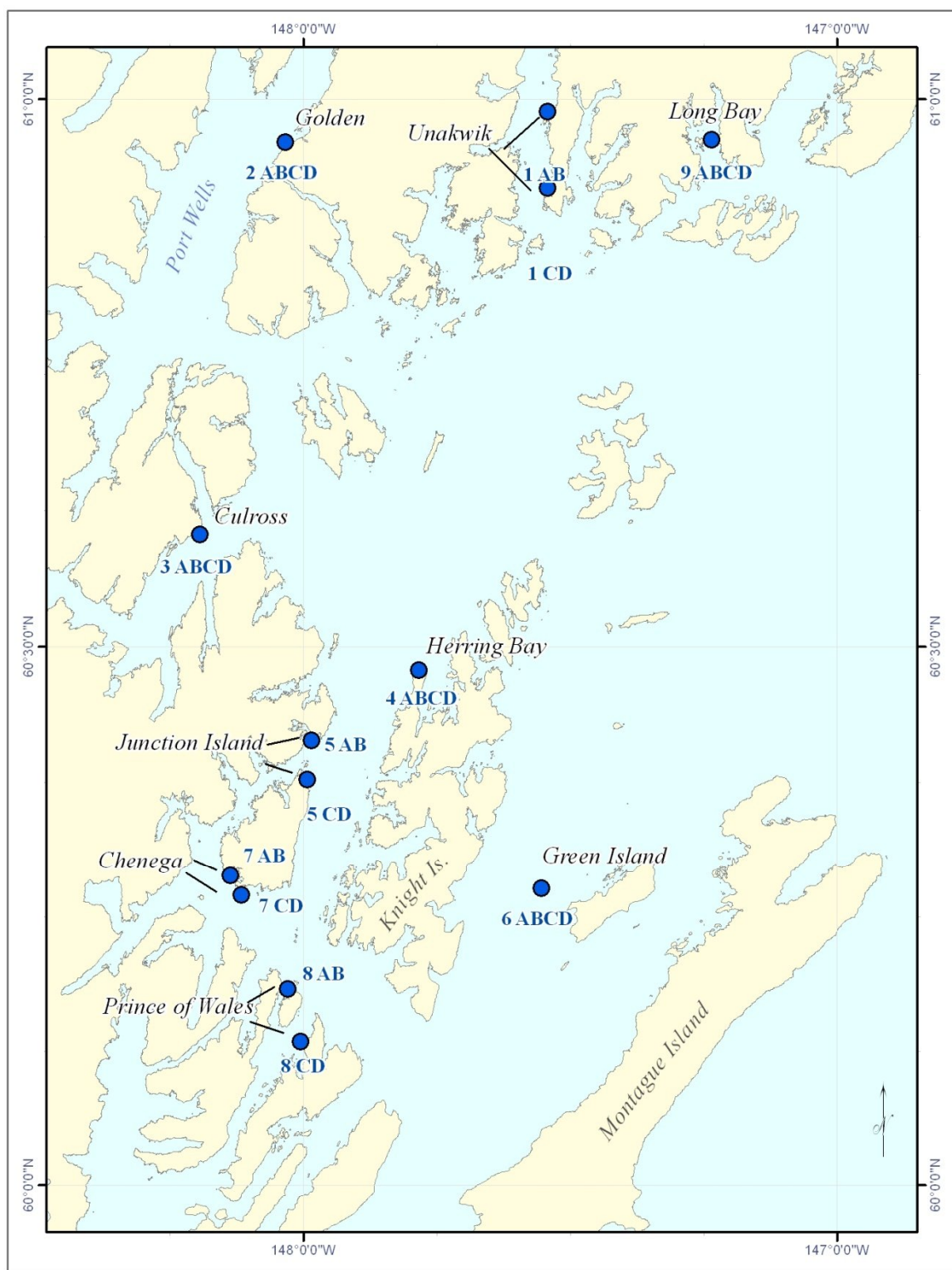


Figure 1: Map of spot shrimp survey sites in western Prince William Sound.

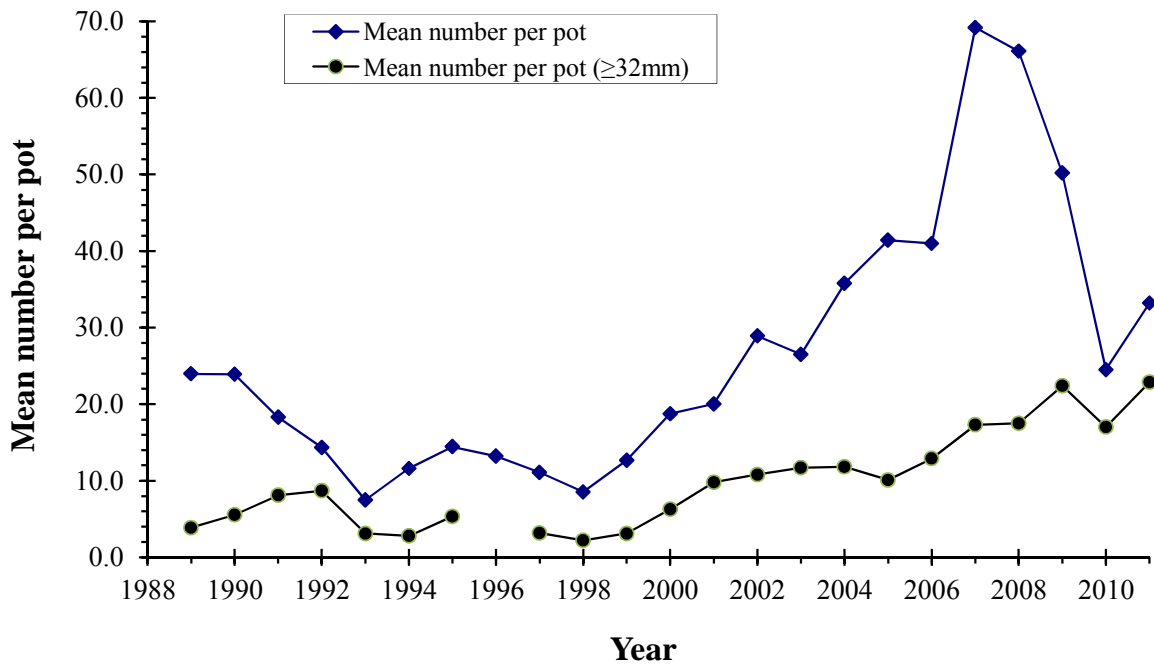


Figure 2: Mean (average) number of spot shrimp per pot and mean number of commercially marketable shrimp per pot (those equal to or greater than 32 mm in carapace length).  
*Note:* Data for spot shrimp 32mm and greater not available for 1996.

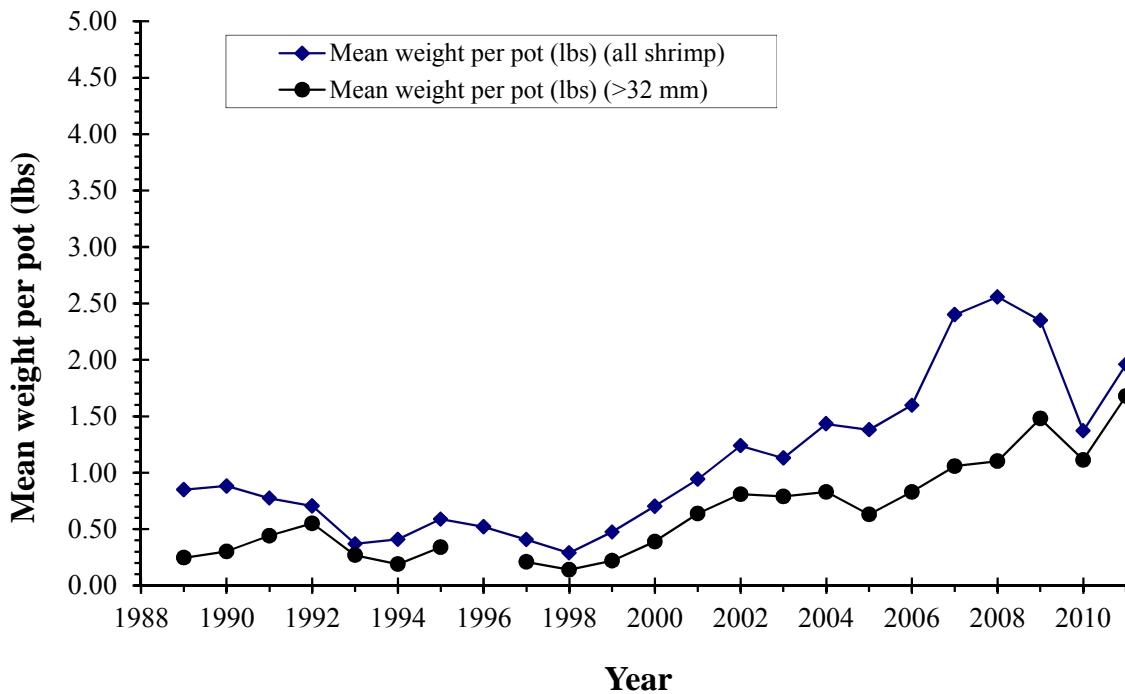


Figure 3: Mean (average) weight of spot shrimp per pot and mean weight of commercially marketable shrimp per pot (those equal to or greater than 32 mm in carapace length).  
*Note:* Data for spot shrimp 32mm and greater not available for 1996.