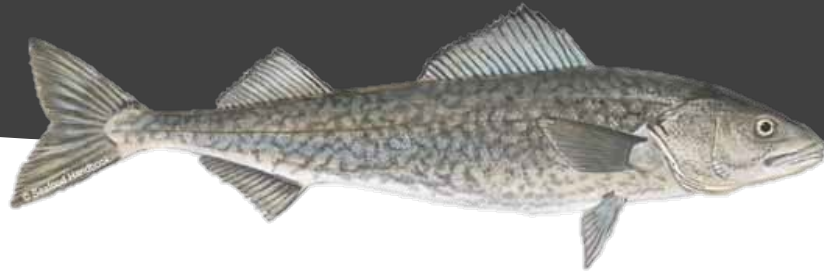


2022 Sablefish Industry Meeting



Welcome!



NOAA
FISHERIES

Sablefish Industry Meeting
April 29, 2022

Introduction



ADF&G Staff:

Rhea Ehresmann

Phil Joy

Andrew Olson

NOAA Staff:

Dan Goethel

Kevin Siwicke

Katy Echave

Jane Sullivan



NOAA
FISHERIES

Agenda



NSEI Chatham Strait (Phil Joy and Rhea Ehresmann, ADF&G)

Fishery & survey data review

Outlook for 2022

SSEI Clarence Strait (Rhea Ehresmann, ADF&G)

Fishery & survey data review

Outlook for 2022

2022 BOF Updates (Rhea Ehresmann/Andrew Olson, ADF&G)

GOA Federal Sablefish Assessment (Dan Goethel/Chris Lunsford, NOAA)

Other Federal Project Updates (Kevin Siwicke, Katy Echave, Jane Sullivan, NOAA)



NSEI sablefish data review and outlook for 2022



Sablefish Industry Meeting

April 29, 2022

Phil Joy

Rhea Ehresmann

Andrew Olson

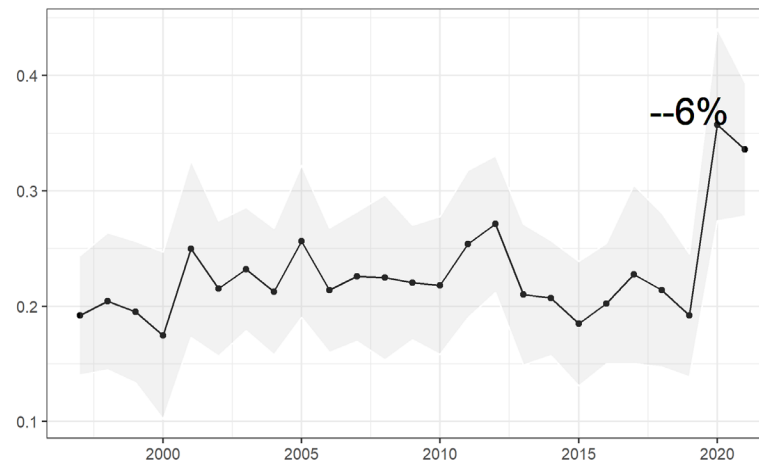
Key points

- Lots of young, small fish entering the population
- CPUE up but value low
- Exploitable biomass increasing but still comprised of mostly smaller, less valuable fish



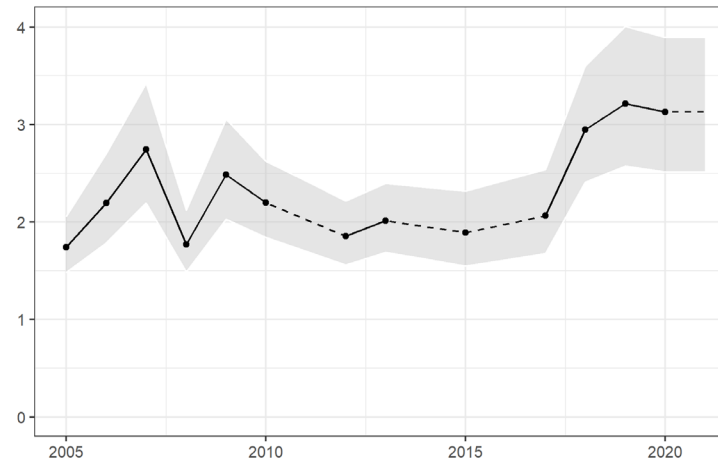
Abundance trends

Longline survey CPUE (#/hook)



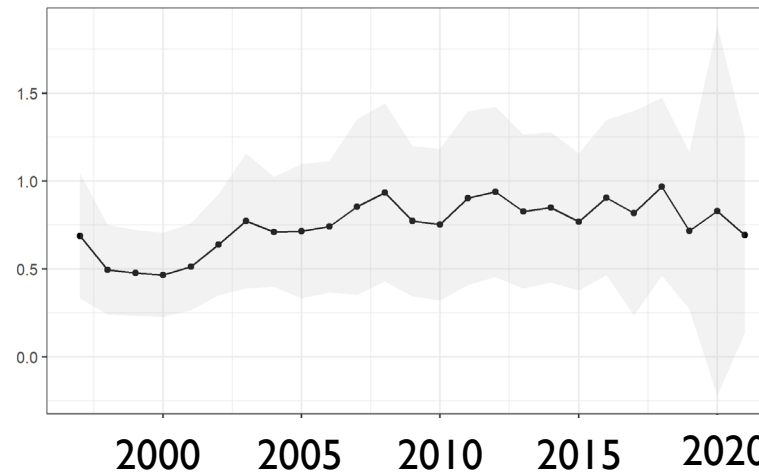
- Slight drop from last year, but still second highest on record

Mark-recapture exploitable abundance (Millions)



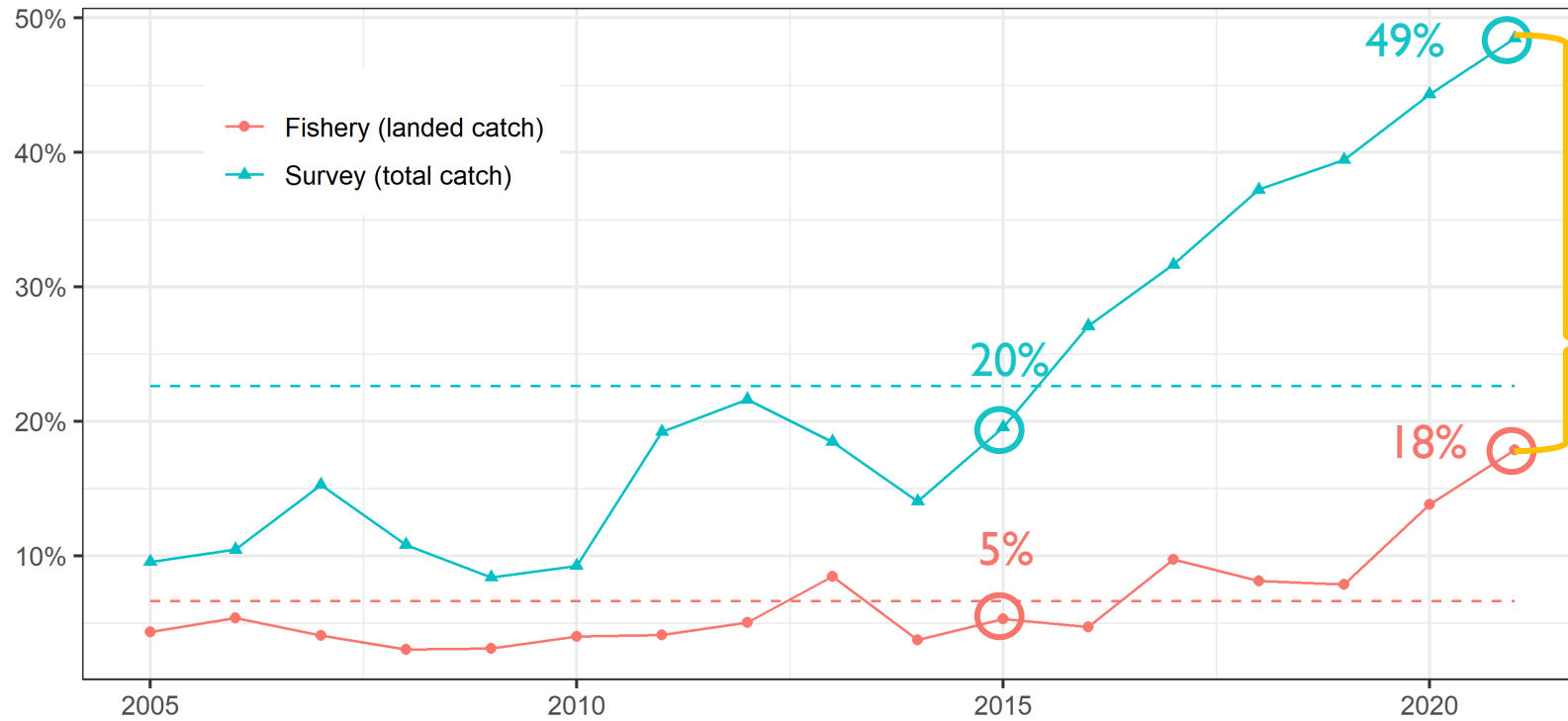
- No mark-recapture in 2021

Fishery CPUE (lb/hook)



- Logbook application and data re-entry project completed
- Long term trend steady
- A lot of variability in rates

Percent of sablefish ≤ 3 dressed lb

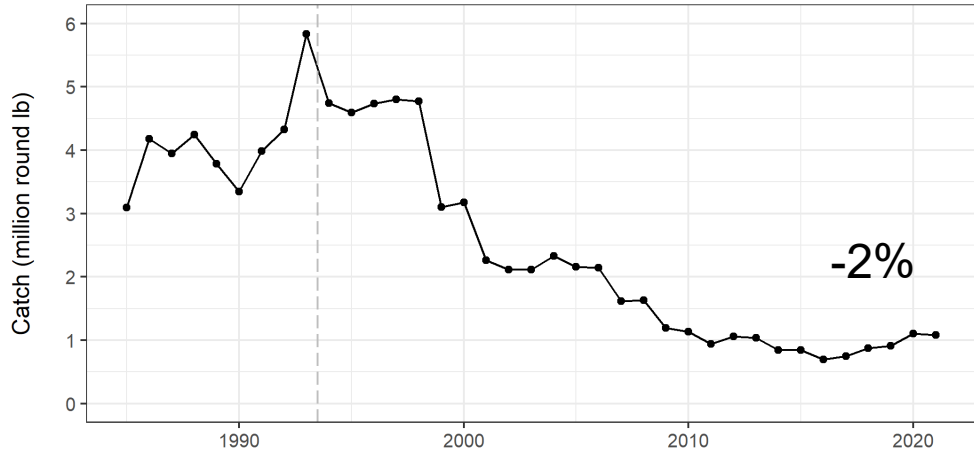


Continued increase in prevalence of smaller grade fish in both survey and fishery

RELEASES of small fish in fishery

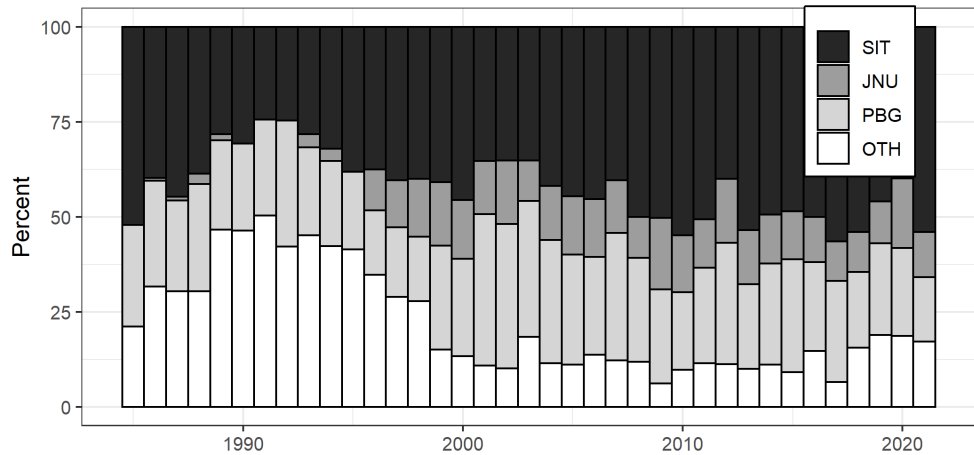
2021 NSEI fishery

Catch (million lb)



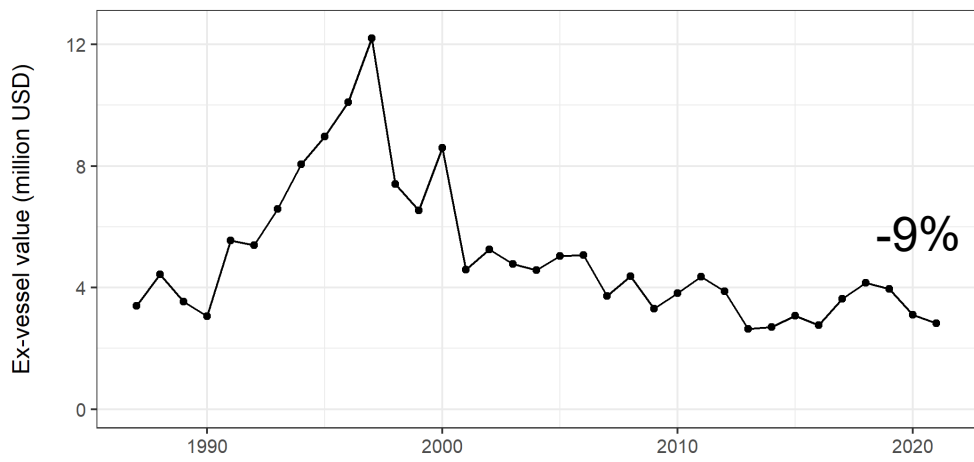
Steady catches but depressed prices

Percent by port



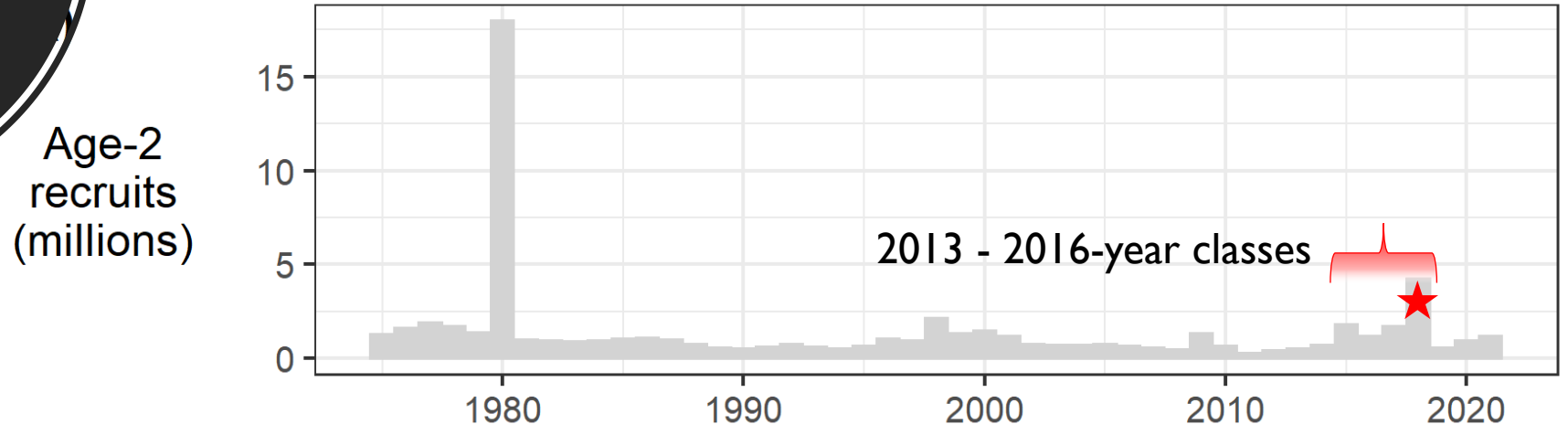
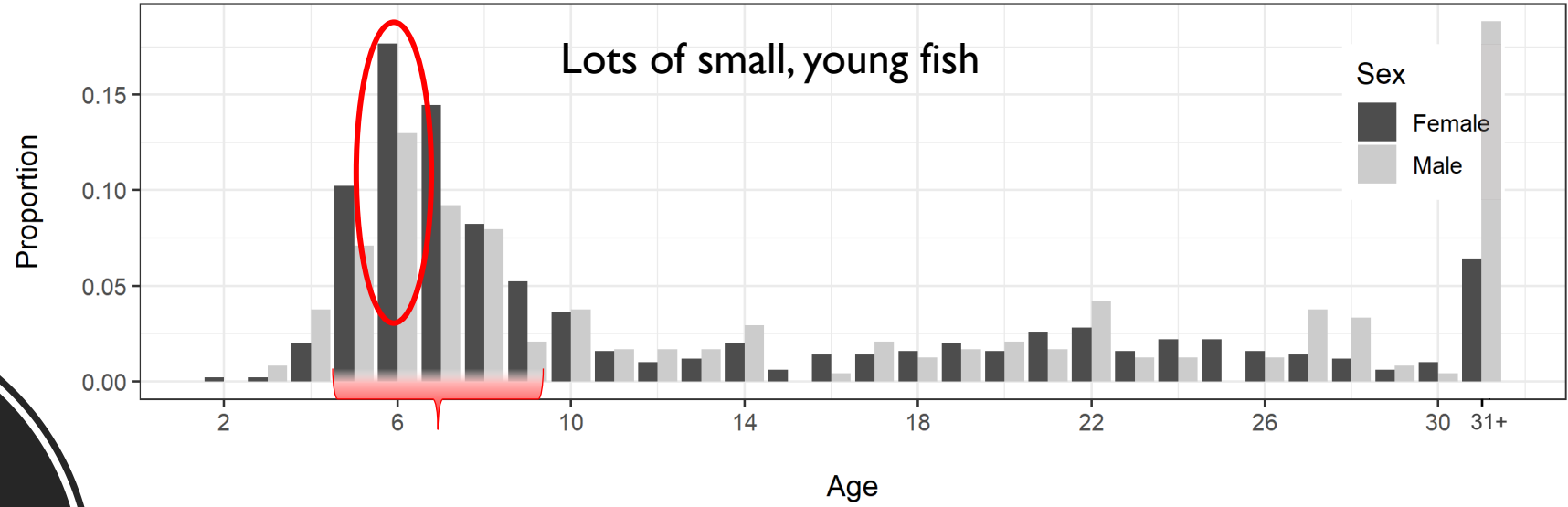
Shift back towards Sitka

Ex-vessel value (million USD)

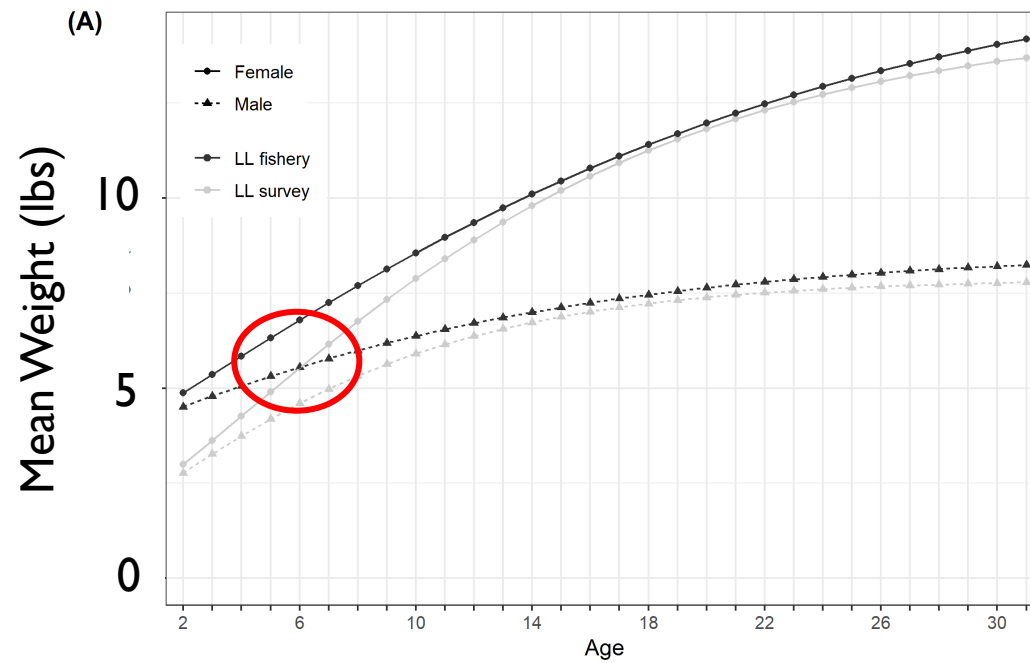


-9%

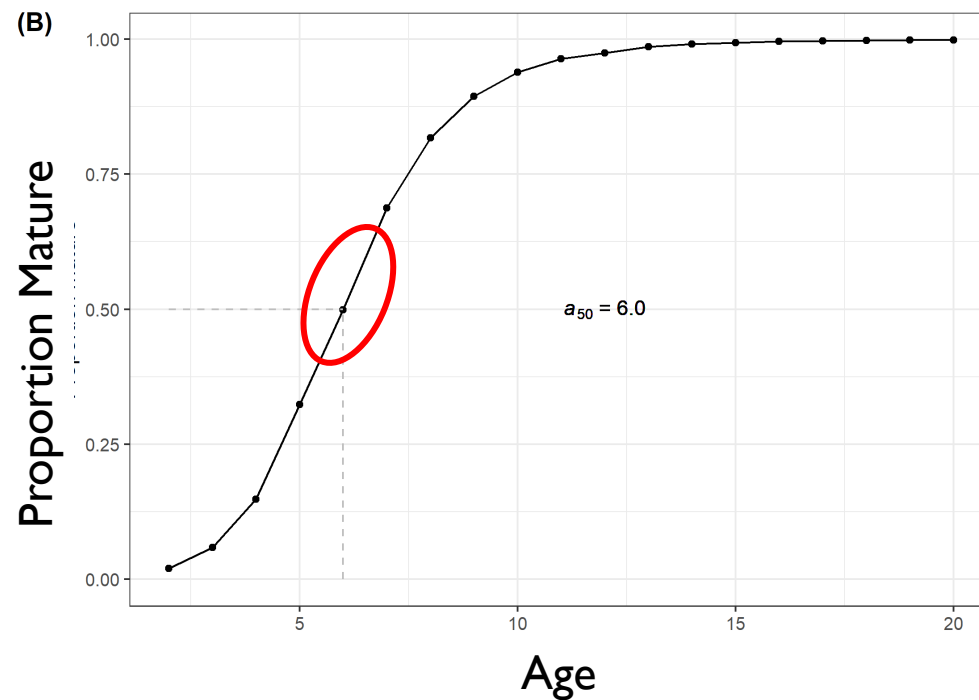
Ages and sizes



Ages and sizes

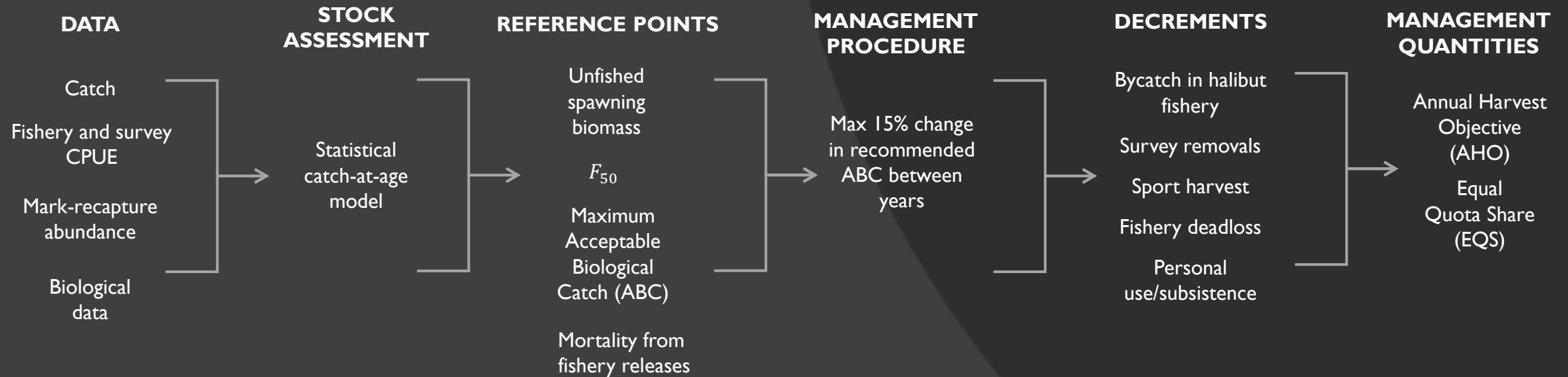


Younger fish with lots of room to grow

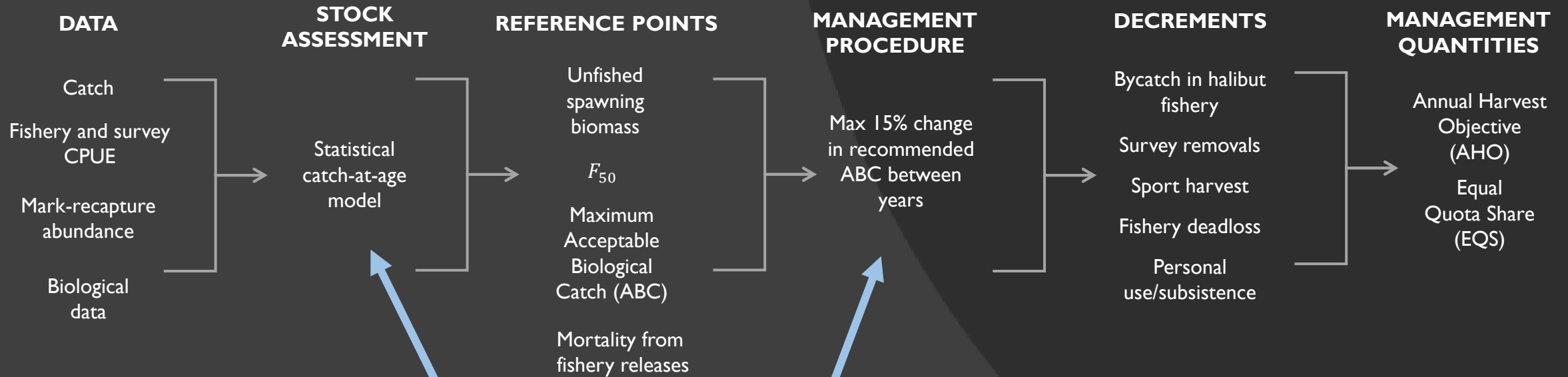


- Younger fish not totally mature;
- Will contribute more to spawning output as they mature in coming years...

Assessment and management steps

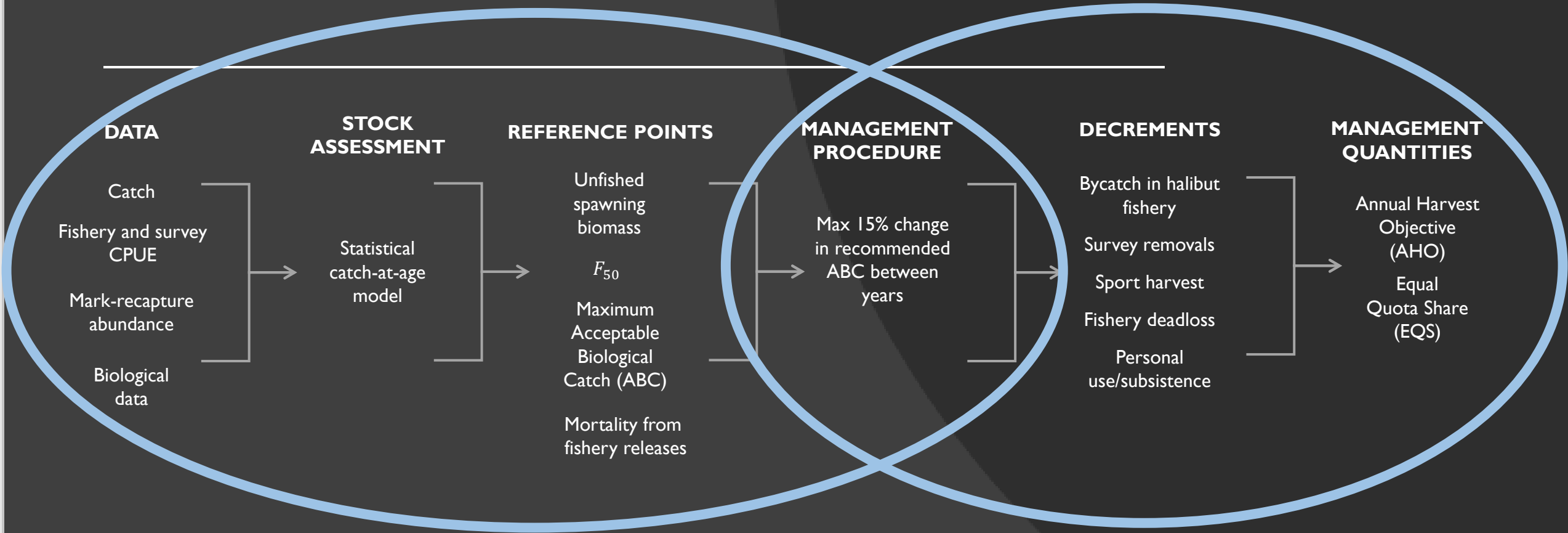


Assessment and management steps

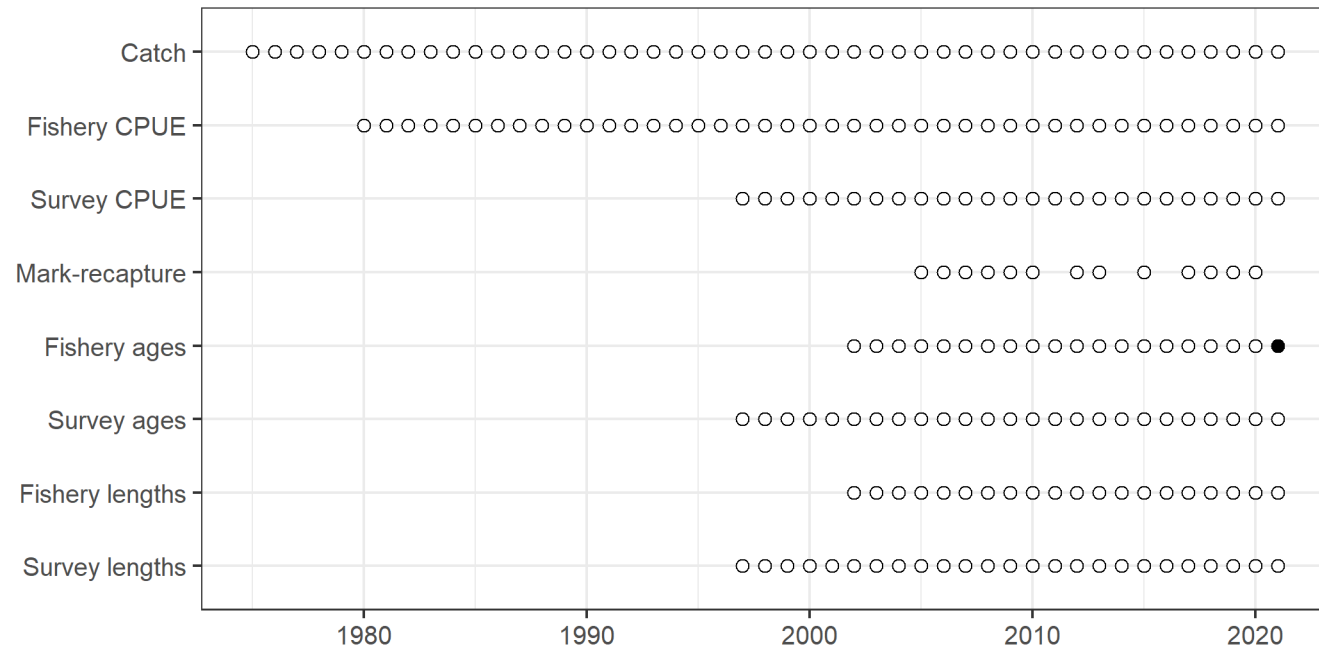


New in 2020

Assessment and management steps



Stock assessment update

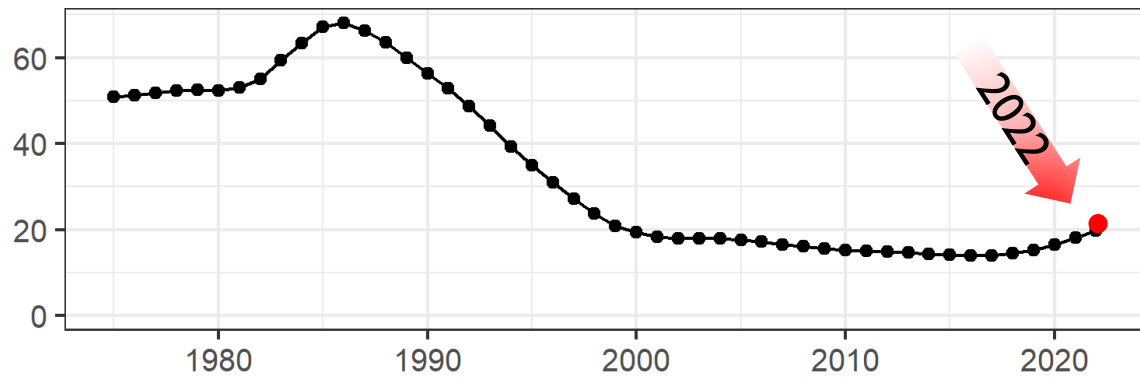


- New model presented in 2019, implemented in 2020
- Model developments: new biometrician
- Primary sources of uncertainty: recruitment, fishery dynamics (total vs. retained catch)
- Outlook for 2022...

Biomass and abundance outlook...

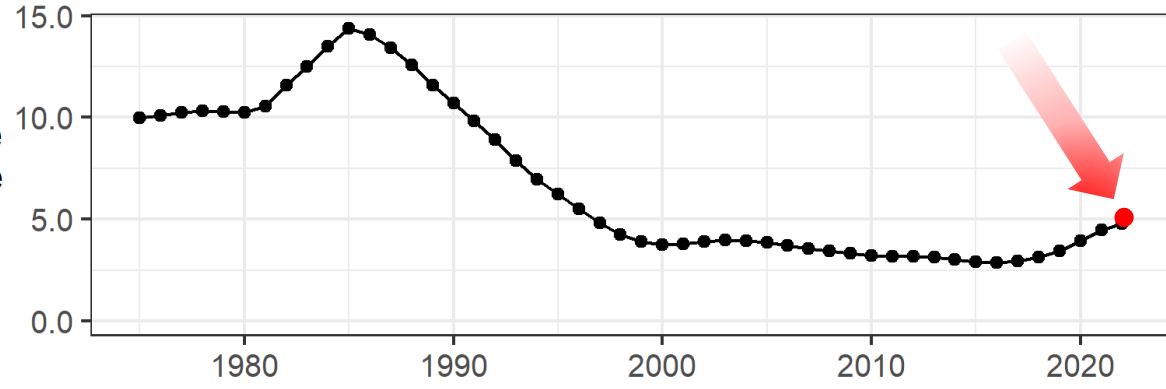
(B)

Spawning biomass (million lb)



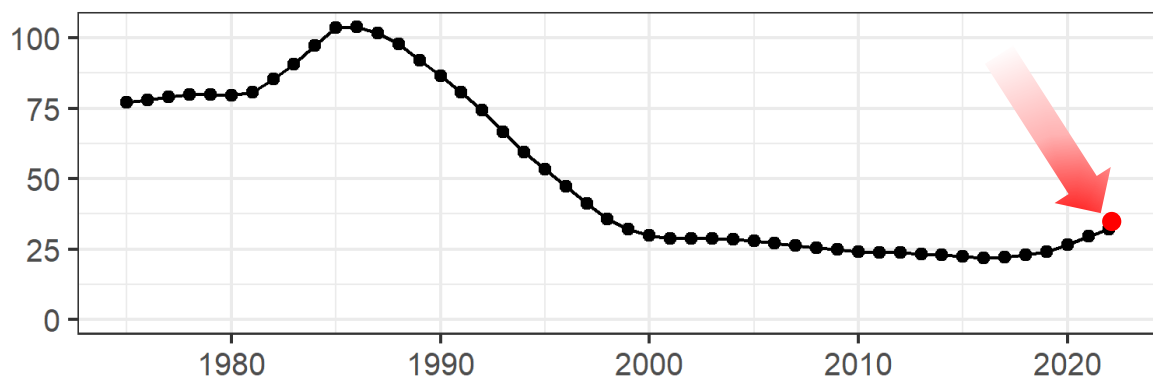
(C)

Exploitable abundance (millions)



(D)

Exploitable biomass (million lb)



As younger fish recruited to population, we are seeing increase in abundance and biomass

Good sign for coming years if we don't overdo things...



Decrements

1. Bycatch mortality in the IFQ halibut fishery
2. ADF&G longline survey removals
3. Recreational harvest (guided & unguided)
4. Subsistence and personal use harvest
5. Deadloss discard mortality (i.e. sandfleas, sharks, whales, etc.) in directed NSEI commercial fishery


Sablefish Decrements

2019-2022

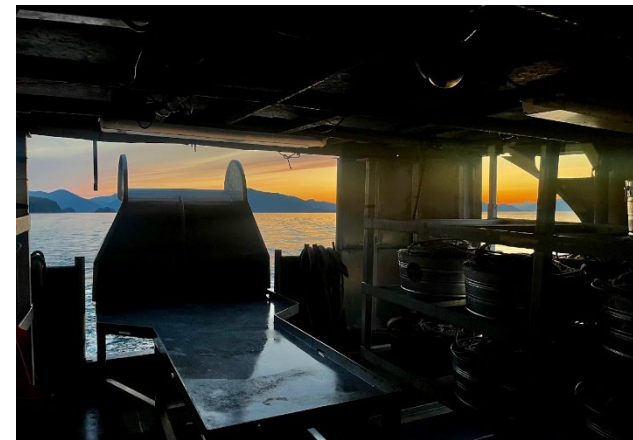


Year	2019	2020	2021	2022
ABC (lbs)	1,058,037	1,216,743	1,255,056	
Decrements				
1) Bycatch mortality in halibut fishery	18,434	16,207	38,124	
2) ADF&G longline survey removals (excluding catch retained by permit holders)	26,260	24,698	42,499	
3) Guided sport harvest	33,135	35,004	753	33,990
Unguided sport harvest	11,340	5,280	5,631	9,846
4) Subsistence and personal use	21,587	17,821	19,295	23,852
5) Deadloss discard mortality in sablefish fishery	8,046	9,729	10,888	
Small discard mortality in sablefish fishery	19,142	---	---	---
Total Decrements	137,943	108,740	117,189	
AHO	920,094	1,108,003	1,137,867	
# of Permit Holders	78	75	73	73
EQS	11,796	14,773	15,587	

2022 Annual Harvest Objective Outlook

- Expect an increase 
- Finalizing assessment and ABC, AHO, and EQS values
- Announcement and report out in late May/early June





ADF&G Longline Survey Vessel Bid

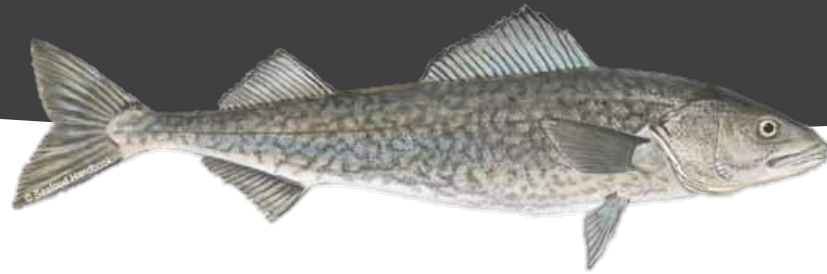
Need 3 vessels for NSEI Chatham Strait Sablefish
Longline Survey

Survey takes place approximately August 3–9th
One year contract

Bid will be released in early June

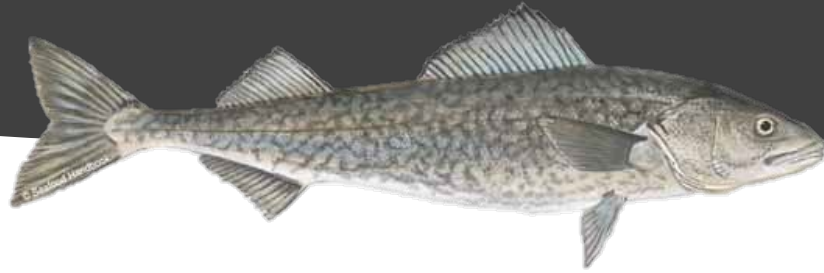
Contact Rhea for more information!
907-747-6688 or rhea.ehresmann@alaska.gov

Question and Answer



Please ask your questions or type them in the chat for discussion.

SSEI Sablefish fishery and survey data review

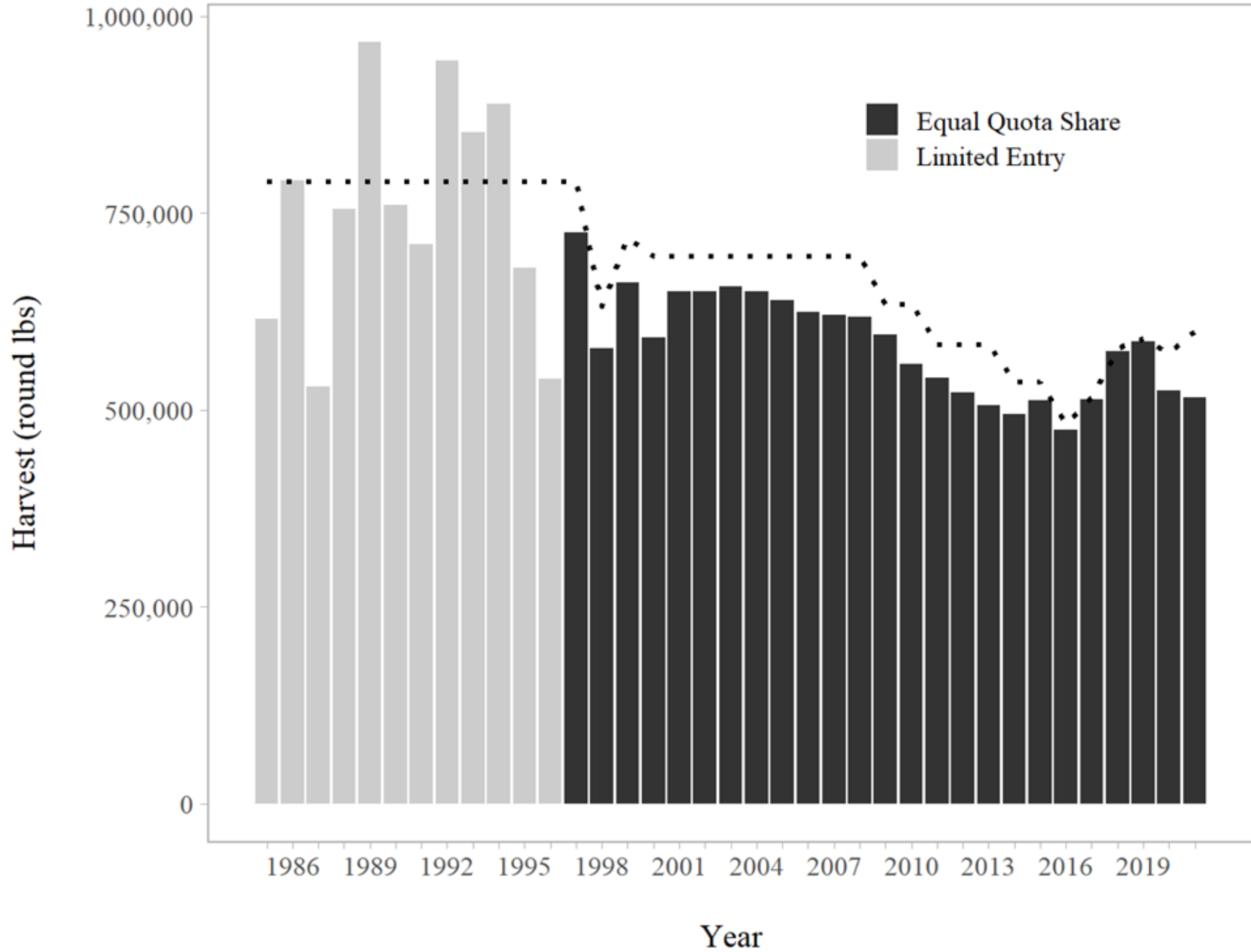


Sablefish Industry Meeting
April 29, 2022

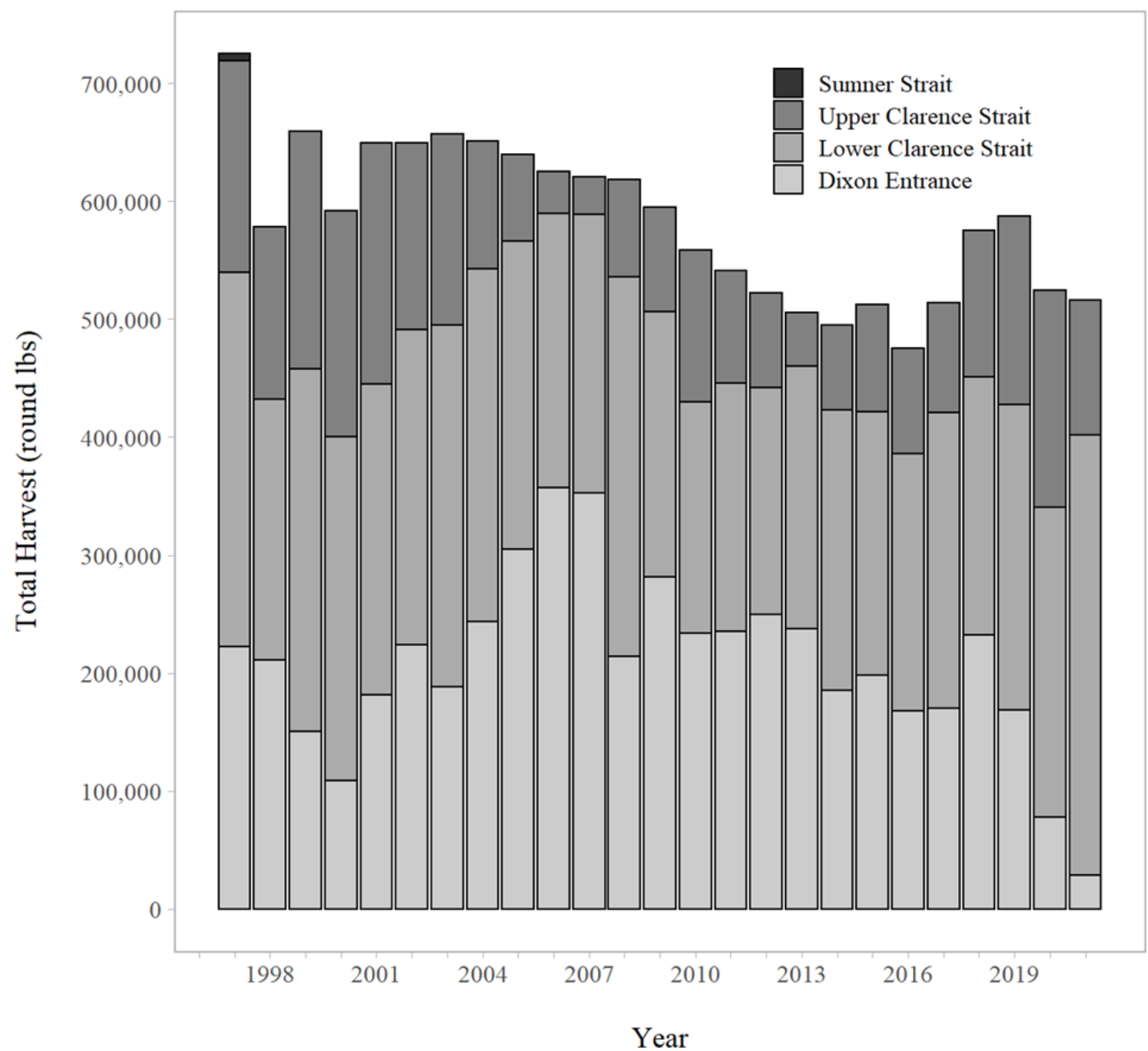
Rhea Ehresmann

rhea.ehresmann@alaska.gov

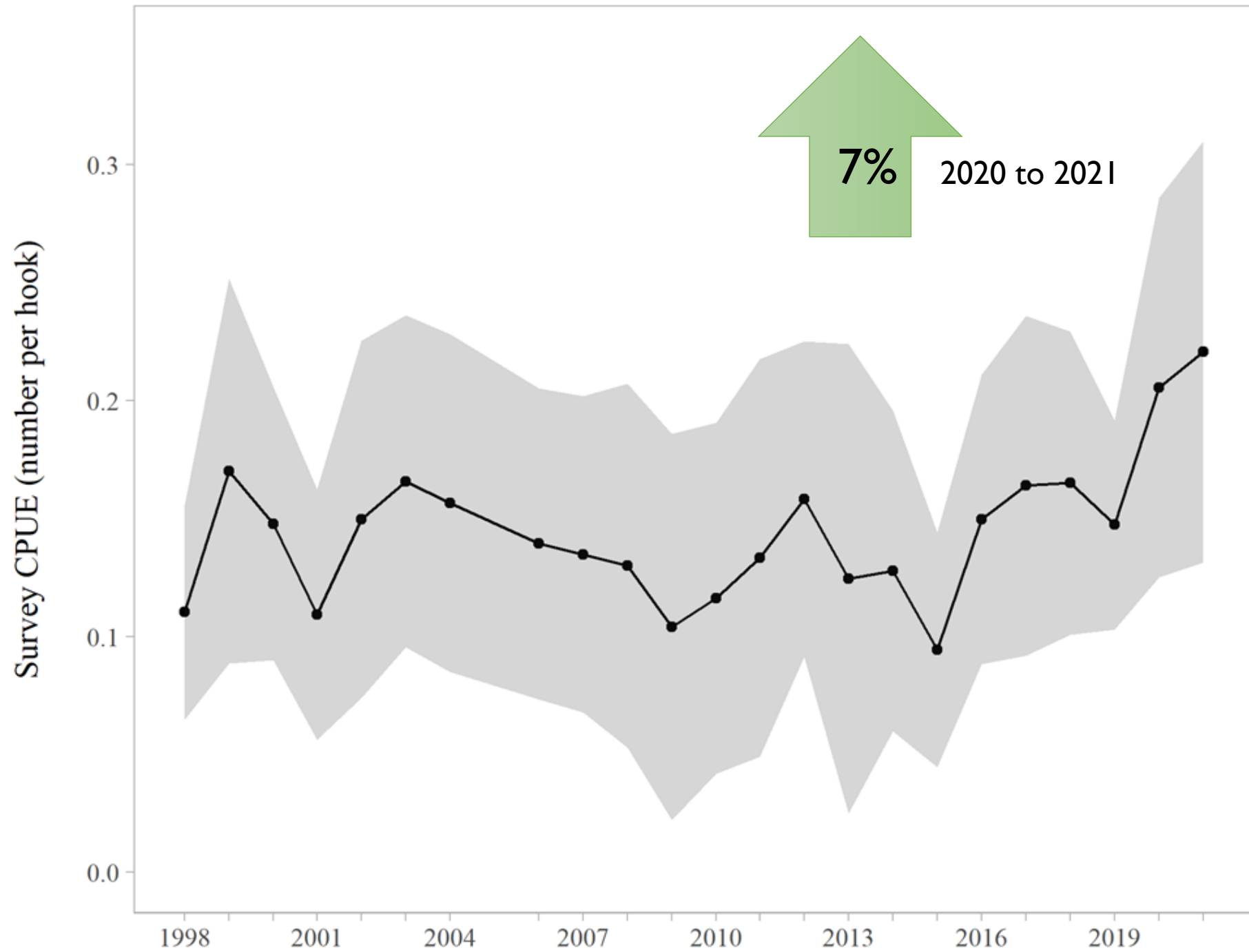
Fishery Harvest



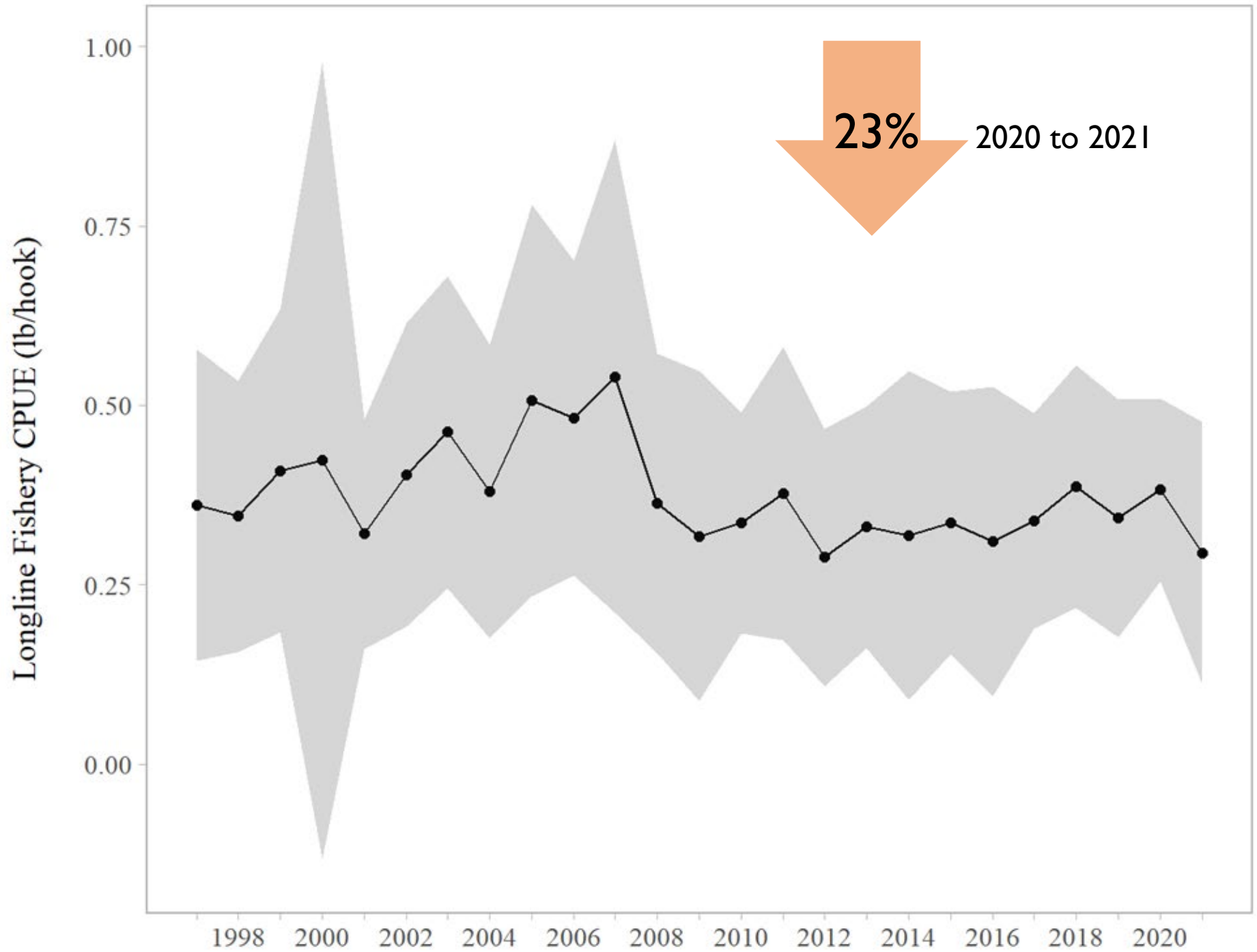
Fishery Distribution



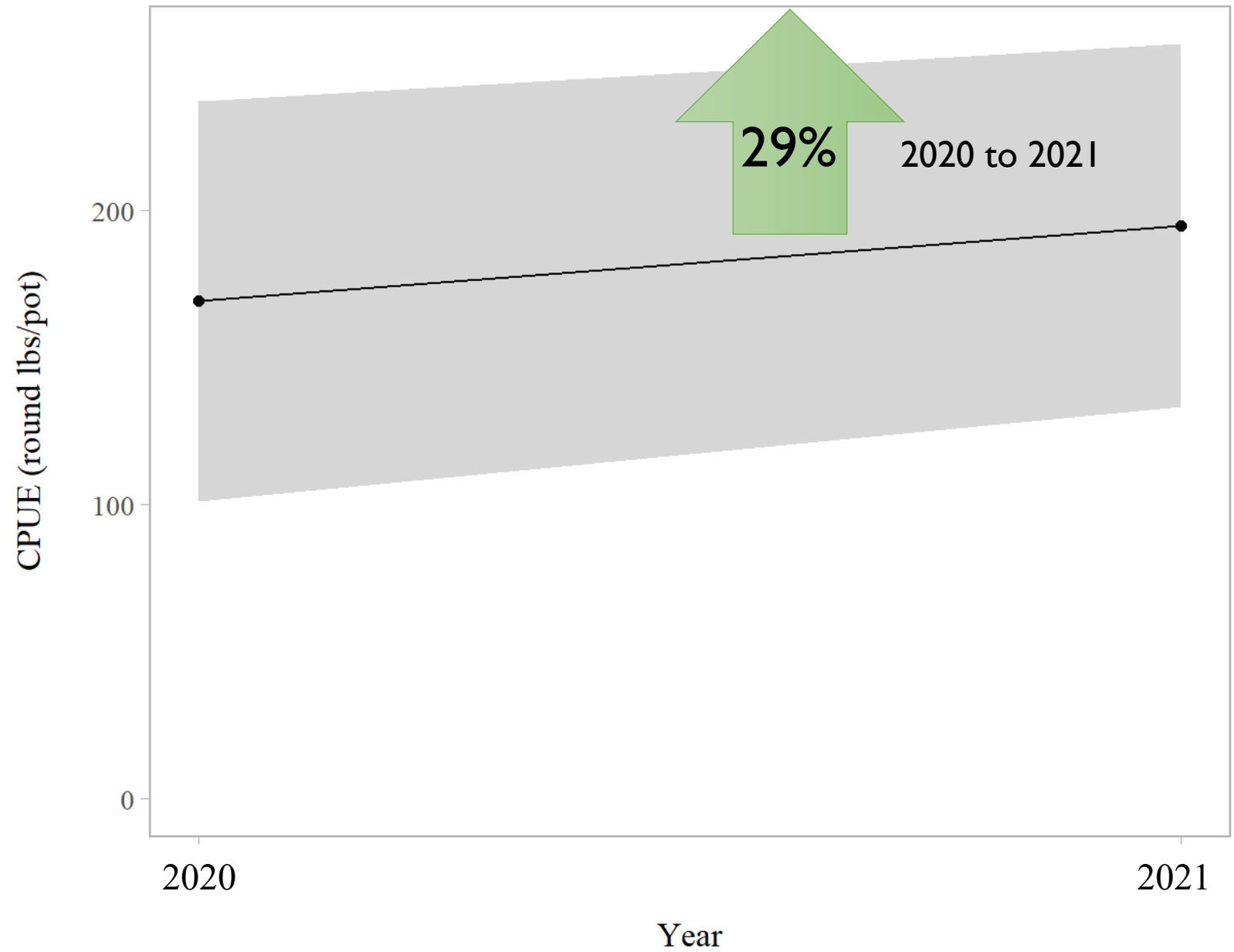
Survey Performance



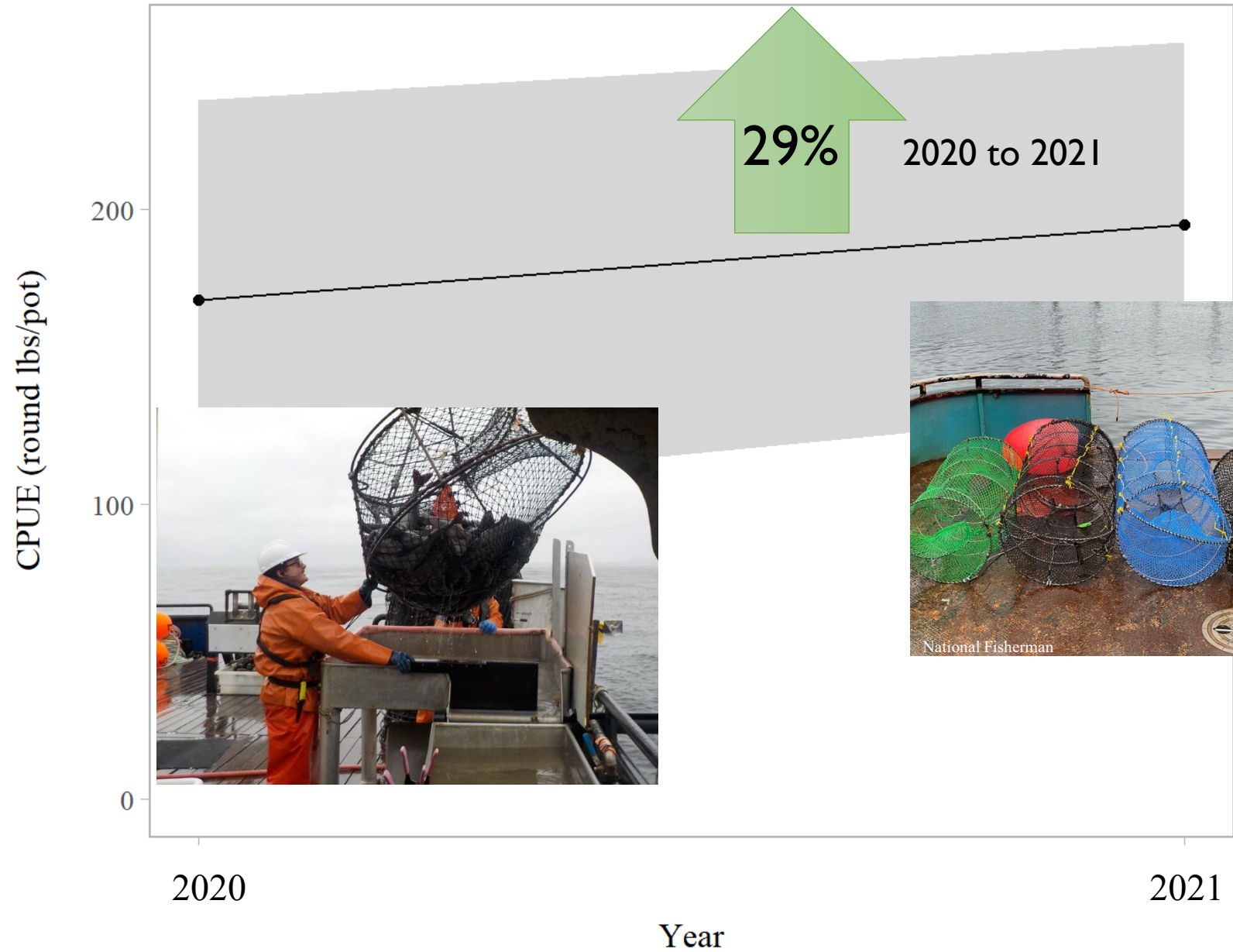
Longline Fishery Performance



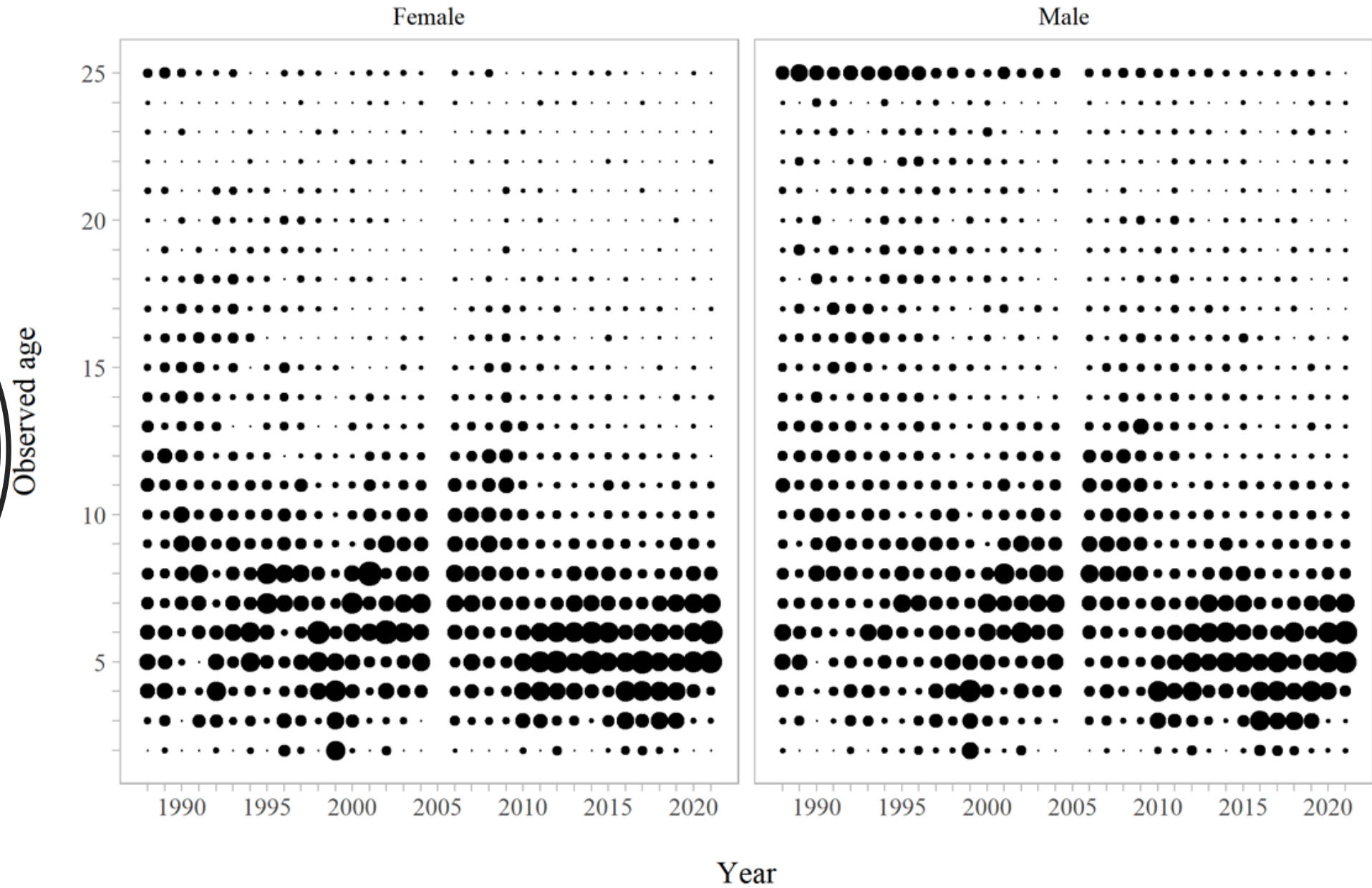
Pot Fishery Performance



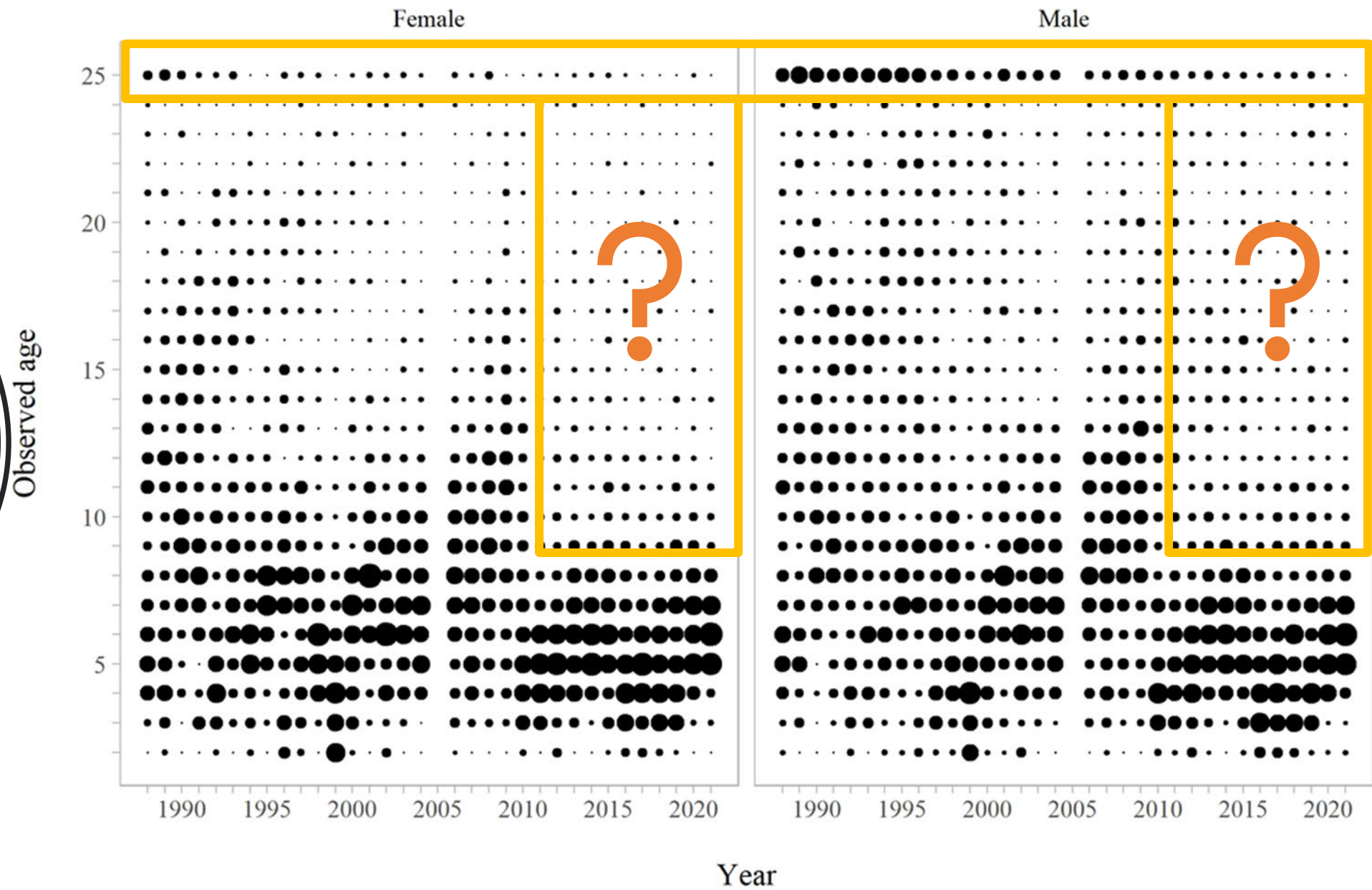
Pot Fishery Performance



Longline Survey Age Structure



Longline Survey Age Structure




Longline Fishery Age Structure

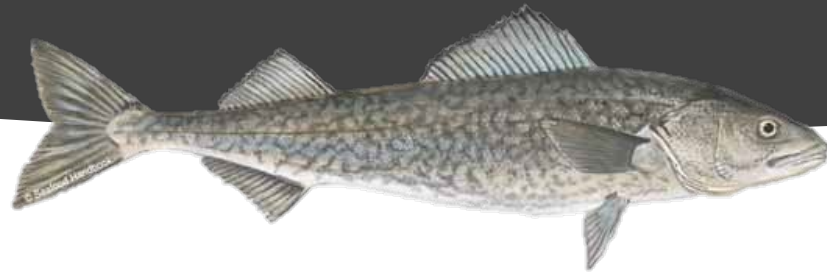




2022 Annual Harvest Objective Outlook

- Expect an increase 
- % increase based on survey CPUE and biological data
- 2014, 2016, 2017, 2018 year classes still maturing but fewer older fish
- AA released next week; PQS forms and registration packets May 9th

Question and Answer



Please ask your questions or type them in the chat for discussion.



2022 Board of Fisheries March in Anchorage

- **Proposal 219:** allow rockfish to be caught and sold in pot gear up to bycatch allowances (currently only thornyhead are sellable)
- **Proposal 220:** allow longlined pots as a legal gear type in NSEI
- **Proposal 221:** reduce escape ring size for commercial sablefish pot gear from 4 inches to 3.75 inches
- **Proposal 222:** full retention of all rockfish and thornyhead
- **Proposal 223:** implement escape rings at 3.75 inches and tunnel opening requirements for personal use and subsistence fishing pot gear for sablefish

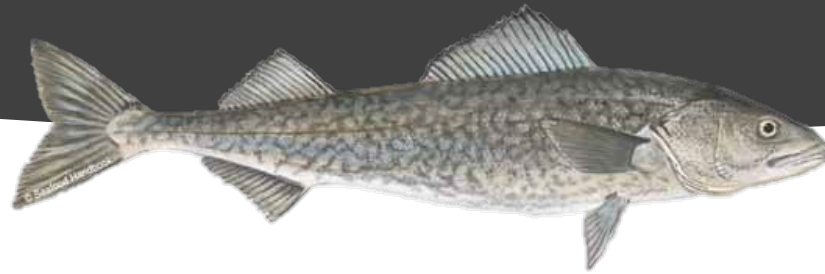


Acknowledgements

Thank you to:

- Groundfish Project Staff
- Survey vessels who participated in our 2021 longline surveys
 - F/V Providence
 - F/V Predator
 - F/V Ilona B
 - F/V Julia Breeze
 - F/V Kristina
- Processors
- NOAA scientists

10-minute break!



**NOAA
FISHERIES**

Please take a break and we'll return shortly with updates from NOAA.

See you next year!

