

STATE OF ALASKA

DEPARTMENT OF FISH AND GAME

DIVISION OF COMMERCIAL FISHERIES

Bill Walker, GOVERNOR

P.O. Box 110024
Juneau, AK 99811
PHONE: (907) 465-4250
FAX: (907) 465-4494

September 15, 2015

Geoduck Permit Holders,

The Alaska Department of Fish and Game will be requiring geoduck logbooks again this season, per regulation 5 AAC 38.142. Twenty logbook forms are included in each pre-season packet, and extras are also available at ADF&G offices in Ketchikan, Petersburg, Craig, Sitka, and Douglas. Logbook data provides the department with specific information about geoduck harvest for the purpose of refining stock assessment surveys. This information is important for improving survey effectiveness and for adding new geoduck beds to the pool of potential survey sites, which has the effect of increasing the Guideline Harvest Level (all else being equal). All details of geoduck logbook harvest information will remain confidential, per Alaska Statute Sec. 16.05.815 and ADF&G Standard Operating Procedure no. III-400.

Logbooks must be completed before a vessel leaves the harvest location (i.e., where the boat was anchored during fishing activities) and completed logbooks must be submitted to the department with associated fish tickets no later than 7 days after landing geoducks. All logbook violations (e.g., non-compliance, fraudulent data) will be turned over to the Alaska Wildlife Troopers for investigation.

Specific directions for filling out logbook datasheet fields are detailed in a separate document, which is included with logbook packets. Several logbook instructions have changed since last fishing season, so *please read these instructions carefully*. Questions about logbooks or feedback on the logbook program are welcomed and should be directed to Mike Donnellan (907)-465-4220 or Jeff Meucci (907)-772-5237.

Thank you very much for your cooperation, and I sincerely hope you have a productive season.

Mike Donnellan
Dive Fisheries Research Project Leader
Alaska Department of Fish and Game
Division of Commercial Fisheries
P.O. Box 110024
Juneau, Alaska 99811
(907) 465-4220

2015-16 Geoduck Logbook Instructions

Changes from previous years' instructions are highlighted below in **bold**, and instructions that are commonly overlooked are emphasized using *italics*.

Using a ballpoint pen, enter information into each of the following fields:

1. Permit Holder: Name of the CFEC permit holder submitting the logbook; *only one permit holder should be listed per logbook form; any other fishing permit holders on board should fill out their own logbook, even if it contains the same harvest information.*
2. Contact Phone: A valid phone number for the CFEC permit holder.
3. Start Date: The date fishing began within a weekly opening.
4. End Date: The date fishing ended within a weekly opening.
5. Subdistrict fished: The official ADF&G subdistrict number and bed code (e.g., 101-11-001) in which the harvest occurred. These numbers can be found in official news releases. *Record data for only one Fishery Area per logbook; if you fish in multiple Fishery Areas during one opening, complete one logbook for each of them.*
6. Area Fished: The official ADF&G Fishery Area name (e.g., Nakat Inlet) in which the harvest occurred. These numbers can be found in official news releases. *Only one Fishery Area may be recorded per logbook, so if you fish in multiple Fishery Areas in one day, complete one logbook for each of them.*
7. Boat Name: The name of the vessel aboard which fishing operations were conducted.
8. ADF&G Numbers: The ADF&G number of the fishing vessel.
9. Hose Length: The length of the hose (in feet) used during hydraulic jet fishing operations.
10. Latitude/Longitude: The geographic coordinates of the Dive Site where the fishing vessel was anchored during fishing operations, recorded in either decimal minutes (e.g., 55° 12.269', 133° 13.627') or decimal degrees (e.g., 55.20448°, 133.22712°). *If the latitude/longitude is recorded in decimal minute format, enter three decimal places after the whole minute; if the latitude/longitude is recorded in decimal degrees, enter five decimal places after the whole degree. **Also record the datum of the latitude/longitude** (e.g., NAD83, NAD27, WGS84); the datum setting is usually not obvious and is buried within a GPS's menu settings. Specifying the correct datum is important because the real-world location can be off by >350 horizontal feet. All of ADF&G's fishery area boundary descriptions are given in NAD83 datum, so we encourage permit holders to use this datum, especially when harvesting near fishery area boundaries.*
11. Depths fished: the depth range (in feet) in which geoducks were harvested

12. Dive times: the duration (in minutes) of each dive conducted at a given Dive Site, and the estimated poundage harvested for each dive at each dive site. **Do not record a piece count**, as in previous years. *If no geoducks were harvested during a dive, enter a zero.*
13. Piece count vs. pound estimate checkbox: Mark “pound estimate” with an X to indicate that poundage has been recorded instead of a piece count, under the “Dive times” section.
14. Substrate: The most common substrate type where fishing occurred. Circle only one.
15. Comments: Record any relevant comments or observations about the dive site that may be relevant to stock assessment surveys and/or management; examples include, but are not limited to, number of sea otters present, evidence of sea otter predation (e.g., pits), relative geoduck densities (low, medium, high commercial density), ease of digging, presence of horse clams or juvenile geoducks, etc.
16. Pounds harvested: The total estimated poundage of geoducks harvested at a single Dive Site. *This figure should be equal to the sum of poundage from individual dives.*
17. Pg. ____ of ____: If more than four dive sites are fished during an opening, use another logbook form and add the appropriate page number in the upper right hand corner. The name of the permit holder and phone number should be included on the second page but additional header details can be omitted.
18. Signature of Permit Holder: Sign your logbook when it is complete and ready to be submitted.

After receiving a fish ticket from the processor, please record the entire fish ticket number (e.g., M02 005711) in the top margin of the logbook. If geoducks originating from a single logbook are split into multiple fish tickets for some reason, record each fish ticket number.

Logbooks must either be submitted to the processor with fish tickets, returned to any ADF&G district office, or mailed directly to: ADF&G, c/o Jeff Meucci, P.O.667, Petersburg, AK 99833, Fax (907)-772-9336. The top white copy needs to be returned to the ADF&G and the permit holder may keep the yellow carbon copy. *Logbooks must be received by ADF&G or postmarked within 7 days of landing.*

This document was last modified by Mike Donnellan on September 15, 2015.

ALASKA DEPARTMENT OF FISH AND GAME

2015-16 Geoduck Fishery Area Charts

Prepared by Mike Donnellan on 9/16/2015

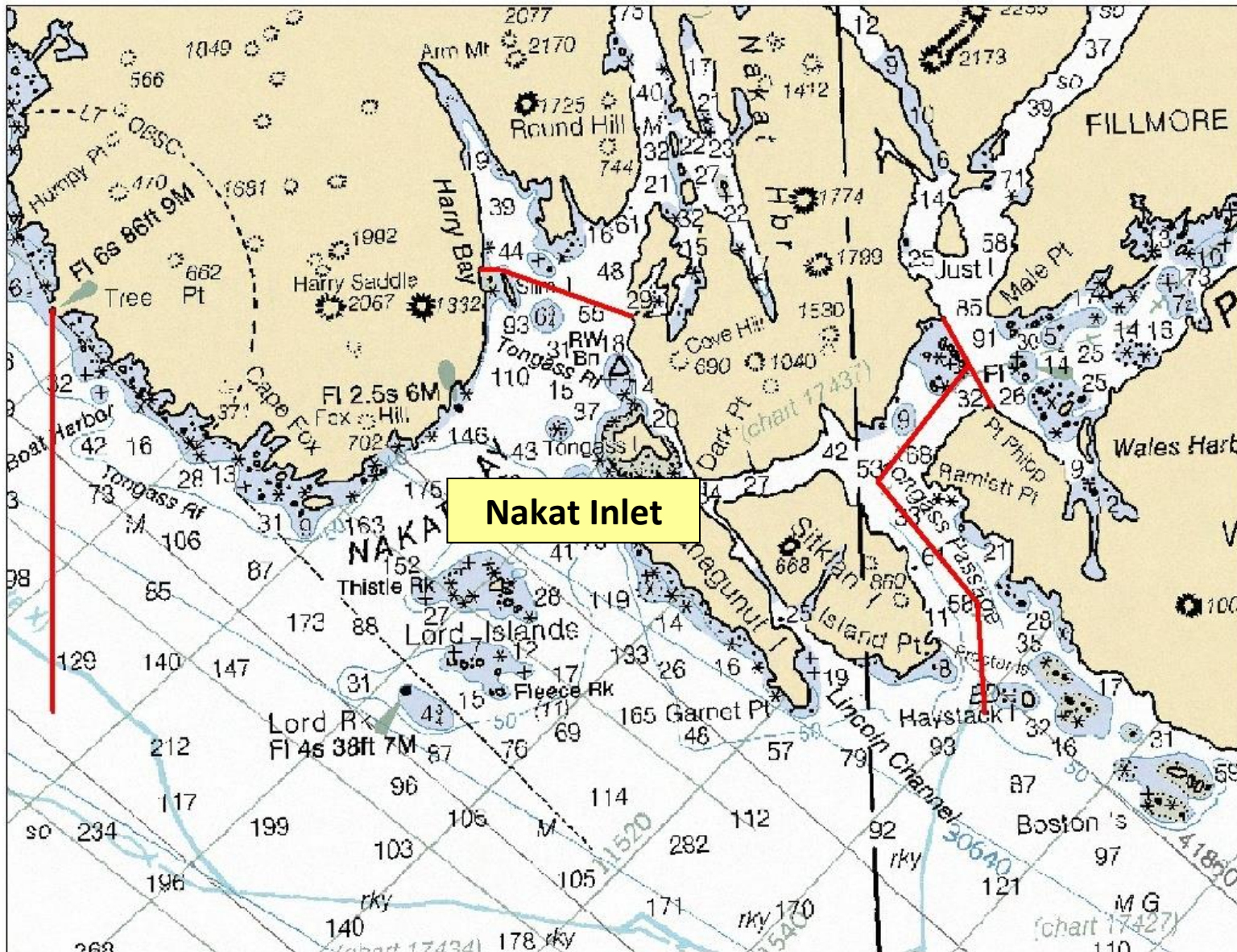


Chart 1. Nakat Inlet (Subdistrict 101-11-001 and 101-11-002). Note: This chart is for general reference purposes only and does not identify boundaries of open areas. See written description for a detailed open area descriptions.

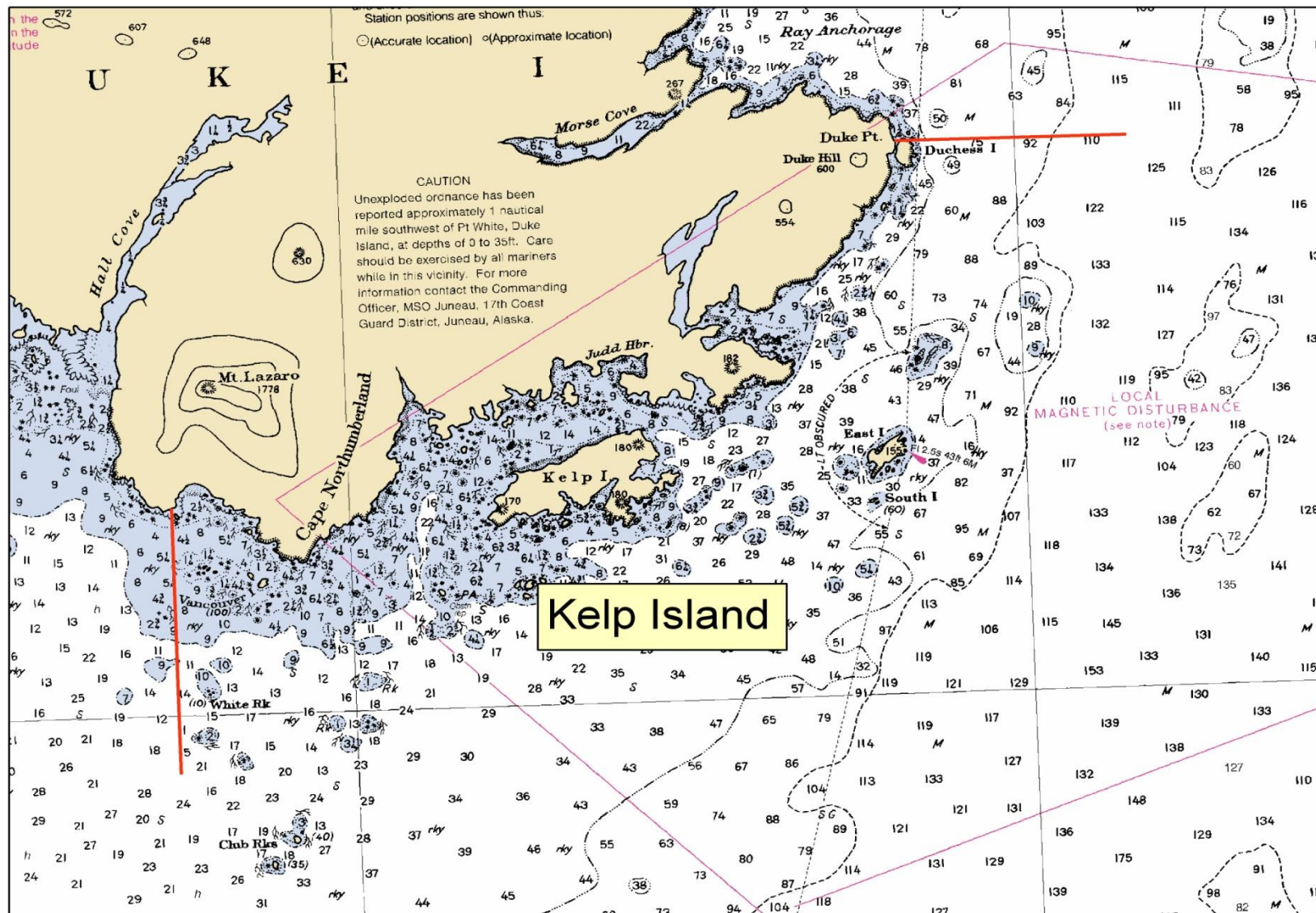


Chart 2. Kelp Island (Subdistrict 101-21-001). Note: This chart is for general reference purposes only and does not identify boundaries of open areas. See written description for a detailed open area descriptions.

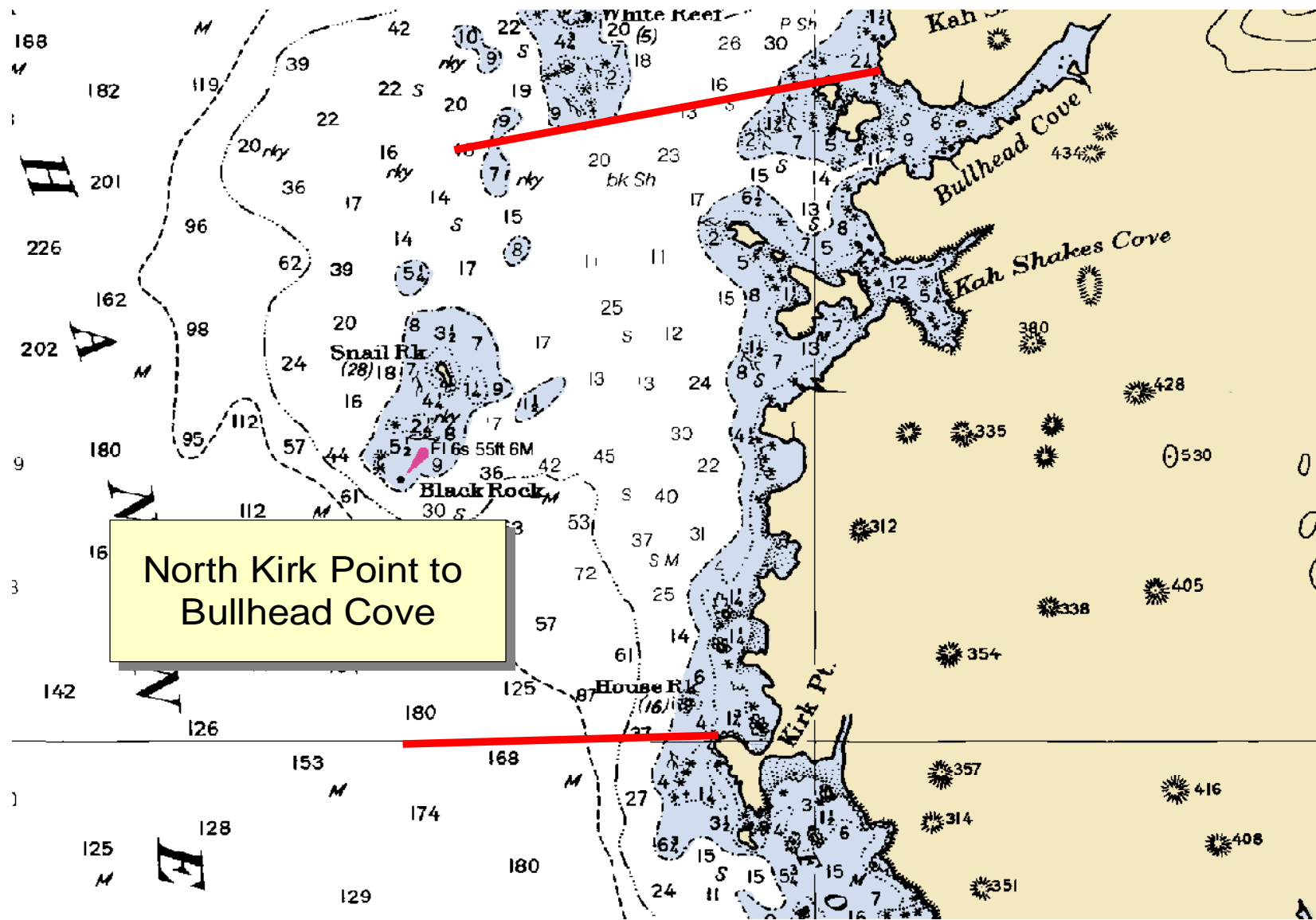


Chart 3. North Kirk Point to Bullhead Cove (Subdistrict 101-23-003). Note: This chart is for general reference purposes only and does not identify boundaries of open areas. See written description for a detailed open area descriptions.

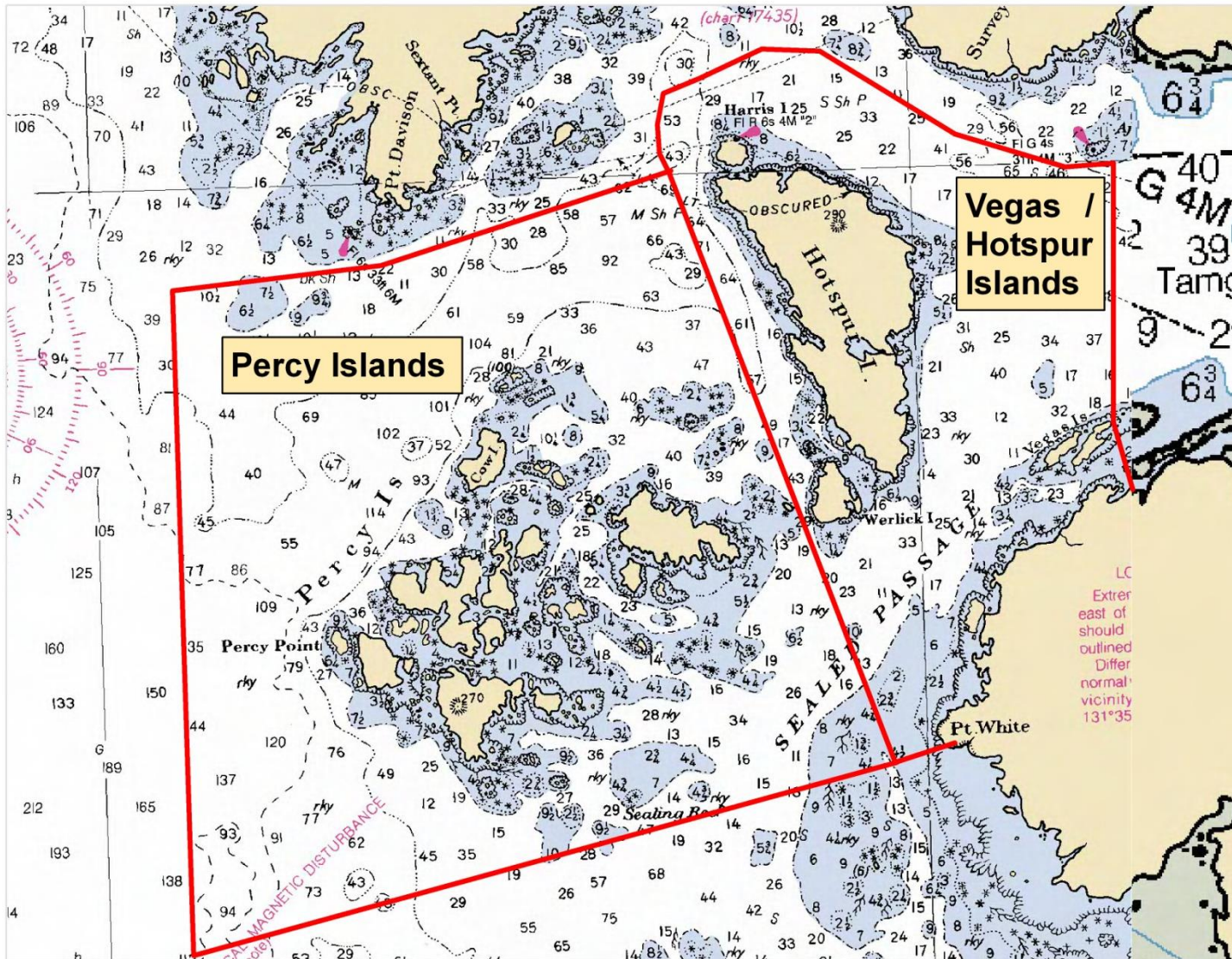


Chart 4. Percy Islands (Subdistrict 101-25-002) and Vegas and Hotspur Islands (Subdistrict 101-25-003). Note: This chart is for general reference purposes only and does not identify boundaries of open areas. See written description for a detailed open area descriptions.

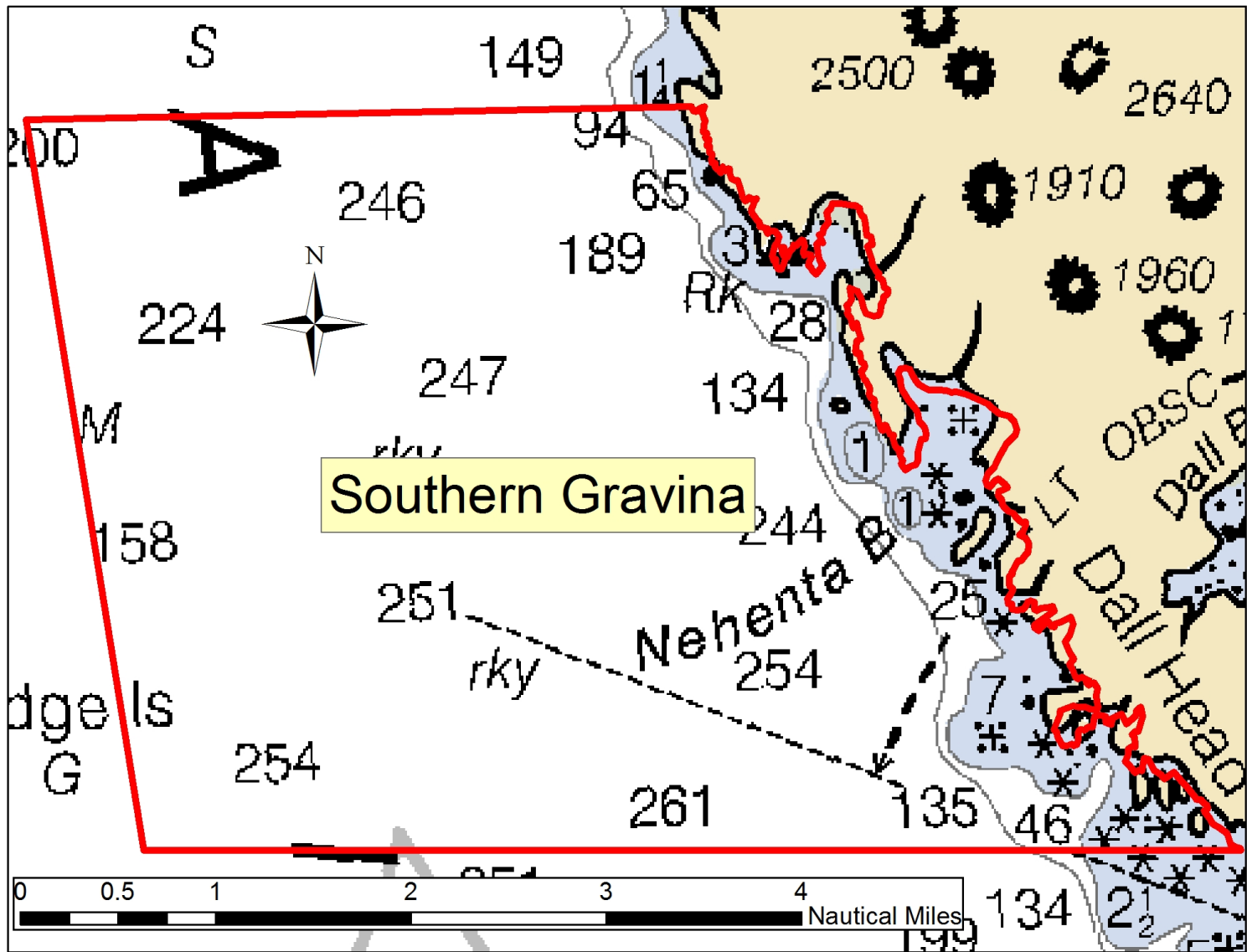


Chart 5. Southern Gravina (Subdistrict 101-29-005). Note: This chart is for general reference purposes only and does not identify boundaries of open areas. See written description for a detailed open area descriptions.

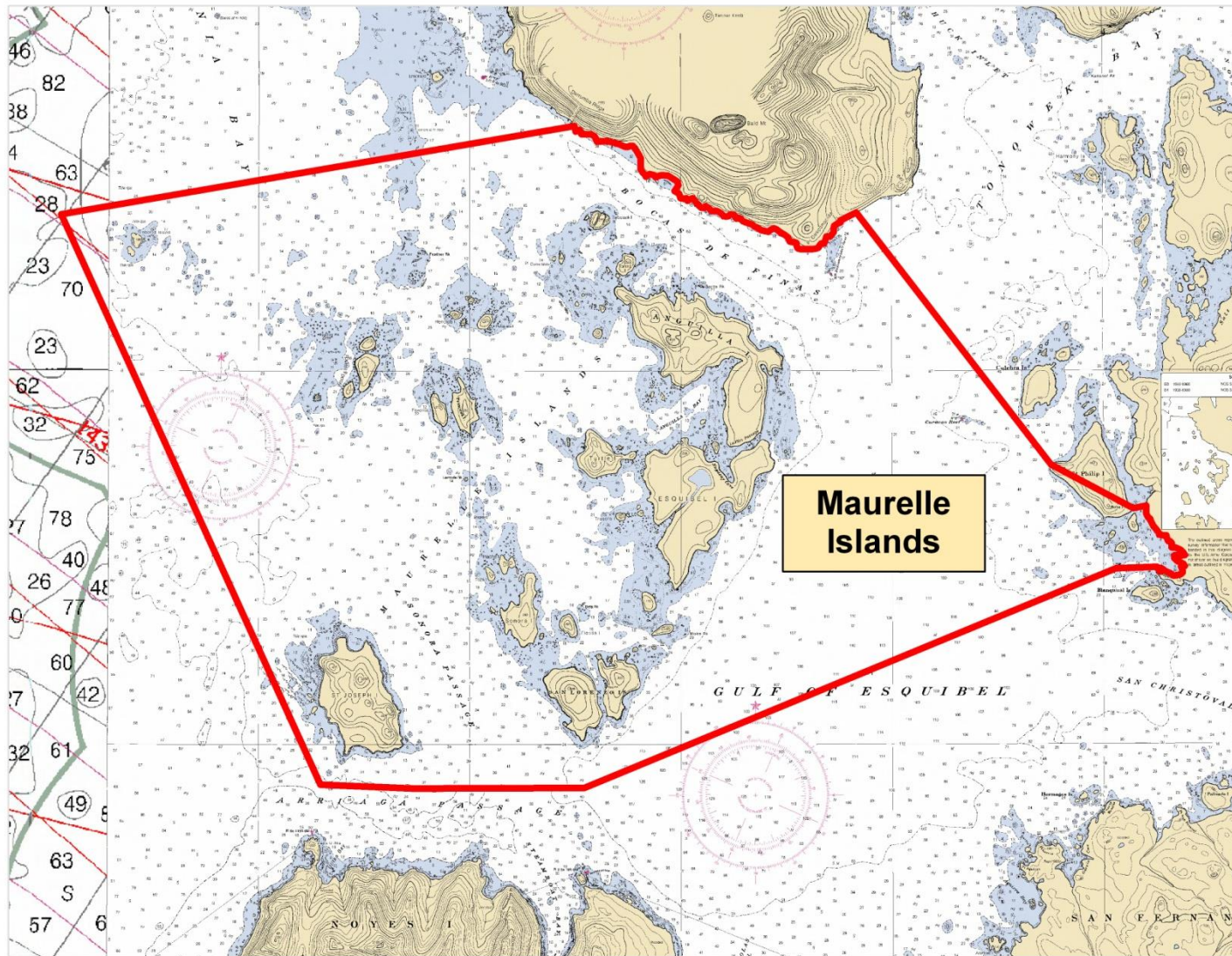


Chart 6. Maurelle Islands (Subdistrict 103-70-009, 103-800-009, 104-40-009, and 104-50-009). Note: This chart is for general reference purposes only and does not identify boundaries of open areas. See written description for a detailed open area descriptions.

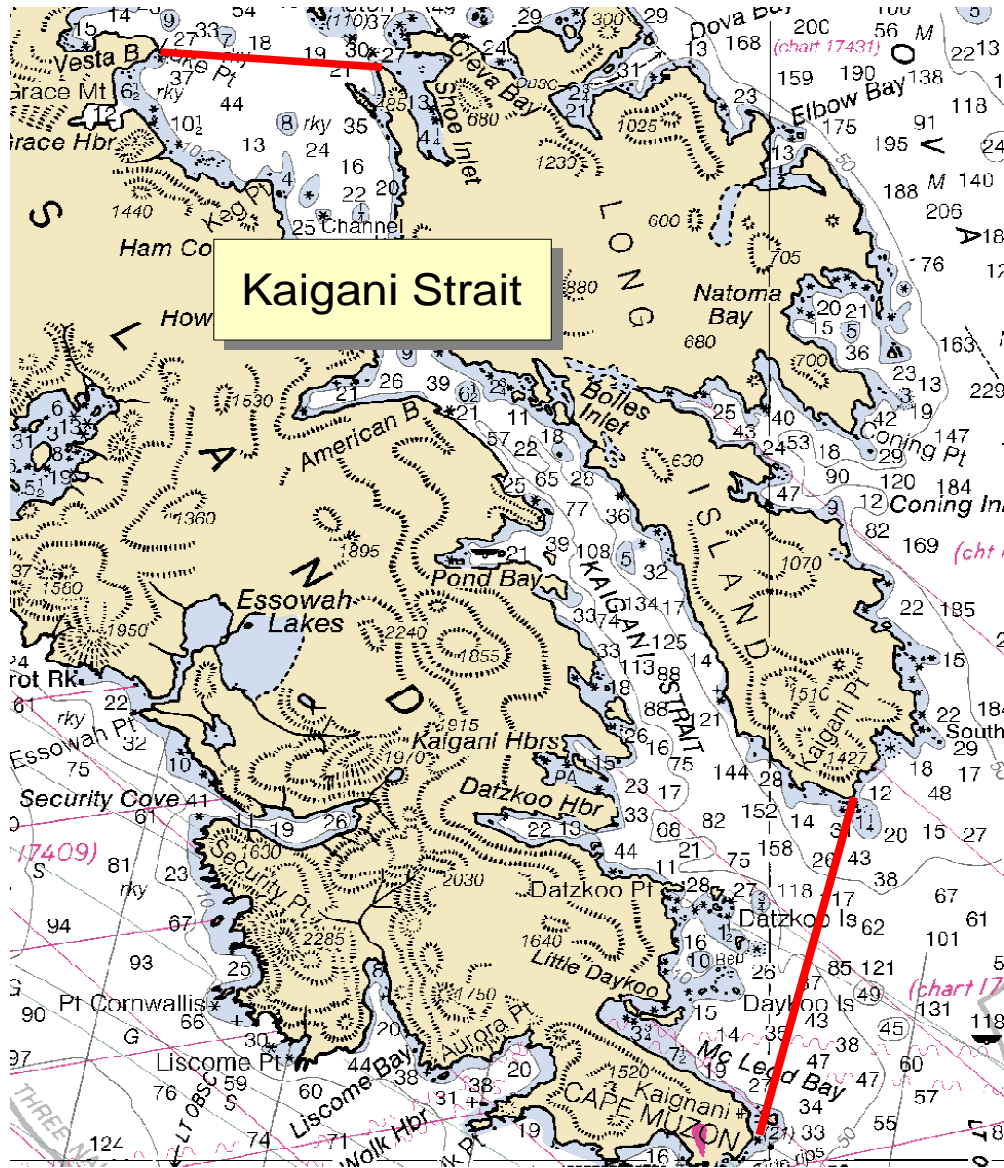


Chart 7. Kaigani Strait (Subdistrict 103-30-001). Note: This chart is for general reference purposes only and does not identify boundaries of open areas. See written description for a detailed open area descriptions.

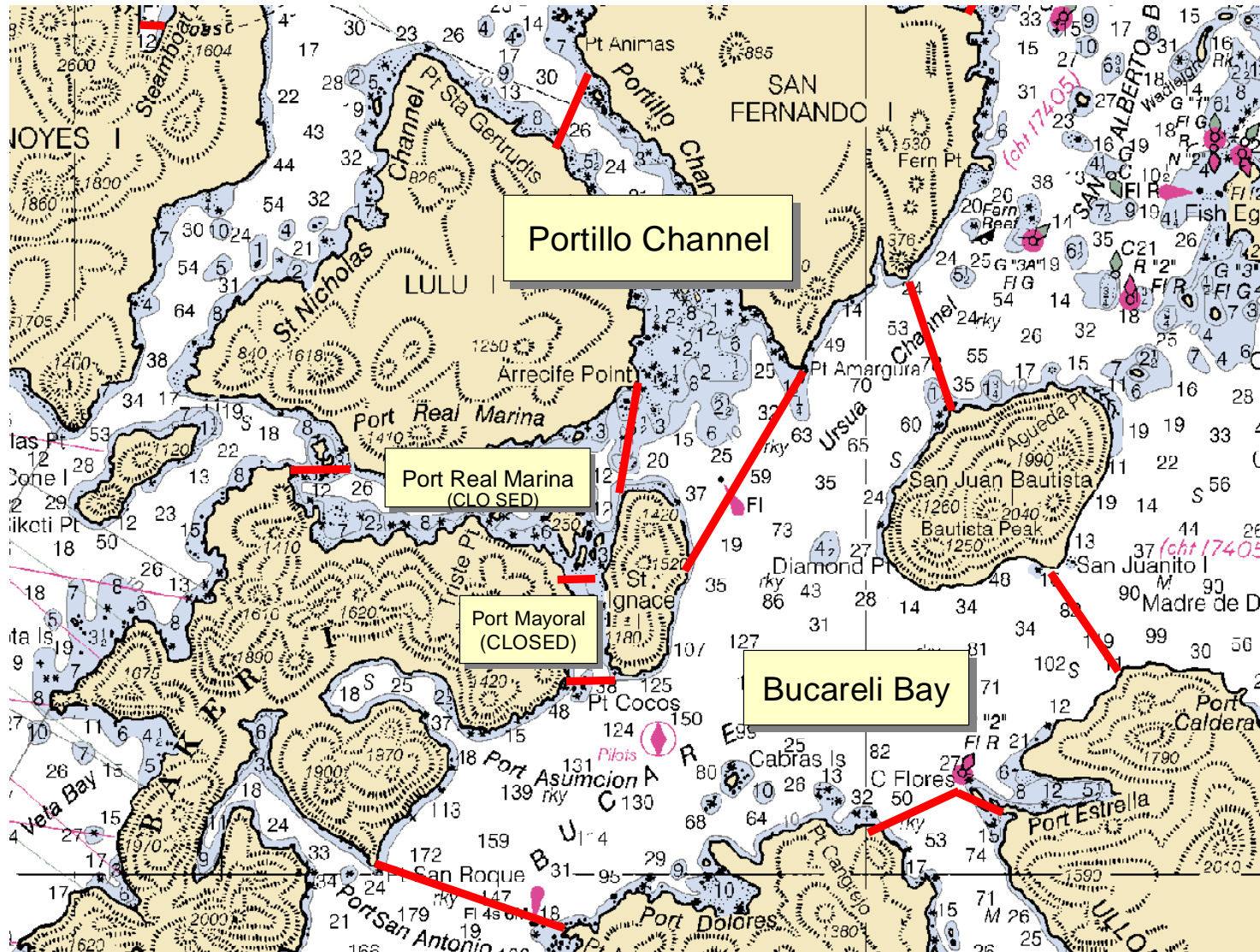


Chart 8. Bucareli Bay and contiguous water (Subdistrict 103-50-003) and Portillo Channel (Subdistrict 103-50-008). Port Real Marina and Port Mayoral are closed but are shown here for reference. Note: This chart is for general reference purposes only and does not identify boundaries of open areas. See written description for a detailed open area descriptions.

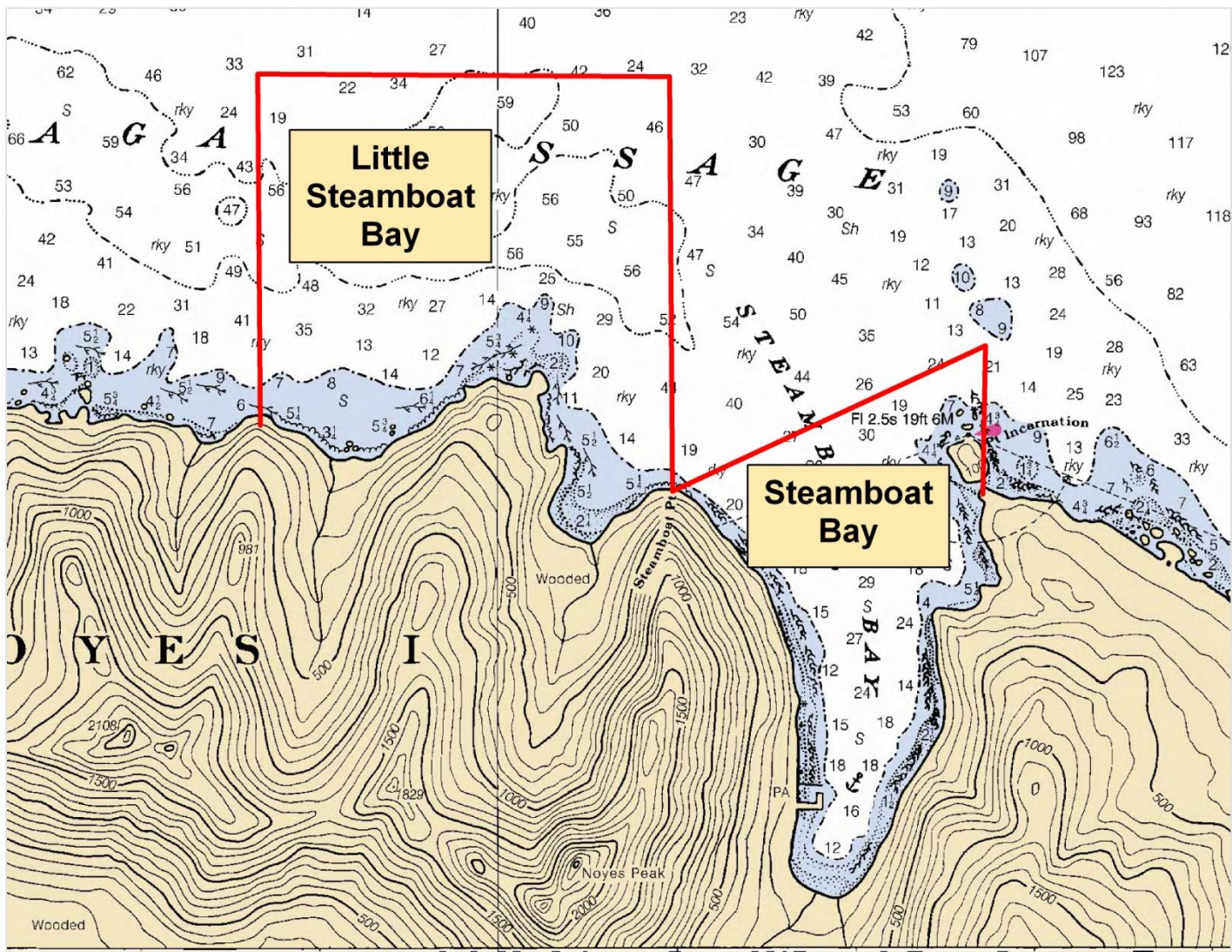


Chart 9. Steamboat Bay (Subdistrict 103-70-003) and Little Steamboat Bay (103-70-003). Note: This chart is for general reference purposes only and does not identify boundaries of open areas. See written description for a detailed open area description,

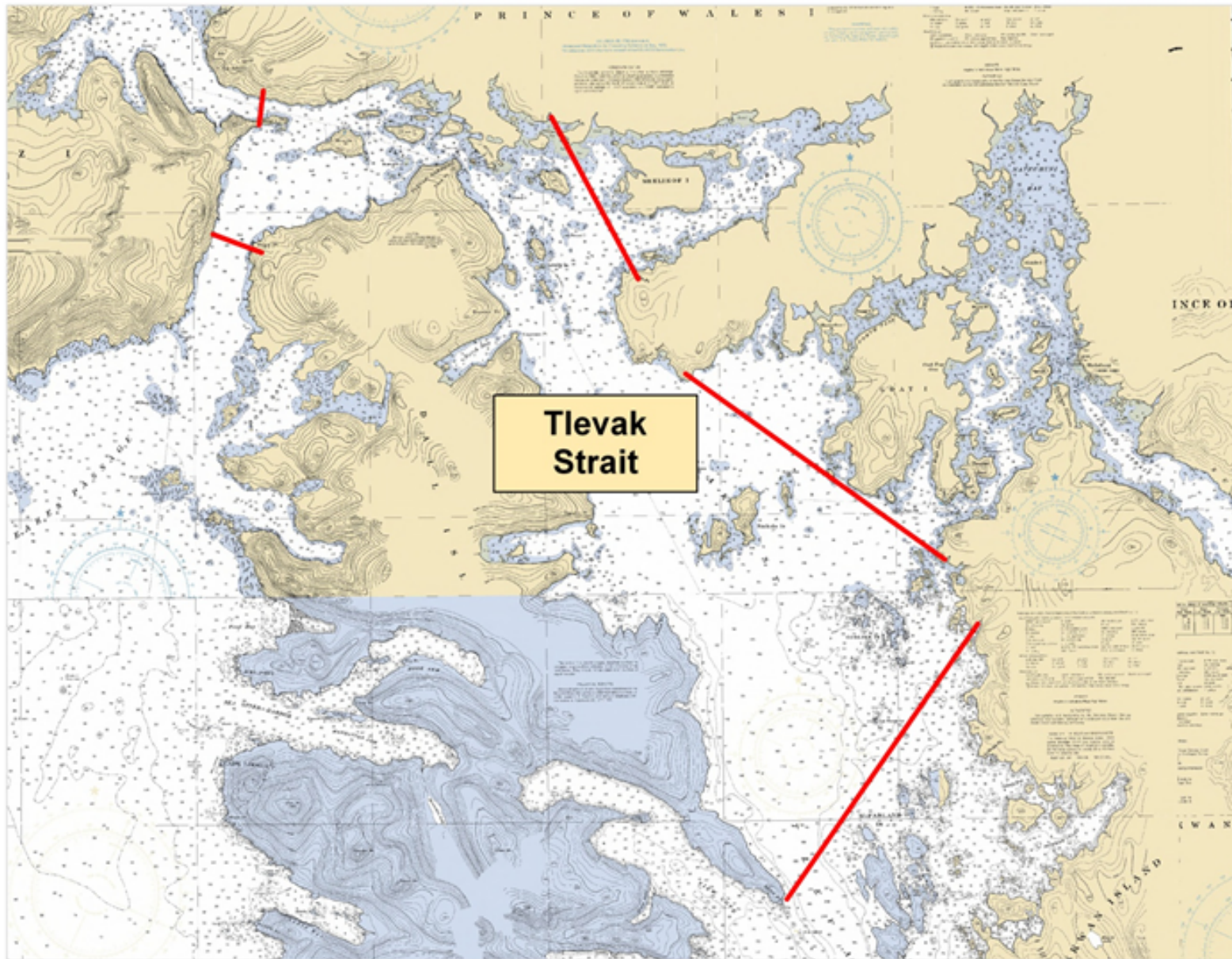


Chart 10. Tlevak Strait (Subdistrict 103-40-009, 103-50-009). Note: This chart is for general reference purposes only and does not identify boundaries of open areas. See written descriptions for detailed open area descriptions.

**Geoduck Logbook Packet
2015/16 Season**

Name: _____

Contact: Jeff Meucci @ ADF&G

P.O. 667; Petersburg, AK 99833

Phone: (907) 772-5237

**Geoduck Logbook Packet
2015/16 Season**

Name: _____

Contact: Jeff Meucci @ ADF&G

P.O. 667; Petersburg, AK 99833

Phone: (907) 772-5237

**Geoduck Logbook Packet
2015/16 Season**

Name: _____

Contact: Jeff Meucci @ ADF&G

P.O. 667; Petersburg, AK 99833

Phone: (907) 772-5237

**Geoduck Logbook Packet
2015/16 Season**

Name: _____

Contact: Jeff Meucci @ ADF&G

P.O. 667; Petersburg, AK 99833

Phone: (907) 772-5237

**Geoduck Logbook Packet
2015/16 Season**

Name: _____

Contact: Jeff Meucci @ ADF&G

P.O. 667; Petersburg, AK 99833

Phone: (907) 772-5237

**Geoduck Logbook Packet
2015/16 Season**

Name: _____

Contact: Jeff Meucci @ ADF&G

P.O. 667; Petersburg, AK 99833

Phone: (907) 772-5237