

A
L
A
S
K
A

2023 - 2024 Migratory Game Bird Hunting Regulations

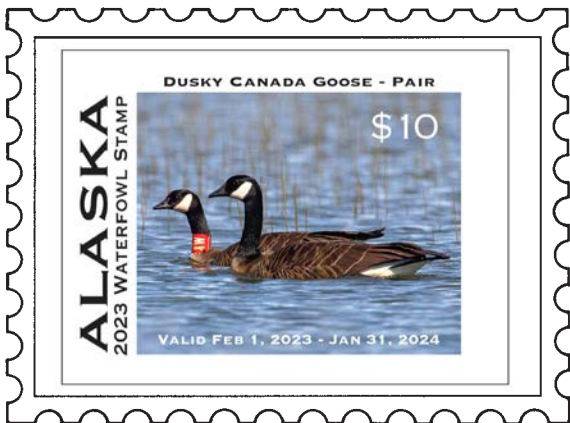


Photo by Eden McCall
Graphic Design by Sue Steinacher



MIGRATORY BIRD REGULATION CHANGES

This is not a comprehensive list of all the detailed changes. It is your responsibility to read the regulations carefully for complete information.

Units 1-4: Changed the waterfowl season by creating a split season open from Sept. 1-Nov. 30, closed Dec. 1-15, open Dec. 16-31.

Unit 1, Mendenhall Wetlands State Game Refuge: Changed the hunter education and age requirements for the regular hunt and the youth hunt.

Units 7 and 15: Reduced the bag limit for long-tailed duck.

The 2023 state duck stamp features a photograph by Eden McCall of a pair of Dusky Canada Geese (*Branta canadensis occidentalis*). During 2022, Eden worked as a U.S. Forest Service media intern for the Chugach National Forest where she spent time capturing photos and videos of waterfowl across the Copper River Delta. When not helping or photographing biologists in the field, she sought to highlight the incredible biodiversity and wildlife of Southcentral Alaska.

Named for their notably darker plumage characteristics, Dusky Canada Geese (duskies) are one of the least abundant and geographically limited sub-species of Canada geese in western North America - facts that have led, in part, to closed hunting seasons throughout much of their winter range in Oregon and Washington. A portion of the dusky population is marked with red neck collars (one can be seen in the 2023 duck stamp image), which allow biologists to monitor survival and can help hunters identify duskies in areas where harvesting these geese is prohibited. Duskies breed exclusively in southcentral Alaska, with the largest concentration nesting on the Copper River Delta near Cordova. Habitat and land-use changes on the breeding and wintering grounds present a complex mixture of potentially detrimental and beneficial conditions for the conservation of this sub-species.

The State of Alaska is an Affirmative Action/Equal Opportunity Employer.
Contact natalie.weber@alaska.gov for alternative formats of this publication.

LICENSE AND STAMP REQUIREMENTS

Resident Hunters All Alaska residents age 18 or older must possess a hunting license to hunt in Alaska and must carry it while hunting. Resident hunters 60 years old or older may obtain a free, permanent identification card issued by the Alaska Department of Fish and Game (ADF&G). This card replaces the sport fishing, hunting, and trapping licenses. Disabled veterans qualified under AS 16.05.341 may receive a free hunting license. Residents with an annual family income equal to or less than the most recent poverty guidelines for the state may buy a \$5.00 low-income license.

Nonresident Hunters All nonresident hunters, regardless of age, must possess the appropriate hunting license. Nonresidents may buy a small game license for \$60.00 or a hunting license for \$160.00 to hunt migratory game birds.

Nonresident Military Personnel Active duty members of the US military or the US Coast Guard, and their dependents, who do not qualify as residents and who are permanently stationed in Alaska may obtain a special military hunting license at the resident rate. This special resident rate only applies to permanently stationed military with permanent change of station (PCS) papers showing effective date of transfer.

Federal Duck Stamps All waterfowl hunters 16 years of age or older must have a current Federal Migratory Bird Hunting Stamp except:

A **Federal Duck Stamp** is not required to hunt in any season if you are eligible to participate in the harvest of waterfowl and their eggs for subsistence purposes in the spring and summer.

If you are not eligible to hunt in the spring and summer, but are a qualified permanent rural resident (defined by Subsistence Management Regulations), a Federal Duck Stamp is not required to hunt in the fall-winter season.

A state hunting license and state duck stamp are required to hunt in any season, unless you qualify for license and duck stamp exemptions. For questions or clarifications, please contact the United States Fish and Wildlife Service (USFWS) Office of Law Enforcement at (907) 786-3311.

Federal duck stamps can be purchased online from some states, and used in Alaska. Visit this website for more information:

<https://www.fws.gov/service/buy-duck-stamp-or-e-stamp>

State Duck Stamps An Alaska Waterfowl Conservation Stamp (\$10.00) is required to hunt waterfowl unless you:

- are an Alaska resident under the age of 18;
- are an Alaska resident 60 years old or older;
- are a disabled veteran eligible for a free license; or
- qualify for a low income license.

Continued...

(cont.) LICENSE AND STAMP REQUIREMENTS

State and federal stamps that are purchased from license vendors must be signed across the face in ink and must be carried at all times while hunting waterfowl. Stamps do not need to be attached to a hunting license. State stamps are not required to hunt snipe or cranes.

If purchased online, the state duck stamp will be numerically printed on your license. You can purchase licenses and state duck stamps online at:

<http://adfg.alaska.gov/>.

HIP ENROLLMENT

Most migratory bird hunters are required to enroll in the nationwide Harvest Information Program (HIP). Individuals who are not required to purchase a state duck stamp (see above) are exempt from HIP enrollment. Hunters required to enroll in HIP must carry proof of enrollment while hunting. Your state duck stamp is proof that you enrolled in the HIP and the serial number on the front of the state duck stamp is the HIP number.

HIP enrollment can be accomplished by:

1. Completing a HIP form at a license vendor when purchasing a state duck stamp
2. Completing the HIP questionnaire when purchasing a state duck stamp online.

Hunters selected for the National Harvest Survey will receive a letter and hunting record form to keep track of harvested birds. A more detailed questionnaire will be sent later to record hunting effort and harvest during this season. Survey responses are only used for estimating hunter activity and harvest.

For more HIP enrollment information call (907) 267-2159.

YOUTH HUNTER EDUCATION REQUIREMENT

- In Units 7, 13, 14, 15, and 20:
- If you were born after January 1, 1986 and are 18 years old or older, you must complete Basic Hunter Education before hunting.
- If you are under 18, you must either complete Basic Hunter Education or hunt under the direct supervision of a hunter who has completed Basic Hunter Education or was born on or before January 1, 1986.

ONLINE REGULATIONS

The Migratory Bird Hunting Regulations may be obtained online at:

<http://www.adfg.alaska.gov/index.cfm?adfg=hunting.huntingregulations>

LOOKING FOR A WATERFOWL HUNTING GUIDE?

All waterfowl hunting guides operating in Alaska are required to register with ADF&G before guiding clients. If you would like a list of registered waterfowl guides, view or download the current list at:

<https://www.adfg.alaska.gov/index.cfm?adfg=waterfowlhunting.resources>,

or contact the Waterfowl Program at 907-267-2159. ADF&G does not recommend or vouch for any specific guides or businesses.

ILLEGAL METHODS OF TAKING MIGRATORY GAME BIRDS

The following restrictions apply to the taking of waterfowl, snipe, and cranes.

You May NOT:

- Hunt with a rifle, pistol, or a shotgun larger than 10-gauge.
- Hunt with a shotgun capable of holding more than three shells (magazines must be “plugged” to hold two shells).
- Hunt with shot other than federally-approved nontoxic shot.
- Have lead shot in personal possession while hunting.
- Hunt with shot sizes larger than T (0.20” diameter).
- Shoot on, from, or across the drivable surface of any constructed road or highway.
- Use poison or a substance that temporarily incapacitates wildlife to kill any game species without written permission from the Board of Game, or with the use of an Electronic Control Device (ECD) Taser-type device that temporarily incapacitates game, except under a permit issued by ADF&G.
- Use a helicopter to hunt, transport hunters, hunting gear, game meat or trophies, or equipment used to pursue or retrieve game.
- Take game from motorized vehicles on land, except under provisions for disabled persons in state and federal regulations.
- Take game from a motor driven boat if the motor is running or if the boat is still moving because of the motor. You may use the motor to retrieve a dead or injured bird.
- Drive, herd, molest or harass game with any motorized vehicle.
- Use a machine gun or set gun.
- Wear foot gear with felt soles or other absorbent fibrous material in freshwater streams.
- Use a pit, fire, artificial light, laser sight, electronically-enhanced night vision, any forward looking infrared device, radio communication, cellular or satellite telephone, artificial salt lick, explosive, expanding gas arrow, bomb, smoke, or chemical (excluding scent lures).

FIELD POSSESSION

No person shall possess, have in custody, or transport more than the daily bag limit or aggregate daily bag limit, whichever applies, of migratory game birds, tagged or not tagged, at or between the place where taken and either (a) automobile or principle means of land transportation; or (b) personal abode or temporary or transient place of lodging; or (c) a migratory bird preservation facility; or (d) a post office; or (e) common carrier facility (50 CFR 20.35).

It is illegal to possess live birds without a permit. Migratory game birds wounded by hunting and reduced to possession by the hunter shall be immediately killed and become part of the daily bag limit. Waterfowl may be plucked in the field but one fully feathered wing or the head must remain attached to allow species identification during transport. See below, 'Additional Federal Regulations' for tagging (labeling) and transporting birds.

SALVAGE OF MEAT

You must salvage all the edible meat of game birds for human consumption. For ducks and snipe this is defined as the meat of the breast. For swans, geese (including brant) and cranes this is defined as the meat of the breast, the meat of the legs (femur and tibia-fibula), and the meat of the upper wings (humerus).

USE OF GAME

You may not buy or sell game meat.

MARKED MIGRATORY GAME BIRDS

You can provide valuable data on the origin, movements, and ages of ducks and geese by reporting band numbers and collar observations. Game birds that are marked (banded, collared, transmitter attached, web or wing tag, etc.) for scientific studies can be legally harvested, though targeting marked game birds is discouraged. However, if you harvest a marked game bird, please report the band to the United States Geological Survey (USGS) or follow the contact information on the marker. You may be asked to return electronic markers to the agency which purchased them, but you may keep leg bands and other markers and you will receive a certificate showing the date and location each bird was originally marked. Please report bands (and other markers) to the USGS Bird Banding Laboratory at: www.reportband.gov.

ADDITIONAL FEDERAL REGULATIONS

In addition to state regulations, certain federal regulations (50 CFR 20) apply to migratory game bird hunting. For complete federal hunting rules, contact the USFWS, Office of Law Enforcement, 1011 E. Tudor Road, Anchorage, AK 99503 (907) 786-3311.

No person shall take migratory game birds:

- With a trap, net, fishhook, swivel gun, punt gun, or battery gun.
- From a sink box providing concealment below the water.
- By the use or aid of live decoys.
- Using recordings of migratory bird calls or electrically amplified imitations of bird calls.
- By baiting or on areas reasonably known to be baited. Areas are considered baited for ten days after complete removal of all bait.

Tagging (Labeling of Game)

You must label migratory birds before leaving them at any place other than the hunter's residence or before placing them in the custody of another person for any purpose. A tag must include the number and species of birds, date killed, and address and signature of the hunter.

Transportation and Shipment

All migratory game birds being transported in the United States must have a head or one fully feathered wing attached until they reach the possessor's home or a preservation facility. Packages containing migratory game birds or parts that are shipped by post or common carrier must be marked on the outside with the name and address of both the sender and recipient, and the number of birds, by species, in the package.

Import/Export

Check both specific export limits of other countries and import limits for the United States. One fully feathered wing must remain attached to all migratory game birds being imported or exported until they reach one's home or a preservation facility. No person may import migratory game birds belonging to another person.

***If you intend to hunt on private land,
always ask permission of the owner and respect
the privileges afforded to you by the owner.***

NONTOXIC SHOT: A Solution to Lead Poisoning

Nontoxic shot is required for hunting waterfowl, sandhill cranes, and snipe in Alaska. It is a violation to have shells loaded with lead shot in personal possession while hunting migratory game birds. Shot sizes larger than T (0.20" diameter) are prohibited. Nontoxic shot also is required for muzzleloading shotguns. Steel remains the most widely used and extensively tested nontoxic shot in the field. A complete list of approved nontoxic shot is available at:

<https://www.fws.gov/story/2022-04/nontoxic-shot-regulations-hunting-waterfowl-and-coots-us>

SHOOTING STEEL

Steel is LIGHTER and ROUNDER than lead shot. These characteristics affect both the energy for penetrating birds and the size of the downrange shot string needed to intercept birds. To compensate for weight differences and improve downrange energy, use steel shot one or two sizes larger than a lead load. Also, more open chokes such as Improved Cylinder and Modified will enlarge patterns and lengthen shot strings to provide more margin of error in aim and trigger timing.

FOR MORE INFORMATION:

For information on shotshell performance and shotgun skills clinics, contact ADF&G, Hunter Information and Training at (907) 267-2373.

TOM ROSTER'S 2016 NONTOXIC SHOT LETHALITY TABLE[©]

Proven Nontoxic Loads For Waterfowl, Doves, & Upland Game Birds¹ Vel. Range Tested: 1,225 – 1,700 FPS	Observed Hunters' Typical Shooting Range During Activity (Yards)	Most Effective Nontoxic Shot Size(s) For Birds Listed Under ACTIVITY At The Distances Listed In The Second Column	Minimum Lead Weight (Ounces)	Minimum Pellet Hits Needed on Lethal Areas for Clean Kills	Minimum Pattern Count Needed at Any Distance for Clean Kills (# of Pellets in 30" Circle)	Most Effective Choke(s) at Distance (Given in Lead Shot Choke Designations)	NOTE: The pellets in the steel shot loads listed in this table were traditional, highly spherical ball-shaped pellets of ~7.86 g/cc density and 90-95 DPH hardness. The HEVI-Shot pellets were of 12.0 g/cc density and are harder than traditional steel pellets.
ACTIVITY							
Large Geese At Long Range	50-65	Steel BBB to T	1-1/4	1-2	50-55	Improved Modified	
Giant, Western, Atlantic and Interior Canadas	50-70	HEVI-Shot 2 to B	1-1/2	1-2	50-55	Improved Modified, Full	
Large Geese Over Decoys	35-50	Steel BB to BBB	1-1/4	1-2	50-55	Improved Cylinder, Modified	
	35-50	HEVI-Shot 2 to B	1-1/2	1-2	50-55	Improved Cylinder, Modified	
Medium/Small Geese Long Range	50-65	Steel BB to BBB	1-1/4	1-2	60-65	Improved Modified	
Snow, White-fronted, Lesser Canadas	50-65	HEVI-Shot 2	1-1/2	1-2	60-65	Improved Modified, Full	
Medium/Small Geese Over Decoys	35-50	Steel 2 to BB	1-1/4	1-2	60-65	Light Modified, Modified	
	45-65	HEVI-Shot 4 to 2	1-1/4	1-2	60-65	Improved Cylinder, Modified	
Large Ducks At Long Range	45-65	Steel 2 to 1	1-1/8	1-2	85-90	Improved Modified, Full	
Mallard, Black, Pintail, Goldeneye, Gadwall	45-65	HEVI-Shot 4	1-1/4	1-2	85-90	Improved Modified, Full	
Large Ducks Over Decoys	20-45	Steel 6 to 2	3/4 - 1	1-2	85-90	I.C. (20-35 Yds), Mod. (35-45 Yds)	
	20-45	HEVI-Shot 6 to 4	1-1/8	1-2	85-90	I.C. (20-35 Yds), Mod. (35-45 Yds)	
Medium Ducks Over Decoys	20-45	Steel 6 to 3	1	1-2	115-120	I.C. (20-35 Yds), Mod. (35-45 Yds)	
Wigeon, Scaup, Shoveler	20-45	HEVI-Shot 6 to 4	1-1/8	1-2	115-120	I.C. (20-35 Yds), Mod. (35-45 Yds)	
Small Ducks Over Decoys	20-45	Steel 6 to 4	1	1-2	135-145	Mod. (20-35 Yds), Full (35-45 Yds)	
Teal, Ruddy, Bufflehead	20-45	HEVI-Shot 6	1-1/8	1-2	135-145	Mod. (20-35 Yds), Full (35-45 Yds)	
Swatter Load For Wounded Birds	20-30	Steel 7 to 6	1	1	175	Improved Modified, Full	

This table summarizes Tom Roster's analyses to date of the lethality data bases for certain of the 16 U.S. steel vs lead waterfowl & dove shooting tests published between 1968 & 2014 & one steel-only pheasant shooting test (1999) plus lethality data bases owned by ammunition companies for birds taken with nontoxic shot loads Roster tested for them & the CONSEP Org. Note: Steel #BBB (190") & HEVI-Shot #2 (150") have exhibited the best all-around performance for taking geese; steel #3 (140") & HEVI-Shot #4 (130") the best all-around performance for taking ducks; steel #2 & HEVI-Shot #4 (130") the best all-around performance for taking ring-necked pheasants; & steel 7 & (100") the best all-around performance for taking doves. ¹These findings are derived from testing 2 1/2", 28 gauge; 3", 20 ga.; 2 1/4", 3" & 3 1/2" 12 ga.; & 3 1/2", 3" & 3 1/2" 10 ga. steel loads; plus 2 1/2", 28 ga.; 2 1/4", 3" & 3 1/2" 12 ga.; and 2 1/4", 3" & 3 1/2" 12 ga. HEVI-Shot loads. © Copyright 2016 by Tom Roster. For answers to questions on this table contact: Tom Roster, 1190 Lynnewood, Klamath Falls, OR, USA 97601. tomroster@charter.net

WHAT HUNTERS SHOULD KNOW ABOUT AVIAN INFLUENZA

Quick Facts: Avian influenza is common in wild bird populations, but generally does not cause obvious clinical signs of infection. The virus is largely spread through fecal droppings and also nasal and oral discharges. Few bird viruses are able to infect humans, but influenza viruses are able to adapt and may change over time. Some strains of Avian Influenza are considered highly pathogenic (HPAI) because they are highly contagious and deadly to wild birds and domestic poultry. The Centers for Disease Control believes that the public health risk from HPAI is low but hunters should take the following precautions when hunting and eating migratory game birds to reduce infection risk.

To prevent contact with Avian influenza or other avian diseases hunters should take these precautions:

1. Do not handle birds that are obviously sick or birds found dead.
2. Keep your game birds cool, clean, and dry.
3. Avoid contact between hands and mouth or eyes--do not eat, drink, or smoke while cleaning your birds.
4. Use rubber or disposable latex gloves when handling or cleaning game.
5. Wash your hands with soap and water or alcohol wipes after dressing birds.
6. Clean all tools and surfaces immediately afterward; use hot soapy water, then disinfect with a 10% chlorine bleach solution.
7. Cook game meat thoroughly to an internal temperature of 165°F to kill disease organisms and parasites.

TO REPORT DEAD BIRDS

If you find a group of sick or dead birds, contact wildlife authorities. Please leave birds where they are and call as soon as you can.

US Fish and Wildlife Service

Alaska Sick/Dead bird hotline 1-866-527-3358

FOR HUMAN HEALTH QUESTIONS

Alaska Dept. of Health & Social Services (888) 972-6358

FOR MORE INFORMATION ABOUT HPAI

www.cdc.gov/flu/avianflu/

<https://fws.gov/avian-influenza>

www.aphis.usda.gov/publications/animal_health/2015/fsc_hpai-hunters/pdf

<https://www.usgs.gov/mission-areas/ecosystems/avian-influenza>

IMPORTANT DEFINITIONS

- Migratory Game Birds are considered small game and include waterfowl (ducks, geese, swans), sandhill cranes, and snipe.
- All duck species (except sea ducks) count towards the general duck bag and possession limits. For regulation purposes, bufflehead, Barrow's and common goldeneyes are included in the general duck bag limit and not considered sea ducks.
- Sea ducks are harlequin duck; long-tailed duck; common and king eider; surf, white-winged, and black scoter; common, hooded and red-breasted merganser.
- Geese: Canada geese are any small-bodied (Cackling) or large-bodied (Canada) white-cheeked geese. White geese include snow and Ross' geese.

SHOOTING HOURS

Migratory bird hunting is permitted from one-half hour before sunrise until sunset. The tables included in this book are based on National Oceanic and Atmospheric Administration (NOAA) data (<https://www.esrl.noaa.gov/gmd/grad/solcalc/>). The times are exact shooting times, starting on Alaska Daylight Time and changing to Alaska Standard Time on the first Sunday in November (November 5, 2023). Shooting times differ by latitude and longitude, and change daily.

If you are not at one of the listed locations, you may estimate times by adding 4 minutes for each degree of longitude west, or subtract 4 minutes for each degree of longitude east of the nearest listed location. Example: if you are in Kotzebue, you are 3 degrees east of the nearest location, Nome. Your shooting will begin and end 12 minutes (3 degrees x 4 minutes) before the times listed for Nome.

MIGRATORY GAME BIRD PERMIT HUNTS

Emperor Geese

- Emperor goose hunting is open by registration permit to Alaska residents (see license and stamp requirements on page 3).
- A resident hunter may register for one permit in multiple hunt areas.
- Registration permits are available online at <http://hunt.alaska.gov>, at ADF&G offices, and at licensed vendors in rural coastal villages where emperor geese are hunted beginning July 5.
- Nonresident hunters are able to participate in the emperor goose hunt if selected for an Alaska draw permit (DO508). Alaska draw permits will be issued to 25 applicants. The application period is November 1-December 15 for a hunt the following year. Nonresidents selected for a draw permit may hunt in four zones that correspond to resident hunt areas: Units 8, 9, 10, and Izembek State Game Refuge (see Draw Hunt Supplement online at <http://hunt.alaska.gov> for additional information).
- A guide is not required for nonresident emperor goose hunters.
- A resident or nonresident permit allows the harvest of ONE (1) emperor goose per hunter per season; regardless of the number of permits held or areas hunted.
- Successful hunters MUST REPORT their harvest by phone 1-800-478-7468 or online at <http://hunt.alaska.gov>; within 24 hours or 72 hours depending on hunt area (see hunt zone regulations on following pages for reporting periods).
- Hunt areas will be closed by Emergency Order when area harvest quotas are met (see hunt zone regulations on following pages for hunt quotas).
- Proxy hunting is allowed for Alaska residents for emperor geese. Contact your local ADF&G office for eligibility information and the Proxy Hunting Authorization form.

Tundra Swan

- Tundra swans are open by registration permit to Alaska residents and non-residents with a current hunting license in Units 17, 18, 22, and 23 during September 1 – October 31.
- The bag limit per permit is 3 swans.
- A hunter may obtain 1 permit per season.
- Registration permits are available online at <http://hunt.alaska.gov> or in person at ADF&G offices, beginning July 5.

Canada Geese

- A registration permit is required to hunt Canada geese on Middleton Island in Unit 6.
- The permit is available at the ADF&G office in Cordova and Anchorage.
- The season is open from September 28 – December 16.
- The permit has a limit of 1 Canada goose.

Falconry

- A falconry permit is required to take, possess or hunt with an authorized species of raptor.
- Total combined limits for all migratory game birds taken by falconry are 3 per day, 9 in possession.
- Falconry permit applications are available online at <http://hunt.alaska.gov>.

Special Use Areas

- Permits are required to hunt migratory game birds on the Anchorage Coastal Wildlife Refuge and the Mendenhall Wetlands State Game Refuge.
 - >>The Anchorage Coastal Wildlife Refuge permit (WU002) can be obtained at the ADF&G website or at the ADF&G office in Anchorage.
 - >>The Mendenhall Wetlands permit (WU001) can be obtained online at the ADF&G website or at the ADF&G office in Douglas.
- All hunters must have completed Basic Hunter Education to obtain a permit.

SOUTHEAST Units 1-4 (see pg. 11 for definitions)

Sept. 1-Nov. 30, and Dec. 16-Dec. 31

(Season closed Dec. 1-15)

Ducks ¹	7 per day, 21 in possession
Sea Ducks ² Residents.....	10 per day, 20 in possession
Nonresidents.....	7 per day, 20 per season
Canada Geese.....	4 per day, 12 in possession
White-fronted Geese.....	4 per day, 12 in possession
White Geese.....	6 per day, 18 in possession
Brant.....	2 per day, 6 in possession
Emperor Geese.....	NO OPEN SEASON
Tundra Swans.....	NO OPEN SEASON
Snipe.....	8 per day, 24 in possession
Sandhill Cranes.....	2 per day, 6 in possession

Special Bag Limit Restrictions

¹ **DUCKS:** General duck limits may include no more than 2 canvasback per day, 6 in possession.

² **SEA DUCKS:**

- Steller's and spectacled eiders are closed statewide.
- **Residents** may take no more than 6 per day, 12 in possession of harlequin ducks and no more than 6 per day, 12 in possession of long-tailed ducks.
- **Nonresidents** may not take or possess more than 20 sea ducks per season, including no more than 4 each of any sea duck species.

Trumpeter swans are closed statewide.

RESTRICTED AND CLOSED AREAS

GMU 1: **Mendenhall Wetlands State Game Refuge** is closed to hunting, except for waterfowl, snipe, and cranes. No person may use any off-road or all-terrain vehicle, motorcycle, or other motorized vehicle (except a boat) within the refuge. All waterfowl hunters are required to complete Basic Hunter Education. Hunters under 13 may complete Basic Hunter Education or hunt under the supervision of an adult 21 years old or older who has completed Basic Hunter Education. Before hunting in the refuge, all hunters must register online at <http://hunt.alaska.gov> or at ADF&G in Douglas and carry proof of registration in the field (WU001). Check for local zone closures.

September 1-2 (*first two days of season*): Youth-only hunt. Open to hunters 17 years of age or younger only, who are accompanied by a licensed hunter 21 years old or older who has successfully completed Basic Hunter Education. Both the youth and accompanying adult need to register online at <http://hunt.alaska.gov> or at ADF&G in Douglas prior to hunting.

Mendenhall Lake Closed Area is closed to hunting within ¼ mile of Mendenhall Lake, the U.S. Forest Service Mendenhall Glacier Visitor's Center and the center's parking area.

Auke Lake is closed to the taking of waterfowl.

JUNEAU

Date	SEPTEMBER		OCTOBER		NOVEMBER		DECEMBER	
	Start	End	Start	End	Start	End	Start	End
1	5:27	7:57	6:32	6:31	7:43	5:09		
2	5:29	7:54	6:34	6:28	7:45	5:06		
3	5:31	7:51	6:36	6:26	7:48	5:04		
4	5:33	7:48	6:39	6:23	7:50	5:01		
5	5:36	7:46	6:41	6:20	6:52	3:59		
6	5:38	7:43	6:43	6:17	6:55	3:57		
7	5:40	7:40	6:45	6:14	6:57	3:55		
8	5:42	7:37	6:48	6:12	7:00	3:52		
9	5:44	7:34	6:50	6:09	7:02	3:50		
10	5:46	7:31	6:52	6:06	7:04	3:48		
11	5:49	7:29	6:54	6:03	7:07	3:46		
12	5:51	7:26	6:57	6:01	7:09	3:44		
13	5:53	7:23	6:59	5:58	7:11	3:42		
14	5:55	7:20	7:01	5:55	7:14	3:40		
15	5:57	7:17	7:03	5:52	7:16	3:38		
16	5:59	7:14	7:06	5:50	7:18	3:36	8:11	3:06
17	6:02	7:11	7:08	5:47	7:20	3:34	8:12	3:06
18	6:04	7:09	7:10	5:44	7:23	3:32	8:13	3:06
19	6:06	7:06	7:13	5:42	7:25	3:31	8:13	3:06
20	6:08	7:03	7:15	5:39	7:27	3:29	8:14	3:07
21	6:10	7:00	7:17	5:36	7:29	3:27	8:15	3:07
22	6:12	6:57	7:20	5:34	7:32	3:25	8:15	3:08
23	6:15	6:54	7:22	5:31	7:34	3:24	8:15	3:08
24	6:17	6:51	7:24	5:28	7:36	3:22	8:16	3:09
25	6:19	6:48	7:27	5:26	7:38	3:21	8:16	3:10
26	6:21	6:46	7:29	5:23	7:40	3:20	8:16	3:10
27	6:23	6:43	7:31	5:21	7:42	3:18	8:16	3:11
28	6:25	6:40	7:34	5:18	7:44	3:17	8:16	3:12
29	6:28	6:37	7:36	5:16	7:46	3:16	8:16	3:13
30	6:30	6:34	7:38	5:13	7:48	3:14	8:16	3:15
31			7:41	5:11			8:16	3:16


 Season Closed
 December 1-15


SEE PAGE 11 FOR ADJUSTMENTS TO SHOOTING TIMES/HOURS

SITKA

Date	SEPTEMBER		OCTOBER		NOVEMBER		DECEMBER	
	Start	End	Start	End	Start	End	Start	End
1	5:33	7:58	6:35	6:36	7:42	5:17		
2	5:35	7:55	6:37	6:33	7:44	5:15		
3	5:37	7:52	6:39	6:30	7:46	5:12		
4	5:40	7:50	6:41	6:28	7:49	5:10		
5	5:42	7:47	6:43	6:25	6:51	4:08		
6	5:44	7:44	6:45	6:22	6:53	4:06		
7	5:46	7:42	6:48	6:20	6:55	4:04		
8	5:48	7:39	6:50	6:17	6:58	4:02		
9	5:50	7:36	6:52	6:14	7:00	4:00		
10	5:52	7:33	6:54	6:12	7:02	3:58		
11	5:54	7:31	6:56	6:09	7:04	3:56		
12	5:56	7:28	6:58	6:06	7:06	3:54		
13	5:58	7:25	7:00	6:04	7:09	3:52		
14	6:00	7:22	7:02	6:01	7:11	3:50		
15	6:02	7:20	7:05	5:58	7:13	3:48		
16	6:04	7:17	7:07	5:56	7:15	3:46	8:05	3:19
17	6:06	7:14	7:09	5:53	7:17	3:45	8:06	3:19
18	6:08	7:11	7:11	5:51	7:19	3:43	8:07	3:19
19	6:10	7:09	7:13	5:48	7:22	3:41	8:07	3:20
20	6:12	7:06	7:15	5:46	7:24	3:40	8:08	3:20
21	6:14	7:03	7:18	5:43	7:26	3:38	8:08	3:20
22	6:16	7:00	7:20	5:41	7:28	3:37	8:09	3:21
23	6:18	6:58	7:22	5:38	7:30	3:35	8:09	3:22
24	6:20	6:55	7:24	5:36	7:32	3:34	8:10	3:22
25	6:23	6:52	7:26	5:33	7:34	3:32	8:10	3:23
26	6:25	6:49	7:29	5:31	7:36	3:31	8:10	3:24
27	6:27	6:47	7:31	5:28	7:38	3:30	8:10	3:25
28	6:29	6:44	7:33	5:26	7:39	3:29	8:10	3:26
29	6:31	6:41	7:35	5:24	7:41	3:28	8:10	3:27
30	6:33	6:39	7:38	5:21	7:43	3:27	8:10	3:28
31			7:40	5:19			8:10	3:29



 Season Closed

 December 1-15



SEE PAGE 11 FOR ADJUSTMENTS TO SHOOTING TIMES/HOURS

PETERSBURG

Date	SEPTEMBER		OCTOBER		NOVEMBER		DECEMBER	
	Start	End	Start	End	Start	End	Start	End
1	5:24	7:48	6:25	6:26	7:32	5:08		
2	5:26	7:45	6:27	6:24	7:34	5:06		
3	5:28	7:42	6:29	6:21	7:36	5:04		
4	5:30	7:40	6:31	6:18	7:38	5:02		
5	5:33	7:37	6:34	6:16	6:40	3:59		
6	5:35	7:34	6:36	6:13	6:43	3:57		
7	5:37	7:32	6:38	6:10	6:45	3:55		
8	5:39	7:29	6:40	6:08	6:47	3:53		
9	5:41	7:26	6:42	6:05	6:49	3:51		
10	5:43	7:24	6:44	6:02	6:51	3:49		
11	5:45	7:21	6:46	6:00	6:54	3:47		
12	5:47	7:18	6:48	5:57	6:56	3:45		
13	5:49	7:15	6:50	5:55	6:58	3:43		
14	5:51	7:13	6:52	5:52	7:00	3:42		
15	5:53	7:10	6:55	5:49	7:02	3:40		
16	5:55	7:07	6:57	5:47	7:04	3:38	7:54	3:11
17	5:57	7:05	6:59	5:44	7:07	3:36	7:55	3:11
18	5:59	7:02	7:01	5:42	7:09	3:35	7:55	3:12
19	6:01	6:59	7:03	5:39	7:11	3:33	7:56	3:12
20	6:03	6:56	7:05	5:37	7:13	3:31	7:57	3:12
21	6:05	6:54	7:07	5:34	7:15	3:30	7:57	3:13
22	6:07	6:51	7:10	5:32	7:17	3:28	7:58	3:13
23	6:09	6:48	7:12	5:29	7:19	3:27	7:58	3:14
24	6:11	6:45	7:14	5:27	7:21	3:26	7:58	3:14
25	6:13	6:43	7:16	5:25	7:23	3:24	7:59	3:15
26	6:15	6:40	7:18	5:22	7:25	3:23	7:59	3:16
27	6:17	6:37	7:21	5:20	7:27	3:22	7:59	3:17
28	6:19	6:35	7:23	5:17	7:28	3:21	7:59	3:18
29	6:21	6:32	7:25	5:15	7:30	3:20	7:59	3:19
30	6:23	6:29	7:27	5:13	7:32	3:19	7:59	3:20
31			7:29	5:10			7:59	3:21



 Season Closed

 December 1-15



SEE PAGE 11 FOR ADJUSTMENTS TO SHOOTING TIMES/HOURS

KETCHIKAN

Date	SEPTEMBER		OCTOBER		NOVEMBER		DECEMBER	
	Start	End	Start	End	Start	End	Start	End
1	5:22	7:40	6:19	6:22	7:21	5:08		
2	5:24	7:37	6:21	6:20	7:23	5:06		
3	5:26	7:35	6:23	6:17	7:26	5:04		
4	5:28	7:32	6:25	6:14	7:28	5:02		
5	5:30	7:29	6:27	6:12	6:30	4:00		
6	5:32	7:27	6:29	6:09	6:32	3:58		
7	5:34	7:24	6:31	6:07	6:34	3:56		
8	5:35	7:22	6:33	6:04	6:36	3:54		
9	5:37	7:19	6:35	6:02	6:38	3:52		
10	5:39	7:17	6:37	5:59	6:40	3:50		
11	5:41	7:14	6:39	5:57	6:42	3:48		
12	5:43	7:11	6:41	5:54	6:44	3:47		
13	5:45	7:09	6:43	5:52	6:46	3:45		
14	5:47	7:06	6:45	5:49	6:48	3:43		
15	5:49	7:04	6:47	5:47	6:50	3:42		
16	5:51	7:01	6:49	5:45	6:52	3:40	7:38	3:16
17	5:52	6:58	6:51	5:42	6:54	3:38	7:39	3:16
18	5:54	6:56	6:53	5:40	6:56	3:37	7:40	3:16
19	5:56	6:53	6:55	5:37	6:58	3:35	7:41	3:17
20	5:58	6:51	6:57	5:35	7:00	3:34	7:41	3:17
21	6:00	6:48	6:59	5:33	7:02	3:32	7:42	3:18
22	6:02	6:45	7:01	5:30	7:04	3:31	7:42	3:18
23	6:04	6:43	7:03	5:28	7:06	3:30	7:43	3:19
24	6:06	6:40	7:05	5:26	7:07	3:29	7:43	3:19
25	6:08	6:38	7:07	5:23	7:09	3:27	7:43	3:20
26	6:10	6:35	7:09	5:21	7:11	3:26	7:44	3:21
27	6:12	6:32	7:11	5:19	7:13	3:25	7:44	3:22
28	6:13	6:30	7:13	5:17	7:15	3:24	7:44	3:23
29	6:15	6:27	7:15	5:14	7:16	3:23	7:44	3:24
30	6:17	6:25	7:17	5:12	7:18	3:22	7:44	3:25
31			7:19	5:10			7:44	3:26

Season Closed
December 1-15

SEE PAGE 11 FOR ADJUSTMENTS TO SHOOTING TIMES/HOURS

GULF COAST Units 5-7, 9, 10 (Unimak Is. only), 14-16

(See page 11 for definitions)

Sept. 1-Dec. 16

Ducks ¹	8 per day, 24 in possession
Sea Ducks ^{2, 3, 4} Residents.....	10 per day, 20 in possession
Nonresidents.....	8 per day, 20 per season
Canada Geese ^{5, 6}	4 per day, 12 in possession
White-fronted Geese ⁷	4 per day, 12 in possession
White Geese.....	6 per day, 18 in possession
Brant.....	2 per day, 6 in possession
Emperor Geese ⁸ Residents.....	1 per season, by registration permit only
Nonresidents.....	1 per season, by drawing permit only
Tundra Swans.....	NO OPEN SEASON
Snipe.....	8 per day, 24 in possession
Sandhill Cranes.....	2 per day, 6 in possession

Special Bag Limit Restrictions

¹ **DUCKS:** General duck limits may include no more than 2 canvasback per day, 6 in possession.

² **SEA DUCKS:**

- Steller's and spectacled eiders are closed statewide.
- **Residents** may take no more than 6 per day, 12 in possession of harlequin ducks and no more than 6 per day, 12 in possession of long-tailed ducks.
- **Nonresidents** may not take or possess more than 20 sea ducks per season, including no more than 4 each of any sea duck species.

³ Units 7 and 15, limits for residents and nonresidents may include no more than 1 per day, 2 in possession of long-tailed ducks.

⁴ Unit 15C, that portion of Kachemak Bay east of a line from Point Pogibshi to Anchor Point, limits for **residents and nonresidents** may include no more than 2 per day, 4 in possession of harlequin, and no more than 1 per day, 2 in possession of eiders (king or common). In addition, nonresidents may not take or possess more than 4 each of any scoter or merganser species.

⁵ **Units 5 and 6**, Canada goose season is Sept. 28-Dec. 16.

⁶ **Unit 6(D), Middleton Island**, Canada goose hunting is by registration permit only. Possession limit is 1 goose per permit; 1 permit per hunter. Permits available in Anchorage or Cordova.

⁷ **In Unit 9 and Unimak Island portion of Unit 10**, White-fronted goose limits are 6 per day, 18 in possession.

⁸ **EMPEROR GEESE:**

- **Unit 9, Izembek State Game Refuge**, residents may take **one Emperor Goose by registration permit (RO503)**. Permit available online at <http://hunt.alaska.gov/> or at ADF&G offices beginning July 5. Season is Oct. 16-Oct. 31. Harvest quota is 50 birds. Successful hunters must report within 24 hours after the kill.
- **Unit 9 and Unimak Island portion of Unit 10, excluding Izembek State Game Refuge**, residents may take **one Emperor Goose by registration permit (RO504)**. Permit available online at <http://hunt.alaska.gov/> or at ADF&G offices beginning July 5. Season is Sept. 1-Dec. 16. Harvest quota is 100 birds shared with Unit 17. Successful hunters must report within 72 hours after the kill
- Nonresident emperor goose hunters see page 12.

Trumpeter swans are closed statewide.

RESTRICTED OR CLOSED AREAS

GMU 7:

Portage Glacier Closed Area is closed to the discharge of firearms within 150 yards of all developed facilities on Forest Service lands south of Portage Creek.

GMU 14:

Anchorage Management Area consists of all Cook Inlet drainages south of the Joint Base Elmendorf-Richardson military reservation and north of and including Rainbow Creek. Small game and waterfowl may be taken only by falconry, except waterfowl may not be taken in the Ship Creek drainage west of Post Road.

Anchorage Coastal Wildlife Refuge consists of all public land and water south and west of and adjacent to the toe of the bluff from Point Woronzof southeasterly to Potter Creek. Hunting is closed in that portion between the Alaska Railroad and the Old Seward Highway (**Potter Marsh**).

On the remainder of the refuge, hunting is permitted only for small game by archery, crossbow, falconry, and shotgun. However, shotgun hunting is prohibited in that portion designated by signs between the radio tower at Kincaid Park motocross area and Furrow Creek. All hunters on the refuge must have completed Basic Hunter Education and carry an annual registration permit (WU002) issued by ADF&G. Motorized vehicles are prohibited, except by permit.

Eklutna Lake Management Area: Drainages of Eklutna River and Lake upstream from the Glenn Highway, excluding those drainages flowing into the East Fork of Eklutna River upstream from the bridge above the lake and Thunderbird Creek, are open to hunting for small game by archery or falconry.

Chugach State Park Management Area: That portion of the park outside of the Eagle River, Anchorage, and Eklutna Management Areas is open to hunting under regulations governing Unit 14(C), except that small game hunting is prohibited in the Tokle Creek drainage (Arctic Valley Ski Area).

Birchwood Management Area: All lands bounded on the south and west by Eagle River and the Joint Base Elmendorf-Richardson military reservation, on the east by the Old Glenn Highway, and on the north by Peters Creek, are open to hunting for small game, but only by shotgun, archery, crossbow, or falconry north and west of the Alaska Railroad.

Finger Lake west of Palmer is open to the hunting of waterfowl only by archery with flu-flu arrows or falconry.

Susitna Flats State Game Refuge in Units 14 and 16: restrictions regarding use of motorized vehicles and aircraft (for details, see refuge General Permit requirements at www.refuges.adfg.alaska.gov or call (907) 861-3200, (907) 861-2112): a) Refuge Lands: the use off-road vehicles are prohibited except that those weighing less than 1,000 lbs. GVW (including ATVs and snowmachines) may be used on refuge lands Nov 9 – Mar 31 provided there is at least a 12-inch snow cover and sufficient ground frost to prevent penetration of or disturbance to the soil surface or plant roots. If operating on frozen waterways the ice cover must be of sufficient thickness to support the weight-bearing load of the off-road vehicle. If operating on the Enstar Gas Pipeline right-of-way, or the marked trails to Figure Eight Lake or Flat Horn Lake, the 12-inch snow cover requirement is waived but there must be sufficient ground frost to prevent penetration of or disturbance to the soil surface or plant roots. b) Aircraft: Landing is prohibited Apr 1 – May 15 in the High Density Spring Waterfowl Staging Area (defined roughly as the coastal marsh seaward of the forested bluff edge).

Palmer Hay Flats State Game Refuge - has restrictions regarding use of motorized vehicles, boats and aircraft (for details, see refuge General Permit requirements at www.refuges.adfg.alaska.gov or call (907) 861-3200, (907) 861-2112):a) Glenn Highway: No off-road vehicles (including ATVs and snowmachines) may be used within ½ mile of the Glenn Hwy but are allowed on the frozen surface of the Knik River and Wasilla Creek as discussed below, and on the Rabbit Slough access road. b) Refuge Lands: with the exception noted above, off-road vehicles (including ATVs and snowmachines) weighing less than 1,000 lbs. GVW may only be used on refuge lands Nov 9 – Mar 31 provided there is at least a 12-inch snow cover and sufficient ground frost to prevent penetration of or disturbance to the soil surface or plant roots. If operating on the frozen surface of the Knik River or Wasilla Creek, the ice cover must be of sufficient thickness to support the weight-bearing load of the off-road vehicle. c) Cottonwood Creek Trail: may be open to off-road vehicles from late-Aug – Nov 15 only if ADF&G determines trail conditions warrant use. When open, trail is restricted to vehicles less than 1,000 lbs. GVW and travel is only permitted on the marked trail from the western edge of the refuge along the north bank of Palmer Slough to a sign at the end of the trail. All trail users are subject to Special Area Permit requirements. d) Motorized watercraft: are allowed year-round on the Knik and Matanuska Rivers, and on Knik Arm. On Wasilla Creek (Rabbit Slough), motorized watercraft may be used year-round, except that on weekends from July 15 - Aug 15 motorized watercraft capable of producing more than 42 lbs. of thrust or 3 hp are prohibited. On all other refuge waters, you may use a motorized watercraft with a motor of 20 hp or less only from Aug 16 - Mar 31. e) Aircraft: landing is prohibited from Apr 1 - Nov 9.

Goose Bay State Game Refuge: the use of off-road vehicles (including snowmachines and ATVs) is prohibited except that the use of vehicles off-road weighing less than 1,000 lbs GVW can be used on all refuge lands from Nov 9 - Mar 31 only when there is at least a 12-inch snow cover and sufficient ground frost to prevent penetration of or disturbance to the soil surface or plant roots. If operating on frozen waterways the ice cover must be of sufficient thickness to support the weight-bearing load of the off-road vehicle. For details, see refuge General Permit requirements at www.refuges.adfg.alaska.gov or call (907) 861-3200, (907) 861-2112.

GMU 15:

Moose River Closed Area, on and within ¼ mile of the Moose River between the Kenai National Wildlife Refuge boundary and Sterling Highway, is closed to waterfowl hunting. Skilak Loop Management Area is open to small game hunting by bow and arrow during October 1 - March 1. Youth hunters 17 years old and younger may hunt small game with .22 caliber rimfire firearms or shotguns only from August 10 through March 31, only in the western portion of the area, and only when accompanied by a licensed hunter at least 21 years old. The youth hunter or the accompanying hunter must have successfully completed Basic Hunter Education.

GMU 16:

Susitna Flats State Game Refuge: See restrictions under GMU 14 for details.

Trading Bay State Game Refuge and Redoubt Bay Critical Habitat Area: the use of off-road vehicles is prohibited except that those weighing less than 1,000 lbs. dry vehicle weight (including ATVs and snowmachines) may be used on refuge lands Nov 9 - Mar 31 provided there is at least a 12-inch snow cover and sufficient ground frost to prevent penetration of or disturbance to the soil surface or plant roots. If operating on frozen waterways the ice cover must be of sufficient thickness to support the weight-bearing load of the off-road vehicle. For details, see refuge General Permit requirements at:

www.refuges.adfg.alaska.gov or call (907) 267-2342, (907) 861-2112.

CORDOVA

Date	SEPTEMBER		OCTOBER		NOVEMBER		DECEMBER	
	Start	End	Start	End	Start	End	Start	End
1	6:07	8:48	7:19	7:15	8:38	5:44	8:53	3:41
2	6:09	8:45	7:21	7:12	8:40	5:42	8:55	3:40
3	6:11	8:42	7:24	7:09	8:43	5:39	8:57	3:38
4	6:14	8:38	7:26	7:06	8:46	5:36	8:59	3:37
5	6:16	8:35	7:29	7:03	7:48	4:34	9:01	3:36
6	6:19	8:32	7:31	7:00	7:51	4:31	9:02	3:35
7	6:21	8:29	7:34	6:57	7:54	4:29	9:04	3:35
8	6:24	8:26	7:36	6:54	7:56	4:26	9:06	3:34
9	6:26	8:23	7:39	6:50	7:59	4:24	9:08	3:33
10	6:28	8:20	7:41	6:47	8:01	4:21	9:09	3:32
11	6:31	8:17	7:44	6:44	8:04	4:19	9:11	3:32
12	6:33	8:14	7:46	6:41	8:07	4:17	9:12	3:31
13	6:36	8:11	7:49	6:38	8:09	4:14	9:13	3:31
14	6:38	8:08	7:51	6:36	8:12	4:12	9:14	3:31
15	6:40	8:04	7:54	6:33	8:15	4:10	9:16	3:31
16	6:43	8:01	7:56	6:30	8:17	4:08	9:17	3:31
17	6:45	7:58	7:59	6:27	8:20	4:06	Season Closed	
18	6:48	7:55	8:01	6:24	8:22	4:03		
19	6:50	7:52	8:04	6:21	8:25	4:01		
20	6:52	7:49	8:06	6:18	8:27	3:59		
21	6:55	7:46	8:09	6:15	8:30	3:57		
22	6:57	7:43	8:12	6:12	8:32	3:55		
23	7:00	7:40	8:14	6:09	8:35	3:54		
24	7:02	7:37	8:17	6:06	8:37	3:52		
25	7:04	7:33	8:19	6:04	8:39	3:50		
26	7:07	7:30	8:22	6:01	8:42	3:48		
27	7:09	7:27	8:25	5:58	8:44	3:47		
28	7:12	7:24	8:27	5:55	8:46	3:45		
29	7:14	7:21	8:30	5:52	8:48	3:44		
30	7:17	7:18	8:32	5:50	8:51	3:42		
31			8:35	5:47				

SEE PAGE 11 FOR ADJUSTMENTS TO SHOOTING TIMES/HOURS

ANCHORAGE

Date	SEPTEMBER		OCTOBER		NOVEMBER		DECEMBER	
	Start	End	Start	End	Start	End	Start	End
1	6:21	9:06	7:36	7:31	8:57	5:58	9:15	3:51
2	6:24	9:03	7:39	7:28	9:00	5:55	9:18	3:50
3	6:26	9:00	7:41	7:25	9:03	5:52	9:20	3:49
4	6:29	8:57	7:44	7:21	9:06	5:50	9:22	3:48
5	6:31	8:53	7:46	7:18	8:08	4:47	9:24	3:46
6	6:34	8:50	7:49	7:15	8:11	4:44	9:26	3:45
7	6:36	8:47	7:51	7:12	8:14	4:42	9:27	3:44
8	6:39	8:44	7:54	7:09	8:17	4:39	9:29	3:44
9	6:41	8:41	7:56	7:06	8:19	4:37	9:31	3:43
10	6:44	8:38	7:59	7:03	8:22	4:34	9:32	3:42
11	6:46	8:34	8:02	7:00	8:25	4:32	9:34	3:42
12	6:49	8:31	8:04	6:57	8:28	4:29	9:35	3:41
13	6:51	8:28	8:07	6:54	8:30	4:27	9:37	3:41
14	6:54	8:25	8:09	6:50	8:33	4:24	9:38	3:40
15	6:56	8:22	8:12	6:47	8:36	4:22	9:39	3:40
16	6:59	8:19	8:15	6:44	8:38	4:20	9:40	3:40
17	7:01	8:15	8:17	6:41	8:41	4:17	Season Closed	
18	7:04	8:12	8:20	6:38	8:44	4:15		
19	7:06	8:09	8:22	6:35	8:46	4:13		
20	7:09	8:06	8:25	6:32	8:49	4:11		
21	7:11	8:03	8:28	6:29	8:51	4:09		
22	7:14	7:59	8:30	6:26	8:54	4:07		
23	7:16	7:56	8:33	6:23	8:57	4:05		
24	7:19	7:53	8:36	6:21	8:59	4:03		
25	7:21	7:50	8:38	6:18	9:02	4:01		
26	7:24	7:47	8:41	6:15	9:04	3:59		
27	7:26	7:44	8:44	6:12	9:06	3:58		
28	7:29	7:40	8:47	6:09	9:09	3:56		
29	7:31	7:37	8:49	6:06	9:11	3:54		
30	7:34	7:34	8:52	6:03	9:13	3:53		
31			8:55	6:01				

SEE PAGE 11 FOR ADJUSTMENTS TO SHOOTING TIMES/HOURS

KING SALMON

Date	SEPTEMBER		OCTOBER		NOVEMBER		DECEMBER	
	Start	End	Start	End	Start	End	Start	End
1	6:55	9:27	8:01	8:00	9:14	6:36	9:22	4:39
2	6:57	9:24	8:04	7:57	9:16	6:33	9:23	4:38
3	7:00	9:21	8:06	7:54	9:18	6:31	9:25	4:37
4	7:02	9:18	8:08	7:51	9:21	6:29	9:27	4:36
5	7:04	9:15	8:10	7:48	8:23	5:26	9:29	4:36
6	7:06	9:12	8:13	7:46	8:26	5:24	9:30	4:35
7	7:08	9:09	8:15	7:43	8:28	5:22	9:32	4:34
8	7:11	9:07	8:17	7:40	8:30	5:19	9:33	4:34
9	7:13	9:04	8:20	7:37	8:33	5:17	9:35	4:33
10	7:15	9:01	8:22	7:34	8:35	5:15	9:36	4:32
11	7:17	8:58	8:24	7:31	8:38	5:13	9:38	4:32
12	7:19	8:55	8:26	7:29	8:40	5:11	9:39	4:32
13	7:22	8:52	8:29	7:26	8:42	5:09	9:40	4:32
14	7:24	8:49	8:31	7:23	8:45	5:07	9:41	4:31
15	7:26	8:46	8:33	7:20	8:47	5:05	9:42	4:31
16	7:28	8:43	8:36	7:18	8:49	5:03	9:43	4:31
17	7:30	8:40	8:38	7:15	8:52	5:01	Season Closed	
18	7:33	8:38	8:40	7:12	8:54	4:59		
19	7:35	8:35	8:43	7:09	8:56	4:57		
20	7:37	8:32	8:45	7:07	8:59	4:55		
21	7:39	8:29	8:47	7:04	9:01	4:54		
22	7:41	8:26	8:50	7:01	9:03	4:52		
23	7:44	8:23	8:52	6:59	9:05	4:50		
24	7:46	8:20	8:54	6:56	9:07	4:49		
25	7:48	8:17	8:57	6:53	9:10	4:47		
26	7:50	8:14	8:59	6:51	9:12	4:46		
27	7:53	8:11	9:02	6:48	9:14	4:44		
28	7:55	8:08	9:04	6:46	9:16	4:43		
29	7:57	8:06	9:06	6:43	9:18	4:42		
30	7:59	8:03	9:09	6:41	9:20	4:41		
31			9:11	6:38				

SEE PAGE 11 FOR ADJUSTMENTS TO SHOOTING TIMES/HOURS

COLD BAY

Date	SEPTEMBER		OCTOBER		NOVEMBER		DECEMBER	
	Start	End	Start	End	Start	End	Start	End
1	7:27	9:43	8:24	8:26	9:25	7:13	9:23	5:26
2	7:29	9:41	8:25	8:24	9:27	7:10	9:25	5:26
3	7:31	9:38	8:27	8:21	9:30	7:08	9:26	5:25
4	7:33	9:36	8:29	8:19	9:32	7:06	9:28	5:24
5	7:34	9:33	8:31	8:16	8:34	6:04	9:29	5:24
6	7:36	9:31	8:33	8:14	8:36	6:02	9:31	5:23
7	7:38	9:28	8:35	8:11	8:38	6:01	9:32	5:22
8	7:40	9:26	8:37	8:09	8:40	5:59	9:33	5:22
9	7:42	9:23	8:39	8:06	8:42	5:57	9:35	5:22
10	7:44	9:20	8:41	8:04	8:44	5:55	9:36	5:21
11	7:46	9:18	8:43	8:01	8:46	5:53	9:37	5:21
12	7:48	9:15	8:45	7:59	8:48	5:51	9:38	5:21
13	7:50	9:13	8:47	7:56	8:50	5:50	9:39	5:21
14	7:51	9:10	8:49	7:54	8:52	5:48	9:40	5:21
15	7:53	9:08	8:51	7:51	8:54	5:46	9:41	5:21
16	7:55	9:05	8:53	7:49	8:56	5:45	9:42	5:21
17	7:57	9:02	8:55	7:46	8:58	5:43	Season Closed	
18	7:59	9:00	8:57	7:44	9:00	5:42		
19	8:01	8:57	8:59	7:42	9:02	5:40		
20	8:03	8:55	9:01	7:39	9:04	5:39		
21	8:05	8:52	9:03	7:37	9:06	5:37		
22	8:06	8:49	9:05	7:35	9:08	5:36		
23	8:08	8:47	9:07	7:32	9:09	5:35		
24	8:10	8:44	9:09	7:30	9:11	5:33		
25	8:12	8:42	9:11	7:28	9:13	5:32		
26	8:14	8:39	9:13	7:26	9:15	5:31		
27	8:16	8:37	9:15	7:23	9:17	5:30		
28	8:18	8:34	9:17	7:21	9:18	5:29		
29	8:20	8:31	9:19	7:19	9:20	5:28		
30	8:22	8:29	9:21	7:17	9:22	5:27		
31			9:23	7:15				

SEE PAGE 11 FOR ADJUSTMENTS TO SHOOTING TIMES/HOURS

PRIBILOF/ALEUTIAN Unit 10 (except Unimak Is.)

(See page 11 for definitions)

Oct. 8-Jan. 22

Ducks ¹	7 per day, 21 in possession
Sea Ducks ² Residents.....	10 per day, 20 in possession
Nonresidents.....	7 per day, 20 per season
Canada Geese.....	6 per day, 18 in possession
White-fronted Geese.....	6 per day, 18 in possession
White Geese.....	6 per day, 18 in possession
Brant.....	2 per day, 6 in possession
Emperor Geese ³ Residents.....	1 per season, by registration permit only
Nonresidents.....	1 per season, by drawing permit only
Tundra Swans.....	NO OPEN SEASON
Snipe.....	8 per day, 24 in possession
Sandhill Cranes.....	2 per day, 6 in possession

Special Bag Limit Restrictions

¹ **DUCKS:** General duck limits may include no more than 2 canvasback per day, 6 in possession.

² **SEA DUCKS:**

- Steller's and spectacled eiders are closed statewide.
- **Residents** may take no more than 6 per day, 12 in possession of harlequin ducks and no more than 6 per day, 12 in possession of long-tailed ducks.
- **Nonresidents** may not take or possess more than 20 sea ducks per season, including no more than 4 each of any sea duck species.

³ **EMPEROR GEESE:**

- **Unit 10, excluding Unimak Island**, residents may take **one Emperor Goose by registration permit (R0502)**. Permit available online at <http://hunt.alaska.gov/> or at ADF&G offices beginning July 5. Season is Oct. 8-Jan. 22. Harvest quota is 125 birds. Successful hunters must report within 72 hours after the kill.
- Nonresident emperor goose hunters see page 12.

Trumpeter swans are closed statewide.

ADAK

Date	OCTOBER		NOVEMBER		DECEMBER		JANUARY	
	Start	End	Start	End	Start	End	Start	End
1			9:11	7:18	9:02	5:39	9:24	5:46
2			9:13	7:16	9:03	5:39	9:24	5:47
3			9:15	7:15	9:05	5:38	9:24	5:49
4			9:17	7:13	9:06	5:38	9:24	5:50
5			8:19	6:11	9:07	5:37	9:23	5:51
6			8:20	6:09	9:09	5:37	9:23	5:52
7			8:22	6:08	9:10	5:36	9:22	5:54
8	8:29	8:08	8:24	6:06	9:11	5:36	9:22	5:55
9	8:31	8:06	8:26	6:04	9:12	5:36	9:21	5:56
10	8:33	8:03	8:27	6:03	9:13	5:36	9:21	5:58
11	8:35	8:01	8:29	6:01	9:14	5:36	9:20	5:59
12	8:36	7:59	8:31	6:00	9:15	5:36	9:20	6:01
13	8:38	7:57	8:33	5:58	9:16	5:36	9:19	6:02
14	8:40	7:55	8:35	5:57	9:17	5:36	9:18	6:04
15	8:41	7:52	8:36	5:56	9:18	5:36	9:17	6:05
16	8:43	7:50	8:38	5:54	9:19	5:36	9:16	6:07
17	8:45	7:48	8:40	5:53	9:19	5:36	9:15	6:08
18	8:47	7:46	8:41	5:52	9:20	5:36	9:14	6:10
19	8:48	7:44	8:43	5:50	9:21	5:37	9:13	6:12
20	8:50	7:42	8:45	5:49	9:21	5:37	9:12	6:13
21	8:52	7:40	8:46	5:48	9:22	5:38	9:11	6:15
22	8:54	7:38	8:48	5:47	9:22	5:38	9:10	6:17
23	8:55	7:36	8:50	5:46	9:23	5:39	Season Closed	
24	8:57	7:34	8:51	5:45	9:23	5:39		
25	8:59	7:32	8:53	5:44	9:24	5:40		
26	9:01	7:30	8:54	5:43	9:24	5:41		
27	9:02	7:28	8:56	5:42	9:24	5:42		
28	9:04	7:26	8:58	5:41	9:24	5:43		
29	9:06	7:24	8:59	5:41	9:24	5:43		
30	9:08	7:22	9:00	5:40	9:24	5:44		
31	9:10	7:20			9:24	5:45		

SEE PAGE 11 FOR ADJUSTMENTS TO SHOOTING TIMES/HOURS

ST. PAUL

Date	OCTOBER		NOVEMBER		DECEMBER		JANUARY	
	Start	End	Start	End	Start	End	Start	End
1			10:02	7:36	10:05	5:45	10:30	5:50
2			10:04	7:34	10:07	5:44	10:30	5:51
3			10:07	7:32	10:09	5:43	10:29	5:52
4			10:09	7:29	10:10	5:42	10:29	5:54
5			9:11	6:27	10:12	5:41	10:28	5:55
6			9:13	6:25	10:13	5:41	10:28	5:57
7			9:16	6:23	10:15	5:40	10:27	5:58
8	9:10	8:36	9:18	6:21	10:16	5:40	10:26	6:00
9	9:12	8:34	9:20	6:19	10:18	5:39	10:25	6:01
10	9:14	8:31	9:22	6:17	10:19	5:39	10:24	6:03
11	9:16	8:28	9:25	6:15	10:20	5:39	10:23	6:05
12	9:18	8:26	9:27	6:13	10:21	5:38	10:22	6:07
13	9:20	8:23	9:29	6:11	10:22	5:38	10:21	6:09
14	9:23	8:20	9:31	6:09	10:23	5:38	10:20	6:11
15	9:25	8:18	9:33	6:07	10:24	5:38	10:19	6:12
16	9:27	8:15	9:36	6:06	10:25	5:38	10:18	6:14
17	9:29	8:13	9:38	6:04	10:26	5:38	10:16	6:16
18	9:31	8:10	9:40	6:02	10:27	5:39	10:15	6:18
19	9:33	8:08	9:42	6:01	10:28	5:39	10:14	6:21
20	9:36	8:05	9:44	5:59	10:28	5:39	10:12	6:23
21	9:38	8:03	9:46	5:57	10:29	5:40	10:11	6:25
22	9:40	8:00	9:48	5:56	10:29	5:40	10:09	6:27
23	9:42	7:58	9:50	5:54	10:30	5:41	Season Closed	
24	9:44	7:55	9:52	5:53	10:30	5:42		
25	9:47	7:53	9:54	5:52	10:30	5:42		
26	9:49	7:50	9:56	5:50	10:30	5:43		
27	9:51	7:48	9:58	5:49	10:31	5:44		
28	9:53	7:45	10:00	5:48	10:31	5:45		
29	9:56	7:43	10:02	5:47	10:31	5:46		
30	9:58	7:41	10:03	5:46	10:30	5:47		
31	10:00	7:38			10:30	5:48		

SEE PAGE 11 FOR ADJUSTMENTS TO SHOOTING TIMES/HOURS

KODIAK Unit 8 (See page 11 for definitions)

Oct. 8-Jan. 22

Ducks ¹	7 per day, 21 in possession
Sea Ducks ² Residents.....	10 per day, 20 in possession
Nonresidents.....	7 per day, 20 per season
Canada Geese.....	1 per day, 2 in possession
White-fronted Geese.....	4 per day, 12 in possession
White Geese.....	6 per day, 18 in possession
Brant.....	2 per day, 6 in possession
Emperor Geese ³ Residents.....	1 per season, by registration permit only
Nonresidents.....	1 per season, by drawing permit only
Tundra Swans.....	NO OPEN SEASON
Snipe.....	8 per day, 24 in possession
Sandhill Cranes.....	2 per day, 6 in possession

Special Bag Limit Restrictions

¹ **DUCKS:** General duck limits may include no more than 2 canvasback per day, 6 in possession.

² **SEA DUCKS:**

- Steller's and spectacled eiders are closed statewide.
- **Residents** may take no more than 6 per day, 12 in possession of harlequin ducks and no more than 6 per day, 12 in possession of long-tailed ducks.
- **Nonresidents** may not take or possess more than 20 sea ducks per season, including no more than 4 each of any sea duck species.

³ **EMPEROR GEESE:**

- **Unit 8**, residents may take **one Emperor Goose by registration permit (RO501)**. Permit available online at <http://hunt.alaska.gov/> or at ADF&G offices beginning July 5. Season is Oct. 8-Jan. 22. Harvest quota is 150 birds. Successful hunters must report within 24 hours after the kill.
- Nonresident emperor goose hunters see page 12.

Trumpeter swans are closed statewide.

RESTRICTED OR CLOSED AREAS

Kodiak Roaded Area is closed to emperor goose hunting. Roaded area closure boundaries: all lands and water (including exposed tidelands) east of a line extending from Crag Point in the north to the west end of Saltery Cove in the south and all lands and water south of a line extending from Termination Point along the north side of Cascade Lake extending to Anton Larsen Bay. Marine waters adjacent to the closed area are closed to harvest within 500 feet from the water's edge. The offshore islands are open to harvest, for example: Woody, Long, Gull, and Puffin islands.

KODIAK

Date	OCTOBER		NOVEMBER		DECEMBER		JANUARY	
	Start	End	Start	End	Start	End	Start	End
1			8:53	6:22	8:58	4:29	9:23	4:33
2			8:55	6:20	9:00	4:28	9:23	4:34
3			8:58	6:18	9:02	4:27	9:23	4:36
4			9:00	6:15	9:03	4:26	9:22	4:37
5			8:02	5:13	9:05	4:25	9:22	4:39
6			8:05	5:11	9:06	4:25	9:21	4:40
7			8:07	5:09	9:08	4:24	9:20	4:42
8	7:59	7:24	8:09	5:07	9:09	4:23	9:19	4:44
9	8:01	7:21	8:12	5:04	9:11	4:23	9:18	4:45
10	8:03	7:19	8:14	5:02	9:12	4:23	9:17	4:47
11	8:06	7:16	8:16	5:00	9:13	4:22	9:16	4:49
12	8:08	7:13	8:18	4:58	9:15	4:22	9:15	4:51
13	8:10	7:11	8:21	4:56	9:16	4:22	9:14	4:53
14	8:12	7:08	8:23	4:54	9:17	4:22	9:13	4:55
15	8:14	7:05	8:25	4:53	9:18	4:22	9:12	4:57
16	8:17	7:03	8:27	4:51	9:19	4:22	9:10	4:59
17	8:19	7:00	8:30	4:49	9:20	4:22	9:09	5:01
18	8:21	6:57	8:32	4:47	9:21	4:22	9:08	5:03
19	8:23	6:55	8:34	4:45	9:21	4:22	9:06	5:05
20	8:26	6:52	8:36	4:44	9:22	4:23	9:05	5:07
21	8:28	6:49	8:38	4:42	9:22	4:23	9:03	5:09
22	8:30	6:47	8:40	4:41	9:23	4:24	9:01	5:12
23	8:32	6:44	8:43	4:39	9:23	4:24	Season Closed	
24	8:35	6:42	8:45	4:38	9:24	4:25		
25	8:37	6:39	8:47	4:36	9:24	4:26		
26	8:39	6:37	8:49	4:35	9:24	4:27		
27	8:42	6:34	8:51	4:33	9:24	4:27		
28	8:44	6:32	8:53	4:32	9:24	4:28		
29	8:46	6:29	8:54	4:31	9:24	4:29		
30	8:48	6:27	8:56	4:30	9:24	4:31		
31	8:51	6:25			9:24	4:32		

SEE PAGE 11 FOR ADJUSTMENTS TO SHOOTING TIMES/HOURS

NORTH Units 11-13, 17-26

(See page 11 for definitions)

Sept. 1-Dec. 16

Ducks ¹	10 per day, 30 in possession
Sea Ducks ² Residents.....	10 per day, 20 in possession
Nonresidents.....	10 per day, 20 per season
Canada Geese.....	4 per day, 12 in possession
White-fronted Geese ^{3,4}	4 per day, 12 in possession
White Geese.....	6 per day, 18 in possession
Brant.....	2 per day, 6 in possession
Emperor Geese ⁷ Residents.....	1 per season, by registration permit only
Nonresidents.....	1 per season, by drawing permit only
Tundra Swans ⁵	Units 17, 18, 22, 23 only
Snipe.....	8 per day, 24 in possession
Sandhill Cranes ⁶	3 per day, 9 in possession

Special Bag Limit Restrictions

¹ **DUCKS:** General duck limits may include no more than 2 canvasback per day, 6 in possession.

² **SEA DUCKS:**

- Steller's and spectacled eiders are closed statewide.
- **Residents** may take no more than 6 per day, 12 in possession of harlequin ducks and no more than 6 per day, 12 in possession of long-tailed ducks.
- **Nonresidents** may not take or possess more than 20 sea ducks per season, including no more than 4 each of any sea duck species.

³ In Unit 17, White-fronted goose limits are 6 per day, 18 in possession.

⁴ In Unit 18, White-fronted goose limits are 10 per day, 30 in possession.

⁵ **TUNDRA SWANS:**

- **In Unit 17**, permit holders may take **three Tundra Swans by registration permit (RT417)**. Permit available online at <http://hunt.alaska.gov/> or at ADF&G offices beginning July 5. Season is Sept. 1-Oct 31.
- **In Unit 18**, permit holders may take **three Tundra Swans by registration permit (RT518)**. Permit available online at <http://hunt.alaska.gov/> or at ADF&G offices beginning July 5. Season is Sept. 1-Oct 31.
- **In Unit 22**, permit holders may take **three Tundra Swans by registration permit (RT522)**. Permit available online at <http://hunt.alaska.gov/> or at ADF&G offices beginning July 5. Season is Sept. 1-Oct 31.
- **In Unit 23**, permit holders may take **three Tundra Swans by registration permit (RT523)**. Permit available online at <http://hunt.alaska.gov/> or at ADF&G offices beginning July 5 Season is Sept. 1-Oct 31.

⁶ **SANDHILL CRANES:** In Unit 17 bag limits for sandhill cranes are 2 per day, 6 in possession.

⁷ **EMPEROR GEESE:**

- **In Unit 17**, residents may take **one Emperor Goose by registration permit (RO504)**. Permit available online at <http://hunt.alaska.gov/> or at ADF&G offices beginning July 5. Season is Sept. 1-Dec. 16. Harvest quota is 100 birds shared with Unit 9. Successful hunters must report within 72 hours after the kill.
- **In Unit 18**, residents may take **one Emperor Goose by registration permit (RO505)**. Permit available online at <http://hunt.alaska.gov/> or at ADF&G offices beginning July 5. Season is Sept. 1-Dec. 16. Harvest quota is 25 birds. Successful hunters must report within 72 hours after the kill.
- **In Unit 22**, residents may take **one Emperor Goose by registration permit (RO506)**. Permit available online at <http://hunt.alaska.gov/> or at ADF&G offices beginning July 5. Season is Sept. 1-Dec. 16. Harvest quota is 25 birds. Successful hunters must report within 72 hours after the kill.
- **In Unit 23**, residents may take **one Emperor Goose by registration permit (RO507)**. Permit available online at <http://hunt.alaska.gov/> or at ADF&G offices beginning July 5. Season is Sept. 1-Dec. 16. Harvest quota is 25 birds. Successful hunters must report within 72 hours after the kill.
- Nonresident emperor goose hunters see page 12.

Trumpeter swans are closed statewide.

RESTRICTED OR CLOSED AREAS

GMU 20:

Creamer's Field Migratory Waterfowl Refuge is open to hunting and trapping only by advance registration at ADF&G in Fairbanks.

Healy-Lignite Management Area is open to hunting by bow and arrow or falconry only.

Fairbanks Management Area, Badger Slough: waterfowl can only be taken by falconry or archery with flu-flu arrows.

GMU 20, 24, 25, 26:

The **Dalton Highway Corridor Management Area** (lands within five miles of the right-of-way of the Dalton Highway) is closed to hunting, except that big game, small game, and fur animals may be taken by bow and arrow. Small game may also be taken by falconry. No motorized vehicle may be used to transport hunters, their hunting gear, or game, except that licensed highway vehicles may be used on designated public roads; aircraft and boats may be used in the corridor; and snowmachines may be used to cross the corridor to access lands on the other side of the Management Area. Any hunter traveling on the Dalton Highway must stop at any check station operated by ADF&G within the Management Area.

FAIRBANKS

Date	SEPTEMBER		OCTOBER		NOVEMBER		DECEMBER	
	Start	End	Start	End	Start	End	Start	End
1	6:01	9:09	7:31	7:19	9:09	5:29	9:49	3:00
2	6:04	9:05	7:34	7:15	9:12	5:26	9:52	2:58
3	6:07	9:01	7:37	7:12	9:15	5:22	9:55	2:56
4	6:10	8:58	7:40	7:08	9:19	5:19	9:58	2:54
5	6:13	8:54	7:43	7:04	8:22	4:16	10:00	2:52
6	6:16	8:50	7:46	7:01	8:25	4:12	10:03	2:50
7	6:19	8:47	7:49	6:57	8:29	4:09	10:06	2:49
8	6:22	8:43	7:52	6:54	8:32	4:06	10:08	2:47
9	6:25	8:39	7:55	6:50	8:36	4:03	10:10	2:46
10	6:28	8:36	7:58	6:46	8:39	3:59	10:13	2:44
11	6:31	8:32	8:01	6:43	8:43	3:56	10:15	2:43
12	6:34	8:28	8:04	6:39	8:46	3:53	10:17	2:42
13	6:37	8:25	8:07	6:36	8:49	3:50	10:19	2:41
14	6:40	8:21	8:10	6:32	8:53	3:47	10:20	2:41
15	6:43	8:17	8:13	6:28	8:56	3:44	10:22	2:40
16	6:46	8:14	8:17	6:25	9:00	3:41	10:23	2:39
17	6:49	8:10	8:20	6:21	9:03	3:38	Season Closed	
18	6:52	8:06	8:23	6:18	9:07	3:35		
19	6:55	8:03	8:26	6:14	9:10	3:32		
20	6:58	7:59	8:29	6:11	9:13	3:29		
21	7:01	7:55	8:32	6:07	9:17	3:26		
22	7:04	7:52	8:36	6:04	9:20	3:23		
23	7:07	7:48	8:39	6:00	9:23	3:20		
24	7:10	7:44	8:42	5:57	9:27	3:18		
25	7:13	7:41	8:45	5:53	9:30	3:15		
26	7:16	7:37	8:49	5:50	9:33	3:12		
27	7:19	7:33	8:52	5:46	9:37	3:10		
28	7:22	7:30	8:55	5:43	9:40	3:07		
29	7:25	7:26	8:59	5:39	9:43	3:05		
30	7:28	7:22	9:02	5:36	9:46	3:03		
31			9:05	5:33				

SEE PAGE 11 FOR ADJUSTMENTS TO SHOOTING TIMES/HOURS

NORTHWAY

Date	SEPTEMBER		OCTOBER		NOVEMBER		DECEMBER	
	Start	End	Start	End	Start	End	Start	End
1	5:44	8:39	7:06	6:58	8:34	5:17	9:01	3:02
2	5:47	8:36	7:08	6:54	8:37	5:14	9:04	3:00
3	5:50	8:33	7:11	6:51	8:40	5:11	9:06	2:58
4	5:52	8:29	7:14	6:48	8:43	5:08	9:09	2:57
5	5:55	8:26	7:17	6:44	7:46	4:05	9:11	2:56
6	5:58	8:22	7:19	6:41	7:49	4:02	9:13	2:54
7	6:01	8:19	7:22	6:37	7:52	3:59	9:15	2:53
8	6:03	8:16	7:25	6:34	7:55	3:56	9:17	2:52
9	6:06	8:12	7:28	6:31	7:59	3:54	9:19	2:51
10	6:09	8:09	7:31	6:28	8:02	3:51	9:21	2:50
11	6:11	8:05	7:33	6:24	8:05	3:48	9:23	2:49
12	6:14	8:02	7:36	6:21	8:08	3:45	9:24	2:48
13	6:17	7:59	7:39	6:18	8:11	3:43	9:26	2:48
14	6:20	7:55	7:42	6:14	8:14	3:40	9:27	2:47
15	6:22	7:52	7:45	6:11	8:17	3:37	9:29	2:47
16	6:25	7:48	7:47	6:08	8:20	3:35	9:30	2:47
17	6:28	7:45	7:50	6:04	8:23	3:32	Season Closed	
18	6:30	7:42	7:53	6:01	8:26	3:30		
19	6:33	7:38	7:56	5:58	8:28	3:27		
20	6:36	7:35	7:59	5:55	8:31	3:25		
21	6:38	7:31	8:02	5:52	8:34	3:22		
22	6:41	7:28	8:05	5:48	8:37	3:20		
23	6:44	7:25	8:08	5:45	8:40	3:18		
24	6:47	7:21	8:11	5:42	8:43	3:15		
25	6:49	7:18	8:14	5:39	8:46	3:13		
26	6:52	7:15	8:17	5:36	8:48	3:11		
27	6:55	7:11	8:19	5:33	8:51	3:09		
28	6:57	7:08	8:22	5:29	8:54	3:07		
29	7:00	7:04	8:25	5:26	8:56	3:05		
30	7:03	7:01	8:28	5:23	8:59	3:03		
31			8:31	5:20				

SEE PAGE 11 FOR ADJUSTMENTS TO SHOOTING TIMES/HOURS

BETHEL

Date	SEPTEMBER		OCTOBER		NOVEMBER		DECEMBER	
	Start	End	Start	End	Start	End	Start	End
1	7:10	9:52	8:23	8:19	9:43	6:47	9:59	4:43
2	7:13	9:49	8:26	8:15	9:46	6:44	10:01	4:41
3	7:15	9:46	8:28	8:12	9:48	6:42	10:03	4:40
4	7:17	9:43	8:31	8:09	9:51	6:39	10:05	4:39
5	7:20	9:40	8:33	8:06	8:54	5:36	10:07	4:38
6	7:22	9:37	8:36	8:03	8:56	5:34	10:09	4:37
7	7:25	9:34	8:38	8:00	8:59	5:31	10:11	4:36
8	7:27	9:30	8:41	7:57	9:02	5:29	10:12	4:35
9	7:30	9:27	8:43	7:54	9:04	5:26	10:14	4:35
10	7:32	9:24	8:46	7:51	9:07	5:24	10:16	4:34
11	7:35	9:21	8:48	7:48	9:10	5:21	10:17	4:33
12	7:37	9:18	8:51	7:45	9:12	5:19	10:18	4:33
13	7:39	9:15	8:53	7:42	9:15	5:17	10:20	4:33
14	7:42	9:12	8:56	7:39	9:18	5:14	10:21	4:32
15	7:44	9:09	8:58	7:36	9:20	5:12	10:22	4:32
16	7:47	9:05	9:01	7:33	9:23	5:10	10:23	4:32
17	7:49	9:02	9:04	7:30	9:26	5:08	Season Closed	
18	7:52	8:59	9:06	7:27	9:28	5:06		
19	7:54	8:56	9:09	7:24	9:31	5:03		
20	7:56	8:53	9:11	7:21	9:33	5:01		
21	7:59	8:50	9:14	7:18	9:36	4:59		
22	8:01	8:47	9:17	7:15	9:38	4:57		
23	8:04	8:44	9:19	7:12	9:41	4:56		
24	8:06	8:40	9:22	7:09	9:43	4:54		
25	8:09	8:37	9:24	7:07	9:45	4:52		
26	8:11	8:34	9:27	7:04	9:48	4:50		
27	8:13	8:31	9:30	7:01	9:50	4:49		
28	8:16	8:28	9:32	6:58	9:52	4:47		
29	8:18	8:25	9:35	6:55	9:55	4:46		
30	8:21	8:22	9:38	6:53	9:57	4:44		
31			9:40	6:50				

SEE PAGE 11 FOR ADJUSTMENTS TO SHOOTING TIMES/HOURS

NOME

Date	SEPTEMBER		OCTOBER		NOVEMBER		DECEMBER	
	Start	End	Start	End	Start	End	Start	End
1	7:13	10:18	8:41	8:30	10:17	6:42	10:55	4:16
2	7:16	10:15	8:44	8:26	10:21	6:39	10:58	4:14
3	7:19	10:11	8:47	8:23	10:24	6:35	11:01	4:12
4	7:22	10:07	8:50	8:19	10:27	6:32	11:03	4:10
5	7:25	10:04	8:53	8:15	9:31	5:29	11:06	4:08
6	7:28	10:00	8:56	8:12	9:34	5:26	11:08	4:07
7	7:31	9:56	8:59	8:08	9:37	5:22	11:11	4:05
8	7:34	9:53	9:02	8:05	9:41	5:19	11:13	4:04
9	7:37	9:49	9:05	8:01	9:44	5:16	11:16	4:02
10	7:40	9:46	9:08	7:58	9:47	5:13	11:18	4:01
11	7:43	9:42	9:11	7:54	9:51	5:10	11:20	4:00
12	7:46	9:38	9:14	7:51	9:54	5:07	11:22	3:59
13	7:48	9:35	9:17	7:47	9:57	5:04	11:23	3:58
14	7:51	9:31	9:20	7:44	10:01	5:01	11:25	3:57
15	7:54	9:27	9:23	7:40	10:04	4:58	11:27	3:57
16	7:57	9:24	9:26	7:37	10:07	4:55	11:28	3:57
17	8:00	9:20	9:29	7:33	10:11	4:52	Season Closed	
18	8:03	9:17	9:33	7:30	10:14	4:49		
19	8:06	9:13	9:36	7:26	10:17	4:46		
20	8:09	9:09	9:39	7:23	10:21	4:43		
21	8:12	9:06	9:42	7:19	10:24	4:40		
22	8:15	9:02	9:45	7:16	10:27	4:38		
23	8:18	8:59	9:48	7:12	10:30	4:35		
24	8:21	8:55	9:51	7:09	10:34	4:32		
25	8:23	8:51	9:55	7:05	10:37	4:30		
26	8:26	8:48	9:58	7:02	10:40	4:27		
27	8:29	8:44	10:01	6:59	10:43	4:25		
28	8:32	8:41	10:04	6:55	10:46	4:23		
29	8:35	8:37	10:08	6:52	10:49	4:20		
30	8:38	8:33	10:11	6:49	10:52	4:18		
31			10:14	6:45				

SEE PAGE 11 FOR ADJUSTMENTS TO SHOOTING TIMES/HOURS

Alaska Migratory Bird Hunting Zones and Game Management Units

