

SOUTHCENTRAL ALASKA SHELLFISH REGULATIONS

GENERAL REGULATIONS

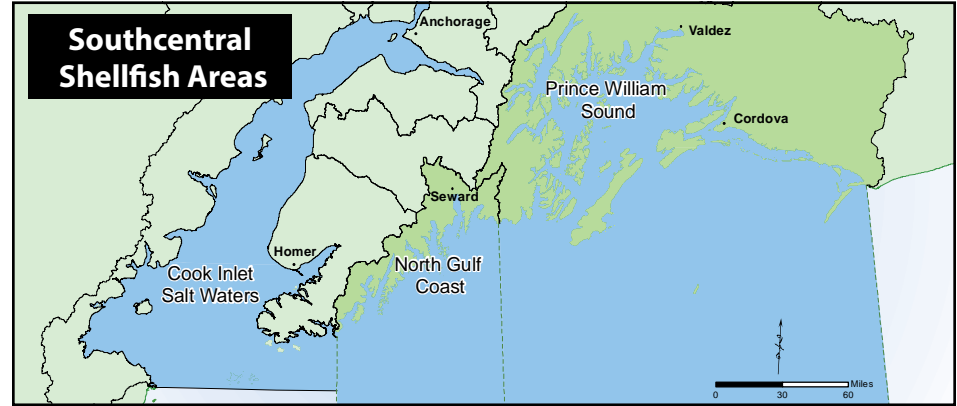
Inclusive waters: Salt waters of Cook Inlet, North Gulf Coast and Prince William Sound. See individual area definitions below.

Cook Inlet: Salt waters of Cook Inlet west of Gore Point and north of Cape Douglas, including Kachemak Bay and the Barren Islands (see map on page 70).

North Gulf Coast: Salt waters within 200 miles of shore from the longitude of Gore Point to the longitude of Cape Fairfield, includes Resurrection Bay (map on page 73).

Prince William Sound: Salt waters within 200 miles of shore from Cape Suckling to Cape Fairfield.(see map on page 77).

The Fishing Season for all species is open year-round unless otherwise noted below.



KING CRAB

- **Season: Closed.** Except see Special Regulation for Prince William Sound (page 83).

TANNER CRAB (visual identification info page 83)

Check for emergency orders for additional regulations.

• **Cook Inlet and North Gulf Coast:**

- A permit is required and is available at Anchorage, Soldotna and Homer ADF&G offices, and the Fish House in Seward.
- **Season:** October 1 - February 28:
 - Male crabs only, 4½ inch minimum: 3 per day, 3 in possession.
 - 1 pot per person with a maximum of 1 pot per vessel.

• **Prince William Sound:**

- **Season: Closed.** Except see Special Regulation for Prince William Sound (page 83).

DUNGENESS CRAB

- **Season: Closed.**

SHRIMP

• **Cook Inlet:**

- **Season: Closed.**

• **North Gulf Coast:**

- **Season: Closed.** Except see Special Regulation for North Gulf Coast (page 83).

• **Prince William Sound:**

- **Season:** April 15–September 15:
- A permit is required (one per household). Permits available online at: www.adfg.alaska.gov/store
 - Per 2017 emergency order: 4 pots per person, maximum of 4 per vessel.
- There are no bag, possession, or size limits.

RAZOR CLAMS

- **Cook Inlet from the Kenai River south to the tip of the Homer Spit: Closed to all clamming.**
- **Rest of Cook Inlet:** No limit.
- **North Gulf Coast:** No limit.
- **Prince William Sound:** No limit.

LITTLENECK AND BUTTER CLAMS

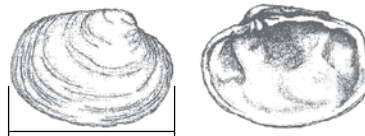
• **Cook Inlet and North Gulf Coast:**

- 80 per day, 80 in possession in combination.
 - Littleneck clams: Must be 1½ inches or wider.
 - Butter clams: Must be 2½ inches or wider.
- **Prince William Sound:** No limit.

OTHER SHELLFISH

- No limit.

BUTTER CLAM



Minimum 2½ inches across the widest part of the shell for Cook Inlet and North Gulf Coast harvest requirement.

The butter clam shell is thick and white. It has heavy concentric growth rings, but no vertical ridges. The shell's inner edge is smooth. Butter clams are 3 to 5 inches long.

PACIFIC LITTLENECK CLAM



Minimum 1½ inches across the widest part of the shell for Cook Inlet and North Gulf Coast harvest requirement.

Littleneck clam shells have concentric growth rings and distinct vertical ridges. The inner edge is ridged like the edge of a quarter. Littleneck clams are about 2 inches long.

METHODS AND MEANS

License: A valid sport fishing license/PID or DAV card is required and must be in your possession when harvesting and/or transporting shellfish for sport or personal use.

Permits required: A shellfish harvest permit is required and must be in your possession when taking shrimp in Prince William Sound and the North Gulf Coast and crab in Cook Inlet, North Gulf Coast and Prince William Sound.

Limits: Sport fishing bag and possession limits given here for shellfish are not in addition to those allowed under subsistence or personal use fishing regulations. Once a bag limit is removed from a pot, that pot may not be returned to the water containing any live crab.

Mutilation or disfigurement prohibited: No one may mutilate or otherwise disfigure a crab in any manner that prevents determination of its sex and/or minimum size restrictions until it has been processed or prepared for consumption. Only whole crab, cooked or uncooked, may be taken off a vessel.

Shellfish pot tampering prohibited: It is illegal to disturb, tamper with, or pull another angler's pots without prior permission of the pot's owner.

Legal gear: Clams may be taken only with rakes, shovels, manually operated clam guns, or by hand. Shrimp may be taken only with pots and ring nets. Crab may be taken only with pots, ring nets, diving gear, dip nets, hooked or hookless hand lines.

Minimum size: No person may take or possess shellfish smaller than the legal size.

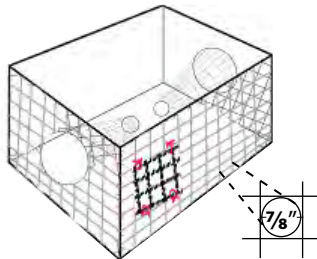
Buoy requirements: A keg or buoy attached to a pot must be plainly and legibly inscribed with the fisher's first initial, last name, home address, and the name or AK boat registration number of the vessel used to operate the pot. In Cook Inlet (including North Gulf Coast) waters, no portion of the line attaching the buoy to the crab pot may float on the surface. The line connecting the main buoy to auxiliary buoys may float.

Escapement mechanisms required: All pots must have a biodegradable escape mechanism. In addition, crab pots must contain two escape rings no less than 4³/₈ inches in diameter.

GEAR REQUIREMENTS

Rigid mesh pots:

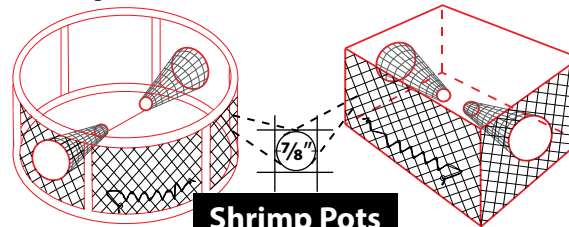
- Pots must have at least one opening in a sidewall, which may include the tunnel.
- The opening of a king crab or Tanner crab pot must be equal to or exceed a 12-inch by 8-inch rectangle, and the opening of a shrimp pot must be at least the size of a 4-inch square.
- The opening may be covered with a single panel secured to pot with no more than four single loops of 100% untreated cotton twine no larger than 30-thread.
- Each loop may only contain one knot and cannot be tied or looped around the web bars.
- The panel must be attached so that when the twine degrades, the panel will drop away from the opening.
- The opening must be within 6 inches of the bottom of the pot and parallel to it.



Rigid Mesh Pot

Shrimp pot requirement:

- Two vertical sides of all shrimp pots must be made entirely of webbing big enough to allow a 7/8-inch round wooden dowel to go through without stretching or otherwise deforming the opening.
- The two vertical sides must touch each other and cannot be covered by anything.
- The other two sides, top, bottom, and tunnels may be composed of any material.
- The 7/8-inch size allows undersize and juvenile shrimp to escape.



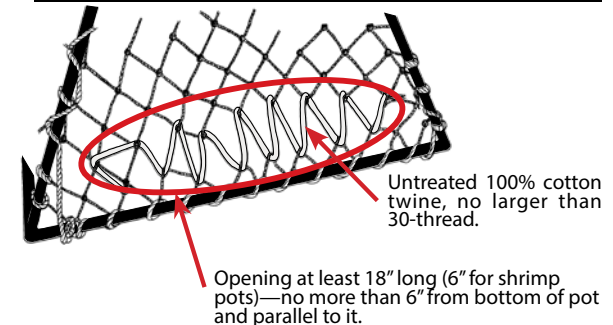
Shrimp Pots

A shrimp pot with no definable sides, such as a round pot, must have 50% of its vertical surface area covered with 7/8-inch webbing. The other 50% of its vertical sides, as well as its top and bottom, may be composed of any material.

Net mesh pots:

- Pots must have a sidewall, which may include a tunnel, with an opening equal to or exceeding 18 inches in length for crab pots and 6-inches or greater in length for shrimp pots.
- The opening must be laced, sewn, or secured together by a single length of untreated 100% cotton twine no larger than 30-thread.
- The cotton twine may be knotted at each end only.
- The opening must be within 6 inches of the bottom of the pot and parallel to it. The cotton twine cannot be tied or looped around the web bars.

Net Mesh Pot Opening Requirement



Opening at least 18" long (6" for shrimp pots)—no more than 6" from bottom of pot and parallel to it.

SPECIAL REGULATIONS

Cook Inlet:

• **China Poot and Peterson Bay (Kachemak Bay):**

- Intertidal beaches between ADF&G markers along Shipwreck Cove and around Otter Rock:
- **Closed to the harvest of all shellfish.**

North Gulf Coast:

• **Personal Use Shrimp-Alaska residents only**—All North Gulf Coast waters, including Resurrection Bay (See map on page 73):

- **Season:** April 15 through September 15.
 - A permit is required. Permits are available at ADF&G offices in Anchorage, Soldotna, and Homer, and at The Fish House in Seward.
 - Shrimp may only be taken with pots and ring nets:
 - Refer to Gear Regulations on page 82.
 - 5 pots per person, maximum of 5 pots per vessel.
 - There are no bag, possession, or size limits.



Spot shrimp from Prince William Sound

Prince William Sound:

• **Subsistence golden king crab and Tanner crab—Alaska residents only:**

- October 1–March 31.
- A permit is required and is available at Anchorage and Cordova ADF&G offices, and the Department of Public Safety offices in Seward and Valdez.
- Open Waters: See ADF&G website for waters open to subsistence crab fishing:

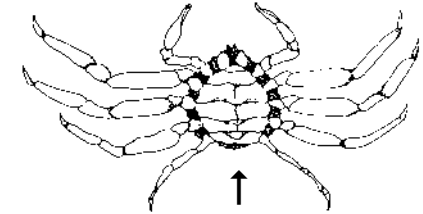
<http://www.adfg.alaska.gov/index.cfm?adfg=ByAreaSubsistencePWS.fishingInfo>

or call ADF&G Cordova at (907) 424-3212.

- Gear is limited to 2 pots per person with a maximum of 2 pots per vessel.
- **Tanner crab:**
 - 5 legal-sized (5½ inches or greater in carapace width) male Tanner crab per day, 5 in possession.
- **Golden king crab:**
 - Annual household limit of 3 legal-sized (7 inches as measured in a straight-line distance across the carapace, including spines) male golden king crab per year.
- **Razor Clams:**
 - There are no bag or possession limits.
 - **In waters east of 146° W. longitude and south of a line from the southernmost tip of Point Bentinck (Hinchbrook Island) to the southernmost tip of Point Whittsed:**
 - A permit is required and is available at the Cordova ADF&G office.
 - Only razor clams 4½ inches or longer may be taken.

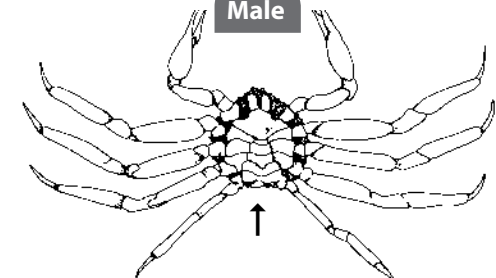
TANNER CRAB

Female - **NO HARVEST ALLOWED**

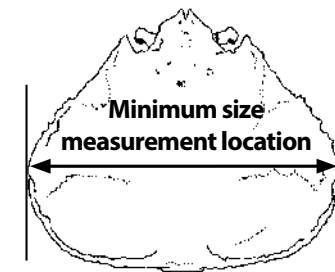


Wide abdominal flap covers most of underside (females usually smaller than 5½")

Male



Narrow abdominal flap



Width measurement of Tanner crab is the straight-line distance across the carapace, **including** spines.