

ALASKA DEPARTMENT OF FISH AND GAME
DIVISION OF COMMERCIAL FISHERIES
NEWS RELEASE



Sam Cotten, Commissioner
Scott Kelley, Director



Contact: Brian Marston, Area Mgmt. Biologist or Alyssa Frothingham, Asst. Area Mgmt. Biologist
43961 Kalifornsky Beach Rd, Suite B Soldotna, AK 99669
Phone: (907) 262-9368 Fax: (907) 262-4709
Date Issued: August 9, 2018 Time: 12:00 p.m.

UPPER COOK INLET COMMERCIAL FISHING ANNOUNCEMENT No. 28
EMERGENCY ORDER NUMBER 2S-28-18

Upper Cook Inlet Commercial Fishing Announcement No. 28 extends commercial salmon fishing with set and drift gillnets in the Kasilof River Special Harvest Area (KRSHA) from 6:00 p.m. on Thursday, August 9, 2018 until 6:00 p.m. on Friday, August 10, 2018.

The current Kasilof River sockeye salmon cumulative passage estimate is approximately 378,500 fish. Therefore, the upper bound of the biological escapement goal (BEG) of 160,000–340,000 sockeye salmon has been exceeded, and based on recent daily sonar passage rates, the upper bound of the optimal escapement goal (OEG) range of 160,000–390,000 fish, will also be exceeded without some additional harvest of this stock.

Commercial fishermen are reminded of the following provisions that apply to fishing within the KRSHA:

- a. a set gillnet may not exceed 35 fathoms in length;
- b. no more than 50 fathoms of drift gillnet may be used to take salmon, but drifters are reminded that 5 AAC 21.331 and 5 AAC 39.240 are still in effect, limiting the amount of drift gillnet gear that may be aboard to no more than 150 fathoms for single permit vessels or no more than 200 fathoms for dual permit vessels.
- c. a permit holder may not use more than one set gillnet per permit to take salmon at any time; dual set gillnet permit holders may fish with 2 nets total;
- d. a person may not operate a gillnet outside the special harvest area when operating a gillnet in the special harvest area;
- e. there is no minimum distance between gear, except that a gillnet may not be set or operated within 600 feet of a set gillnet located outside of the special harvest area; and
- f. Except for nets which may not be in the water after the closure, set gillnet gear, including running lines, shore leads, anchors, and buoys must be removed from the water and the beach prior to the opening of the KRSHA and no more than 4 hours after any closure of the KRSHA, and may not be placed back in the water or on the beach prior to the next opening of the KRSHA.

- g. During this fishing period in the KRSHA, the navigation channel is closed to all commercial fishing with set gillnet gear including nets and anchor lines.

Fish harvested in the KRSHA by set gillnet fishermen during this fishing period should be reported in statistical area 244-25 and by drift fishermen in statistical area 244-26.

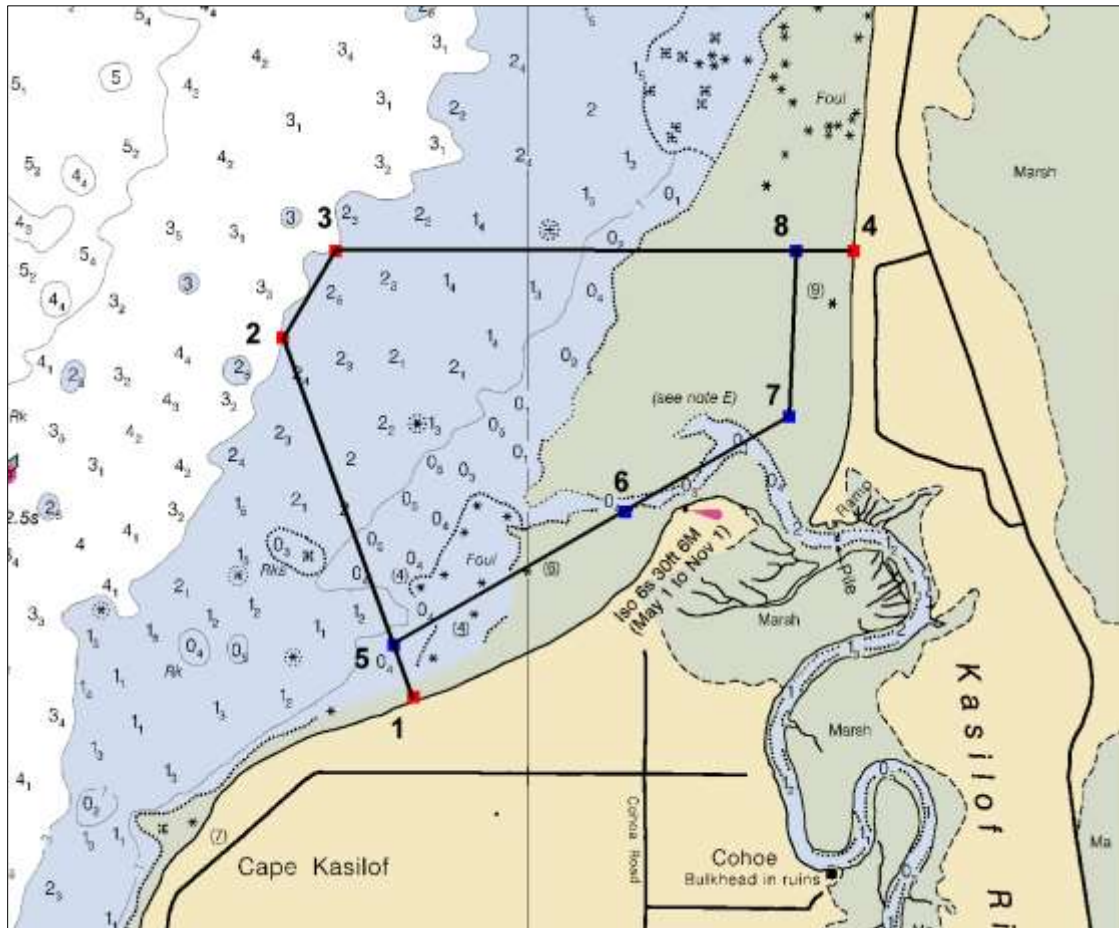


Figure 1.—Map of the Kasilof River Special Harvest Area with waypoint boundaries.

| | | |
|-------------|--------------------|----------------------|
| Waypoint 1: | 60° 22.59' N. lat. | 151° 20.79' W. long. |
| Waypoint 2: | 60° 23.83' N. lat. | 151° 21.70' W. long. |
| Waypoint 3: | 60° 24.13' N. lat. | 151° 21.34' W. long. |
| Waypoint 4: | 60° 24.13' N. lat. | 151° 17.72' W. long. |
| Waypoint 5: | 60° 22.77' N. lat. | 151° 20.93' W. long. |
| Waypoint 6: | 60° 23.23' N. lat. | 151° 19.31' W. long. |
| Waypoint 7: | 60° 23.56' N. lat. | 151° 18.17' W. long. |
| Waypoint 8: | 60° 24.13' N. lat. | 151° 18.12' W. long. |