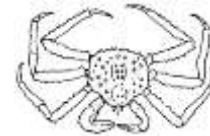

ALASKA DEPARTMENT OF FISH AND GAME

DIVISION OF COMMERCIAL FISHERIES

NEWS RELEASE



Sam Cotten, Commissioner
Scott Kelley, Director



Contact:	Petersburg Area Office
Joe Stratman	P.O. Box 667
Adam Messmer	Petersburg, Alaska 99833
Phone: (907) 772-5238	Date: June 28, 2018
Fax: (907) 772-9336	Time: 9:00 a.m.

SOUTHEAST ALASKA PERSONAL USE KING CRAB FISHERY ANNOUNCEMENT

Petersburg...The Alaska Department of Fish and Game (department) announced the following information regarding the opening of the 2018/19 Southeast Alaska personal use golden king crab fishery in Registration Area A (Southeast Alaska), and the personal use red and blue king crab fishery outside of Section 11-A:

- **Peril Strait and Lynn Sisters will remain closed to red and blue king crab personal use fishing.**
- **East Central will remain closed to golden king crab personal use fishing.**

New regulations for the Southeast Alaska personal use king crab fishery that were adopted by the Alaska Board of Fisheries in January 2018 are effective for the fishery opening. These regulations require that:

- **Beginning at 12:01 a.m., July 1, 2018, Alaska residents fishing for all species of king crab must have an Alaska Department of Fish and Game 2018/19 Southeast Alaska Regional Personal Use King Crab Permit (Excluding Section 11-A red and blue king crab) [5 AAC 77.664(a)].**
- **Beginning at 12:01 a.m., July 1, 2018, all areas open to personal use king crab fishing will have a daily bag and possession limit of three king crab per day as prescribed in regulation [5 AAC 77.664(b)].**

The permit is free and available through the department's online store at: www.adfg.alaska.gov/Store/. Permit holders must sign their permit in ink to make it valid and have the permit in their possession while taking part in personal use king crab fisheries in Southeast Alaska.

Regional personal use king crab permits are valid for golden king crab in all open areas and for red and blue king crab in all open areas except Section 11-A which is managed under a separate permit. The new permit is in the form of a logbook that must be filled out each time king crab pots or ring nets are retrieved (or dive gear is used) whether king crab are harvested or not. Permit holders are required to report their harvest either online at any time or by turning in the completed permit at the end of the season.

Survey and Fishery Information

Because the 2018 Southeast Alaska red king crab stock assessment survey is not complete, the department used 2017 red and blue king crab stock assessment survey results to set bag and possession limits and determine open areas for the red and blue king crab personal use fishery outside of Section 11-A. The department also used golden king crab commercial fisheries data from the most recently completed season to set bag and possession limits and determine open areas for the golden king crab personal use

fishery in Southeast Alaska. Red and blue king crab stock assessment survey results and golden king crab commercial fisheries data from 2017 indicate the following:

- Regionwide the harvestable biomass of mature red and blue king crab exceeds 200,000 lbs.
- Red and blue king crab stock health in Peril Strait remains poor.
- Red and blue king crab stocks in Lynn Sisters are moderate, but a low percentage of the mature biomass is legal sized crab.
- Golden king crab stocks in East Central cannot withstand the level of personal use harvest prescribed in regulation.
- All other survey areas and non-survey areas appear to have stocks that can withstand some level of harvest.

Analysis of 2018 Southeast Alaska red king crab stock assessment survey results will be completed by mid-September. Any changes to the 2018/19 Southeast Alaska personal use king crab fishery outside of Section 11-A will be announced at that time.

Juneau Area: Section 11-A

Status of the red and blue king crab personal use fishery within Section 11-A will be addressed in a separate news release once the survey is complete in late July. For more information on the red and blue king crab personal use fishery within Section 11-A please contact Dave Harris at (907) 465-4250.

Closed Area Descriptions

- Peril Strait: Section 13-C, Peril Strait (all waters of Peril Strait including Hoonah Sound, Ushk Bay, Rodman Bay, Saook Bay, Hanus Bay, Sitkoh Bay, and contiguous waters west of a line from Point Hayes to Point Thatcher, and north of a line from Pogibshi Point due west to the Chichagof shoreline).
- Lynn Sisters: Waters north of a line from a point at 58°27.00' N. latitude, 135°06.50' W. longitude, due east to a point at 58°27.00' N. latitude, 135°03.00' W. longitude, and west of a line from a point at 58°27.00' N. latitude, 135°03.00' W. longitude to Point Whidbey including St. James Bay.
- 5 AAC 34.107(d) East Central: all waters of Section 11-D, District 10, and District 9 east of a line from Kingsmill Point at 56°50.00' N. latitude, 134°25.17' W. longitude, to Point Gardner at 57°01.00' N. latitude, 134°37.00' W. longitude, all waters of District 8 north of the latitude of Blaquiere Point at 56°35.00' N. latitude, all waters of Section 6-A, and all waters of District 5 north of the latitude of Point Baker at 56°21.53' N. latitude.

Refer to Figure 1 for a map showing open and closed waters for personal use red and blue king crab fishing. Refer to Figure 2 for a map showing open and closed waters for personal use golden king crab fishing.

For additional information on king crab personal use fisheries, visit the Southeast Alaska Personal Use King Crab Fishery web site:

<http://www.adfg.alaska.gov/index.cfm?adfg=PersonalUsebyAreasoutheastkingCrab.regs>

Changes to 5 AAC 77.664 made at the January 2018 BOF meeting are not reflected in the 2017-2018 Subsistence and Personal Use Statewide Fisheries Regulations booklet in area offices and are not yet available online. To obtain a text version of the new regulatory language in 5 AAC 77.664, contact Joe Stratman (907-772-5238) or Adam Messmer (907-465-4853).

The Emergency Order corresponding with this announcement is EO 1C1418.

News releases web site: <http://www.adfg.alaska.gov/index.cfm?adfg=cfnews.main>.

<i>Office</i>	<i>Ketchikan</i>	<i>Petersburg</i>	<i>Wrangell</i>	<i>Sitka</i>	<i>Juneau</i>	<i>Haines</i>	<i>Hoonah</i>	<i>Yakutat</i>
<i>ADF&G</i>	225-5195	772-3801	874-3822	747-6688	465-4250	766-2830		784-3255
<i>AWT</i>	225-5111	772-3983	874-3215	747-3254	465-4000	766-2533	945-3620	784-3255

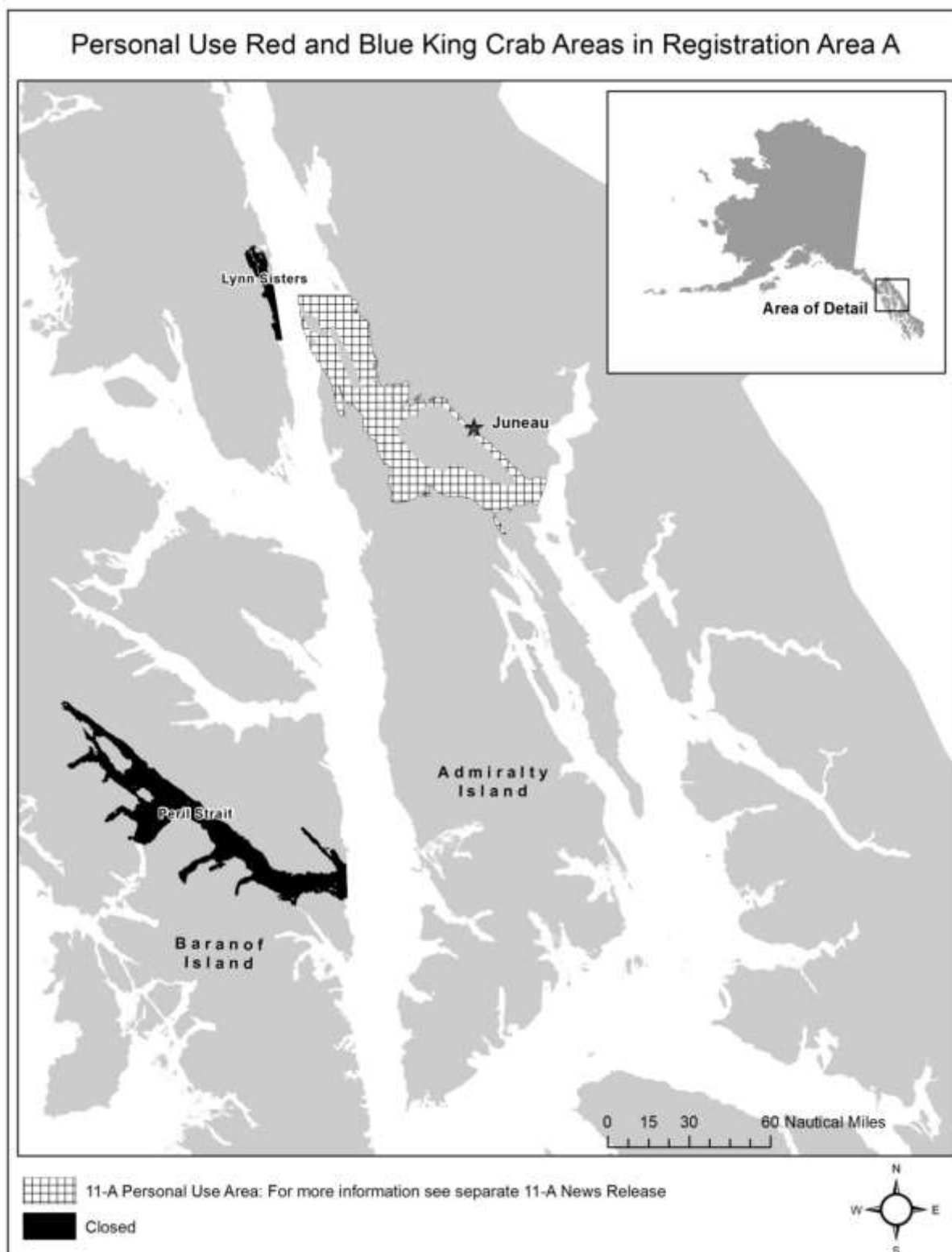


Figure 1. This map shows closed areas for the 2018/19 red and blue king crab personal use fishery and is for reference purposes only. Please refer to text in this news release for legal descriptions of management area boundaries and other details.

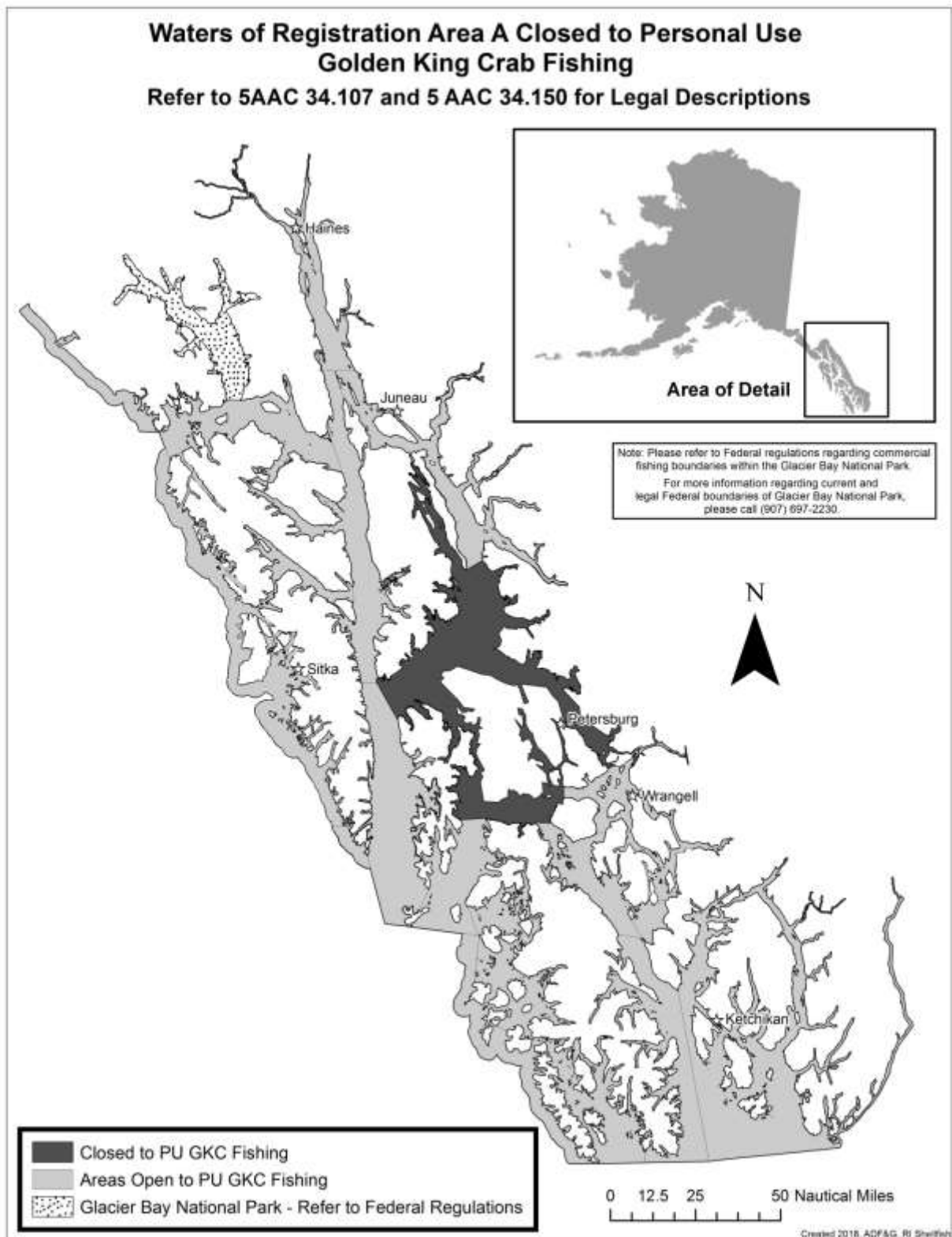


Figure 2. This map shows closed areas for the 2018/19 golden king crab personal use fishery and is for reference purposes only. Please refer to text in this news release for legal descriptions of management area boundaries and other details.