

ALASKA DEPARTMENT OF FISH AND GAME

DIVISION OF COMMERCIAL FISHERIES

NEWS RELEASE



Sam Cotten, Commissioner
Scott Kelley, Director



Contact:
Jan Rumble, Area Groundfish Management Biologist
Elisa Russ, Assistant Area Management Biologist
Phone: (907) 235-8191
Fax: (907) 235-2448

Homer Area Office
3298 Douglas Place
Homer, Alaska 99603

Date Issued: 06/01/17

PRINCE WILLIAM SOUND FISHERY ANNOUNCEMENT

PARALLEL PACIFIC COD SEASON CLOSES TO POT AND LONGLINE GEAR

STATE-WATERS PACIFIC COD SEASON OPENS TO POT AND LONGLINE GEAR

EMERGENCY ORDERS # 2-GF-E-06-17

This fisheries announcement provides information on the status of Pacific cod fisheries in the Prince William Sound Area (PWS). The PWS parallel Pacific cod season will close to vessels using pot and longline gear effective 12:00 noon June 10, and will remain open to vessels using jig gear. The PWS state-waters Pacific cod season will immediately open to vessels fishing with pot gear at 12:00 noon June 10. The PWS state-waters Pacific cod season will open to vessels fishing with longline gear at 12:00 noon, June 17, following the mandatory 7-day closure. The state-waters guideline harvest level (GHL) for pot and jig gear combined is 650,721 lb and the state-waters GHL for longline gear is 3.7 million lb.

Parallel Pacific cod fishery closures for pot and longline gear coincide with the National Marine Fisheries Service (NMFS) regulatory closures of the Pacific cod pot gear and hook-and-line (HAL) gear sectors in the federal Central Gulf of Alaska Area (CGOA).

Fishermen must obtain a **PWS state-waters Pacific cod area registration** before participating in the state-waters Pacific cod season. Area registration for the PWS state-waters Pacific cod season for longline gear is exclusive, and vessel registrations may be obtained from department offices in Homer, Cordova, and Anchorage. Under authority of 5 AAC 28.020(c), fishermen are required to **check in with the department prior to each fishing trip** in the PWS Management Area by telephoning (907) 424-7225 and reporting the following (detailed on the area registration form): 1) vessel name, 2) estimated date and time of departure for trip, and 3) estimated length of trip. Fishermen are reminded that there is a 24-hour delivery time requirement following closure of a groundfish fishery (5 AAC 28.271) and that lingcod may not be retained prior to July 1.

Fishing area: During a state-waters season, Pacific cod may be taken in waters of the PWS Area (5 AAC 28.205) except for those waters of the Outside District east of 146° 15.12' W. long. (the latitude of Hook Point) (5 AAC 28.267 (e) (2)); see map in Figure 1.

Steller Sea Lion rookery closures: Directed fishing for all groundfish species is closed in waters within 3 nautical miles of two Steller sea lion rookeries within PWS (Figure 1). For specific regulatory language contact NMFS in Kodiak at (907) 481-1780 or <https://alaskafisheries.noaa.gov/fisheries/sslpm>.

For additional information, contact ADF&G in Homer, at 907-235-8191.

-continued-

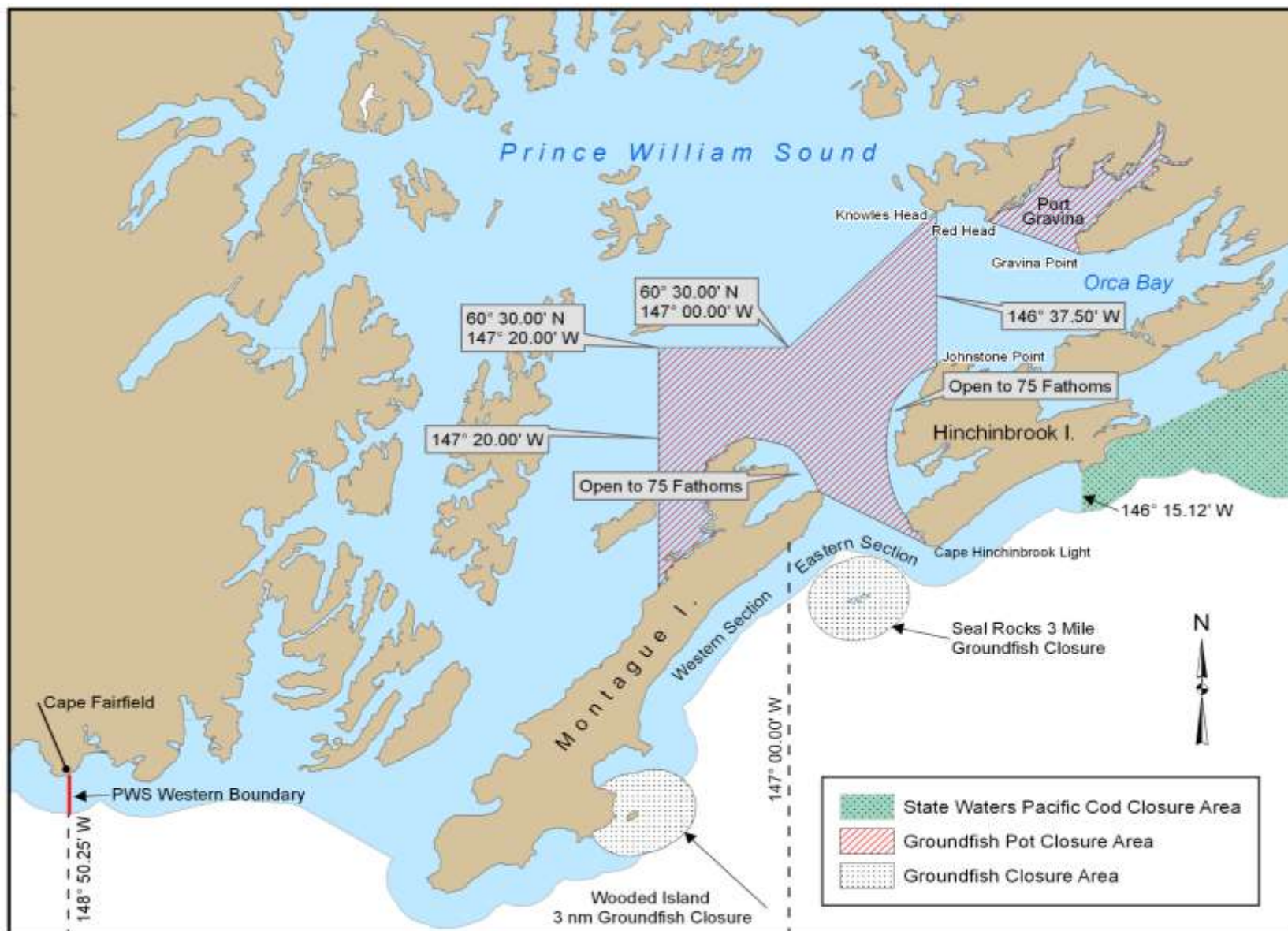


Figure 1. Prince William Sound closures to groundfish pot gear, groundfish fishing, and to the state-waters Pacific cod season.

-end-