

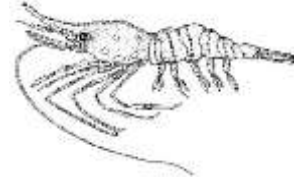
ALASKA DEPARTMENT OF FISH AND GAME

DIVISION OF COMMERCIAL FISHERIES

NEWS RELEASE



Sam Cotten, Commissioner
Scott Kelley, Director



Contact:
Jan Rumble, Area Shellfish Management Biologist
Elisa Russ, Shellfish Management Biologist

Homer Area Office
3298 Douglas Place
Homer, Alaska 99603

Phone: (907) 235-8191
Fax: (907) 235-2448

Date Issued: 5/27/17

FISHERY ANNOUNCEMENT

PRINCE WILLIAM SOUND COMMERCIAL SHRIMP POT FISHERY

FOURTH PERIOD OPENS

EMERGENCY ORDER 2-SF-E-05-17

The PWS commercial shrimp pot fishery opened April 15 with a guideline harvest level (GHL) of 67,000 lb. The initial fishing period closed April 25, the second period opened May 1 and closed May 11, and the third period opened May 16 and closed May 25. Fish ticket information from the first period documented 23,356 lb harvested by 44 vessels. For the second and third fishing periods, harvest estimates were made from the mandatory call-in: 21,140 lb of whole shrimp were harvested by 40 vessels for the 2nd period and for the 3rd period 14,210 lb of whole shrimp were harvested by 29 vessels. The estimated total harvest for the fishery is 59,193 lb from fish tickets and the call-in information. An estimated 25,392 lb was harvested from statistical area 486034.

The fourth period of the PWS commercial shrimp pot fishery will open at 8:00 a.m. Wednesday, May 31 and will close at 8:00 p.m. Monday, June 5. Gear limits remain at a maximum of 40 shrimp pots per vessel. A vessel operator may not have more than the legal limit of pot gear in aggregate, on board the vessel or in the water at any time. **Hours of gear operation will remain at 8:00 a.m. to 8:00 p.m.** The area open to commercial fishing is Area 2 as shown in Figure 1 (set by EO # 2-SF-E-02-17).

The department will be monitoring the fishery closely during this period. Management action could be taken during this fishing period in order to target the GHL and stay under the 50% statistical area harvest limit. Checking in before fishing and timely harvest reporting will allow the department to closely target the GHL. Fisherman should monitor news releases for more information during this fishing period.

All participating fishermen must call the reporting line at (907) 424-7215 no earlier than 24 hours before fishing, and report the information detailed on the pre-trip information form (5 AAC 31.245(c)). Additionally, **before landing shrimp, all operating commercial shrimp pot**

fishery vessels must call the reporting line and report the information requested on the harvest reporting form supplied in the registration packet (5 AAC 31.245(b)).

Other pertinent fishery regulations are listed in Chapters 31 and 39 of the **2015-2018 Statewide Commercial Shrimp, Dungeness Crab, and Miscellaneous Shellfish Fishing Regulations** booklet available at department offices in Anchorage, Cordova, and Homer or at <http://www.adfg.alaska.gov/index.cfm?adfg=fishregulations.commercial>. Contact ADF&G at (907) 235-8191 for further information.

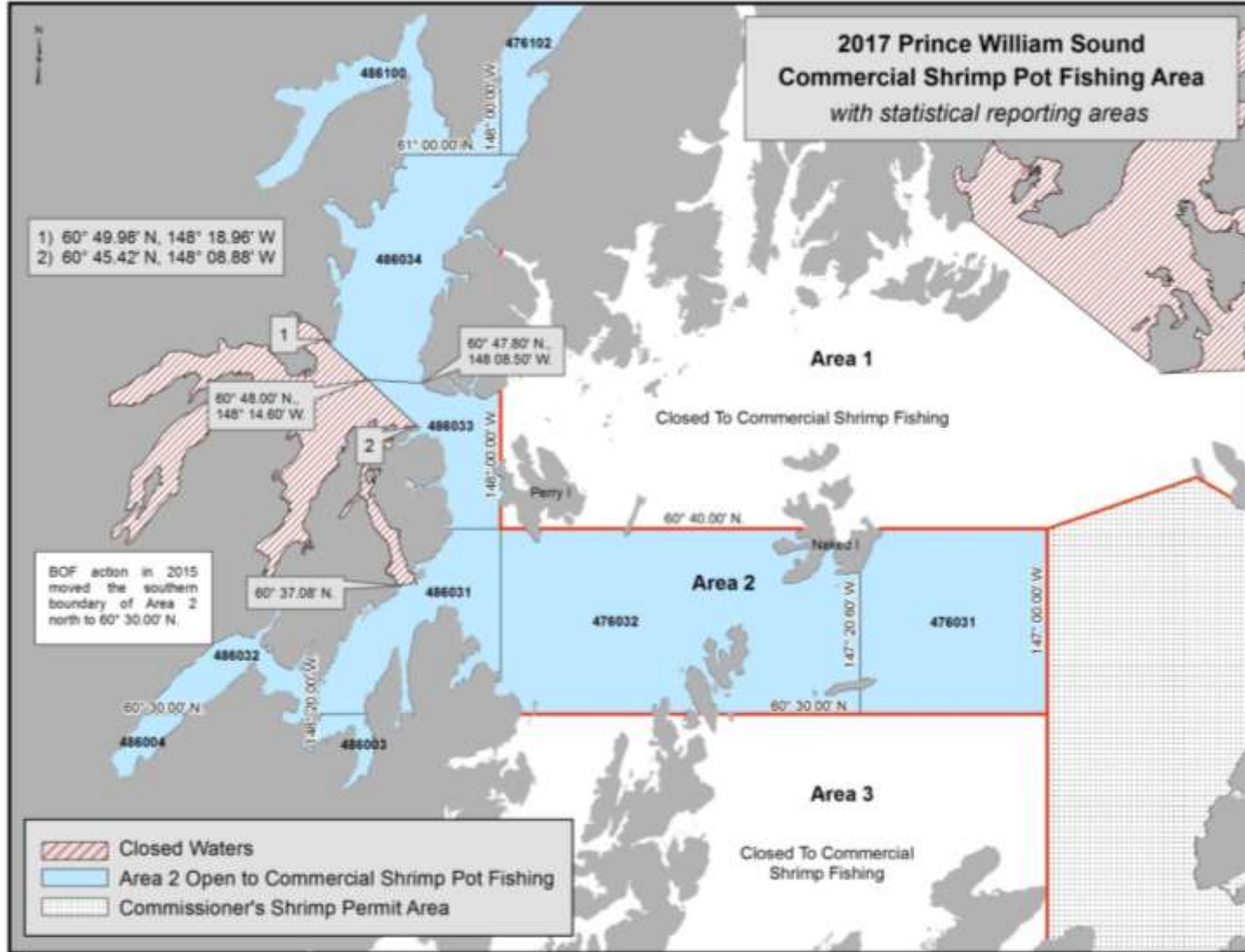


Figure 1. 2017 Prince William Sound commercial shrimp pot fishing area open is Area 2, shown in blue.

-end-