

**ALASKA DEPARTMENT OF FISH AND GAME**  
**DIVISION OF COMMERCIAL FISHERIES**  
**NEWS RELEASE**



*Sam Cotten, Commissioner*  
*Scott Kelley, Director*



---

Contact: Pat Shields, Area Mgmt. Biologist; Alyssa Frothingham, Asst. Area Mgmt. Biologist  
43961 Kalifornsky Beach Rd, Suite B Soldotna, AK 99669  
Phone: (907) 262-9368 Fax: (907) 262-4709  
Date Issued: May 18, 2017 Time: 10:00 a.m.

---

**UPPER COOK INLET COMMERCIAL FISHING ANNOUNCEMENT No. 1**  
**EMERGENCY ORDER NUMBER 2S-01-17**

Upper Cook Inlet Commercial Fishing Announcement No. 1 closes commercial salmon fishing in that portion of the Northern District of Upper Cook Inlet from the wood chip dock located approximately at 61° 02.77' N. lat., 151° 10.04' W. long., to the Susitna River during the 2017 directed king salmon fishing season; which occurs on Mondays from May 25 through June 24 (Figure 1). During the 2017 fishery, there are four scheduled fishing periods on May 29 and June 5, 12, and 19. Each fishing period will be open from 7:00 a.m. until 7:00 p.m., unless closed or modified by subsequent emergency order (EO).

Commercial fishermen participating in the Northern District directed king salmon fishery are reminded of the following provisions found in 5 AAC 21.366 *Northern District King Salmon Management Plan*. No permit holder, whether they own one or two permits, may operate more than one set gillnet during the directed king salmon fishery; no set gillnet may be set or operated within 1,200 feet of another set gillnet; and no permit holder may set a gillnet seaward of a set gillnet operated by another permit holder.

King salmon originating from the Chuitna River drainage remain a stock of management concern. As a result of this finding, the king salmon sport fishery in this drainage has been closed since the 2011 season. The *Northern District King Salmon Management Plan* (5 AAC 21.366) specifies that if the Chuitna River is closed to sport fishing, the commissioner shall close the commercial king salmon fishery, by EO, from the wood chip dock to the Susitna River. This EO implements that mandatory closure.

The Northern District, including the closed waters identified in this announcement, will be open for the regular fishing season from 7:00 a.m. to 7:00 p.m. on Mondays and Thursdays, beginning on Monday, June 26, 2017.

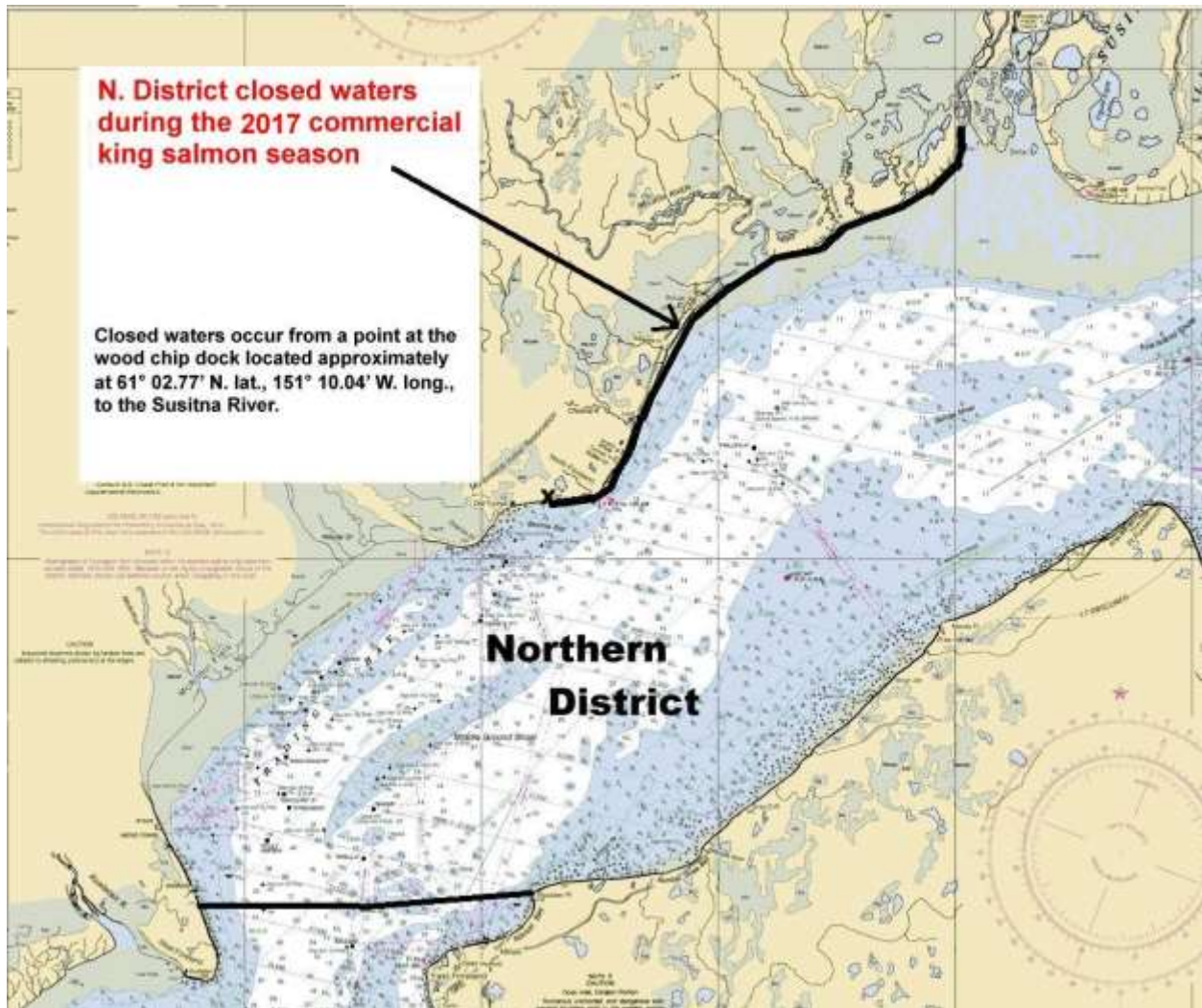


Figure 1.—Map of the area closed to commercial fishing during the 2017 Northern District set gillnet directed king salmon fishery.