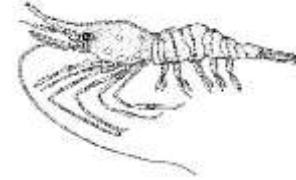


**ALASKA DEPARTMENT OF FISH AND GAME
DIVISION OF COMMERCIAL FISHERIES
NEWS RELEASE**



*Sam Cotten, Commissioner
Scott Kelley, Director*



Contact:
Jan Rumble, Area Shellfish Management Biologist
Elisa Russ, Shellfish Management Biologist

Homer Area Office
3298 Douglas Place
Homer, Alaska 99603

Phone: (907) 235-8191
Fax: (907) 235-2448

Date Issued: 4/28/17

**FISHERY ANNOUNCEMENT
PRINCE WILLIAM SOUND COMMERCIAL SHRIMP POT FISHERY
SECOND PERIOD OPENS
EMERGENCY ORDER 2-SF-E-03-17**

The first period of the PWS commercial shrimp pot fishery opened at 8:00 am April 15 with a guideline harvest level (GHL) of 67,000 lb, and closed at 8:00 p.m. April 25. The preliminary reported harvest from vessel call-ins is approximately 23,456 lb of whole shrimp harvested by 41 vessels with approximately 11,728 lb harvested from statistical area 486034.

The second period of the PWS commercial shrimp pot fishery will open at 8:00 a.m. Monday, May 1 and will close at 8:00 p.m. Thursday, May 11. Gear limits remain at a maximum of 40 shrimp pots per vessel. A vessel operator may not have more than the legal limit of pot gear in aggregate, on board the vessel or in the water at any time. **Hours of gear operation will remain at 8:00 a.m. to 8:00 p.m.** The area open to commercial fishing is Area 2 as shown in Figure 1 (set by EO # 2-SF-E-02-17).

All participating fishermen must call the reporting line at (907) 424-7215 no earlier than 24 hours before fishing, and report the information detailed on the pre-trip information form (5 AAC 31.245(c)). Additionally, **before landing shrimp, all those operating commercial shrimp pot fishery vessels must call the reporting line** and report the information requested on the harvest reporting form supplied in the registration packet (5 AAC 31.245(b)).

Other pertinent fishery regulations are listed in Chapters 31 and 39 of the **2015-2018 Statewide Commercial Shrimp, Dungeness Crab, and Miscellaneous Shellfish Fishing Regulations** booklet available at department offices in Anchorage, Cordova, and Homer or at <http://www.adfg.alaska.gov/index.cfm?adfg=fishregulations.commercial>. Contact ADF&G at (907) 235-8191 for further information.

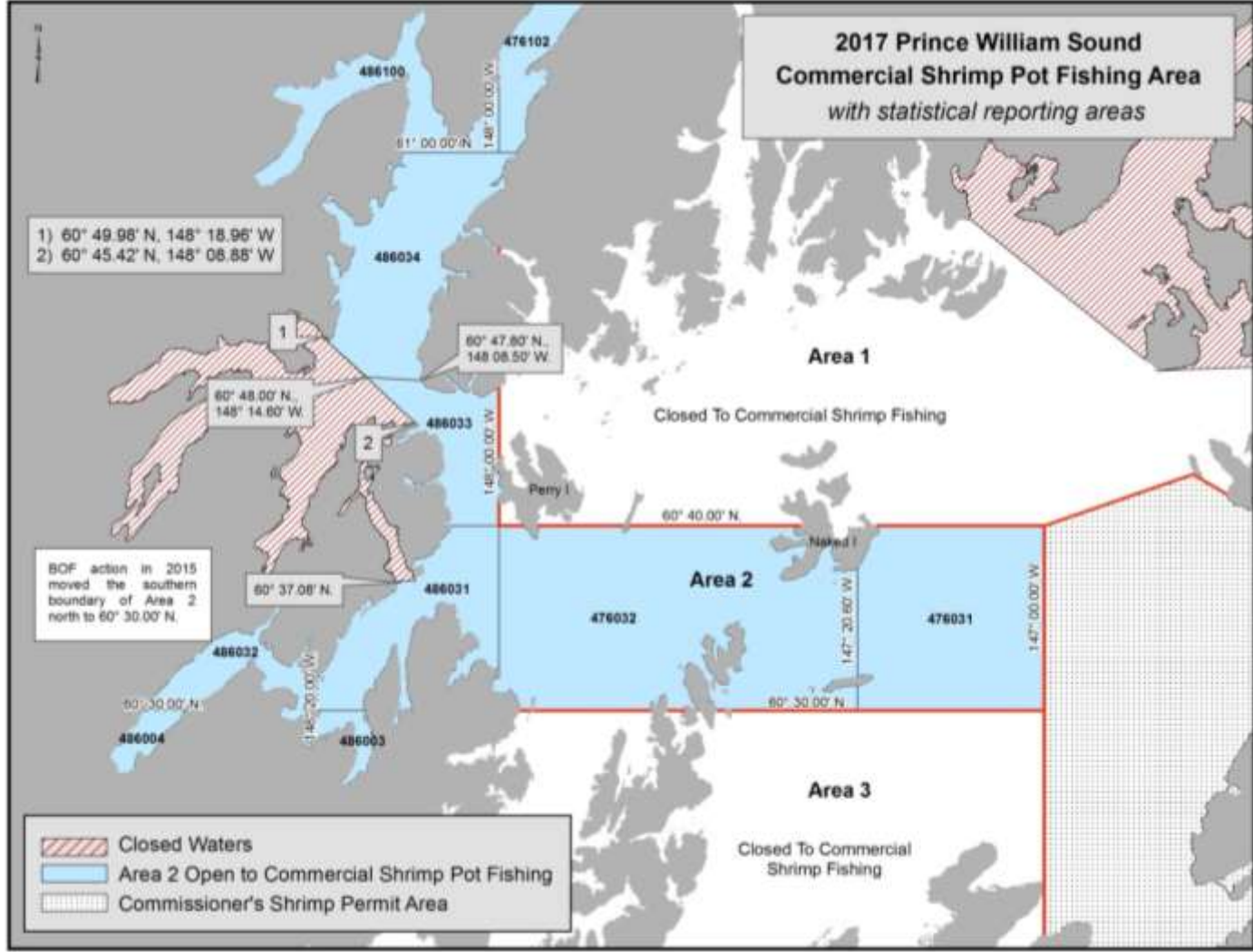


Figure 1. 2017 Prince William Sound commercial shrimp pot fishing area open is Area 2, shown in blue.

-end-