

---

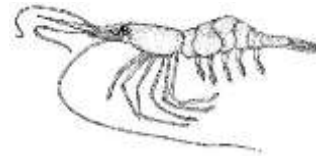
# ALASKA DEPARTMENT OF FISH AND GAME

## DIVISION OF COMMERCIAL FISHERIES

### NEWS RELEASE



*Sam Cotten, Commissioner*  
*Scott Kelley, Director*



---

Contact:  
Quinn Smith

Phone: (907) 465-6393  
Fax: (907) 465-4944

Douglas Area Office  
802 3<sup>rd</sup> St  
Douglas, Alaska 99824  
Date: April 10, 2017  
Time: 9:00 a.m.

---

#### **SOUTHEAST ALASKA COMMERCIAL BEAM TRAWL SHRIMP FISHERY ANNOUNCEMENT**

Douglas. . . The Alaska Department of Fish and Game announced today the following information concerning the 2017/18 Southeast Alaska commercial beam trawl fishery.

##### Guideline Harvest Levels (GHLs) for the 2017/18 Season

Participation in the Southeast beam trawl fishery increased dramatically during the 2015/16 and 2016/17 seasons after over a decade of low annual harvests. Future harvest is likely to increase as more vessels enter the fishery and vessels currently participating increase their effort. Due to this expected increase in fishing pressure, the department implemented precautionary GHLs for the 2016/17 season to prevent overharvest of stocks with little population status information, while still allowing for fishery expansion and evolution of trawl shrimp markets. These GHLs will remain unchanged for the 2017/18 season.

Guideline harvest levels will only be implemented in the traditional portions of Districts 6 and 8. All other districts and areas will be managed to the upper end of the GHRs (Tables 1 & 2). Very little harvest has been taken from the traditional portions of Districts 7 and 10 compared to historical levels. If future harvest increases in those areas, a similar precautionary GHL may be warranted. This is also true in the non-traditional fishing areas. However, since logbooks are required in these areas, future GHL decisions will be informed by those data.

To maximize fleet opportunity, any unharvested GHL remaining after a period closes will be added to the next harvest period (up to the maximum GHR for that period); any GHL remaining over the GHR for the next period will be rolled into the following period. This harvest strategy will allow the fleet to target shrimp during different seasons as the market dictates. Table 3 shows how this management strategy would have been implemented during the 2015/16 season, i.e. when the GHL is not caught in the initial period, the “rollover” increases the GHL in subsequent periods allowing the fleet the opportunity to fish in later periods while still constraining the total harvest within the bounds that allowed for historical expansion of harvest in these districts.

News releases will be issued two weeks after the start of a fishing period to announce any GHL rollover from the previous period.

Table 1. Guideline harvest ranges (GHRs) in pounds, fishing periods, and spot and coonstripe shrimp bycatch limits in pounds by fishing area for the 2017/18 beam trawl shrimp fishery in traditional areas of southeastern Alaska.

<b>GHL by fishing period</b>	<b>Traditional areas<sup>1</sup></b>			
	<b>District 6<sup>1</sup></b>	<b>District 7<sup>1</sup></b>	<b>District 8</b>	<b>District 10<sup>1</sup></b>
May 1 - June 30, 2017	300,000	50,000	250,000	75,000
July 1 - August 31, 2017	290,000	50,000	175,000	75,000
September 1 - October 31, 2017			180,000	
September 1, 2017 - February 28, 2018	160,000	50,000		75,000
November 1, 2017 - February 28, 2018			65,000	
Spot shrimp season bycatch limit	1,000	1,000	6,000	1,000
Coonstripe shrimp season bycatch limit	9,000	1,000	10,000	3,000

1. See 5 AAC 31.111(2) in the 2015-2018 Statewide Commercial Shrimp, Dungeness crab, and Miscellaneous Shellfish Fishing Regulations booklet for specific descriptions of traditional beam trawl areas in Districts 6, 7 and 10.

Table 2. Guideline harvest levels (GHLs) in pounds, fishing periods, and spot and coonstripe shrimp bycatch limits in pounds by fishing area for the 2017/18 beam trawl shrimp fishery in non-traditional areas of southeastern Alaska.

<b>GHL for season</b>	<b>Non-traditional areas<sup>1</sup></b>							
	<b>District</b>							
	3	5	6 <sup>1</sup>	7 <sup>1</sup>	9	10 <sup>1</sup>	11A,B,C	11D
May 1, 2017 - February 28, 2018	- - - - 100,000 in each district - - - -						75,000 <sup>2</sup>	150,000
Spot shrimp season bycatch limit	1,000	1,000	1,000	1,000	2,000	2,000	1,000 <sup>3</sup>	1,000 <sup>4</sup>
Coonstripe shrimp season bycatch limit	3,000	1,000	1,000	2,000	2,000	7,000	4,000 <sup>3</sup>	1,000 <sup>4</sup>

1. See 5 AAC 31.111(3) in the 2015-2018 Statewide Commercial Shrimp, Dungeness crab, and Miscellaneous Shellfish Fishing Regulations booklet for specific descriptions of non-traditional beam trawl areas in Districts 6, 7 and 10.
2. GHLs per section.
3. Allowable bycatch for Sections 11-A and 11-B combined as stated in 5 AAC 31.116(b)(9)(A).
4. Allowable bycatch for Sections 11-C and 11-D combined as stated in 5 AAC 31.116(b)(9)(B).

#### Spot and Coonstripe shrimp bycatch

Trip and seasonal beam trawl bycatch limits for spot and coonstripe shrimp (less than 60 count per pound) are in effect, except in District 11, where the combined spot and coonstripe trip bycatch limit is 10 percent of the whole weight of all pink and sidestripe shrimp on board the vessel. Seasonal bycatch limits along with shrimp GHRs, and fishing periods for traditional and non-traditional fishing areas are summarized in Tables 1 and 2. Specific regulatory language may be found under: 5 AAC 31.116 in the 2015-2018 Statewide Commercial Shrimp, Dungeness crab, and Miscellaneous Shellfish Fishing Regulations booklet.

Table 3: Example of how the 2017/18 rolling GHLS would have revised period-specific GHLS for the 2015/16 season in the traditional fishing areas of Districts 6 and 8.

	Preseason GHSL		2015/16 Harvest		Rollover Available (For Next Period)		Adjusted GHSL (Preseason + Rollover)	
	<i>District 6</i>	<i>District 8</i>	<i>District 6</i>	<i>District 8</i>	<i>District 6</i>	<i>District 8</i>	<i>District 6</i>	<i>District 8</i>
GHR by fishing period:	80,000 to 400,000	25,000 to 250,000	80,000 to 400,000	25,000 to 250,000	80,000 to 400,000	25,000 to 250,000	80,000 to 400,000	25,000 to 250,000
May 1 - Jun 30, 2015	300,000	250,000	144,735	115,124	155,265	134,876	300,000	250,000
July 1 - Aug 31, 2015	290,000	175,000	14,540	82,393	275,460	92,607	400,000	250,000
Sep 1 - Oct 31, 2015		180,000		26,320		153,680		250,000
Sep 1, 2015 - Feb 28, 2016	160,000		105,154		NA		400,000	
Nov 1, 2015 - Feb 28, 2016		65,000		243,855		NA		250,000
Total	750,000	675,000	264,429	467,692	430,725	341,163	750,000 <sup>b</sup>	675,000 <sup>b</sup>

<sup>b</sup> Total harvest is still constrained to the preseason GHSL, the increased GHLS in periods 2-4 shown in the “Adjusted GHSL” columns include rollover of pounds not harvested in the previous periods.

NA: Last period

#### Fish ticket and logbook completion

**Logbooks are required in non-traditional areas only [5 AAC 31.111 (a) (3)], however fishermen are encouraged to participate in the voluntary logbook program for traditional areas.** Logbooks are available in the Wrangell, Petersburg, and Douglas offices. Logbooks must be completed and attached to the corresponding fish tickets upon landing. Fishermen are also reminded that they are required by regulation to report on fish tickets at the time of landing any shrimp harvested which are not purchased by the processor or buyer, or which have been discarded at sea [5 AAC 31.075 (a)]. Each buyer shall indicate on the fish ticket the gross weight of shrimp not purchased from a load [5 AAC 31.075 (b)]. In order to more easily track spot and coonstripe bycatch trip limits, fishermen are also asked to submit a copy of their fish ticket or dock slip from their pink and sidestripe landing when selling spot and coonstripe bycatch to a separate buyer. The spot and coonstripe bycatch buyer shall then attach the copy of the fish ticket or dock slip from the pink and sidestripe landing to the ADF&G copy of the ticket they complete. **All fish tickets must be submitted to ADF&G within seven days of delivery [5 AAC 39.130 (c)].**

#### Catcher-processor reporting requirements

A catcher-processor is a commercial fisherman who catches and processes their own product on board [5 AAC 31.143(e)(2)]. A catcher-processor cannot buy or process shrimp from another fishing vessel or tender.

Each week an owner or operator of a shrimp beam trawl catcher-processor vessel operating in the waters of Registration Area A shall contact, by telephone, the ADF&G area office in Douglas (907-465-6393) before 12:00 noon Wednesday during normal business hours of 8:00 am through 5:00 pm; the following information must be provided at the time of contact:

- 1) permit holder's name;
- 2) vessel name and ADF&G number;
- 3) the following information regarding ADF&G fish tickets;
  - a) ADF&G fish ticket number of each fish ticket used since last contact;
  - b) date of landing on each fish ticket;
  - c) district and statistical area on each fish ticket;
  - d) total trawling bottom time, for each district and subdistrict for the preceding week;
  - e) total pounds of whole shrimp taken by species;

- 4) date of last delivery;
- 5) any other information the commissioner determines is necessary for the conservation and management of the fishery.

Pounds of whole shrimp by species since the last call-in and cumulative pounds of whole shrimp on board since the last delivery should match what is reported on daily fish tickets and entered in required logbooks. The total time as reported during call-ins should be the summation for all hauls of the time the trawl was on the bottom, since the last call-in, and should match what is entered in required logbooks. Fish tickets must be submitted to ADF&G within seven days of the closure of a district or portion of a district for which a distinct guideline harvest level exists. A shrimp beam trawl catcher-processor vessel that has stopped fishing in a district or portion of a district for which a distinct guideline harvest level exists shall contact, by telephone or in person, the Douglas ADF&G area office and report the information specified in this paragraph before fishing in a new district or portion of a district with a GHF established by ADF&G [5 AAC 31.143 (c) (2)]. ADF&G intends to provide adequate notice of pending closures but fishermen should be aware that it is their responsibility to stay informed as to when a closure may occur. To keep catch information confidential, each catcher-processor should contact the Douglas ADF&G office to arrange a catch-reporting schedule.

#### Catcher-seller reporting requirements

A catcher-seller is a commercial fisherman who catches and either sells or attempts to sell unprocessed shrimp to a person not licensed to process shrimp [5 AAC 31.143(e)(3)]. The owner or operator of a catcher-seller vessel must complete a fish ticket indicating the weight of the shrimp on board by species before any shrimp are removed from the vessel.

#### Rockfish possession and landing requirements for the Eastern Gulf of Alaska area

All fishermen participating in the beam trawl fishery for shrimp in Southeast Alaska must retain, weigh, and report all demersal shelf rockfish by species on the fish ticket [5 AAC 28.171 (b)]. Beam trawl permit holders are allowed a combined demersal shelf rockfish bycatch of 1% of the directed shrimp catch. Demersal shelf rockfish species include Canary, China, Copper, Quillback, Rosethorn, Tiger, and Yelloweye rockfish. The bycatch percentage is calculated based on the round weight of rockfish divided by the whole weight of shrimp. This bycatch of rockfish can be sold, used for personal use, given away, etc, but must be weighed and reported on the shrimp fish ticket. Bycatch in excess of allowable limits shall be reported by species as an overage on ADF&G fish tickets. Proceeds from the sale of excess rockfish bycatch shall be surrendered to the state.

#### Duel Registration with Dungeness Fishery

The Alaska Board of Fisheries adopted duel fishery registration restrictions for the Southeast Alaska Beam Trawl and Dungeness fisheries in January 2012 [5 AAC 31.128]. A vessel may not be registered for the commercial beam trawl shrimp fishery and the commercial Dungeness crab fishery at the same time. However, a vessel owner, or the owner's agent, may cancel a vessel's registration for the commercial beam trawl shrimp fishery and register a vessel for the commercial Dungeness crab fishery by contacting a local ADF&G representative, in person, and providing all requested information.

#### Other information

Fishermen are also reminded to review pertinent regulations on pages 1–22 of the 2015–2018 Statewide Commercial Shrimp, Dungeness crab, and Miscellaneous Shellfish Fishing Regulations booklet, and page 13 of the 2016–2017 Statewide Commercial Groundfish Fishing Regulations booklet.

News releases web site: <http://www.adfg.alaska.gov/index.cfm?adfg=cfnews.main>.

<i>Office</i>	<i>Ketchikan</i>	<i>Petersburg</i>	<i>Wrangell</i>	<i>Sitka</i>	<i>Juneau</i>	<i>Haines</i>	<i>Hoonah</i>	<i>Yakutat</i>
<i>ADF&amp;G</i>	225-5195	772-3801	874-3822	747-6688	465-4250	766-2830		784-3255
<i>AWT</i>	225-5111	772-3983	874-3215	747-3254	465-4000		945-3620	