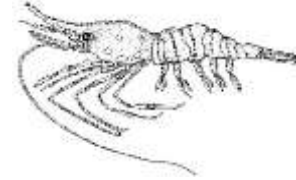


**ALASKA DEPARTMENT OF FISH AND GAME
DIVISION OF COMMERCIAL FISHERIES
NEWS RELEASE**



*Sam Cotten, Commissioner
Scott Kelley, Director*



Contact:
Jan Rumble, Area Shellfish Management Biologist
Elisa Russ, Shellfish Management Biologist

Homer Area Office
3298 Douglas Place
Homer, Alaska 99603

Phone: (907) 235-8191
Fax: (907) 235-2448

Date Issued: 4/5/17

**FISHERY ANNOUNCEMENT
PRINCE WILLIAM SOUND COMMERCIAL SHRIMP POT FISHERY
SEASON AND VESSEL POT LIMITS
EMERGENCY ORDER 2-SF-E-02-17**

SEASON, AREA, AND GEAR

Registration for the Prince William Sound (PWS) Area E commercial shrimp pot fishery closed at 5:00 p.m. April 3 with 83 vessels registered to harvest the 67,000 lb guideline harvest level (GHL). The first PWS commercial shrimp pot fishing period will open at 8:00 a.m. April 15 and close at 8:00 p.m. April 25. **Gear limits are initially set at a maximum of 40 shrimp pots per vessel. Fishing hours during this initial period are set by emergency order at 8:00 a.m. to 8:00 p.m.** The announcement of future fishing periods will be dependent upon prompt catch reporting and harvest levels.

The area open to commercial fishing includes waters described in emergency order 2-SF-E-02-17 (Figure 1). Waters within this area closed to commercial shrimping with pot gear are described in regulation 5 AAC 31.235(b).

Shrimp pot gear may only be deployed and retrieved between the hours of 8:00 a.m. and 8:00 p.m. during the open fishing period and may not be stored in the water or deployed prior to the opening of the season. A vessel operator may not have more than the legal limit of pot gear in aggregate, on board the vessel or in the water at any time. Shrimp pots deployed on a longline with six or more pots, must have a buoy attached to each end of the longline (5AAC 31.226).

After a fishing period or season closure, shrimp pots may be stored in saltwater only if all bait and bait containers have been removed and all doors have been secured fully open and for no more than 14 days (5AAC 31.052). All shrimp pots must have a biodegradable escape mechanism as described in 5 AAC 39.145.

OTHER INFORMATION

Fishermen are reminded of the inseason **reporting and landing requirements** specified on the registration form and in regulation 5 AAC 31.245. **All commercial shrimp pot vessels must call the reporting line at (907) 424-7215 no earlier than 24 hours before fishing during each trip** and provide the following information:

- 1) CFEC permit holders name,
- 2) Vessel name and ADF&G license number of the registered vessel,
- 3) Trip information:
 - a) Number of pots intended to be operated from the vessel,
 - b) Statistical area the operator of the vessel is intending to fish, and
 - c) Intended length of the trip.

Additionally, **before landing shrimp**, all those operating commercial shrimp pot fishery vessels must call the reporting line at (907) 424-7215 and report the information requested on the harvest reporting form supplied in the registration packet.

The PWS shrimp pot fishery will be managed out of the Homer office this season. Contact ADF&G at (907) 235-8191 to arrange alternate reporting requirements during the early season; otherwise, follow the reporting instructions on your registration form. Use the shrimp harvest report form supplied in the registration packet as a reference when calling the reporting line at (907) 424-7215 to ensure a complete report.

All commercially harvested shrimp, whether sold or retained for personal use, must be reported on an ADF&G fish ticket (5 AAC 39.130). A vessel operator intending to land shrimp outside of the registration area must contact the department (907-235-8191) prior to departing Registration Area E and specify the amount of shrimp by weight on board the vessel. A vessel registered for the fishery may not have shrimp on board the vessel after 72 hours following the closure of the fishing period or season (5 AAC 31.031).

The department will be managing the fishery inseason to restrict harvest to no more than 50 percent of the GHF from any one statistical area (5 AAC 31.214). Inseason measures may include adjusting pot limits, time, and/or statistical area closures in order to remain within this limit. Fishery announcements regarding adjustments will be available on the harvest reporting message line at (907) 424-7215.

A vessel used to tender shrimp must register with the department prior to operating in the fishery. **Tenders may not have shrimp gear or equipment aboard or be used to fish for shrimp (5 AAC 31.033).**

A person or vessel that has registered for the commercial shrimp pot fishery may not participate in sport, personal use, or subsistence fishing for shrimp unless the person ceases commercial fishing and the commercial registration for the vessel is cancelled by the department (5 AAC 31.227). Other regulations may apply; the requirements of this section are in addition to the requirements of 5 AAC 31.053.

Other pertinent fishery regulations are listed in Chapters 31 and 39 of the **2015-2018 Statewide Commercial Shrimp, Dungeness Crab, and Miscellaneous Shellfish Fishing Regulations**

booklet available at department offices in Anchorage, Cordova, and Homer or at <http://www.adfg.alaska.gov/index.cfm?adfg=fishregulations.commercial>.

-end-

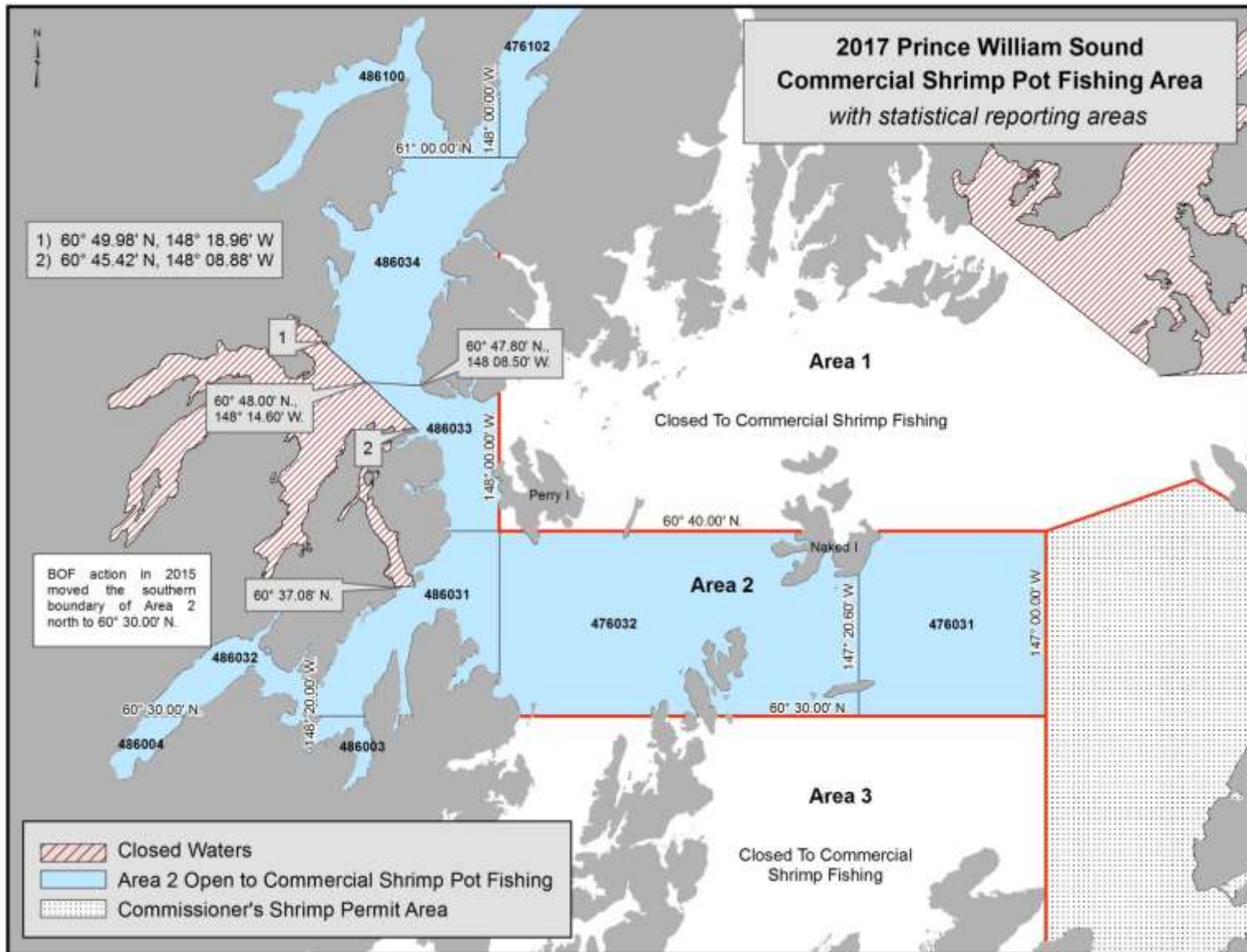


Figure 1. 2017 Prince William Sound commercial shrimp pot fishing area.