

---

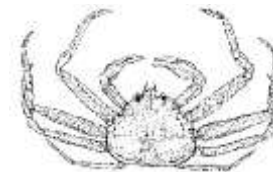
# ALASKA DEPARTMENT OF FISH AND GAME

## DIVISION OF COMMERCIAL FISHERIES

### NEWS RELEASE



*Sam Cotten, Commissioner*  
*Scott Kelley, Director*




---

<p>Contact: Joe Stratman Kellii Wood Phone: (907) 772-5238 Fax: (907) 772-9336</p>	<p>(907) 772-5222 (907) 465-4944</p>	<p>Petersburg Area Office P.O. Box 667 Petersburg, Alaska 99833 Date: February 17, 2017 Time: 10:15 a.m.</p>
--	--	--

---

#### SOUTHEAST COMMERCIAL TANNER CRAB FISHING SEASON ANNOUNCEMENT

Petersburg . . . The Registration Area A Tanner crab harvest strategy [5 AAC 35.113] establishes commercial Tanner crab fishing season length using estimated mature male biomass and the number of registered pots at the start of the fishery. As of 9:20 a.m., Friday, February 17, 2017, there are 58 pot vessels and 4,640 pots registered for the 2016/2017 commercial Tanner crab fishery. At the current estimated mature male biomass and effort level of 4,640 registered pots, the harvest strategy provides one additional day of season length in “core” and “non-core” areas. The 2016/2017 commercial Tanner crab fishery in Southeast Alaska will open in “core” and “non-core” areas (described in 5 AAC 35.113(c)) at 12:00 noon on **Friday, February 17, 2017**. The season will close in “core” fishing areas after six fishing days at 12:00 noon on **Thursday, February 23, 2017**, and close in “non-core” areas after eleven fishing days at 12:00 noon on **Tuesday, February 28, 2017**.

Shellfish management staff will be available in Juneau/Douglas and Petersburg for permit holders during the duration of the Tanner fishery, including weekends on an “on-call” capacity. For assistance February 18-19, shellfish management staff in Juneau/Douglas can be reached at (907) 723-3342 and in Petersburg at (907) 518-0755. For assistance February 25-26, shellfish management staff in Juneau/Douglas can be reached at (907) 723-3342, and in Petersburg at (907) 772-5236.

The Emergency Order corresponding with this announcement is EO 1C0317.

News releases web site: <http://www.adfg.alaska.gov/index.cfm?adfg=cfnews.main>.

Office	Ketchikan	Petersburg	Wrangell	Sitka	Juneau	Haines	Hoonah	Yakutat
ADF&G	225-5195	772-3801	874-3822	747-6688	465-4250	766-2830		784-3255
AWT	225-5111	772-3983	874-3215	747-3254	465-4000	766-2533	945-3620	784-3255