

**ALASKA DEPARTMENT OF FISH AND GAME  
DIVISION OF COMMERCIAL FISHERIES  
NEWS RELEASE**



*Sam Cotten, Commissioner  
Scott Kelley, Director*



Contact:  
Maria Wessel, Groundfish Management Biologist  
Phone: (907) 424-3212  
Fax: (907) 424-3235

Cordova Office  
P.O. Box 669  
Cordova, AK. 99574  
Date Issued: 3/9/2016

**FISHERY ANNOUNCEMENT  
PRINCE WILLIAM SOUND AREA E  
STATE-WATERS PACIFIC COD SEASON CLOSING TO POT GEAR  
PARALLEL PACIFIC COD SEASON OPENING TO POT GEAR  
EMERGENCY ORDERS # 2-GF-E-01-16 AND # 2-GF-E-07-16**

The Prince William Sound (PWS) Area E **state-waters Pacific cod season will close to pot gear effective 12:00 noon March 12, 2016 and a parallel Pacific cod season will immediately open to pot gear.** These actions coincide with the National Marine Fisheries Service (NMFS) reopening of directed fishing for groundfish by pot gear in the Gulf of Alaska (GOA) and is necessary to fully use the A season allowance of the 2016 total allowable catch of Pacific cod specified for vessels using pot gear in the Central Regulatory Area of the GOA.

Fishermen are reminded that they must possess a valid ADF&G PWS 2016 **parallel Pacific cod season registration** in order to participate in the fishery and a vessel may only be registered to fish with a single gear type. Participants using pot gear in parallel Pacific cod fisheries must have a functioning, NMFS approved, vessel monitoring system (VMS) as described at <https://alaskafisheries.noaa.gov/sustainablefisheries/vms/>. In addition, seabird avoidance measures (SAM) must be used in all longline fisheries for groundfish in state waters except the Inside District of PWS (<http://alaskafisheries.noaa.gov/protectedresources/seabirds/guide.htm>).

There is a 24-hour delivery time requirement following closure of a groundfish fishery (5 AAC 28.271).

The state-waters Pacific cod season will remain open to vessels using jig gear.

**Steller Sea Lion rookery closures:** Directed fishing for all groundfish species is closed in waters within 3 nautical miles of two Steller sea lion rookeries within PWS (Figure 1). For specific regulatory language contact NMFS in Kodiak at (907) 481-1780 or <http://alaskafisheries.noaa.gov/regs/679b22.pdf>.

**Bycatch limits:** Bycatch limits by species or species aggregate for the Prince William Sound Management Area state-waters Pacific cod fishery are set as follows by Emergency Order 2-GF-E-01-16, as round weight of bycatch as a percentage of the round weight of the target species:

- (1) may retain 5 percent skate species in aggregate;
- (2) may retain 15 percent shark species in aggregate (includes spiny dogfish);
- (3) must retain all pollock;
- (4) must retain all rockfish (and thornyhead) as required by 5 AAC 28.265 and any rockfish in excess of 5 percent in aggregate must be weighed and reported as bycatch overage on an ADF&G fish ticket;
  - (A) no rockfish landing or combination of landings may exceed the 5-day trip limit of 3,000 pounds
- (5) may retain 20 percent other groundfish in aggregate;
- (6) may not retain lingcod prior to July 1; after July 1 may retain 20 percent lingcod.

For additional information, contact ADF&G in Cordova, at 907-424-3212.

-continued-

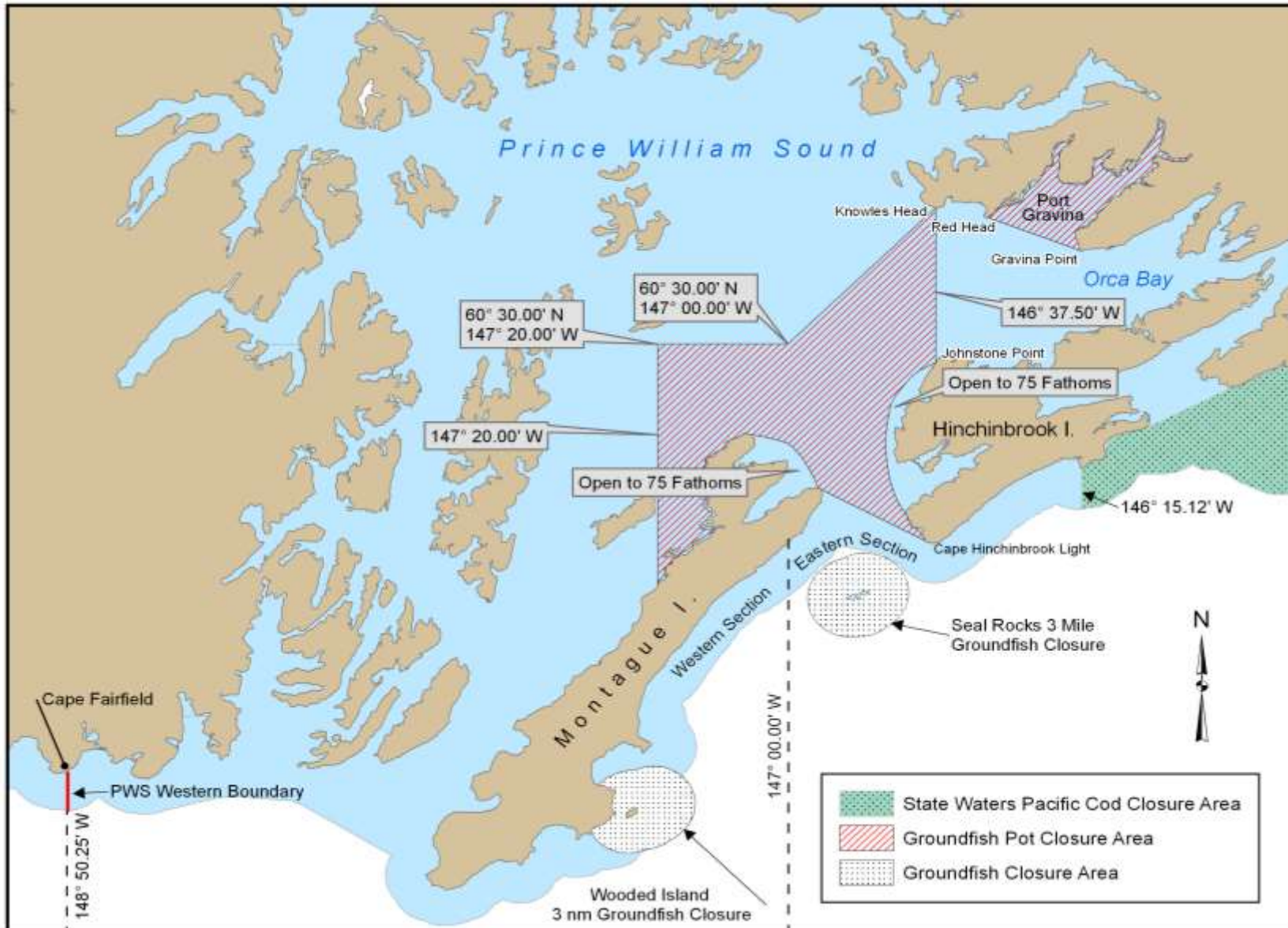


Figure 1. Prince William Sound closures to groundfish pot gear, groundfish fishing, and to the state-waters Pacific cod season.

-end-