

**ALASKA DEPARTMENT OF FISH AND GAME  
DIVISION OF COMMERCIAL FISHERIES  
NEWS RELEASE**



*Sam Cotten, Commissioner  
Jeff Regnart, Director*



---

Contact:  
Maria Wessel, Groundfish Management Biologist

Cordova Area Office  
P.O. Box 669  
Cordova, Alaska 99574

Phone: (907) 424-3212  
Fax: (907) 424-3235

Date Issued: 4/14/2015

**PRINCE WILLIAM SOUND COMMERCIAL  
SABLEFISH TAGGING SURVEY  
LOST POT GEAR UPDATE**

The Alaska Department of Fish and Game (ADF&G), Commercial Fisheries Division was conducting a sablefish tagging survey in Prince William Sound when a string of gear was lost after being run over by tugs towing barges that were travelling through the area in the vicinity of the gear.

The fishing gear was composed of 29 sablefish pots set on 1.2 miles of groundline. Both ends of the gear were anchored with 400 fathoms of buoy line with buoy sets of three buoys each. The gear was set on March 7, 2015 with starting location at 60° 29.623' N., 147° 50.015' W., and end set location at 60° 28.443' N., 147° 50.529' W (Figure 1).

On March 8, the state vessel *R/V Pandalus* set up a drag line to drag perpendicular to where the gear was set. The drag location started at 60° 29.330' N., 147° 50.552' W., and ended at 60° 29.057' N., 147° 49.227' W. On March 14, the *R/V Pandalus* went back out to search for the gear. The *Pandalus* ran from 3 miles north of gear start location to 14 miles south of the end location but did not find the gear. The lost gear does not pose a navigation hazard. However, ADF&G wanted fishermen in this area to be aware of the lost gear.

For additional information, contact ADF&G in Cordova, at 907-424-3212.

-end-

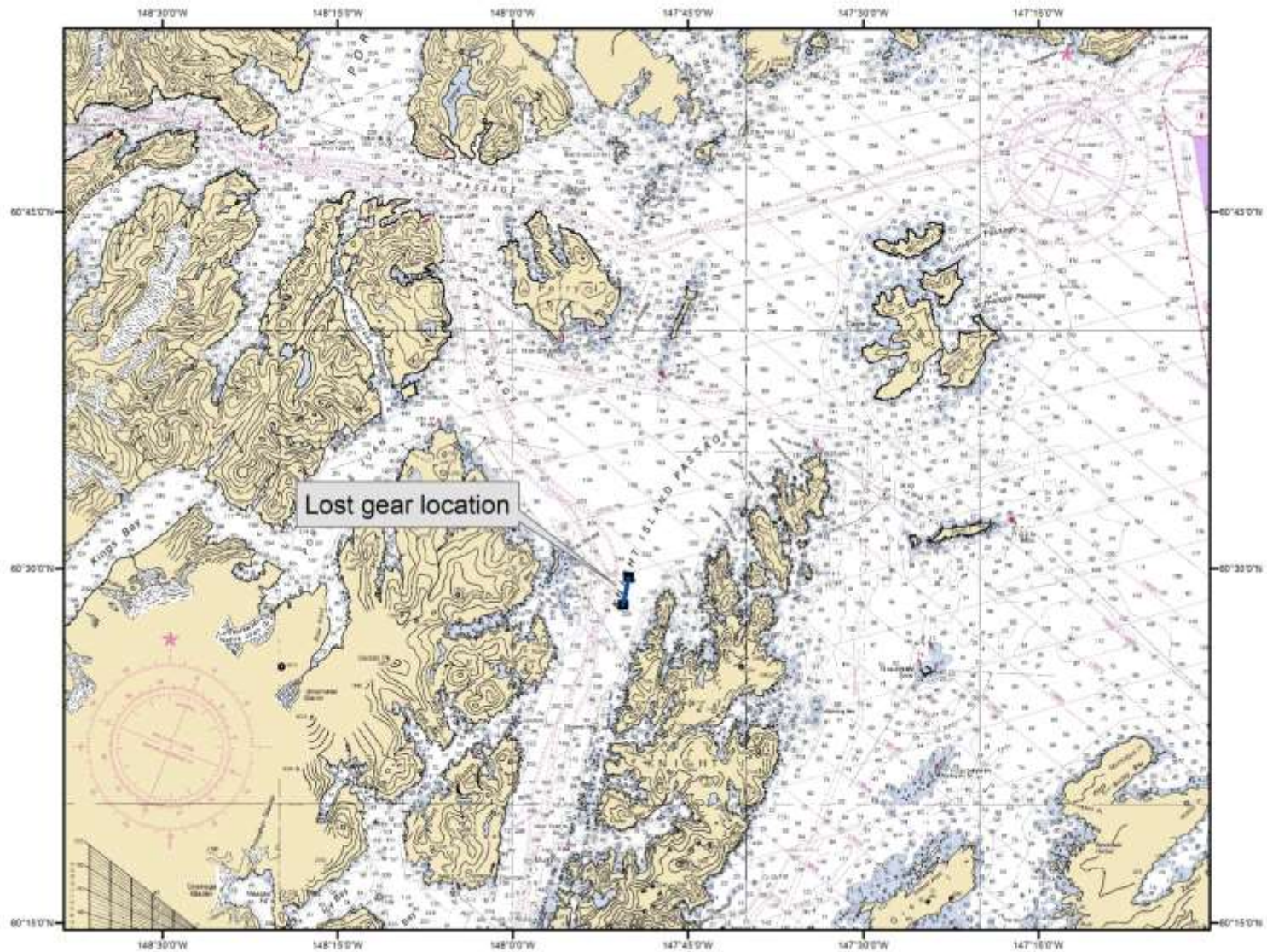


Figure 1. Location of pot gear lost in Prince William Sound, March 2015.