

ALASKA DEPARTMENT OF FISH AND GAME
DIVISION OF COMMERCIAL FISHERIES
NEWS RELEASE



Cora Campbell, Commissioner
Jeff Regnart, Director



Contact: Pat Shields, Area Management Biologist; Aaron Dupuis, Asst. Area Management Biologist
43961 Kalifornsky Beach Rd, Suite B Soldotna, AK 99669
Phone: (907) 262-9368 Fax: (907) 262-4709
Date Issued: July 22, 2014 Time: 11:00 a.m.

UPPER COOK INLET COMMERCIAL FISHING ANNOUNCEMENT No. 32
EMERGENCY ORDER NUMBER 2S-32-14

Upper Cook Inlet Commercial Fishing Announcement No. 32 extends commercial fishing with set gillnets in the Kasilof River Special Harvest Area (KRSHA; Figure 1) from 1:00 p.m. on Tuesday, July 22 until 3:00 p.m. on Wednesday, July 23, 2014.

This announcement also extends commercial fishing with drift gillnets in the KRSHA from 1:00 p.m. until 11:00 p.m. on Tuesday, July 22, 2014 and from 5:00 a.m. until 3:00 p.m. on Wednesday, July 23, 2014.

Due to enforcement issues with the outside boundaries of the KRSHA, closure of the drift fishery during the hours of darkness is warranted.

No drift gillnet may be operated closer than 600 feet of any of the set gillnet buoys or set gillnets in the normally open set gillnet area. The riverside closed area is a straight line drawn between the two commercial markers located in the river terminus. The offshore limit of this area is bounded by the following four points: 1) 60° 22.590' N. lat., 151° 20.793' W. long; 2) 60° 23.832' N. lat., 151° 21.703' W. long; 3) 60° 24.130' N. lat., 151° 21.335' W. long; 4) 60° 24.130' N. lat.; 151° 17.720' W. long. Specifics of this plan are on pages 23-24 of the current regulation book.

The boundary between those waters open to set gillnetting and drift gillnetting is bounded by the following four points: 5) 60° 22.770' N. lat., 151° 20.930' W. long; 6) 60° 23.230' N. lat., 151° 19.310' W. long; 7) 60° 23.560' N. lat., 151° 18.170' W. long; and 8) 60° 24.130' N. lat. 151° 18.120' W. long.

During the fishing period in the KRSHA, the navigation channel is closed to all commercial fishing with set gillnet gear including nets and anchor lines. The outside terminal area boundaries are approximately 600 feet south of the normal commercial regulatory marker located one mile

north of the Kasilof River to 600 feet north of the normal commercial regulatory marker located one mile south of the Kasilof River.

Any fish caught in the KRSHA should be delivered on a separate fish ticket using statistical area 244-25 for set gillnet and 244-26 for drift gillnet.

The biological escapement goal (BEG) for Kasilof River sockeye salmon is 160,000–340,000 fish, while the optimal escapement goal (OEG) is 160,000–390,000 fish. More than 348,000 sockeye salmon are estimated to have passed the Kasilof sonar through July 21. This level of passage is in excess of the upper end of the BEG. Run timing models project final escapements in excess of the OEG in the Kasilof River.

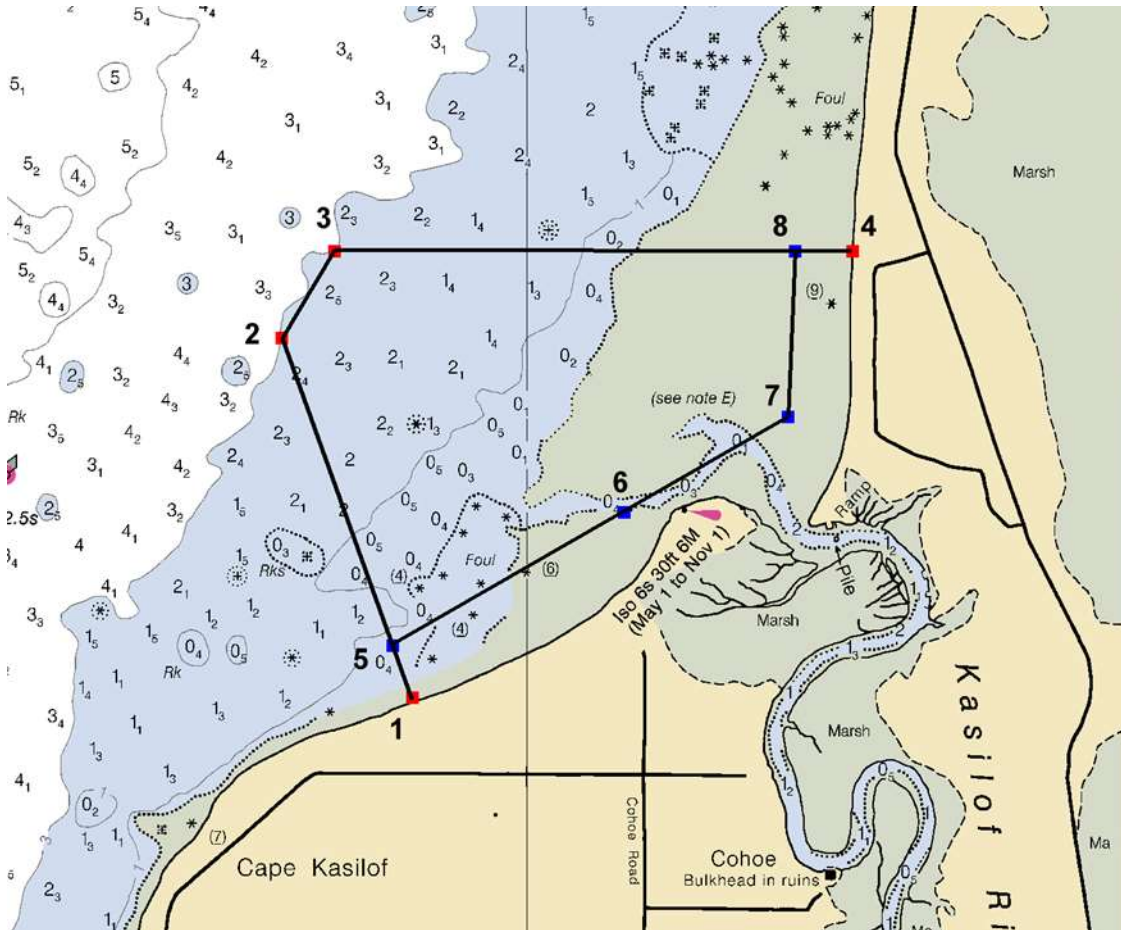


Figure 1. Map of the Kasilof River Terminal Harvest Area with waypoint boundaries.

Waypoint 1: 60° 22.590' N. lat. 151° 20.793' W. long.

Waypoint 2: 60° 23.832' N. lat. 151° 21.703' W. long.

Waypoint 3: 60° 24.130' N. lat. 151° 21.335' W. long.

Waypoint 4: 60° 24.130' N. lat. 151° 17.720' W. long.

Waypoint 5: 60° 22.770' N. lat. 151° 20.930' W. long.

Waypoint 6: 60° 23.230' N. lat. 151° 19.310' W. long.

Waypoint 7: 60° 23.560' N. lat. 151° 18.170' W. long.

Waypoint 8: 60° 24.130' N. lat. 151° 18.120' W. long.