

**ALASKA DEPARTMENT OF FISH AND GAME**  
**DIVISION OF COMMERCIAL FISHERIES**  
**NEWS RELEASE**



*Cora Campbell, Commissioner*  
*Jeff Regnart, Director*



---

Contact: Pat Shields, Area Management Biologist; Aaron Dupuis, Asst. Area Management Biologist  
43961 Kalifornsky Beach Rd, Suite B Soldotna, AK 99669  
Phone: (907) 262-9368 Fax: (907) 262-4709  
Date Issued: July 11, 2014 Time: 7:30 p.m.

---

**UPPER COOK INLET COMMERCIAL FISHING ANNOUNCEMENT No. 14**  
**EMERGENCY ORDER NUMBER 2S-14-14**

Upper Cook Inlet Commercial Fishing Announcement No. 14 opens commercial salmon fishing with drift gillnets in Drift Gillnet Area 1 and the Expanded Kenai and Expanded Kasilof sections (Figure 1) of the Upper Subdistrict on Saturday, July 12, 2014 from 7:00 a.m. until 7:00 p.m.

The biological escapement goal (BEG) for Kasilof River sockeye salmon is 160,000–340,000 fish, while the optimal escapement goal (OEG) is 160,000–390,000 fish. More than 217,000 sockeye salmon are estimated to have passed the Kasilof sonar through July 10. Even early run timing models project final escapements in excess of either the BEG or OEG in the Kasilof River.

The Kenai River inriver (sonar) goal is 1,000,000 to 1,200,000 sockeye salmon for the expected run size of 2.3 to 4.6 million fish. Through July 10, more than 171,000 sockeye salmon are estimated to have passed the Kenai River sonar. Even early run timing models project final sonar passage in excess of the inriver goal in the Kenai River.

According to 5 AAC 21.353(c)(2) *Central District Drift Gillnet Fishery Management Plan*, at run strengths greater than 2.3 million sockeye salmon to the Kenai River, the commissioner may, by emergency order, open one additional 12-hour fishing period in the Expanded Kenai and Expanded Kasilof Sections of the Upper Subdistrict and Drift Gillnet Area 1. This announcement opens drift gillnetting in the areas described above in order to reduce the rate of sockeye salmon passage in the Kenai and Kasilof rivers.

During this fishing period, fishing with drift gillnets in the Expanded Kenai and Expanded Kasilof sections within one mile of the mean high tide mark north of the Kenai River and within one and one-half miles of the mean high tide mark south of the Kenai River is closed.

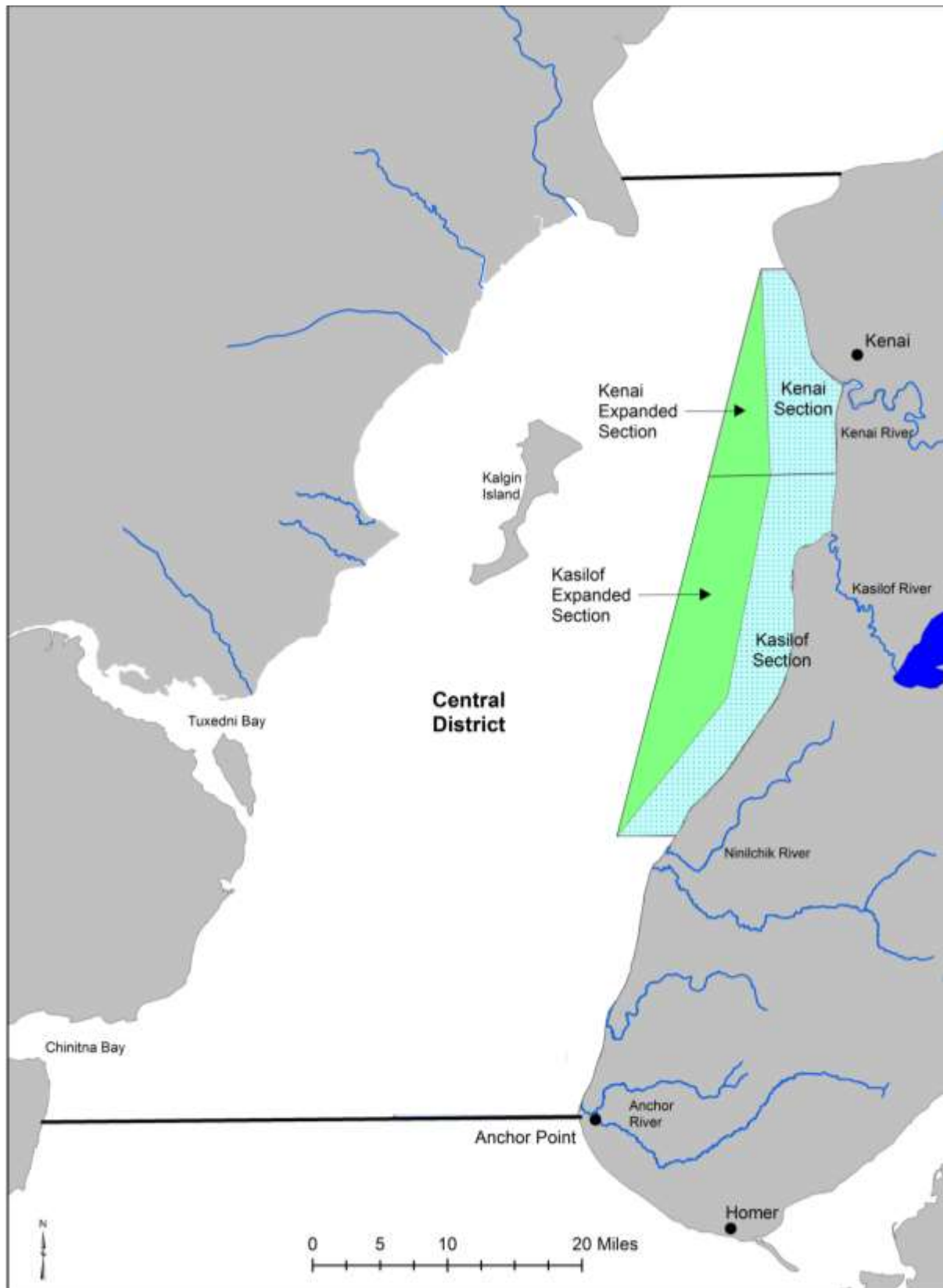


Figure 1. Map of the Expanded Kasilof and Expanded Kenai sections with waypoints.