

**ALASKA DEPARTMENT OF FISH AND GAME
DIVISION OF COMMERCIAL FISHERIES
NEWS RELEASE**



*Cora Campbell, Commissioner
Jeff Regnart, Director*



Contact:
Maria Wessel, Groundfish Management Biologist

Phone: (907) 424-3212
Fax: (907) 424-3235

Cordova Office
P.O. Box 669
Cordova, AK. 99574
Date Issued: 3/10/2014
Time: 2:00 p.m.

**FISHERY ANNOUNCEMENT
PRINCE WILLIAM SOUND AREA-E
PARALLEL PACIFIC COD SEASON CLOSING TO POT GEAR
STATE-WATERS PACIFIC COD SEASON OPENING TO POT GEAR
EMERGENCY ORDERS # 2-GF-E-06-14 AND # 2-GF-E-08-14**

The Prince William Sound (PWS) Area E parallel Pacific cod season will **close to longline gear effective 12:00 noon, March 11, 2014**. This coincides with the National Marine Fisheries Service (NMFS) closure of the Pacific cod less than 50 foot hook-and-line sector in the federal Central Gulf of Alaska (CGOA) area. Fishermen are reminded that there is a 24-hour delivery time requirement following closure of a groundfish fishery.

The PWS **state-waters Pacific cod season will open to longline gear at 12:00 noon, March 18, 2014**, with a guideline harvest level (GHL) of 1.46 million pounds and will close when 85 percent of the GHL (1.24 million pounds) is reached. **Big skate closed to retention as bycatch in PWS waters by EO (#2-GF-E-06-14) on February 6, 2014**, and lingcod may not be retained prior to July 1. Detailed bycatch limits are listed below.

The PWS parallel Pacific cod season will remain open to jig gear and its closure will coincide with the federal closure to jig gear in the CGOA. **A vessel may not simultaneously participate in a state-waters season and any other concurrent Pacific cod season, including those in federal waters.**

For the state-waters Pacific cod season, area registration is exclusive; legal gear is currently limited to longline or up to 60 pots and each pot must display a buoy identification tag. Buoy tags and vessel registrations may be obtained from department offices in Homer and Cordova or from Department of Public Safety in Seward.

Fishing area: During a state-waters season, Pacific cod may be taken in waters of the PWS Area (5 AAC 28.205) except for those waters of the Outside District east of 146° 15.12' W. long. (the latitude of Hook Point) (5 AAC 28.267. (e) (2)).

Pot fishing closure areas: Waters closed to the use of groundfish pot gear are defined in 5AAC 28.250. Consult the current regulation booklet and attached map (Figure 1) prior to fishing.

Steller Sea Lion rookery closures: Directed fishing for all groundfish species is closed in waters within 3 nautical miles of two Steller sea lion rookeries within PWS (Figure 1). For specific regulatory language contact NMFS in Kodiak at (907) 481-1780 or <http://alaskafisheries.noaa.gov/regs/679b22.pdf>.

Bycatch limits: Bycatch limits by species or species aggregate for the Prince William Sound Management Area state-waters Pacific cod fishery are set as follows by Emergency Order 2-GF-E-06-14 as round weight of bycatch as a percentage of the round weight of the target species:

- (1) may retain 15 percent skate species in aggregate except;
 - (A) may not retain big skate after 12:00 noon February 6;
- (2) may retain 15 percent shark species in aggregate (includes spiny dogfish);
- (3) must retain all pollock;
- (4) must retain all rockfish (and thornyhead) as required by 5 AAC 28.265 and any rockfish in excess of 5 percent in aggregate must be weighed and reported as bycatch overage on an ADF&G fish ticket;
 - (A) no rockfish landing or combination of landings may exceed the 5-day trip limit of 3,000 pounds
- (5) may retain 20 percent other groundfish in aggregate;
- (6) may not retain lingcod prior to July 1; after July 1 may retain 20 percent lingcod.

For additional information, contact ADF&G in Cordova, at 907-424-3212.

-continued-

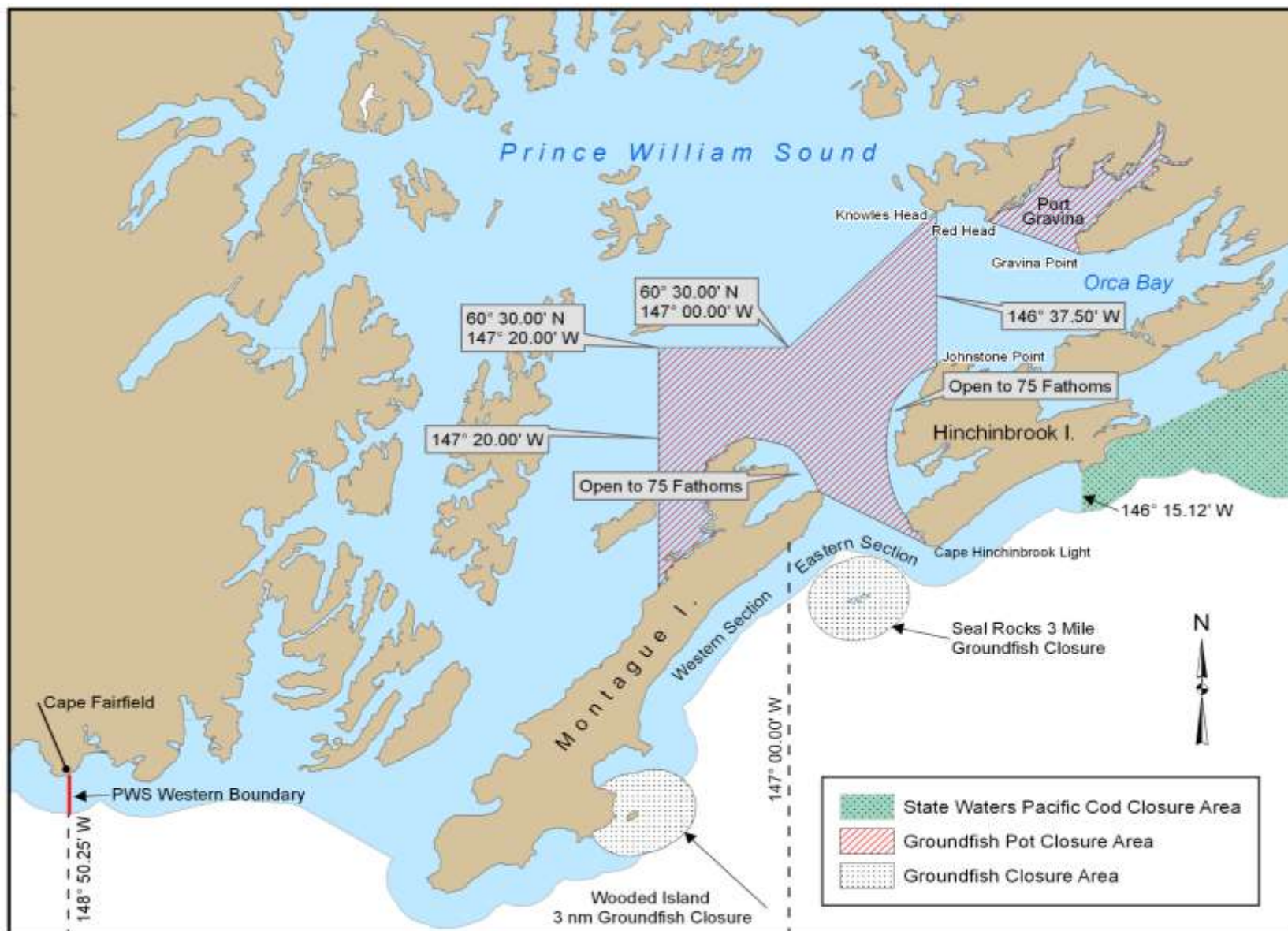


Figure 1. Prince William Sound closures to groundfish pot gear, groundfish fishing, and to the state-waters Pacific cod season.

-end-