

Division of Commercial Fisheries
Forrest Bowers, Acting Director

Sitka Area Office
304 Lake Street Room 103
Sitka, AK 99835



Alaska Department of Fish and Game
Doug Vincent-Lang, Commissioner

PO Box 115526
Juneau, AK 99811-5526
www.adfg.alaska.gov

Advisory Announcement
For Immediate Release: April 15, 2026

CONTACT: Grant Hagerman
Region I Commercial Troll Management Biologist
grant.hagerman@alaska.gov
(907) 747-6688

GUNNUK CREEK TERMINAL HARVEST AREA TROLL FISHERY

The **Gunnuk Creek Terminal Harvest Area (THA)** commercial salmon troll fishery will open for the harvest of all salmon from 12:01 a.m., Monday, June 1, through 11:59 p.m., Tuesday, June 30, 2026, unless closed by emergency order. The Northern Southeast Regional Aquaculture Association is forecasting a total run of approximately 18,000 hatchery-produced chum salmon and 310 hatchery-produced Chinook salmon to the Gunnuk Creek THA.

The Gunnuk Creek THA (**statistical area 109-40**) consists of the waters of Keku Strait enclosed by a line from a point northwest of Kake at 56°58.92' N lat, 133°57.48' W long to the southernmost tip of the southern Mosquito Island at 56°58.22' N lat, 133°58.85' W long to the northwest tip of Hamilton Island at 56°56.45' N lat, 133°55.66' W long to Wooten's Dock at 56°57.55' N lat, 133°54.78' W long.

Chinook salmon retention is permitted in the THA during the spring troll fishery from June 1 through June 30. Beginning at 12:01 a.m., July 1, the waters of Gunnuk Creek THA remain open to troll gear as part of the common property traditional summer troll fishery, with Chinook salmon retention and possession allowed only during open Chinook salmon retention periods established for the summer troll fishery under 5 AAC 29.100(c).

The Emergency Order corresponding to this announcement is EO 1E0826.

Advisory Announcement web site: <http://www.adfg.alaska.gov/index.cfm?adfg=cfnews.main>.

Office	Ketchikan	Petersburg	Sitka	Juneau	Haines	Hoonah	Yakutat
ADF&G	225-5195	772-3801	747-6688	465-4250	766-2830		784-3255
AWT	225-5111	772-3983	747-3254	465-4000		945-3620	
Troll Hotline	225-6870		747-8765	465-8765			

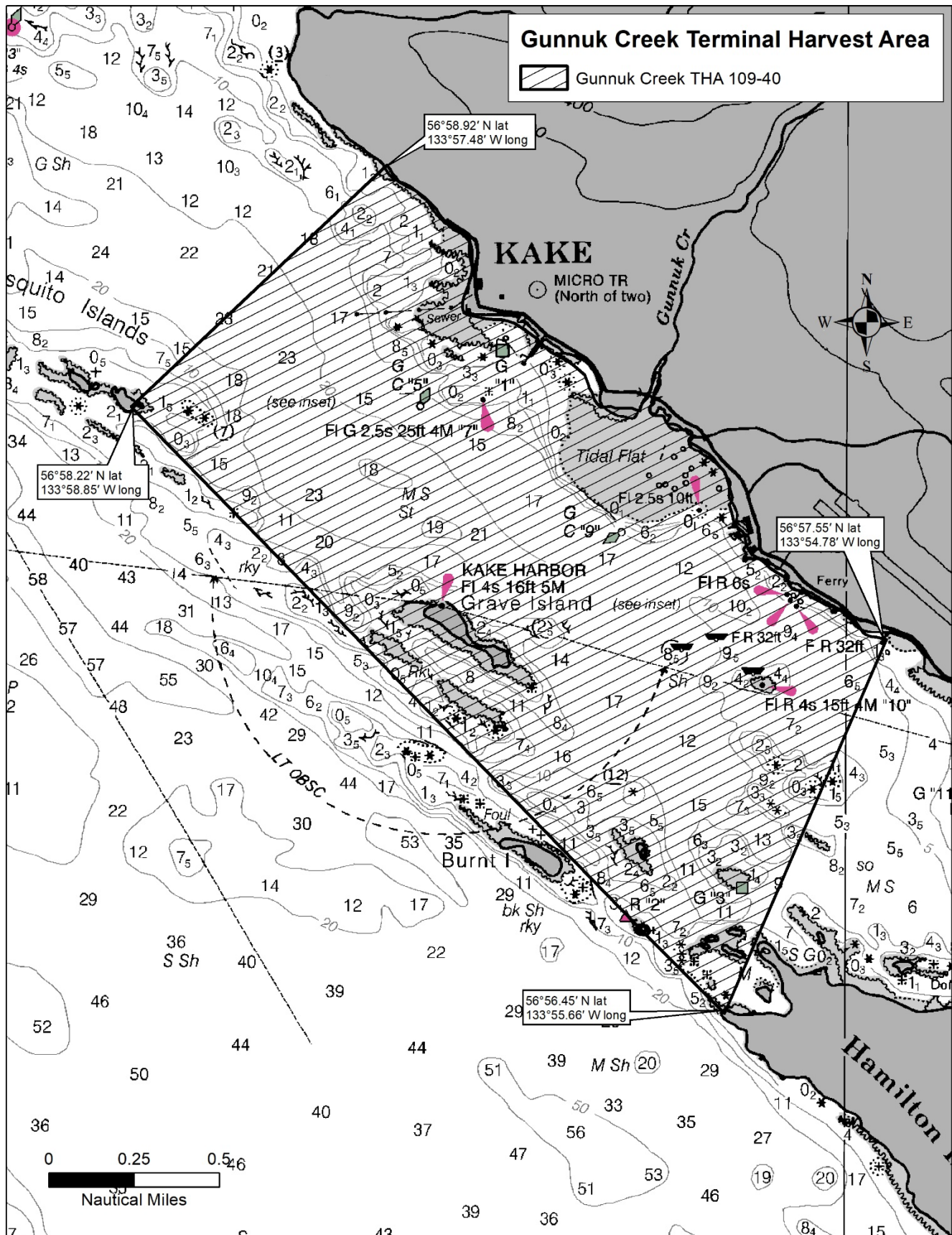


Figure 1.-Gunnuk Creek Terminal Harvest Area.