



Advisory Announcement

For Immediate Release: September 12, 2025

CONTACT: Adam Messmer
Region I Lead King/Tanner Crab Biologist
adam.messmer@alaska.gov
(907) 465-4853

SOUTHEAST ALASKA 2025 COMMERCIAL RED KING CRAB FISHERY

The Southeast Alaska (Registration Area A) commercial red king crab (RKC) and blue king crab (BKC) fishery will open for the 2025/2026 season. The 2025 stock assessment survey estimated 211,573 lb of legal male RKC available for harvest in a competitive fishery [5 AAC 34.113]. The *Southeast Alaska Red King Crab Management Plan* [5 AAC 34.113] directs the department to manage the RKC fishery in accordance with the Alaska Board of Fisheries' "Policy on King and Tanner Crab Resource Management".

The Southeast RKC regional biomass estimates for the 2025/2026 season are 2.65 million lb of legal male crab and 3.72 million lb of mature male crab with four (Juneau, Lynn Sisters, Gambier Bay, and Seymour Canal) of the seven survey areas having increases in either legal or mature biomass. The regional legal male biomass increased by 55% and mature male biomass increased by 42% from 2024. Regional biomass is estimated from the seven surveyed areas and extrapolated to the entire region.

Fishery Areas

The commercial fishery will open at **10:00 a.m.** on Saturday, November 1, 2025. To achieve the guideline harvest level (GHL), the fishery will be managed by targeting ten separate area-specific GHLs; three surveyed areas and seven non-surveyed areas (Figures 2 & 3):

- 1) Section 11-A (Juneau) Area
- 2) Gambier Bay Area
- 3) Seymour Canal Area
- 4) Eastern Frederick Sound Area
- 5) Icy/Outer Coast Area
- 6) Lower Chatham Strait Area
- 7) Lynn Canal Area
- 8) North Stephens Passage Area
- 9) Northern Chatham Strait Area
- 10) Southern Area

Survey areas are those where the department has conducted stock assessment surveys to evaluate stock condition and determine harvestable surplus. The area-specific GHLs are intended to limit harvest levels in surveyed areas to that which has been identified as surplus, while also allowing an opportunity to harvest in other areas (non-surveyed areas). Closures in Seymour Canal and the non-surveyed areas will be announced when it is projected that each area-specific GHL has been achieved.

Fishery Area Descriptions and GHLs

- 1) Section 11-A (Juneau) Area will have a **GHL of 20,446 lb and will be open for 24 hours only**. This area is defined as all waters of Gastineau Channel, Stephens Passage, and Lynn Canal north and west of a line from Bishop Point at 58°12.32' N lat, 134°10.14' W long to Point Arden Light at 58°09.55' N lat, 134°10.68' W long, and south of the latitude of Little Island Light at 58°32.41' N lat, and east of a line from Little Island Light at 58°32.41' N lat,

135°02.83' W long, to Point Retreat Light at 58°24.69' N lat, 134°57.31' W long, with the exception of those waters listed in 5 AAC 34.150 (see Closed Areas below).

- 2) Gambier Bay Area will have a **GHL of 9,948 lb and will be open for 24 hours only**. This area is defined as all waters of Statistical Area 110-23.
- 3) Seymour Canal Area will have a **GHL of 44,705 lb**. This area is defined as all waters of Seymour Canal north of 57°37.00' N lat (Section 11-D).
- 4) Eastern Frederick Sound Area will have a **GHL of 39,890 lb**. This area is defined as all waters of District 10 and Subdistrict 8-A, excluding the outlined survey areas.
- 5) Icy Strait/Outer Coast Area will have a **GHL of 14,938 lb**. This area is defined as all waters of Districts 13, 14, and 16, excluding Glacier Bay National Park and the outlined survey area.
- 6) Lower Chatham Strait Area will have a **GHL of 16,553 lb**. This area is defined as all waters of Districts 9 and 5.
- 7) Lynn Canal Area will have a **GHL of 13,925 lb**. This area is defined as all waters of District 15, excluding the outlined survey area.
- 8) North Stephens Passage Area will have a **GHL of 39,920 lb**. This area is defined as all waters of District 11 excluding the outlined survey area.
- 9) Northern Chatham Strait Area will have a **GHL of 6,133 lb**. This area is defined as all waters of District 12.
- 10) Southern Area will have a **GHL of 5,115 lb**. This area is defined as all waters of Districts 1, 2, 3, 4, 6, 7, and 8, excluding Sub-District 8-A.

Closed Areas

The commercial fishery will be closed in the following areas:

- 1) Within Section 11-A (Juneau) Area [5 AAC 34.150] – (a) the waters north of a line from Marmion Island Light to the easternmost tip of Point Salisbury at 58°12.50' N lat, 134°13.75' W long, and enclosed by a line from Outer Point on Douglas Island at 58°18.20' N lat, 134°41.30' W long, across Stephens Passage to the mouth of Bear Creek on Admiralty Island at 58°16.80' N lat, 134°46.50' W long, along the shoreline of Admiralty Island in a northerly direction to Symonds Point at 58°20.60' N lat, 134°50.20' W long, across Saginaw Channel to the southeasternmost tip of Shelter Island at 58°22.30' N lat, 134°48.60' W long, along the shoreline of Shelter Island to the southernmost tip of Halibut Cove at 58°27.70' N lat, 134°53.30' W long, across Favorite Channel to the southernmost entrance of Amalga Harbor at 58°29.30' N lat, 134°47.30' W long; and
(b) the waters of Barlow Cove south of the latitude of Barlow Point at 58°22.80' N lat, 134°53.70' W long.
- 2) Peril Strait – all waters of Peril Strait including Hoonah Sound, Ushk Bay, Rodman Bay, Saook Bay, Hanus Bay, Sitkoh Bay, and contiguous waters west of a line from Point Hayes to Point Thatcher and north of a line from Pogibshi Point due west to the Chichagof shoreline (Section 13-C).
- 3) Excursion Inlet Area – waters east of a line from a point at 58°22.57' N lat, 135°30.08' W long, south to a point at 58°19.28' N lat, 135°30.06' W long, and north of a line from a point at 58°19.28' N lat, 135°30.06' W long, to a point at 58°16.13' N lat, 135°20.61' W long, including Excursion Inlet.
- 4) Pybus Bay/Little Pybus/Round Rock Area – this area is defined as all waters of statistical area 110-22 and includes waters north of a line from 57°12.40' N lat, 134°09.47' W long, to a point in Frederick Sound at 57°12.61' N lat, 133°52.86' W long, and east of a line from a point in Frederick Sound at 57°12.61' N lat, 133°52.86' W long, to a point on Admiralty Island Coast at 57°18.40' N lat, 133°57.80' W long.

- 5) Lynn Sisters – all waters north of a line from a point at 58°27.00' N lat, 135°06.50' W long, due east to a point at 58°27.00' N lat, 135°03.00' W long, and west of a line from a point at 58°27.00' N lat, 135°03.00' W long, to Point Whidbey at 58°34.65' N lat, 135°08.69' W long, including St. James Bay.

Although waters of Glacier Bay proper and upper Dundas Bay (portion of 114-60) are not closed areas in state regulations, and are not closed due to stock health concerns, these areas were closed by federal law to commercial harvest of king crab. For more information on commercial fishing restrictions in Glacier Bay National Park, permit holders can contact the National Park Service at (907) 697-2230. Permit holders are also reminded to review boundaries of state waters closed to commercial harvest in 5 AAC 34.150 on page 17 of the 2025–2026 King and Tanner Crab Commercial Fishing Regulations booklet available at area offices.

Inseason Management and Reporting Requirements

The amount of harvestable surplus available in the Juneau and Gambier Bay Areas does not allow for inseason management to target the GHLs. These areas will open at **10:00 a.m., Saturday, November 1, 2025, and will close at 10:00 a.m., Sunday, November 2, 2025.** Seymour Canal and the seven non-surveyed areas will be managed inseason for their individual GHLs using mandatory call-in information. Logbooks and inseason reporting are mandatory for the RKC fishery [5 AAC 34.130 & 5 AAC 34.143]. For all areas, daily inseason reporting will be required for the entire season. **Prior to the start of the season, the first mandatory call-in is Friday, October 31, 2025.** Permit holders will be required to disclose which fishery area they plan to set gear at the start of the fishery.

Daily call-ins are required for all registered permit holders until all area GHLs are reached, or until a permit holder unregisters from the fishery. **Daily call-ins are due by 8:00 a.m. for the previous 24-hour's fishing activities (pot lifts, number of crab caught, and statistical area fished).** Alaska Wildlife Troopers (AWT) will be informed if call-in requirements are not followed. A dedicated phone line, (907) 772-5200, has been established for the reporting and multiple calls can be handled simultaneously. For permit holders who wish to text or e-mail their logbook data please contact Adam Messmer in Douglas (465-4853) to make arrangements.

Closure information for the non-surveyed areas will be announced via advisory announcement and in conjunction with U.S. Coast Guard broadcasts on the VHF marine radio, Channel 16. Additionally, closure announcements will be recorded on the department's call-in line, (907) 772-5200. **Permit holders should plan to listen for radio announcements, or monitor the department's call-in line, and expect notice as short as 8-hours for area closures.**

Logbooks should be sealed in one of the envelopes provided in logbook packets and attached to the fish ticket submitted to the processor upon delivery. The number of crab harvested, pounds, and number of pot lifts by statistical area must be recorded on fish tickets. Logbooks must also include average soak time. Each king crab permit holder shall indicate on the fish ticket at the time of landing any king crab harvested which are not purchased by the processor (personal use, deadloss, etc.), or which have been discarded at sea [5 AAC 34.075(a)]. Each buyer of king crab shall indicate on the fish ticket any king crab which was not purchased from a delivery [5 AAC 34.075(b)].

Additionally, the department has been tagging RKC in the surveyed areas of Seymour Canal and Gambier Bay (Figure 1). It is important to note that **not all tagged king crab are legal size and sublegal tagged crab are still illegal to retain.** The purpose of the study is to gather movement data over multiple years and growth increments after each molt. The department is requesting anyone who captures a tagged crab to indicate the capture location (latitude and longitude), tag number, and whether or not the crab was legal in the comments section on a logbook page included with the registration packets. There is no reward offered for these tags.

Registration and Buoy Tags

The registration deadline for the 2025/2026 commercial RKC fishery is Thursday, October 2, 2025. All permit holders registering in the 2025/2026 commercial RKC fishery after October 2, 2025, will be required to pay a \$45 late fee [A.S. 16.05.065]. Processors are reminded that registration for tenders is required.

Permit holders may register at Juneau, Sitka, Ketchikan, Petersburg, Craig, and Haines area offices. Logbooks are mandatory for all vessels participating in the commercial RKC fishery. Logbook packets, buoy tags, and other related materials are currently available in area offices. Logbook packets include instructions for filling out the logbooks, logbook

sheets, envelopes for their delivery, updated statistical area maps, and all advisory announcements available at the time the packet is obtained.

Buoy tags are mandatory for all commercial RKC gear and are available in any area office in Southeast Alaska for \$1.25 each; refer to 5 AAC 34.051(b) for buoy tag placement regulations. Replacement tags are available upon receipt of a completed tag replacement affidavit. All missing tag numbers must be provided on the affidavit form and signed by the permit holder and a crewmember before replacements can be issued.

Lost Pots

Reporting of lost pots, or pots left in a closed area in fishing condition should be directed to the AWT offices in Juneau or Ketchikan (contact numbers are listed below).

Retention of Parasitized Red King Crab

Red king crab that are infected with the barnacle parasite, *Briarosaccus callosus*, may be retained regardless of size or sex [5 AAC 34.112]. Either a scar or the externa of the parasite located under the abdominal flap indicates the presence of this parasite; the scar is a dark brown or black spot about ¼ inches in diameter on the soft tissue of the abdominal flap. The externa varies in size, is shaped like a hot dog, and is usually attached to the soft tissue of the abdominal flap. The parasite's externa must be removed before the crab is placed into the vessel holding tank.

Retention of Blue King Crab

Permit holders registered for the 2025/2026 RKC fishery will be allowed to retain BKC [5 AAC 34.110 (e)] from areas described as BKC fishing areas [5 AAC 34.108].

Other Regulations

A person or vessel that operates commercial, subsistence, personal use, or sport pots or ring nets during the 30 days immediately before the scheduled opening date of the commercial fishery may not participate in that king crab fishery [5 AAC 34.128(a)]. **This prohibition does not apply to the operation of commercial shrimp or Dungeness crab pots** [5 AAC 34.128(b)]. Permit holders are reminded to review gear storage requirements and other pertinent regulations in the 2025–2026 Statewide King and Tanner Crab Commercial Fishing Regulations booklet available at area offices.

Regulations can also be viewed online at:

https://www.adfg.alaska.gov/static/regulations/fishregulations/pdfs/commercial/cf_king_tanner_crab_2025_2026.pdf.

Permit holders are reminded to account for any groundfish taken for bait prior to or during the RKC fishery. Groundfish harvested for bait should be marked as disposition code 92, landed catch, on the crab fish ticket for the trip on which the bait was taken. Sablefish, halibut, lingcod, shortspine thornyhead, shortraker, rougheye, and yelloweye rockfish may not be retained for bait, except that the head, tail, fins, closely trimmed skeleton, and viscera of delivered or processed commercial sablefish, lingcod, thornyhead, shortraker, rougheye, and yelloweye rockfish may be use for bait [5 AAC 28.190]. For more information on harvesting groundfish under commercial regulations for bait in the RKC fishery contact fishery managers.

The Emergency Order corresponding with this announcement is EO 1C3025.

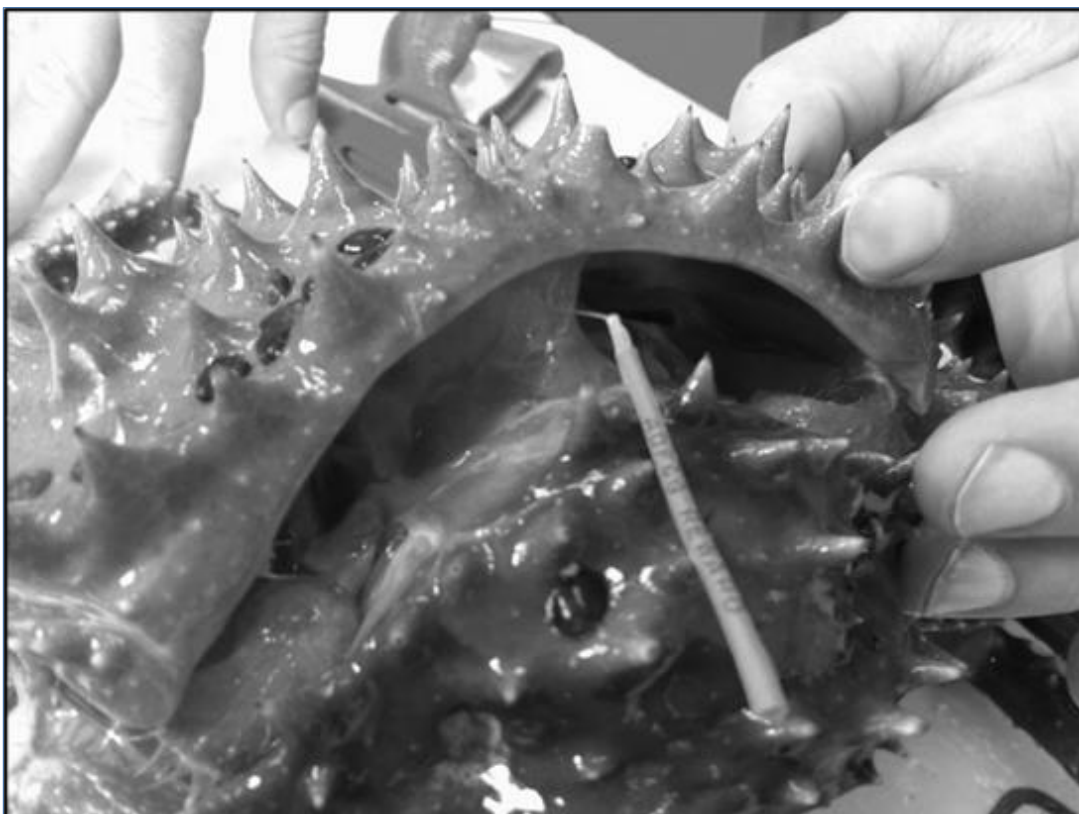


Figure 1. King crab with T-bar tag inserted into the isthmus muscle.

Advisory Announcement web site: <http://www.adfg.alaska.gov/index.cfm?adfg=cfnews.main>.

<i>Office</i>	<i>Ketchikan</i>	<i>Petersburg</i>	<i>Wrangell</i>	<i>Sitka</i>	<i>Juneau</i>	<i>Haines</i>	<i>Yakutat</i>
<i>ADF&G</i>	225-5195	772-3801		747-6688	465-4250	766-2830	784-3255
<i>AWT</i>	225-5111	772-3983	874-3215	747-3254	465-4000	766-2533	784-3220

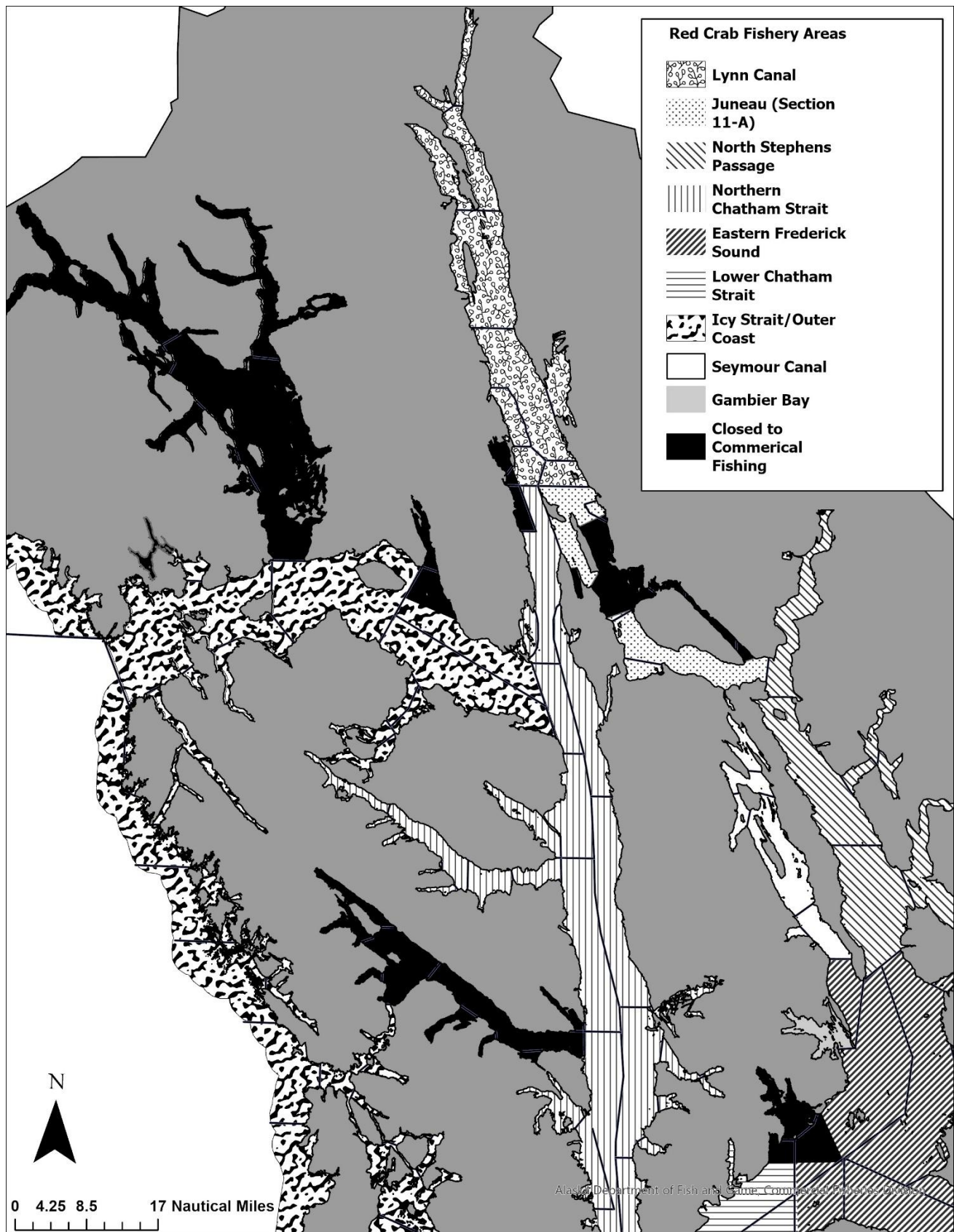


Figure 2. 2025/2026 RKC and BKC commercial fishery areas, northern portion; for reference purposes only.

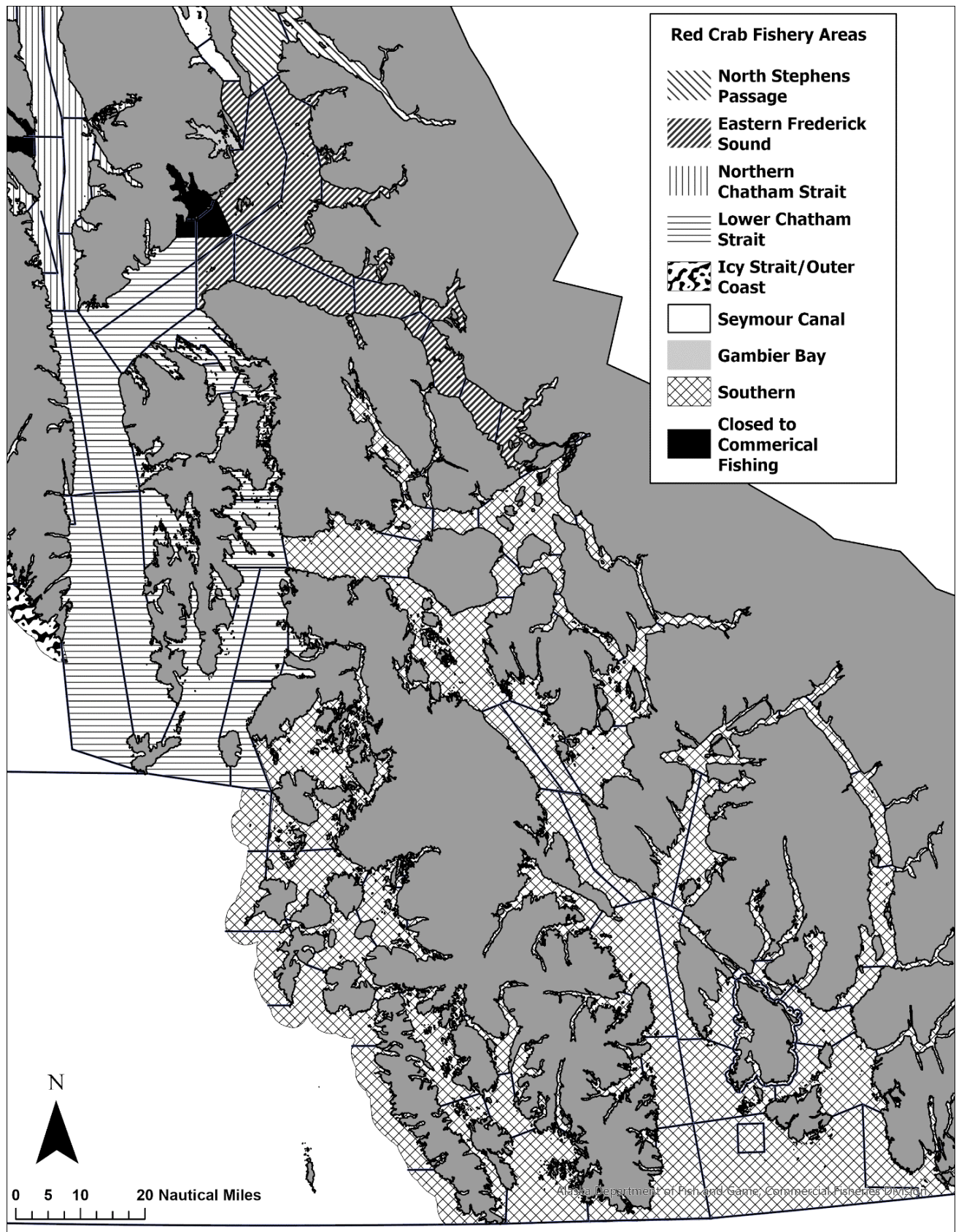


Figure 3. 2025/2026 RKC and BKC commercial fishery areas, southern portion; for reference purposes only.