



Advisory Announcement

For Immediate Release: August 16, 2023

CONTACT: Heather Scannell and Jeremy Botz
Finfish Area Management Biologists
(907) 424-3212

Prince William Sound Salmon Fishery Announcement #45

SEINE FISHERIES: PWSAC began its cost recovery sales program on July 25, and it is anticipated that cost recovery will be completed today.

Egg-take operations at VFDA began on August 4 and as of yesterday they are 34% complete towards their egg-take goal.

Preliminary harvest estimates for the fishing periods that occurred on August 15 are as follows:

- Eastern District: 96,400 pink and 71,600 chum salmon with 27 reported deliveries
- Northern District: 749,000 pink salmon with 71 reported deliveries
- Coghill District: 385,000 pink salmon with 29 reported deliveries
- Southwestern District: 2.46 million pink salmon with 161 reported deliveries

Recent preliminary otolith contribution estimates are as follows:

- Montague District on August 13: 36% wild, 27% AFK, 21% CCH, 10% WNH, and 5% SGH
- Southeastern District on August 9: 98% wild and 2% AFK
- Eastern District on August 9: 90% wild, 4% SGH, 4% CCH and 1% WNH

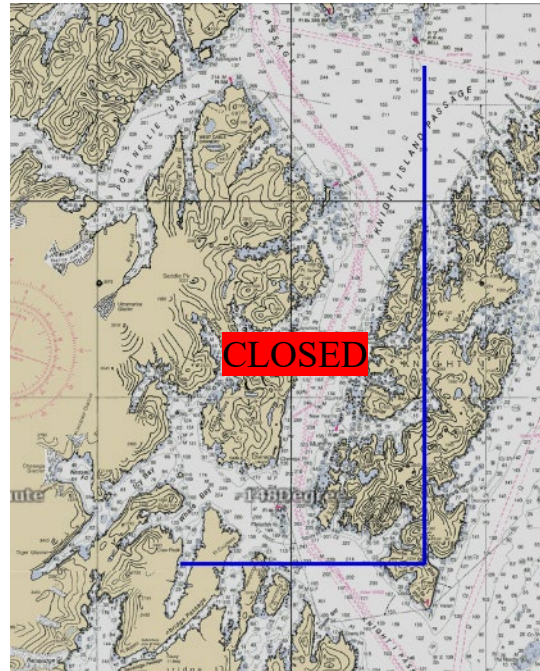
EASTERN DISTRICT: Waters of the Eastern District, south of a line from Potato Point to Entrance Point, will open to commercial purse seine fishing for a 12-hour period, from 7:00 am until 7:00 pm, on Thursday, August 17.

NORTHERN DISTRICT: Waters of the Northern District, excluding the Perry Island Subdistrict, will open to commercial purse seine fishing for a 12-hour period, from 7:00 am until 7:00 pm, on Thursday, August 17. Regulatory and anadromous stream closures in the Cannery Creek Subdistrict and in Jonah and Siwash Bays will not be in effect for this fishing period.

COGHILL DISTRICT: Waters of the Coghill District, excluding the Esther Subdistrict and WNH THA and SHA, will open to commercial purse seine and drift gillnet fishing for a 12-hour period, from 7:00 am until 7:00 pm, on Thursday, August 17.

NORTHWESTERN DISTRICT: Waters of the Northwestern District will open to commercial purse seine fishing for a 12-hour period, from 7:00 am until 7:00 pm, on Thursday, August 17.

SOUTHWESTERN DISTRICT: Waters of the Southwestern District, south of the latitude of 60° 11.50' N and east of Point Helen (147° 46.27' W.), excluding waters of the AFK THA and SHA, will open to commercial purse seine fishing for a 12-hour period, from 7:00 am until 7:00 pm, on Thursday, August 17. Anadromous stream closures within the Point Elrington Subdistrict will not be in effect during this fishing period.



MONTAGUE DISTRICT: Waters of the Montague District will open to commercial purse seine fishing for a 12-hour period, from 7:00 am until 7:00 pm, on Thursday, August 17.

SOUTHEASTERN DISTRICT: Waters of the Southeastern District will open to commercial purse seine fishing for a 12-hour period, from 7:00 am until 7:00 pm, on Thursday, August 17.

GILLNET FISHERIES

COPPER RIVER DISTRICT: The Copper River District will open at 7:00 am on Monday, August 21 for a 24-hour commercial drift gillnet fishing period. The standard management strategy for coho salmon is one or two 24-hour periods per week depending on escapement and harvest levels.

The grass bank marker line is defined in 5 AAC 24.350(1)(A) with the exception of this year’s extension of the closure line across Little Softuk (**see bold font below**). This closure line is defined with the following points:

<i>Point</i>	<i>Latitude</i>	<i>Longitude</i>
Point Whitshed South	60° 26.49’ N.	145° 52.86’ W.
Alaganik Slough North	60° 24.65’ N.	145° 36.70’ W.

Pete Dahl East	60° 20.44' N.	145° 29.14' W.
West Kokenhenik	60° 14.88' N.	145° 10.01' W.
East "East Side"	60° 14.83' N.	145° 03.36' W.
Coffee Creek East	60° 14.19' N.	144° 58.01' W.
Charlie Mohr North	60° 15.15' N.	144° 56.43' W.
Martin River North	60° 15.29' N.	144° 52.52' W.
Strawberry Reef	60° 13.93' N.	144° 50.66' W.
Little Softuk	60° 13.16' N.	144° 41.38' W.

Waters north of this line, within sloughs, and in Boswell Bay within the bay (5 AAC 24.350 (1)(A)) are closed to commercial and subsistence salmon fishing during all periods.

For the week ending August 12, the actual Copper River Delta survey count was 29,025 sockeye salmon versus an anticipated range 26,465 – 62,553. Observational conditions during this survey were fair. Preliminary harvest estimates from the 36-hour period that started on Thursday, August 10 were 66 sockeye, 36 coho, and 12 pink salmon with 3 deliveries reported. Preliminary harvest estimates from the 24-hour period that started on Monday, August 14 were 280 sockeye and 1,220 coho salmon with 13 deliveries reported. The cumulative Copper River District harvest to date is 5,630 coho and 854,000 sockeye salmon.

BERING RIVER DISTRICT: The Bering River District will open at 7:00 am on Monday, August 21 for a 24-hour commercial drift gillnet fishing period. The standard management strategy for coho salmon in the Bering River District is to fish concurrent fishing time with the Copper River District. For the week ending August 12, the actual Bering River District survey count was 1,525 sockeye salmon versus an anticipated range 4,301 – 9,462. Observational conditions during this survey were poor.

ESHAMY DISTRICT: The Eshamy District will open to commercial gillnet harvest for a 24-hour period starting at 8:00 a.m. on Monday, August 21. The AGZ will open to DRIFT GILLNET permit holders only during this fishing period. The Eshamy River weir has passed 6,820 sockeye salmon through 8/15 with a cumulative target of 6,930–14,928 fish for the date. Preliminary harvest estimates from the 24-hour period that started on Monday, August 14 were 760 sockeye, 13,200 pink, and 220 chum salmon with 33 deliveries reported.

The next scheduled seine fisheries announcement is anticipated to be at 2:00 pm Friday, August 18.
The next scheduled gillnet fisheries announcement is anticipated to be at 2:00 pm Wednesday, August 23.

Announcement recordings are available for gillnet fisheries at 907-424-7535 and seine fisheries at 907-424-7345. In addition, announcement recordings are available in Anchorage at 907-267-2843.