



Advisory Announcement

For Immediate Release: July 29, 2023

CONTACT: Heather Scannell and Jeremy Botz
Finfish Area Management Biologists
(907) 424-3212

Prince William Sound Salmon Fishery Announcement #35

SEINE FISHERIES: PWSAC cost recovery began on July 25 and as of July 28, they are 6% complete. Cost recovery effort will be dependent on build-up and strength of entry into SHAs. To facilitate cost recovery efforts, and provide opportunity on wild stocks, time and area for future fishing opportunities will be based upon wild stock escapement, harvest contribution estimates and harvest/effort data.

VFDA reports multiple schools of fish around Port Valdez but entry to the hatchery remains behind anticipated levels. Fishing opportunity on SGH pink salmon will be dependent on broodstock acquisition and run entry into Port Valdez.

Aerial surveys of all purse seine districts are ongoing and stream escapements are within anticipated ranges for this time frame.

Recent preliminary contribution estimates are as follows:

- Southwestern District on July 24: 46% wild, 36% AFK, 8% WNH, 6% CCH%, and 4% SGH
- Coghill District on July 24: 96% wild, 2% WNH, 1% CCH, and 1% SGH
- Coghill District on July 25: 100% wild
- Northern District on July 24: 53% SGH, 34% wild, 11% CCH, and 2% WNH

EASTERN DISTRICT: Waters of the Eastern District, south of a line from Entrance Point to Potato Point, will open to commercial purse seine fishing for a 16-hour period, from 6:00 am until 10:00 pm, on Sunday, July 30. Preliminary harvest estimates from the fishing period that occurred on July 27 were 891,000 pink and 57,000 chum salmon with 122 reported deliveries.

Waters inside the following Eastern District Salmon Harvest Task Force (SHTF) markers will be closed to commercial fishing during this period to ensure escapement:

- (1) Galena Bay: east of a line from a shore marker at approximately 60°56.87' N. lat., 146°39.87' W. long. to a shore marker at approximately 60°56.55' N. lat., 146°39.65' W. long.;
- (2) Port Fidalgo Subdistrict: waters east of 146°24.12' W. long.

NORTHERN DISTRICT: Waters of the Northern District, excluding the Cannery Creek Hatchery and Perry Island Subdistricts, will open to commercial purse seine fishing for a 16-hour period, from 6:00 am until 10:00 pm, on Sunday, July 30. Preliminary harvest estimates from the fishing period that occurred on July 27 were 254,000 pink salmon with 38 reported deliveries.

COGHILL DISTRICT: Waters of the Coghill District, excluding the WNH SHA and THA and the Esther Subdistrict, will open to purse seine and drift gillnet harvest for a 16-hour period, from 6:00 am until 10:00 pm, on Sunday, July 30. Regulatory closed waters pertaining to the Coghill River, as specified in 5 AAC 24.350(6)(B), will not be in effect until further notice. Commercial fishing will not be permitted within the bed or channel of the Coghill River at any stage of the tide. Preliminary harvest estimates from the fishing period that occurred on July 27 were 113,000 pink salmon with 26 reported deliveries.

Waters inside the following Coghill District Salmon Harvest Task Force (SHTF) markers will be closed for this period to ensure escapement:

- (1) **Bettles Bay:** west of a line from a shore marker at approximately 60°56.16' N. lat., 148°14.76' W. long. to a shore marker at approximately 60°54.97' N. lat., 148°16.09' W. long.;
- (2) **Hummer Bay:** west of a line from a shore marker at approximately 60°53.56' N. lat., 148°16.62' W. long. to a shore marker at approximately 60°51.76' N. lat., 148°17.52' W. long.;
- (3) **Pigot Bay:** west of a line from a shore marker at approximately 60°49.96' N. lat., 148°19.07' W. long. to a shore marker at approximately 60°49.08' N. lat., 148°20.12' W. long.;

NORTHWESTERN DISTRICT: Waters of the Northwestern District will open to commercial purse seine fishing for a 16-hour period, from 6:00 am until 10:00 pm, on Sunday, July 30. Harvest from the period that occurred on July 27 is confidential.

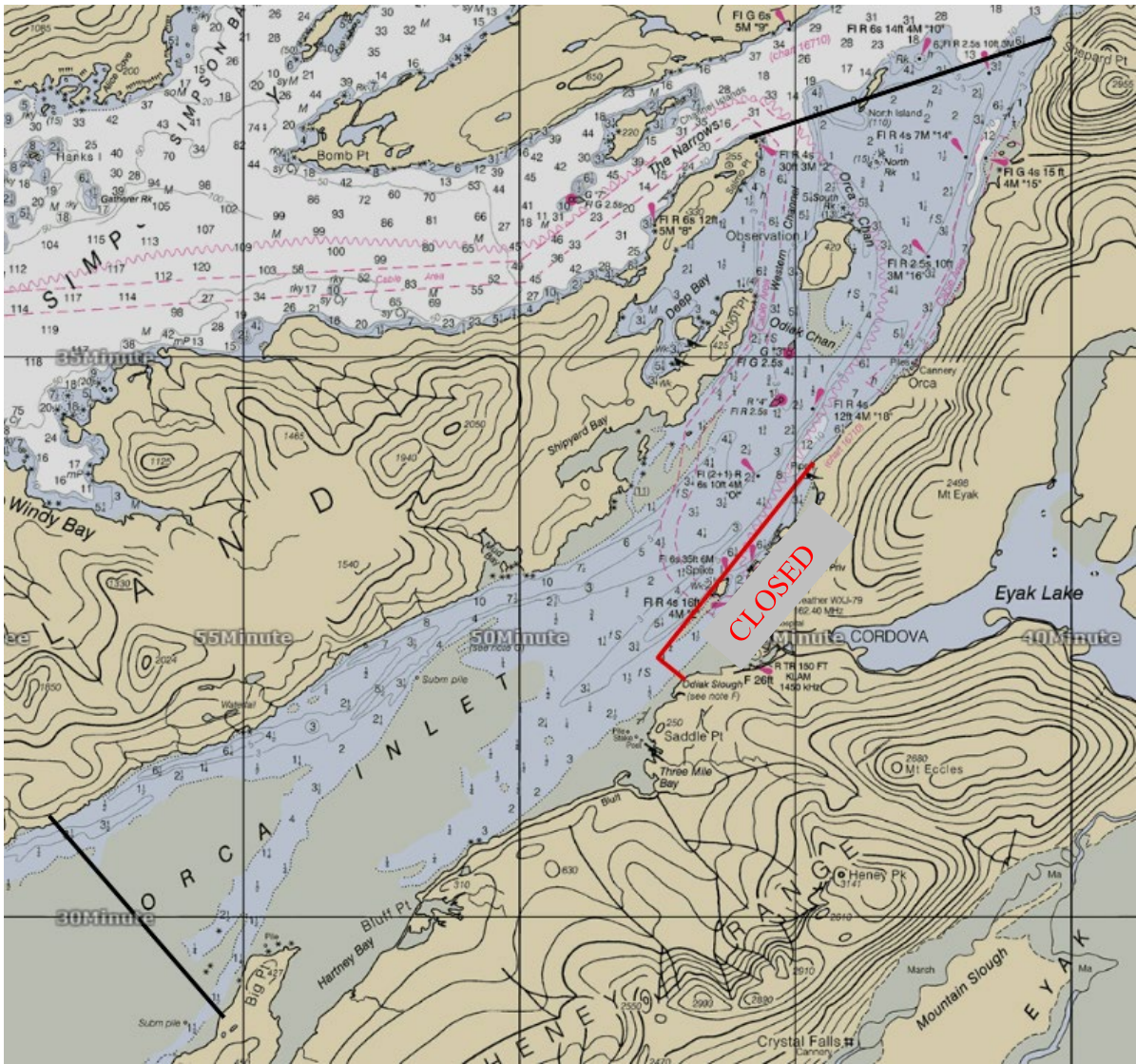
Waters inside the following Northwestern District Salmon Harvest Task Force (SHTF) markers will be closed for this period to ensure escapement:

- (1) **Cochrane Bay:** south of a line from a shore marker at approximately 60°44.91' N. lat., 148°17.12' W. long. to a shore marker at approximately 60°46.01' N. lat., 148°21.77' W. long.;
- (2) **Culross Pass:** within the passage south of a line from a shore marker at approximately 60°45.47' N. lat., 148°12.63' W. long. to a shore marker at approximately 60°45.82' N. lat., 148°13.57' W. long. and north of a line from a shore marker at approximately 60°37.48' N. lat., 148°10.12' W. long. to a shore marker at approximately 60°37.16' N. lat., 148°11.42' W. long.;
- (3) **Port Nellie Juan:** south and west of a line from a shore marker at approximately 60°30.36' N. lat., 148°15.03' W. long. to a shore marker at approximately 60°32.36' N. lat., 148°19.42' W. long.;

MONTAGUE DISTRICT: Waters of the Montague District, excluding the Port Chalmers Subdistrict, will open to commercial purse seine fishing for a 16-hour period, from 6:00 am until 10:00 pm, on Sunday, July 30. Harvest from the period that occurred on July 27 is confidential.

SOUTHEASTERN DISTRICT: Waters of the Southeastern District will open to commercial purse seine fishing for a 16-hour period, from 6:00 am until 10:00 pm, on Sunday, July 30. Regulatory closed waters within Orca Inlet northeast of a line from 60°29.10'N, 145°55.35'W., to 60°30.91'N., 145°58.52'W., will be suspended for this period but anadromous stream closures will remain in effect. All waters within 500 yards of the terminus of all salmon streams within the area defined above will be closed for this fishing period. Additionally, all waters in front of Cordova, defined by a point on shore at 60°32.12'N., 145°47.00'W., extending out to 60°32.32'N.,

145°47.49'W., and then to another point on shore at 60°34.06'N., 145°44.67'W., will be closed for this fishing period. Harvest from the period that occurred on July 27 is confidential.



GILLNET FISHERIES

COPPER RIVER DISTRICT: The Copper River District will open at 7:00 am on Monday, July 31 for a 48-hour commercial drift gillnet fishing period.

The grass bank marker line is defined in 5 AAC 24.350(1)(A) with the exception of this year’s extension of the closure line across Little Softuk (**see bold font below**). This closure line is defined with the following points:

<i>Point</i>	<i>Latitude</i>	<i>Longitude</i>
Point Whitshed South	60° 26.49’ N.	145° 52.86’ W.

Alaganik Slough North	60° 24.65' N.	145° 36.70' W.
Pete Dahl East	60° 20.44' N.	145° 29.14' W.
West Kokenhenik	60° 14.88' N.	145° 10.01' W.
East "East Side"	60° 14.83' N.	145° 03.36' W.
Coffee Creek East	60° 14.19' N.	144° 58.01' W.
Charlie Mohr North	60° 15.15' N.	144° 56.43' W.
Martin River North	60° 15.29' N.	144° 52.52' W.
Strawberry Reef	60° 13.93' N.	144° 50.66' W.
Little Softuk	60° 13.16' N.	144° 41.38' W.

Waters north of this line, within sloughs, and in Boswell Bay within the bay (5 AAC 24.350 (1)(A)) are closed to commercial and subsistence salmon fishing during all periods.

Cumulative sonar count through 7/28 is 987,450 fish whereas 581,174 fish are projected by this date. For the week ending July 15, the actual Copper River Delta survey count was 62,395 sockeye salmon versus an anticipated range 31,424 – 74,276. Preliminary harvest estimates from the 48-hour period that started on Monday, July 24 were 11,500 sockeye salmon with 93 deliveries reported. The cumulative Copper River District harvest to date is 10,400 Chinook and 840,000 sockeye salmon.

BERING RIVER DISTRICT: The Bering River District will open to commercial salmon fishing, west of a longitude line at 144° 33.60' W., for a 48-hour period starting at 7:00 a.m. on Monday, July 31.

ESHAMY DISTRICT: The Eshamy District will open to commercial gillnet harvest for a 24-hour period starting at 8:00 am on Monday, July 31. The AGZ will open to DRIFT GILLNET permit holders only during this fishing period.

The next scheduled seine fisheries announcement is anticipated to be at 2:00 pm Tuesday, August 1.

The next scheduled gillnet fisheries announcement is anticipated to be at 2:00 pm Wednesday, August 2.

Announcement recordings are available for gillnet fisheries at 907-424-7535 and seine fisheries at 907-424-7345. In addition, announcement recordings are available in Anchorage at 907-267-2843.