



## Advisory Announcement

*For Immediate Release: July 25, 2023*

**CONTACT: Heather Scannell and Jeremy Botz**  
**Finfish Area Management Biologists**  
**(907) 424-3212**

### Prince William Sound Salmon Fishery Announcement #33

**SEINE FISHERIES:** PWSAC has recommended closures around their pink salmon facilities to begin building fish for cost recovery. Cost recovery efforts at WNH are scheduled to begin today. At this time, cost recovery effort will be dependent on build-up and strength of entry into SHAs. To facilitate cost recovery efforts, and provide opportunity on wild stocks, time and area for future fishing opportunities will be based upon wild stock escapement, harvest contribution estimates and harvest/effort data.

VFDA estimates approximately 200,000 pink salmon are in the head of Port Valdez and they will continue to build and secure broodstock. Fish sampled by VFDA from Jack Bay on July 24 yielded a female ratio of 59% with an average weight of 2.4 lbs. Fishing opportunity on SGH pink salmon will be dependent on broodstock acquisition and run entry into Port Valdez.

Aerial surveys of all purse seine districts are ongoing and stream escapements are within anticipated ranges for this time frame.

Recent preliminary contribution estimates are as follows:

- Eastern District on July 22: 84% SGH, 2% CCH and 13% wild.
- Northern District on July 22: 89% SGH, 1% CCH, 1% WNH, and 9% SGH.
- Southwestern District on July 22: 33% wild, 28% SGH, 18% AFK, 11% CCH%, and 10% WNH.

**5 AAC 24.350 Closed Waters.** Unless otherwise specified, all regulatory closed waters and anadromous stream closures are in effect.

**EASTERN DISTRICT:** Time and area for the Eastern District period occurring on Thursday, July 27, will be announced tomorrow, July 26. Preliminary harvest estimates from the fishing period that occurred on July 24 were 978,000 pink and 17,700 chum salmon with 125 reported deliveries.

**NORTHERN DISTRICT:** Waters of the Northern District, excluding the Cannery Creek Hatchery and Perry Island Subdistricts, will open to commercial purse seine fishing for a 14-hour period, from 6:00 am until 8:00 pm, on Thursday, July 27. Preliminary harvest estimates from the fishing period that occurred on July 24 were 133,000 pink salmon with 13 reported deliveries.

**Waters inside the following Northern District Salmon Harvest Task Force (SHTF) markers will be closed to commercial fishing during this period to ensure escapement:**

- (1) Eaglek Bay: north of a line from a shore marker at approximately 60°50.66' N. lat., 147°40.27' W. long. to a shore marker at approximately 60°50.56' N. lat., 147°44.57' W. long.;
- (2) Wells Bay: north of a line from a shore marker at approximately 60°56.75' N. lat., 147°29.92' W. long. to a shore marker at approximately 60°57.08' N. lat., 147°28.14' W. long.;
- (3) Cedar Bay: north of a line from a shore marker at approximately 60°56.46' N. lat., 147°27.03' W. long. to a shore marker at approximately 60°56.03' N. lat., 147°26.39' W. long.;
- (4) Long Bay: north of a line from 60°57.63' N. lat., 146°13.50' W. long. to 60°57.01' N. lat., 146°15.47' W.

**COGHILL DISTRICT:** Waters of the Coghill District, excluding the WNH SHA and THA and the Esther Subdistrict, will open to purse seine and drift gillnet harvest for a 14-hour period starting at 6:00 am on Thursday, July 27. Regulatory closed waters pertaining to the Coghill River, as specified in 5 AAC 24.350(6)(B), will not be in effect until further notice. Commercial fishing will not be permitted within the bed or channel of the Coghill River at any stage of the tide.

**Waters inside the following Coghill District Salmon Harvest Task Force (SHTF) markers will be closed for this period to ensure escapement:**

- (1) Bettles Bay: west of a line from a shore marker at approximately 60°56.16' N. lat., 148°14.76' W. long. to a shore marker at approximately 60°54.97' N. lat., 148°16.09' W. long.;
- (2) Hummer Bay: west of a line from a shore marker at approximately 60°53.56' N. lat., 148°16.62' W. long. to a shore marker at approximately 60°51.76' N. lat., 148°17.52' W. long.;
- (3) Pigot Bay: west of a line from a shore marker at approximately 60°49.96' N. lat., 148°19.07' W. long. to a shore marker at approximately 60°49.08' N. lat., 148°20.12' W. long.;

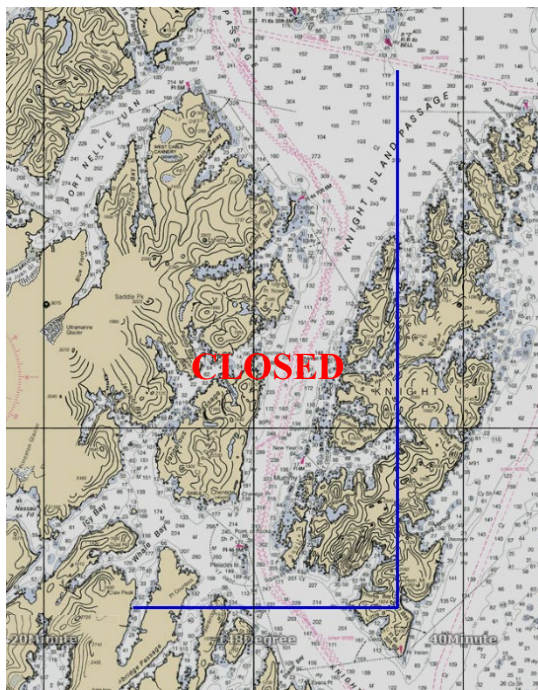
The Coghill River weir has passed 61,599 sockeye salmon through 7/24 with a cumulative target of 19,411–72,915 fish for the date. Coghill weir is scheduled to cease operations later this week. Preliminary harvest estimates from the fishing period that occurred on July 24 were 39,800 pink, 2,450 chum, and 1,390 sockeye salmon with 14 reported deliveries.

**NORTHWESTERN DISTRICT:** Waters of the Northwestern District will open to commercial purse seine fishing for a 14-hour period, from 6:00 am until 8:00 pm, on Thursday, July 27.

**Waters inside the following Northwestern District Salmon Harvest Task Force (SHTF) markers will be closed for this period to ensure escapement:**

- (1) Cochrane Bay: south of a line from a shore marker at approximately 60°44.91' N. lat., 148°17.12' W. long. to a shore marker at approximately 60°46.01' N. lat., 148°21.77' W. long.;
- (2) Culross Pass: within the passage south of a line from a shore marker at approximately 60°45.47' N. lat., 148°12.63' W. long. to a shore marker at approximately 60°45.82' N. lat., 148°13.57' W. long. and north of a line from a shore marker at approximately 60°37.48' N. lat., 148°10.12' W. long. to a shore marker at approximately 60°37.16' N. lat., 148°11.42' W. long.;
- (3) Port Nellie Juan: south and west of a line from a shore marker at approximately 60°30.36' N. lat., 148°15.03' W. long. to a shore marker at approximately 60°32.36' N. lat., 148°19.42' W. long.

**SOUTHWESTERN DISTRICT:** Waters of the Southwestern District, south of the latitude of 60° 11.50' N and east of Point Helen (147° 46.27' W.) and **excluding waters of the Point Elrington and San Juan Subdistricts and waters of the AFK THA and SHA**, will open to commercial purse seine fishing for a 14-hour period, from 6:00 am until 8:00 pm, on Thursday, July 27. Preliminary harvest estimates from the fishing period that occurred on July 24 were 102,000 pink salmon with 11 reported deliveries.



**MONTAGUE DISTRICT:** Waters of the Montague District, excluding the Port Chalmers Subdistrict, will open to commercial purse seine fishing for a 14-hour period, from 6:00 am until 8:00 pm, on Thursday, July 27. **Regulatory closed waters and anadromous stream closures in the Montague District, excluding Port Chalmers Subdistrict, are in effect until further notice.**

**SOUTHEASTERN DISTRICT:** Waters of the Southeastern District will open to commercial purse seine fishing for a 14-hour period, from 6:00 am until 8:00 pm, on Thursday, July 27.

The next scheduled seine fisheries announcement is anticipated to be at 2:00 pm Wednesday, July 26.  
The next scheduled gillnet fisheries announcement is anticipated to be at 2:00 pm Wednesday, July 26.

Announcement recordings are available for gillnet fisheries at 907-424-7535 and seine fisheries at 907-424-7345. In addition, announcement recordings are available in Anchorage at 907-267-2843.